



CONTACT INFORMATION

Mining Records Curator
Arizona Geological Survey
1520 West Adams St.
Phoenix, AZ 85007
602-771-1601
<http://www.azgs.az.gov>
inquiries@azgs.az.gov

The following file is part of the

Arizona Department of Mines and Mineral Resources Mining Collection

ACCESS STATEMENT

These digitized collections are accessible for purposes of education and research. We have indicated what we know about copyright and rights of privacy, publicity, or trademark. Due to the nature of archival collections, we are not always able to identify this information. We are eager to hear from any rights owners, so that we may obtain accurate information. Upon request, we will remove material from public view while we address a rights issue.

CONSTRAINTS STATEMENT

The Arizona Geological Survey does not claim to control all rights for all materials in its collection. These rights include, but are not limited to: copyright, privacy rights, and cultural protection rights. The User hereby assumes all responsibility for obtaining any rights to use the material in excess of "fair use."

The Survey makes no intellectual property claims to the products created by individual authors in the manuscript collections, except when the author deeded those rights to the Survey or when those authors were employed by the State of Arizona and created intellectual products as a function of their official duties. The Survey does maintain property rights to the physical and digital representations of the works.

QUALITY STATEMENT

The Arizona Geological Survey is not responsible for the accuracy of the records, information, or opinions that may be contained in the files. The Survey collects, catalogs, and archives data on mineral properties regardless of its views of the veracity or accuracy of those data.

PRINTED: 01/27/2004

ARIZONA DEPARTMENT OF MINES AND MINERAL RESOURCES AZMILS DATA

PRIMARY NAME: HARDY

ALTERNATE NAMES:

KEYNOTE
MILLER

MOHAVE COUNTY MILS NUMBER: 16A

LOCATION: TOWNSHIP 19 N RANGE 20 W SECTION 5 QUARTER NE
LATITUDE: N 35DEG 03MIN 55SEC LONGITUDE: W 114DEG 25MIN 31SEC
TOPO MAP NAME: OATMAN - 7.5 MIN

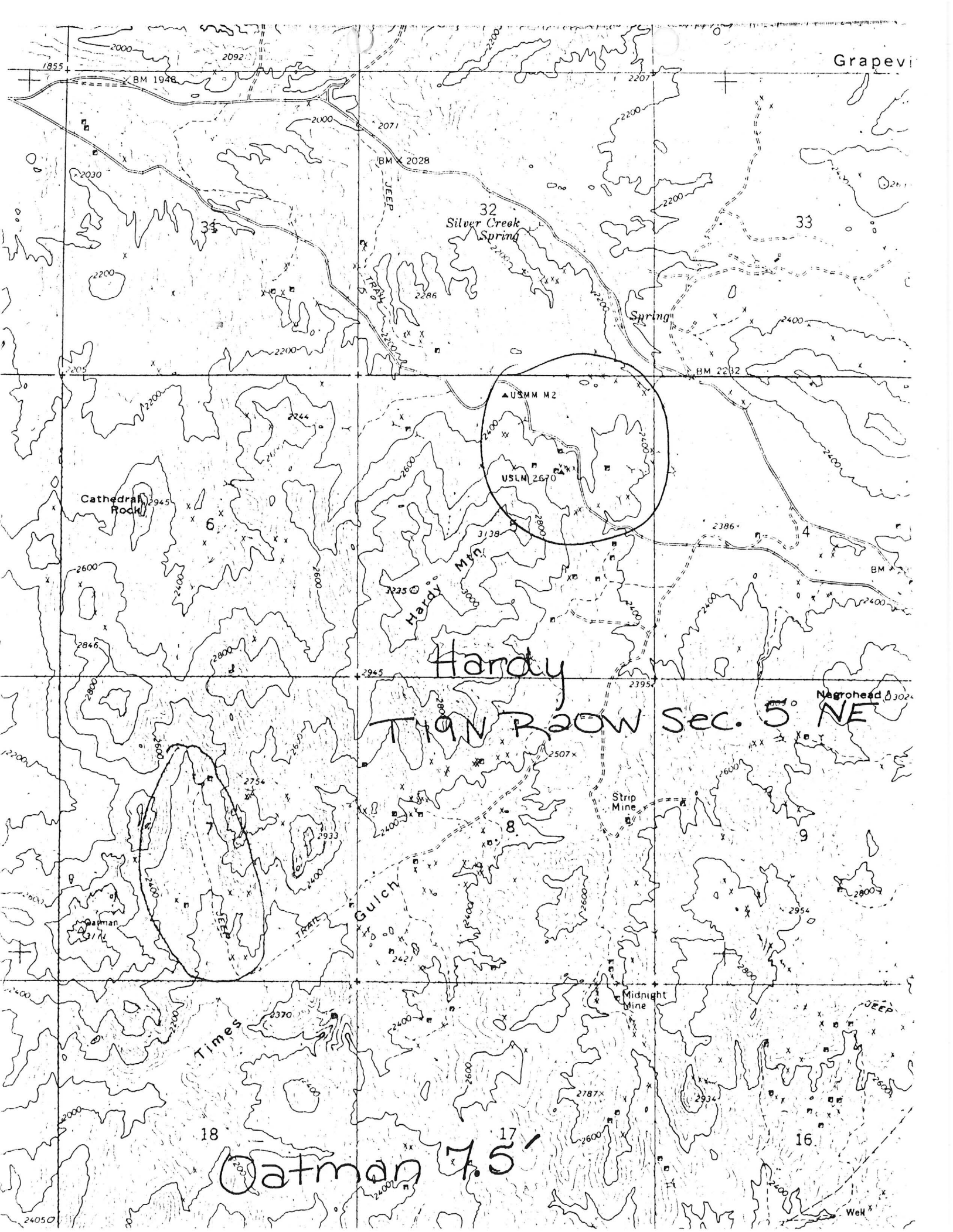
CURRENT STATUS: PAST PRODUCER

COMMODITY:

GOLD LODE
SILVER
FLUORINE FLUORSPAR

BIBLIOGRAPHY:

ADMMR HARDY MINE FILE
ADMMR MOHAVE CUSTOM MILL PROJECT
WILSON, E.D. "AZ LODE GOLD MINES" AZBM BULL
137, P. 98; 1967
ELSING, M.J. "AZ METAL PRODUCTION" AZBM BULL
140, P. 96; 1936
RANSOME, F.L. "GEOL. OF OATMAN GOLD DIST, AZ"
USGS BULL 743, P. 4, 8 (MAP)
SCHRADER, F.C. "MIN. DPSTS OF CRBT RNGE, BLCK
MTN, GRND WSH CLF, AZ" USGS BUL 397, P 176-8
SCHRADER, F.C. "MIN. DPSTS OF CRBT RNGE, BLCK
MTNS, GRND WSH CLFS, AZ" USGS BULL 340, P 78
GARDNER, E.D. "GOLD MNG & MLLNG IN BLCK MTNS,
WEST MOH. CTY, AZ" USBM IC 6901, P. 8, 40
ADMMR INDUSTRIAL MINERALS RPT, NO. 2, P. 41
ADDITIONAL WORKINGS SEC. 4-T19N-R20W
ADMMR AZ. FLUORSPAR RPT, NO. 3, P. 30; 1971
ADMMR MAPS (UPSTAIRS IN AZBM FILE BOXES - 1
CLAIM MAP W/ UNDERGROUND WORKINGS)



Grapevi

32
Silver Creek
Spring

33

Spring

▲ USMM M2

USLM 2670

Cathedral
Rock

Hardy
Mtn.

Hardy

T19N R20W Sec. 5 NE

Negrohead

Strip
Mine

Midnight
Mine

Times
Gulch

18

Oatman 7.5'

16

17

DEEP

Well

DEPARTMENT OF MINERAL RESOURCES

STATE OF ARIZONA

FIELD ENGINEERS REPORT

Mine **Hardy Mine**

Date **December 19, 1957**

District **San Francisco, Mohave Co.**

Engineer **Lewis A. Smith**

Subject: **Visit to Property**

Location: **Sec. 5, North Part, T 19 R, R 20 E, 3½ miles NW of Oatman**

Operators: **W. H. Hittson and James McCarty, Oatman, Arizona**

Work: **Shaft to 300 feet and 1200 feet of drifts, several lesser shafts and winzes were driven as well as several hundred feet of tunnels.**

Geology: **The deposit consists of a vein which strikes N 75°W to nearly EW, and dips about 75 degrees to the north. Cross fractures, closely spaced in places, have caused locally rich, but relatively small off-shoots of ore in the footwall. The vein varies in width from 2 - 30 feet and can be traced for more than a mile. However, the main concentration of ore material seems to have occurred where a nearly N-S shear zone is intercepted by the vein fracture. On the footwall a 35 foot zone of mineralization extends into the wall rock. This area contains prominent fluorite, calcite, adularia and intimate silicified blebs or veinlets of stage 3 quartz. The average grade of this is about \$3.50 according to Mr. McCarty. The vein fracture has a wide gouge zone (3-5') in the center of which is a quartz vein of variable thickness (2" to 12"), which may probably be classed as stage 5 quartz, and which contains a very good grade of ore (10 oz or better). The wall rock is Times microgranitic granite-porphyry which in places to the south grades into a hornblende monzonite porphyry. A wide north-south trending trench about 500' south of the main vein cut across the shear zone, yielded a general average assay of \$3.25 in gold. This closely admixed with iron oxides, and the rock is stained yellow to brown. This sheared zone varies from 75 to 100 feet in width and the individual shears are closely spaced. The ore varies within the main vein, from a few cents up to 1.5 oz. of gold and 1-2 oz. of silver.**

Along the main vein the ore shoots are localized by the intersecting transverse shears which appear to be pre-mineral in age.