



## **CONTACT INFORMATION**

Mining Records Curator  
Arizona Geological Survey  
1520 West Adams St.  
Phoenix, AZ 85007  
602-771-1601  
<http://www.azgs.az.gov>  
[inquiries@azgs.az.gov](mailto:inquiries@azgs.az.gov)

The following file is part of the

Arizona Department of Mines and Mineral Resources Mining Collection

## **ACCESS STATEMENT**

These digitized collections are accessible for purposes of education and research. We have indicated what we know about copyright and rights of privacy, publicity, or trademark. Due to the nature of archival collections, we are not always able to identify this information. We are eager to hear from any rights owners, so that we may obtain accurate information. Upon request, we will remove material from public view while we address a rights issue.

## **CONSTRAINTS STATEMENT**

The Arizona Geological Survey does not claim to control all rights for all materials in its collection. These rights include, but are not limited to: copyright, privacy rights, and cultural protection rights. The User hereby assumes all responsibility for obtaining any rights to use the material in excess of "fair use."

The Survey makes no intellectual property claims to the products created by individual authors in the manuscript collections, except when the author deeded those rights to the Survey or when those authors were employed by the State of Arizona and created intellectual products as a function of their official duties. The Survey does maintain property rights to the physical and digital representations of the works.

## **QUALITY STATEMENT**

The Arizona Geological Survey is not responsible for the accuracy of the records, information, or opinions that may be contained in the files. The Survey collects, catalogs, and archives data on mineral properties regardless of its views of the veracity or accuracy of those data.

PRINTED: 08/07/2001

ARIZONA DEPARTMENT OF MINES AND MINERAL RESOURCES AZMILS DATA

PRIMARY NAME: HAINES

ALTERNATE NAMES:

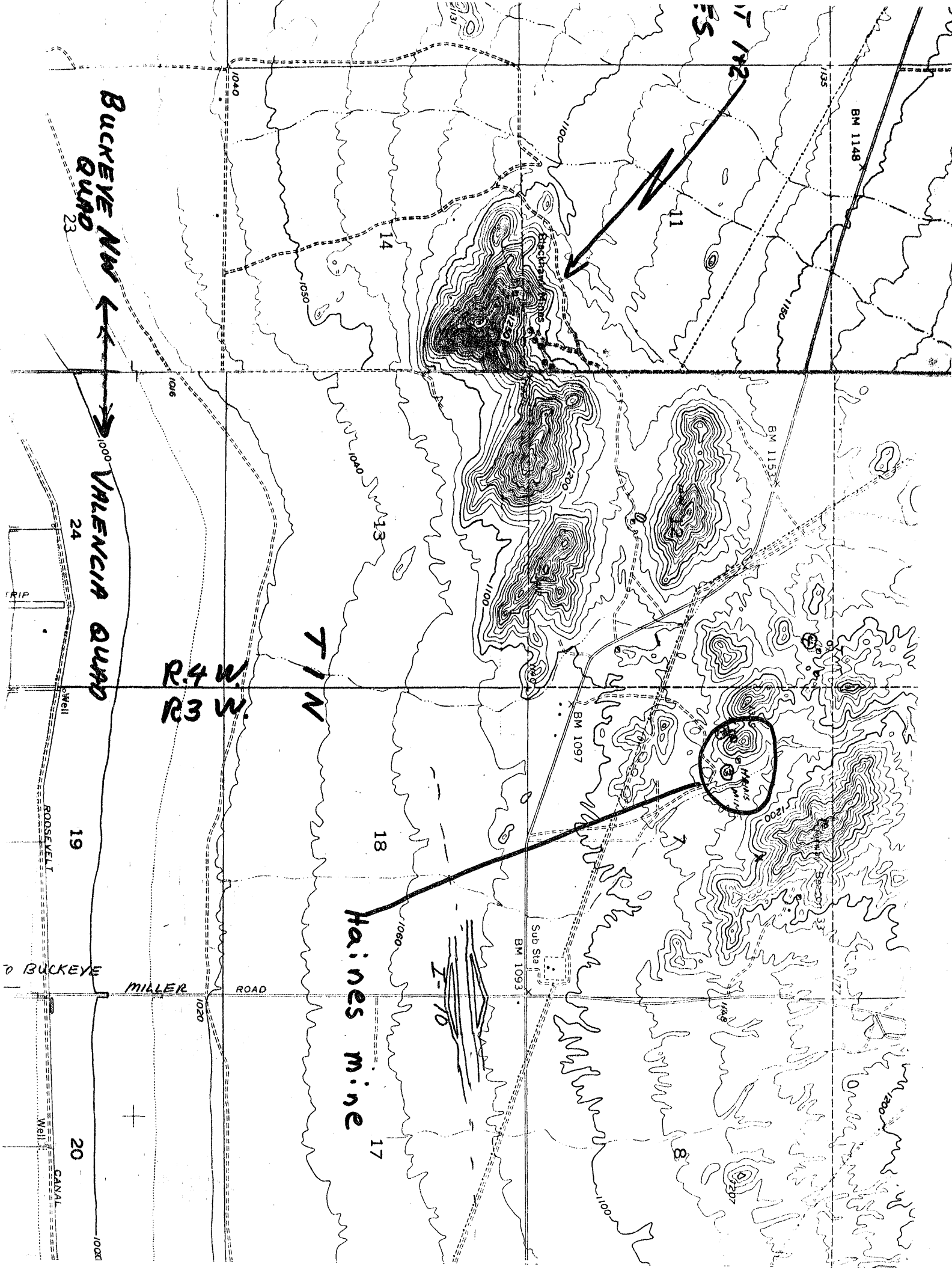
MARICOPA COUNTY MILS NUMBER: 11A

LOCATION: TOWNSHIP 1 N RANGE 3 W SECTION 7 QUARTER NW  
LATITUDE: N 33DEG 26MIN 39SEC LONGITUDE: W 112DEG 36MIN 10SEC  
TOPO MAP NAME: BUCKEYE - 15 MIN

CURRENT STATUS: UNKNOWN

COMMODITY:  
UNKNOWN

BIBLIOGRAPHY:  
USGS BUCKEYE QUAD  
BLM MINING DISTRICT SHEET  
BLM MINERAL SURVEY MS 4691



HAINES MINE

MARICOPA COUNTY  
OSBORN DISTRICT  
T1N R3W Sec 7 NW $\frac{1}{4}$

KAP WR 2/3/84: In the company of Mr. W. G. White of Buckeye, a visit was made to the Haines Mine in the NW $\frac{1}{4}$ , Sec 7, T1N R3W, Maricopa County. This property is distinct from Goldspot #1 and #2 property. It is as shown on the maps noted for a file to be created. It's location is, in part, covered by the "Buckeye Military Reservation."

---

## MARICOPA - Table Records

NUMBER 11A	FILE M	CONT 0	CONT1 N	PRNAME HAINES						
ALTNAME1				ALTNAME2						
ALTNAME3				ALTNAME4						
ALTNAME5				ALTNAME6						
CURSTAT UNKNOWN		MNAME BUCKEYE - 15 MIN			NLATDEG 33		NLATMIN 26			
NLATSEC 39	WLONGDEG 112	WLONGMIN 36	WLONGSEC 10	TOWN 1 N	RANGE 3 W	SECTION 7	QUARTER NW	COM1 UNK		
MODI1	COM2	MODI2	COM3	MODI3	COM4	MODI4				
COM5	MODI5	COM6	MODI6	COM7	MODI7					
BIB1 USGS BUCKEYE QUAD										
BIB2 BLM MINING DISTRICT SHEET										
BIB3 BLM MINERAL SURVEY MS 4691										
BIB4										

HAINES MINE

MARICOPA COUNTY  
OSBORN DISTRICT  
T1N R3W Sec. 7