



## **CONTACT INFORMATION**

Mining Records Curator  
Arizona Geological Survey  
1520 West Adams St.  
Phoenix, AZ 85007  
602-771-1601  
<http://www.azgs.az.gov>  
[inquiries@azgs.az.gov](mailto:inquiries@azgs.az.gov)

The following file is part of the

Arizona Department of Mines and Mineral Resources Mining Collection

## **ACCESS STATEMENT**

These digitized collections are accessible for purposes of education and research. We have indicated what we know about copyright and rights of privacy, publicity, or trademark. Due to the nature of archival collections, we are not always able to identify this information. We are eager to hear from any rights owners, so that we may obtain accurate information. Upon request, we will remove material from public view while we address a rights issue.

## **CONSTRAINTS STATEMENT**

The Arizona Geological Survey does not claim to control all rights for all materials in its collection. These rights include, but are not limited to: copyright, privacy rights, and cultural protection rights. The User hereby assumes all responsibility for obtaining any rights to use the material in excess of "fair use."

The Survey makes no intellectual property claims to the products created by individual authors in the manuscript collections, except when the author deeded those rights to the Survey or when those authors were employed by the State of Arizona and created intellectual products as a function of their official duties. The Survey does maintain property rights to the physical and digital representations of the works.

## **QUALITY STATEMENT**

The Arizona Geological Survey is not responsible for the accuracy of the records, information, or opinions that may be contained in the files. The Survey collects, catalogs, and archives data on mineral properties regardless of its views of the veracity or accuracy of those data.

PRINTED: 08/07/2001

ARIZONA DEPARTMENT OF MINES AND MINERAL RESOURCES AZMILS DATA

PRIMARY NAME: GUZMAN CONSTRUCTION

ALTERNATE NAMES:

DEWBERRY MS 4707, UNPATENTED  
CRUZALITE  
MARKIE'S FRACTION  
GEORGE N LOBB CLAIM  
ADAMS CLAIMS AND MILL  
IBERRI PROPERTY  
ARNETT AND TELEGRAPH CANYONS  
PICKETPOST MTN

PINAL COUNTY MILS NUMBER: 76A

LOCATION: TOWNSHIP 2 S RANGE 12 E SECTION 8 QUARTER C  
LATITUDE: N 33DEG 16MIN 28SEC LONGITUDE: W 111DEG 08MIN 14SEC  
TOPO MAP NAME: PICKETPOST MTN - 7.5 MIN

CURRENT STATUS: EXP PROSPECT

COMMODITY:

PERLITE

BIBLIOGRAPHY:

BLM AMC FILE 87677  
BLM MINING DISTRICT SHEET 610  
ADMMR DEWBERRY CLAIM FILE  
ELEVATORSKI, E.A., AZ INDUSTRIAL MINERALS,  
1980, P. 56  
CLAIMS EXTEND INTO SEC. 5 & 9

PINAL - Table Records

PRINAME	GUZMAN CONSTRUCTION			NUMBER	FILE	CONT	CONT1		
ALTNAME1				76A	A	0	Y		
ALTNAME2	DEWBERRY MS 4707 UNPATENTED			ALTNAME2	CRUZALITE				
ALTNAME3	MARKIE'S FRACTION			ALTNAME4	GEORGE N LOBB CLAIM				
ALTNAME5	ADAMS CLAIMS AND MILL			ALTNAME6	IBERRI PROPERTY				
CURSTAT	EXP PROSPECT			MNAME	NLATDEG		NLATMIN		
	PICKETPOST MTN - 7.5 MIN				33		16		
NLATSEC	WLONGDEG	WLONGMIN	WLONGSEC	TOWN	RANGE	SECTION	QUARTER	COM1	
28	111	08	14	2 S	12 E	8	C	PRL	
MOD11	COM2	MOD12	COM3	MOD13	COM4	MOD14			
COM5	MOD15	COM6	MOD16	COM7	MOD17				
BIB1	BLM AMC FILE 87677								
BIB2	BLM MINING DISTRICT SHEET 610								
BIB3	ADMMR DEWBERRY CLAIM FILE								
BIB4	ELEVATORSKI, E.A., AZ INDUSTRIAL MINERALS.								

ALLNAME - Table Records

PRINAME	NUMBER	TOWN	RANGE	SECTION	QUARTER					
GUZMAN CONSTRUCTION CO. 1	79	2 S	12 E	16	W2	COM1	COM2	COM3	COM4	COM5
NUMAKA FILE MNAME										
2 F PICKETPOST MTN - 7.5 MIN						PRL				
COM6 COM7 COUNTY										
PINAL										

*Handwritten notes:*  
 Side mt.  
 8-7-2021

ALLNAME - Table Records

PRINAME	NUMBER	TOWN	RANGE	SECTION	QUARTER		
GUZMAN CONSTRUCTION CO. 2	80B	2 S	11 E	2	S2		
NUMAKA	FILE	MNAME	COM1	COM2	COM3	COM4	COM5
2	F	PICKETPOST MTN - 7.5 MIN	PRL				
COM6	COM7	COUNTY					
		PINAL					

*Handwritten notes:*  
 8-7-2001  
 Picket Post  
 8-7-2001

ALLNAME - Table Records

PRINAME	NUMBER	TOWN	RANGE	SECTION	QUARTER		
GUZMAN CONSTRUCTION CO. 3	187B	2 S	11 E	28	SW	COM4	COM5
NUMAKA	FILE	MNAME	COM1	COM2	COM3	COM4	COM5
1	F	MINERAL MTN - 7.5 MIN	UNK				
COM6	COM7	COUNTY					
		PINAL					

*187B NE 1/4  
T2S R11E S28  
4-7-2001*

## Of Mines and Men

Approximately 400 tons per week of perlite is being shipped to customers in Texas, California and Michigan by Harborlite Corporation from its plant west of Superior. The operation is being conducted by two men mining from the Mary Ann claims. Homer Spencer is manager.

In other perlite activities in the same general area, Filters International, Inc. of Miami is mining the old Chicago pit on the old Cluff claim and processing it in its mill formerly operated by Arizona Perlite Roof Company.

Also producing perlite in the area is Mike Guzman, who sells his perlite to Mitchell Minerals in Gardena, California. Guzman crushes the ore and ships the perlite in bulk.

GUZMAN PERLITE CLAIMS

PINAL COUNTY

KAP WR 12/6/85: While on the Dec 5, 1985 Forest Service field trips, we visited the Apache Tears Caves operated by Guzman Construction. The gemstone collecting site is opened every day of the year except Christmas. The charge is currently \$2.00 to collect a 1 gallon bucket of tears. The pache Tears can also be purchased at the little rockshop at the site. The local Forest Service District Ranger has contended for years that the rockshop and collecting fee colling site are not legal uses of a mining claim, but it has remained intact as a long time Arizona rockhound tradition.

-----



Conference with Mike Guzman, Sr.

According to Guzman they are still struggling with the Forest Service. However, they have hired Hale Tognoni to battle the rangers. (He now refers the ranger to Tognoni and will not argue with him.) LAS Memo 10-11-66

---

Visited perlite plant - interviewed Guzman who has started a ready-mix plant.  
FTJ WR 2-20-70

---

Mike Guzman, Superior, mines, crushes, and coarsely sizes some perlite. GW QR 4-8-71

---

Mike Guzman continues to produce about a car of crude--1" perlite. He has a new office near the shop. His business is principally the production of concrete aggregates; 6-8 men are working. GW WR 6-21-71

---

Dir. of Mining - August 1971 - 3-5 employees.

---

Mike Guzman, Superior, continued mining and coarse crushing perlite at about 50 ton/week.  
GW QR 9/71

---

The Mike Guzman perlitemining and coarse crushing operation works at its usual rate of 50 tons per week at Superior. GW QR 2/72

---

Had a short interview with Mike Guzman. He sells his perlite to Mitchell Minerals in Gardena, California. Guzman crushes the ore and the crushed perlite is shipped bulk. His rock and sand production is expanding. FTJ WR 6/15/72

---

Guzman Construction continued to concentrate on their rock and sand department. He ships perlite to Mitchell Minerals of Gardena, California. FTJ 4 1/2 '72

---

Active Mine List - October 1972 - Empl. 3-5

---

11/27/85 The Guzman Apache Tears pit is open to the public 6 days per week. According to the person in the office they close around dusk and are closed all day on Sunday. A. Turney.

---

GUZMAN CONSTRUCTION

WR KP 5-20-77

P.O. Box 7, Superior, Arizona 85273 - Phone 689-5632 - Employees 3-5 -  
Open pit PERLITE mine - Located 2 miles west of Superior - Produces  
perlite for the Harborlite processing plant.

President . . . . . Mike Guzman Sr.  
Vice President. . . . . Mike Guzman Jr.

Mike Guzman of Guzman Construction reports that they are considering shipping material from the Silver King mine dump to the Magma mill at Superior. Reports are that the dump material runs 10-12 ounces of silver per ton. Magma's interest in milling the material is reportedly related to their drastic need for sand for underground fill and excess mill capacity. The eventual mining of the Silver King Vein is also being considered.

Met with Fred McVean, plant manager of the Harborlite perlite plant at Superior. The following information is for the DMR 1977 Directory of Active Mines in Arizona.

DEPARTMENT OF MINERAL RESOURCES

STATE OF ARIZONA  
FIELD ENGINEERS REPORT

Mine	Guzman Perlite claims	Date	June 26, 1962
District	Pioneer District - Pinal County	Engineer	Lewis A. Smith
Subject:	Interview with "Mike" Guzman at Superior		

Mike Guzman stated that they hoped to be shipping perlite to Texas Filter Media, Inc. of Houston, Texas by late July. The Guzmans plan to put up a crushing and screening plant to size the material.

DEPARTMENT OF MINERAL RESOURCES  
STATE OF ARIZONA  
FIELD ENGINEERS REPORT

Mine Guzman Perlite Claims

Date February 18, 1960

District Pioneer Dist., Pinal Co.

Engineer Lewis A. Smith

Subject: Mine visit and interview with Mike Guzman, Jr. of Superior

Location: The property adjoins the Adams mine and lies between it and the airport to the west.

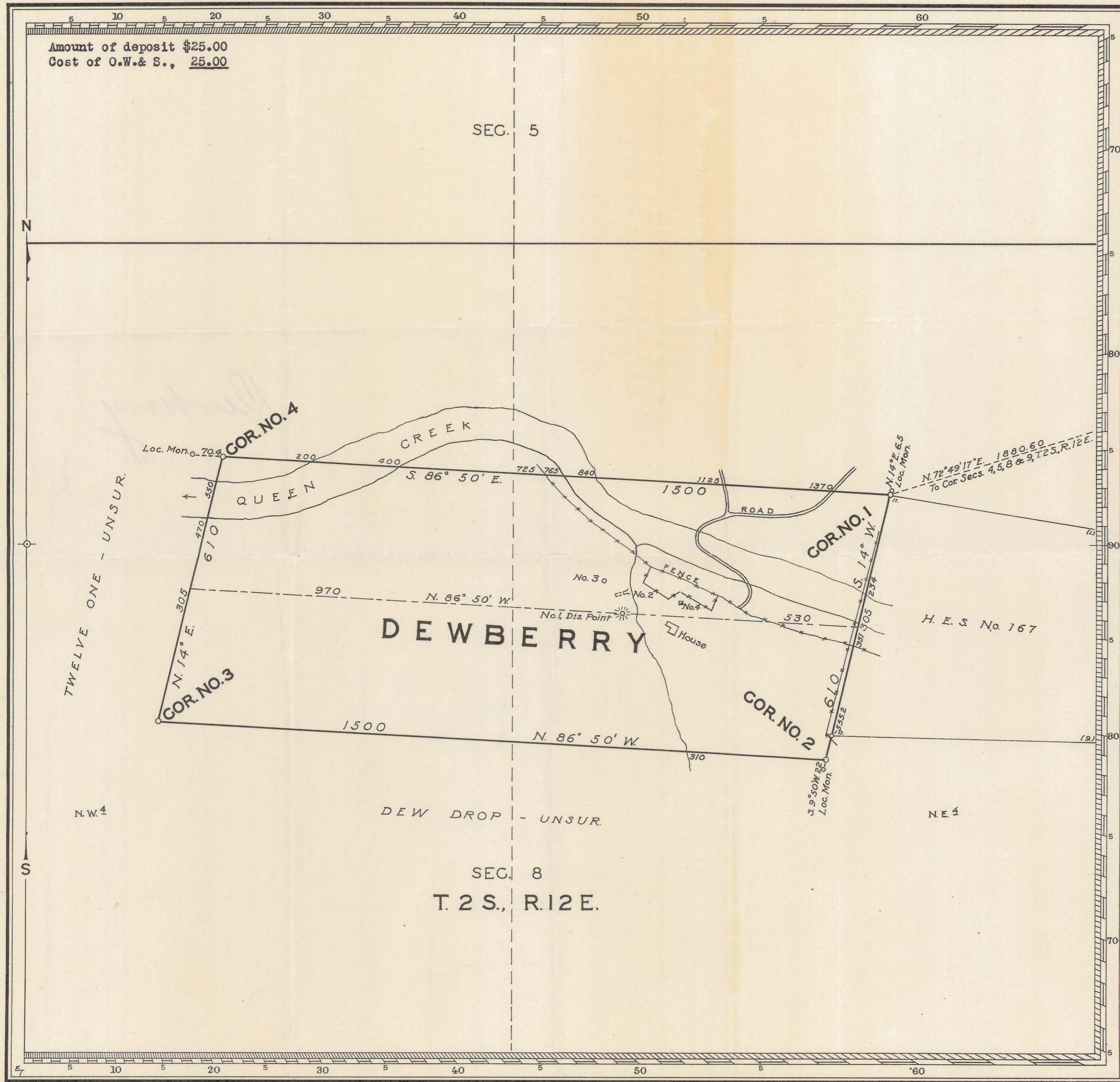
Property: 5 plus claims (unpatented)

Owners: Mike Guzman and Mike Guzman, Jr., both of Superior.

Work: Considerable stripping has exposed considerable "onion" perlite and a drill hole shows at least 50' of the material. Recently, the mine was made accessible by 1/2 mile of road. The mine lies wholly in rhyolite.

The property is for sale or lease on a royalty basis.





Mineral Survey No. 4204

ARIZONA Land District.

**PLAT**  
OF THE CLAIM OF  
GEORGE N. LOBB

KNOWN AS THE

**DEWBERRY**  
LODE

IN PIONEER MINING DISTRICT,  
PINAL COUNTY, ARIZONA

Containing an Area of \_\_\_\_\_ Acres.

Scale of 200 Feet to the inch.

Variation 14° 45' E.

SURVEYED September 21-24 1937 BY

J. N. Stevens,

Mineral Surveyor, G. L. O.

The Original Field Notes of the Survey of the Mining Claim from which this plat has been made under my direction, have been examined and approved, and are on file in this Office, and I hereby certify that they furnish such an accurate description of said Mining Claim as will, if incorporated into a patent, serve fully to identify the premises, and that such reference is made therein to natural objects or permanent monuments as will perpetuate and fix the locus thereof.

I further certify that Five Hundred Dollars worth of labor has been expended or improvements made upon, or for the benefit of, each location embraced in said mining claim by claimant

or his grantors and that said improvements consist of 1 cut & tunnel, & 2 shafts, value \$780.00

that the location of said improvements is correctly shown upon this plat, and that no portion of or interest in said labor or improvements has been included in the estimate of expenditures upon any other claim.

And I further certify that this is a correct plat of said Mining Claim made in conformity with said original field notes of the survey thereof, and the same is hereby approved.

Public Survey Office

*Shuman C. Fisher*

Phoenix, Arizona

Office Cadastral Engineer for

November 10, 1937

ARIZONA