



## **CONTACT INFORMATION**

Mining Records Curator  
Arizona Geological Survey  
1520 West Adams St.  
Phoenix, AZ 85007  
602-771-1601  
<http://www.azgs.az.gov>  
[inquiries@azgs.az.gov](mailto:inquiries@azgs.az.gov)

The following file is part of the

Arizona Department of Mines and Mineral Resources Mining Collection

## **ACCESS STATEMENT**

These digitized collections are accessible for purposes of education and research. We have indicated what we know about copyright and rights of privacy, publicity, or trademark. Due to the nature of archival collections, we are not always able to identify this information. We are eager to hear from any rights owners, so that we may obtain accurate information. Upon request, we will remove material from public view while we address a rights issue.

## **CONSTRAINTS STATEMENT**

The Arizona Geological Survey does not claim to control all rights for all materials in its collection. These rights include, but are not limited to: copyright, privacy rights, and cultural protection rights. The User hereby assumes all responsibility for obtaining any rights to use the material in excess of "fair use."

The Survey makes no intellectual property claims to the products created by individual authors in the manuscript collections, except when the author deeded those rights to the Survey or when those authors were employed by the State of Arizona and created intellectual products as a function of their official duties. The Survey does maintain property rights to the physical and digital representations of the works.

## **QUALITY STATEMENT**

The Arizona Geological Survey is not responsible for the accuracy of the records, information, or opinions that may be contained in the files. The Survey collects, catalogs, and archives data on mineral properties regardless of its views of the veracity or accuracy of those data.

PRINTED: 08/07/2001

ARIZONA DEPARTMENT OF MINES AND MINERAL RESOURCES AZMILS DATA

PRIMARY NAME: GREEN CHIP QUARRY #1

ALTERNATE NAMES:

LIGIER MARBLE QUARRY  
NATIONAL MARBLE PLACERS

COCHISE COUNTY MILS NUMBER: 785

LOCATION: TOWNSHIP 16 S RANGE 23 E SECTION 33 QUARTER NE  
LATITUDE: N 32DEG 00MIN 23SEC LONGITUDE: W 110DEG 00MIN 16SEC  
TOPO MAP NAME: DRAGOON - 7.5 MIN

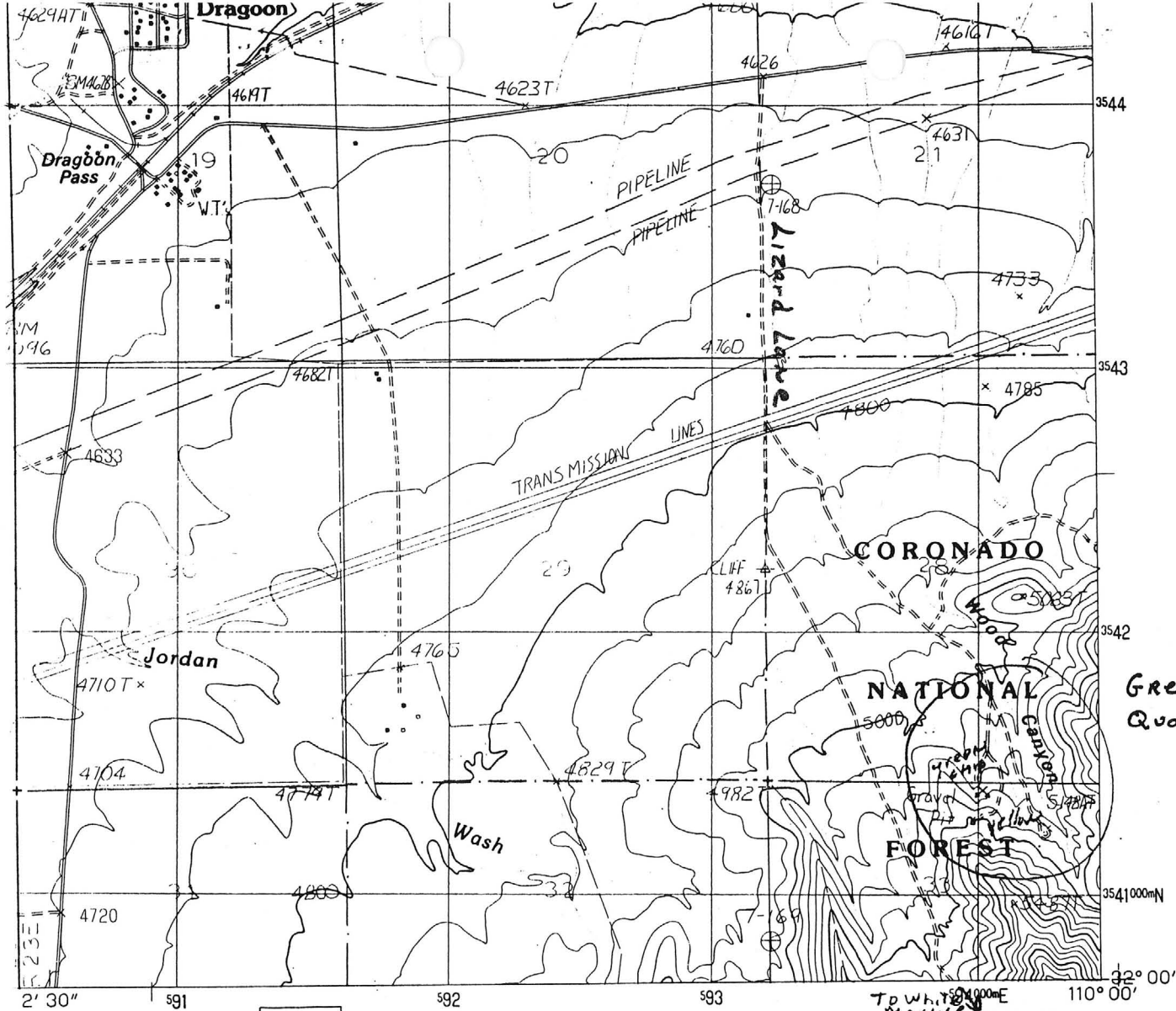
CURRENT STATUS: PAST PRODUCER

COMMODITY:

STONE MARBLE  
CALCIUM MARBLE

BIBLIOGRAPHY:

ADMMR GREEN CHIP QUARRY #1 FILE  
BAIN, GEORGE W., 1963, MARBLE OCCURRENCES IN  
THE DRAGOON PASS AREA, IN GEOL FILE



QUADRANGLE LOCATION

1	2	3	1 Deepwell Ranch
			2 Steele Hills
			3 Red Bird Hills
4		5	4 San Pedro Ranch
			5 Cochise
			6 Saint David
6	7	8	7 Knob Hill
			8 Cochise Stronghold

ADJOINING 7.5' QUADRANGLE NAMES

# ROAD LEGEND

Improved Road . . . . .  
 Unimproved Road . . . . .  
 Trail . . . . .

Interstate Route U.S. Route State Route

DRAGON, ARIZONA  
 PROVISIONAL EDITION 1985

32110-A1-TF-024

NUMBER	FILE	CONT	CONT1	PRINAME						
785	F	0	N	GREEN CHIP QUARRY #1						
ALTNAME1				ALTNAME2						
LIGIER MARBLE QUARRY				NATIONAL MARBLE PLACERS						
ALTNAME3				ALTNAME4						
ALTNAME5				ALTNAME6						
CURSTAT			MNAME			NLATDEG		NLATMIN		
PAST PRODUCER			DRAGON - 7.5 MIN			32		00		
NLATSEC	WLONGDEG	WLONGMIN	WLONGSEC	TOWN	RANGE	SECTION	QUARTER	COM1		
23	110	00	16	16 S	23 E	33	NE	STN		
MODI1	COM2	MODI2	COM3	MODI3	COM4	MODI4				
MARBLE	CA	MARBLE								
COM5	MODI5	COM6	MODI6	COM7	MODI7					
BIB1										
ADMMR GREEN CHIP QUARRY #1 FILE										
BIB2										
BAIN, GEORGE W., 1963, MARBLE OCCURRENCES IN										
BIB3										
THE DRAGON PASS AREA, IN GEOL FILE										
BIB4										