



CONTACT INFORMATION

Mining Records Curator
Arizona Geological Survey
1520 West Adams St.
Phoenix, AZ 85007
602-771-1601
<http://www.azgs.az.gov>
inquiries@azgs.az.gov

The following file is part of the

Arizona Department of Mines and Mineral Resources Mining Collection

ACCESS STATEMENT

These digitized collections are accessible for purposes of education and research. We have indicated what we know about copyright and rights of privacy, publicity, or trademark. Due to the nature of archival collections, we are not always able to identify this information. We are eager to hear from any rights owners, so that we may obtain accurate information. Upon request, we will remove material from public view while we address a rights issue.

CONSTRAINTS STATEMENT

The Arizona Geological Survey does not claim to control all rights for all materials in its collection. These rights include, but are not limited to: copyright, privacy rights, and cultural protection rights. The User hereby assumes all responsibility for obtaining any rights to use the material in excess of "fair use."

The Survey makes no intellectual property claims to the products created by individual authors in the manuscript collections, except when the author deeded those rights to the Survey or when those authors were employed by the State of Arizona and created intellectual products as a function of their official duties. The Survey does maintain property rights to the physical and digital representations of the works.

QUALITY STATEMENT

The Arizona Geological Survey is not responsible for the accuracy of the records, information, or opinions that may be contained in the files. The Survey collects, catalogs, and archives data on mineral properties regardless of its views of the veracity or accuracy of those data.

PRINTED: 07-24-2012

ARIZONA DEPARTMENT OF MINES AND MINERAL RESOURCES AZMILS DATA

PRIMARY NAME: GREENBURG

ALTERNATE NAMES:
BLACK HAWK
SUNSET
BLUE JAY

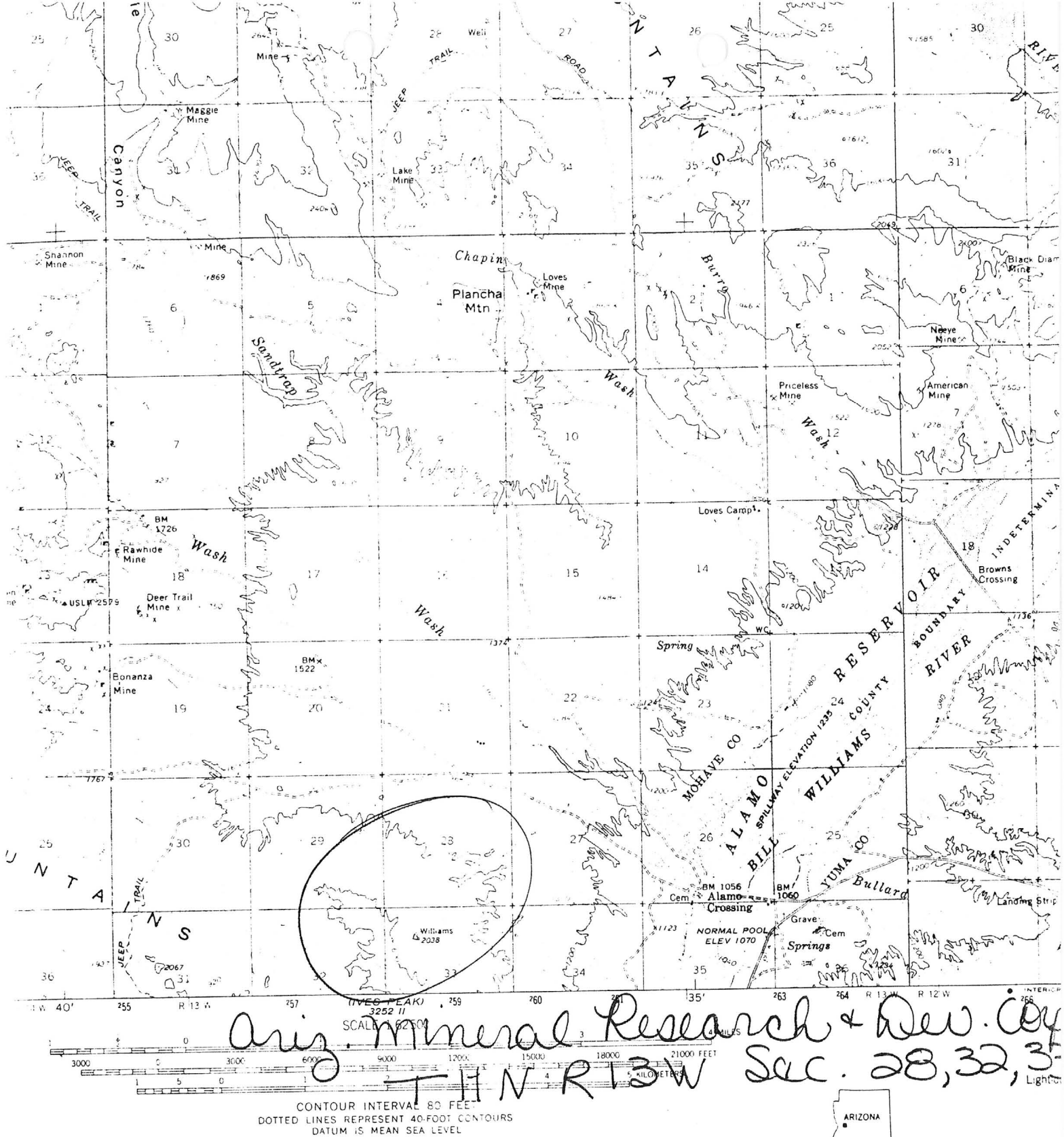
MOHAVE COUNTY MILS NUMBER: 370A

LOCATION: TOWNSHIP 11 N RANGE 13 W SECTION 28 QUARTER --
LATITUDE: N 34DEG 15MIN 46SEC LONGITUDE: W 113DEG 37MIN 03SEC
TOPO MAP NAME: ARTILLERY PEAK - 7.5 MIN

CURRENT STATUS: UNKNOWN

COMMODITY:
SILVER
COPPER OXIDE
GOLD LODE

BIBLIOGRAPHY:
ADMMR GREENBURG FILE
ADDITIONAL WORKINGS SEC. 33 T11N-R13W



THIS MAP COMPLIES WITH NATIONAL MAP ACCURACY STANDARDS
FOR SALE BY U. S. GEOLOGICAL SURVEY, DENVER, COLORADO 80225, OR WASHINGTON, D. C. 20242
A FOLDER DESCRIBING TOPOGRAPHIC MAPS AND SYMBOLS IS AVAILABLE ON REQUEST

Artillery 15'

NUMBER 370A	FILE F	CONT 0	CONT1 N	PRNAME GREENBURG					
ALTNAME1 BLACK HAWK				ALTNAME2 SUNSET					
ALTNAME3 BLUE JAY				ALTNAME4					
ALTNAME5				ALTNAME6					
CURSTAT UNKNOWN		MNAME ARTILLERY PEAK - 7.5 MIN			NLATDEG 34		NLATMIN 15		
NLATSEC 46	WLONGDEG 113	WLONGMIN 37	WLONGSEC 03	TOWN 11 N	RANGE 13 W	SECTION 28	QUARTER --	COM1 AG	
MODI1	COM2 CU	MODI2	COM3 AU	MODI3 LODE	COM4	MODI4			
COM5	MODI5	COM6	MODI6	COM7	MODI7				
BIB1 ADMMR GREENBURG FILE									
BIB2 ADDITIONAL WORKINGS SEC. 33 T11N-R13W									
BIB3									
BIB4									

Name of Mine or Prospect:	Township	Range	Section	Priority
Black Hawk	11N	13W	28	C
Principal Minerals:	1:250,000 Quad		7.5' - 15' Quad	
	Prescott		Artillery Peak	
Associated Minerals:	District		Principal Product	
	Artillery Mtn.			
Type of Operation:	County	State	Type of Deposit	
	Mohave	Ar.		
Ownership or Controlling Interest:				
Access:				
Location questionable.				
Structural Control or Geological Association:				
"Older Precambrian Age, Schist."2				
Age of Mineralization:				
Production History		Geochemical Analyses		
References				
1) Mallach (1977), p. 33.				
2) Wilson & Moore (1959), Geologic map.				

GREENBERG

Arizona Mineral Research and Development Corp. Claims
sec. 1, 2, 11-14 T. 14 N., R. 11 W. and *sec. 28, 32, 33 T. 11 N., R. 13 W.
Mohave County

reference: Arizona Dept of Mineral Resources
Arizona Mineral Research and Development Corp. (file)

minerals: *gold, *copper, *silver, magnesite

present owner: Arizona Mineral Research and
Development Corp. of Phoenix, Az. (1964 information)

history of the area:

By 1964 the 106 claims (Black Hawk (30),
Sunset (30), Greenburg (28), and Blue Jay (18))
were owned by the Arizona Mineral Research
and Development Corporation. Some work
was done on this property located in
sec. 28, 32, 33 T. 11 N., R. 13 W. The claims
in sec. 1, 2, 11-14 of T. 14 N., R. 11 W. are known
as the W.L. Holland Delomitte, magnesite
claims. In 1967 these properties were under
lease to a New York Company.

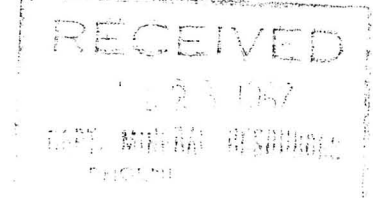
116

Robert V. West.

1603 Palma Plaza,
Austin, Texas 78703

July 24, 1967.

Mr. Frank P. Knight,
Director, Dept. of Mineral Resources,
Mineral Building, Fairgrounds,
Phoenix, Arizona 85007.



Dear Mr. Knight:

Thanks for yours of July 9th, 1967 regarding the Magnesite:

I wrote to Mr. Holland, who advised these claims had been held
by a Corporation, known as:

Arizona Research and Development Corporation,
5526 N. 30 th Drive, Phoenix, Ariz. 85019

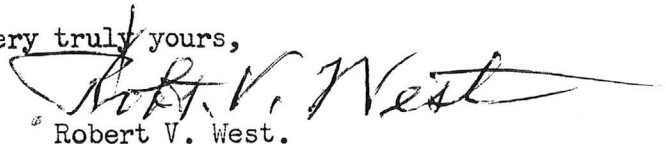
Viz: E.E. Lowrey, - President,
C.E. Mills, - Vice Pres - inactive
F.D. Powell - Secty Treas.
Henry Bartley - Member ?
William Holland " ?

properties all under lease to some New York Company - includes machinery.

Can you tell me the area in which these claims are located? If
so, would appreciate it; stamped envelope enclosed. I have secured cop-
ies of the nonmetallic and metallic maps from Arizona Bureau of Mines,
Tucson, which I have gone over, but cannot check any known deposits of
Magnesite; would like to write to County Clerk, to get copy of the lease,
to see what it covers; asked Mr. Holland to give me County information
for this purpose, but as yet have not heard from him; so suppose he is
busy on other matters.

Thanks for whatever information you can give me.

Very truly yours,


Robert V. West.

rvw/plp/AM
Encl. am stpd. ret. envp.

STATE OF ARIZON
DEPARTMENT OF MINERAL RESOURCES
MINERAL BUILDING, FAIRGROUNDS
PHOENIX, ARIZONA 85007



July 25, 1967

Mr. Robert V. West
1603 Palma Plaza
Austin, Texas 78703


Dear Mr. West:

RE: Your inquiry of July 24.

The W. L. Holland Dolomitic, magnesite claims are approximately halfway between Wikieup and Bagdad, near Burro Creek. Access is gained from Highway 93 to Burro Creek (8 miles), then northerly $1\frac{1}{2}$ miles. They lie in Sec. 1 and 2, 11, 12, 13 and 14, T. 14 N., R. 11 W. This would place them in Mohave County. Kingman is the County Seat and the County Recorder there would have recording information, but not necessarily the leasing recordation as that is not required.

If we can assist you further, let us know.

Very truly yours,


F. T. Johnson,
Field Engineer

C
O
P
Y

DEPARTMENT OF MINERAL RESOURCES
STATE OF ARIZONA
FIELD ENGINEERS REPORT

FILED
APR 23 1964

Mine ^{Mineral} ARIZONA RESEARCH AND DEV. CORP. CLAIMS Date 4/23/64
District 'BLACK HAWK,' 'SUNSET,' 'GREENBURG,' 'BLUEJAY' Engineer LEWIS A. SMITH
SIGNAL DISTRICT, MOHAVE COUNTY
Subject: Conference with Edwin Lowrey, 4/23/64

LOCATION: Secs 28, 32, 33, T11N, R13W.
7 miles by road (4 airline) W of Alamo Crossing and approx. 2-3 airline miles N of the Santa Maria River, in east part of Rawhide Mtns.

<u>PROPERTY:</u>	100 plus claims:	Unpatented (work done to 1963)
	Black Hawk	30 plus or minus (some to be added)
	Sunset	30 " " " " " "
	Greenburg	28
	Blue Jay	18 (older group)
		<u>106</u> (plus - minus)

OWNER: ^{Mineral} Arizona Research and Dev. Corp., Phoenix
Agent: Edwin E. Lowrey, President, 3308 W. Roma Ave., Phoenix (266-1457)

METALS: Copper, Silver, Gold (chalcopyrite and oxidized copper minerals).

WORK: Work, of recent age, has mostly been done on a mineralized zone, up to 30 feet wide, that lies on both sides of a fracture, mostly in bulldozer cuts. According to Lowrey the oxidized "ore" lies on one side and sulphides on the other side (predominantly) of a strong fracture. Assays of copper content, including several samples by Herb Lewis, El Paso Natural Gas Co., Geologist, indicated streaks that assay 1 to 5 per cent copper (in the better streaks) interspersed alternately with very low grade bands (0.1 to 0.8 per cent) over a total sample width of 30 feet. (Localized small lenses ran up to 20 per cent). The ore largely occurs in limestone, according to Lowrey. The average copper, across the mineral zone, was figured at around 1 per cent. El Paso is still in the process of examining the area.

GENERAL GEOLOGY:

The immediate area consists of Precambrian (?) Schist capped by several areas of upper Paleozoic Redwall and Martin limestone. This type of geology is interrupted, SW of the mine area by a NW-SE trending fault block that consists of granitic gneiss that is overlain by Paleozoic limestone and late Mesozoic or early Tertiary sandstone, shale and conglomerate. NE of the mine area the sandstone, shale and conglomerate appears to overlie the schist and in turn are probably covered, farther N and NE, by late Tertiary and Quaternary sediments and Quaternary basalt. The limestone residual masses (in one of which the mine lies) are mainly exposed in R12-14W and T11N (Ariz. Bureau of Mines, Mohave County Geological Map).

ADJACENT CLAIM GROUPS: (1) The Rawhide Group adjoins the property on the E and (?) the New England Group (3 patented claims) on the W.