



CONTACT INFORMATION

Mining Records Curator
Arizona Geological Survey
1520 West Adams St.
Phoenix, AZ 85007
602-771-1601
<http://www.azgs.az.gov>
inquiries@azgs.az.gov

The following file is part of the

Arizona Department of Mines and Mineral Resources Mining Collection

ACCESS STATEMENT

These digitized collections are accessible for purposes of education and research. We have indicated what we know about copyright and rights of privacy, publicity, or trademark. Due to the nature of archival collections, we are not always able to identify this information. We are eager to hear from any rights owners, so that we may obtain accurate information. Upon request, we will remove material from public view while we address a rights issue.

CONSTRAINTS STATEMENT

The Arizona Geological Survey does not claim to control all rights for all materials in its collection. These rights include, but are not limited to: copyright, privacy rights, and cultural protection rights. The User hereby assumes all responsibility for obtaining any rights to use the material in excess of "fair use."

The Survey makes no intellectual property claims to the products created by individual authors in the manuscript collections, except when the author deeded those rights to the Survey or when those authors were employed by the State of Arizona and created intellectual products as a function of their official duties. The Survey does maintain property rights to the physical and digital representations of the works.

QUALITY STATEMENT

The Arizona Geological Survey is not responsible for the accuracy of the records, information, or opinions that may be contained in the files. The Survey collects, catalogs, and archives data on mineral properties regardless of its views of the veracity or accuracy of those data.

PRINTED: 08/07/2001

ARIZONA DEPARTMENT OF MINES AND MINERAL RESOURCES AZMILS DATA

PRIMARY NAME: GREAT VIEW

ALTERNATE NAMES:

GRANDVIEW
FALLS GROUP

GILA COUNTY MILS NUMBER: 301

LOCATION: TOWNSHIP 5 N RANGE 17 E SECTION 35 QUARTER C
LATITUDE: N 33DEG 46MIN 55SEC LONGITUDE: W 110DEG 30MIN 18SEC
TOPO MAP NAME: BLUE HOUSE MTN - 15 MIN

CURRENT STATUS: PAST PRODUCER

COMMODITY:

ASBESTOS SHORT FIBER
IRON SULFIDE

BIBLIOGRAPHY:

ADMMR GREAT VIEW FILE
BLM MINING DISTRICT SHEET 189
STEWART L A CHRYS-ASB DEPTS AZ USBM IC 7706
1955 P 62
USGS BULL 1027-N, P. 617, 658
WILSON E D ASB DEPTS AZ AZBM BULL 126 1928
P 60 & 96
ADMMR MAPS (UPSTAIRS DRAWER 7)

05/13/86

ARIZONA DEPARTMENT OF MINES AND MINERAL RESOURCES FILE DATA

PRIMARY NAME: GREAT VIEW

ALTERNATE NAMES:

GRANDVIEW
FALLS GROUP

GILA COUNTY MILS NUMBER: 301

LOCATION: TOWNSHIP 5 N RANGE 17 E SECTION 35 QTR. C
LATITUDE: N 33DEG 46MIN 55SEC LONGITUDE: W 110DEG 30MIN 18SEC

TOPO MAP NAME: BLUE HOUSE MTN - 15 MIN

CURRENT STATUS: PAST PRODUCER

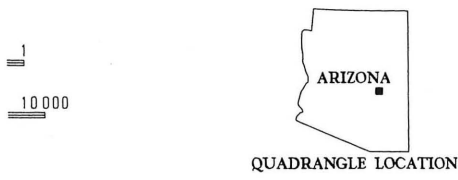
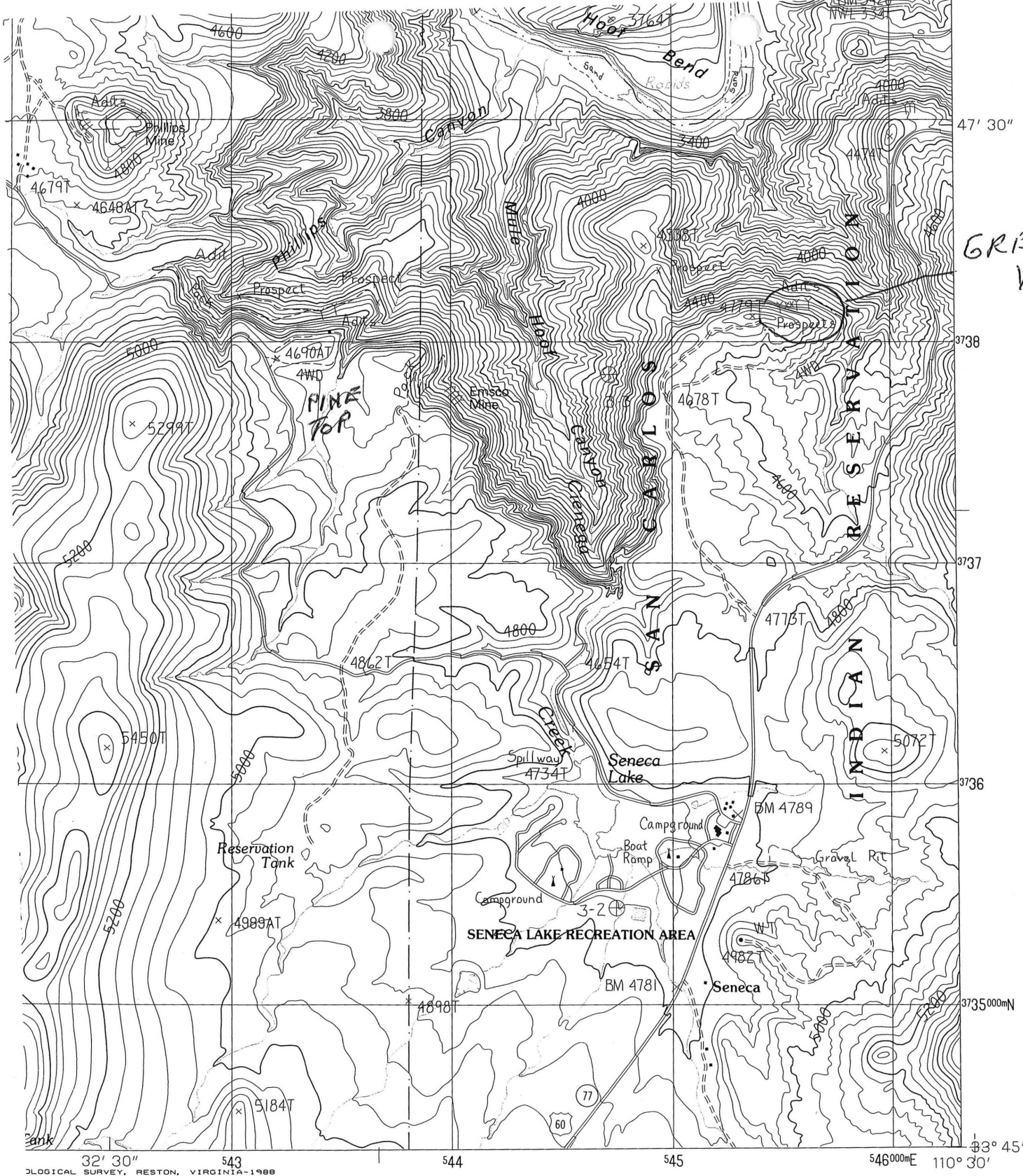
COMMODITY:

ASBESTOS-(M) SHORT FIBER -
PRIMARY

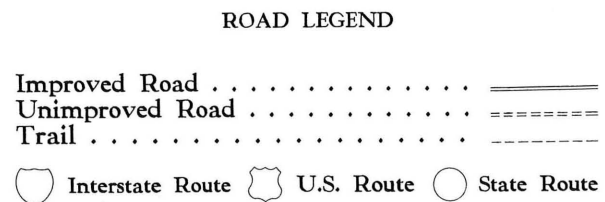
IRON-(M) MAGNETITE - BYPRODUCT

BIBLIOGRAPHY:

ADMMR GREAT VIEW FILE
BLM MINING DISTRICT SHEET 189
STEWART L A CHRYS-ASB DEPTS AZ USBM IC 7706
1955 P 62
USGS BULL 1027-N, P. 617, 658
WILSON E D ASB DEPTS AZ AZBM BULL 126 1928
P 60 & 96
ADMMR MAPS (UPSTAIRS DRAWER 7)



1	2	3	1 Double Buttes
			2 Blue House Mountain
			3 Cibecue Peak
4		5	4 Picacho Colorado
			5 Beckers Butte
			6 Haystack Butte
			7 Chrysotile
6	7	8	8 Brushy Canyon



MULE HOOF BEND, ARIZONA PROVISIONAL EDITION 1988



Great View
T5N R17E
Sec. 35
C

4 Miles
21000 Feet
0.1 Kilometers

WASHINGTON 25, D. C.
ABLE ON REQUEST

INTERIOR GEOLOGICAL SURVEY, WASHINGTON, D. C. 1958
MR 1727

ROAD CLASSIFICATION

HARD-SURFACE ALL WEATHER ROADS		DRY WEATHER ROADS	
Heavy-duty	4 LANE 6 LANE	Improved dirt	-----
Medium-duty	4 LANE 16 LANE	Unimproved dirt	-----
Loose-surface, graded, or narrow hard-surface - - -			
□ U. S. Route		○ State Route	

BLUE HOUSE MTN., ARIZ.

N3345-W11030/15

1946

10
GI

NUMBER 301	FILE F	CONT 0	CONT1 N	PRNAME GREAT VIEW				
ALTNAME1 GRANDVIEW				ALTNAME2 FALLS GROUP				
ALTNAME3				ALTNAME4				
ALTNAME5				ALTNAME6				
CURSTAT PAST PRODUCER		MNAME BLUE HOUSE MTN - 15 MIN			NLATDEG 33		NLATMIN 46	
NLATSEC 55	WLONGDEG 110	WLONGMIN 30	WLONGSEC 18	TOWN 5 N	RANGE 17 E	SECTION 35	QUARTER C	COM1 ASB
MODI1 SHORT FIBER	COM2 FE	MODI2 SULFIDE	COM3	MODI3	COM4	MODI4		
COM5	MODI5	COM6	MODI6	COM7	MODI7			
BIB1 ADMMR GREAT VIEW FILE								
BIB2 BLM MINING DISTRICT SHEET 189								
BIB3 STEWART L A CHRYS-ASB DEPTS AZ USBM IC 7706								
BIB4 1955 P 62								

GREAT VIEW ASBESTOS

GILA COUNTY

Active Mine List Oct. 1, 1959

Active Mine List April 1969 - Rex Town, Mgr., P.O. Box 812, Globe

Active Mine List May 1970 - Rex Town, Mgr., P.O. Box 812, Globe

The Town plant treated asbestos from its Grand View mine at a reduced rate during the year. FTJ Annual Report 6-30-70

Active Mine List Oct. 1970 - 3-7 men - Rex Town

The Town mill and Phillips and Grand View operated at about the same rate as the last quarter. FTJ QR 9/71

Filed -
10-23-59

DEPARTMENT OF MINERAL RESOURCES
STATE OF ARIZONA
FIELD ENGINEERS REPORT

Mine Great View Asbestos (Grandview) Date September 25, 1959
District Seneca District, Gila County Engineer Lewis A. Smith
Subject: Report by J.R. Pinkert to Lewis A. Smith

Owner: Guy Phillips, Globe, Arizona

Lessee: J. R. Pinkert, Globe, Arizona

Location: Approximately Sec. 35, T5N, R17E. The property is just west of Highway 60, 2.7 miles north of Seneca.

Property: The property was located in 1921 and was controlled in 1953 by Earnest Victor under a lease. When Guy Phillips secured the property was not learned. Pinkert leased it about a year ago.

Work: The bed is developed by an adit toward the east for a depth of 80 ft. Considerable lateral work from the adit has been done. According to Pinkert there is an exposure 600 ft. in length. The asbestos bearing zone is about 5 ft. or less in thickness and is divided by serpentine into two sub-zones. The upper zone has three bands of soft fiber ranging from $\frac{1}{2}$ inch up to 1 inch in length. The second zone is 18" in overall thickness and contains numerous fiber bands ranging from $\frac{1}{32}$ up to $\frac{1}{4}$ " in thickness.

The geological relationship is described in L. A. Stewart "Chrysolite Asbestos Deposits of Arizona," U.S. Bureau of Mines, IC 7706, p 62-63.

Recent development work by Pinkert has shown much more asbestos than is indicated in Stewart's Report, according to Pinkert.