



CONTACT INFORMATION

Mining Records Curator
Arizona Geological Survey
1520 West Adams St.
Phoenix, AZ 85007
602-771-1601
<http://www.azgs.az.gov>
inquiries@azgs.az.gov

The following file is part of the

Arizona Department of Mines and Mineral Resources Mining Collection

ACCESS STATEMENT

These digitized collections are accessible for purposes of education and research. We have indicated what we know about copyright and rights of privacy, publicity, or trademark. Due to the nature of archival collections, we are not always able to identify this information. We are eager to hear from any rights owners, so that we may obtain accurate information. Upon request, we will remove material from public view while we address a rights issue.

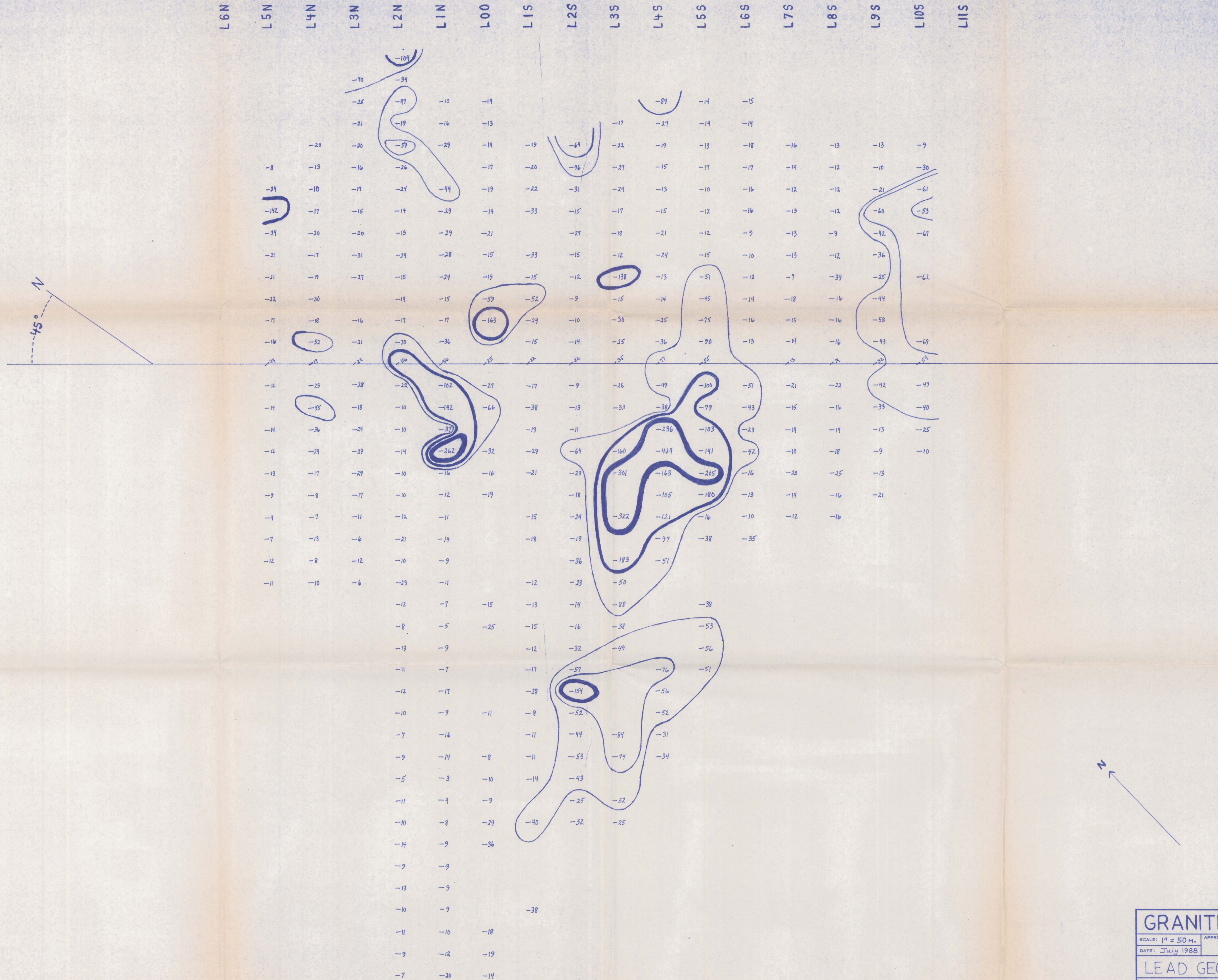
CONSTRAINTS STATEMENT

The Arizona Geological Survey does not claim to control all rights for all materials in its collection. These rights include, but are not limited to: copyright, privacy rights, and cultural protection rights. The User hereby assumes all responsibility for obtaining any rights to use the material in excess of "fair use."

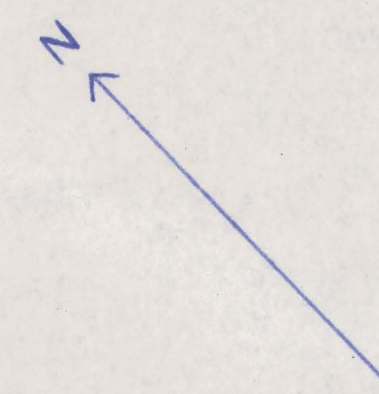
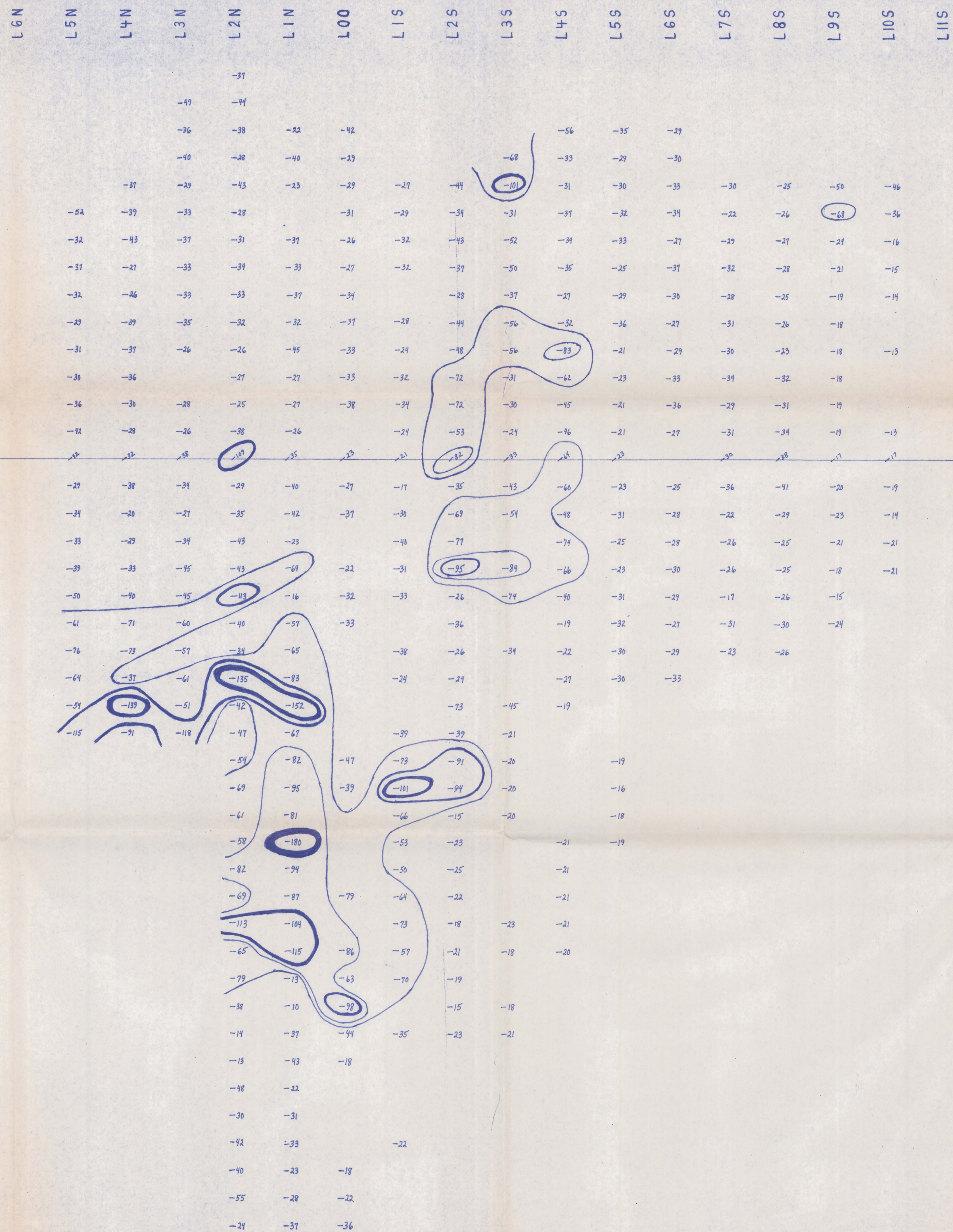
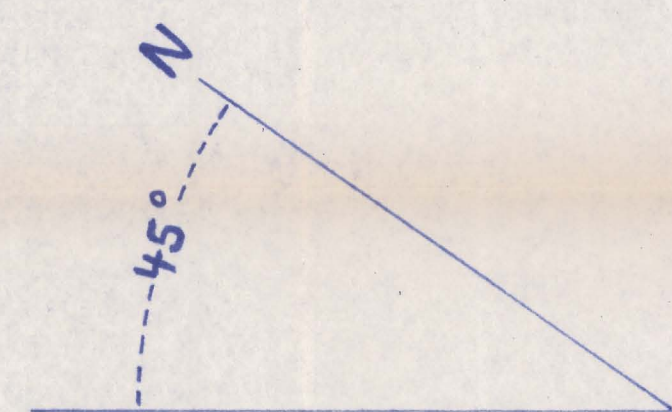
The Survey makes no intellectual property claims to the products created by individual authors in the manuscript collections, except when the author deeded those rights to the Survey or when those authors were employed by the State of Arizona and created intellectual products as a function of their official duties. The Survey does maintain property rights to the physical and digital representations of the works.

QUALITY STATEMENT

The Arizona Geological Survey is not responsible for the accuracy of the records, information, or opinions that may be contained in the files. The Survey collects, catalogs, and archives data on mineral properties regardless of its views of the veracity or accuracy of those data.



GRANITE KEY GROUP		
SCALE: 1" = 50 M.	APPROVED BY:	DRAWN BY: B. BEST
DATE: July 1988		REVISED:
LEAD GEOCHEMISTRY (PPM)		
T14N - R11W - Sec. 26		DRAWING NUMBER: GK-11



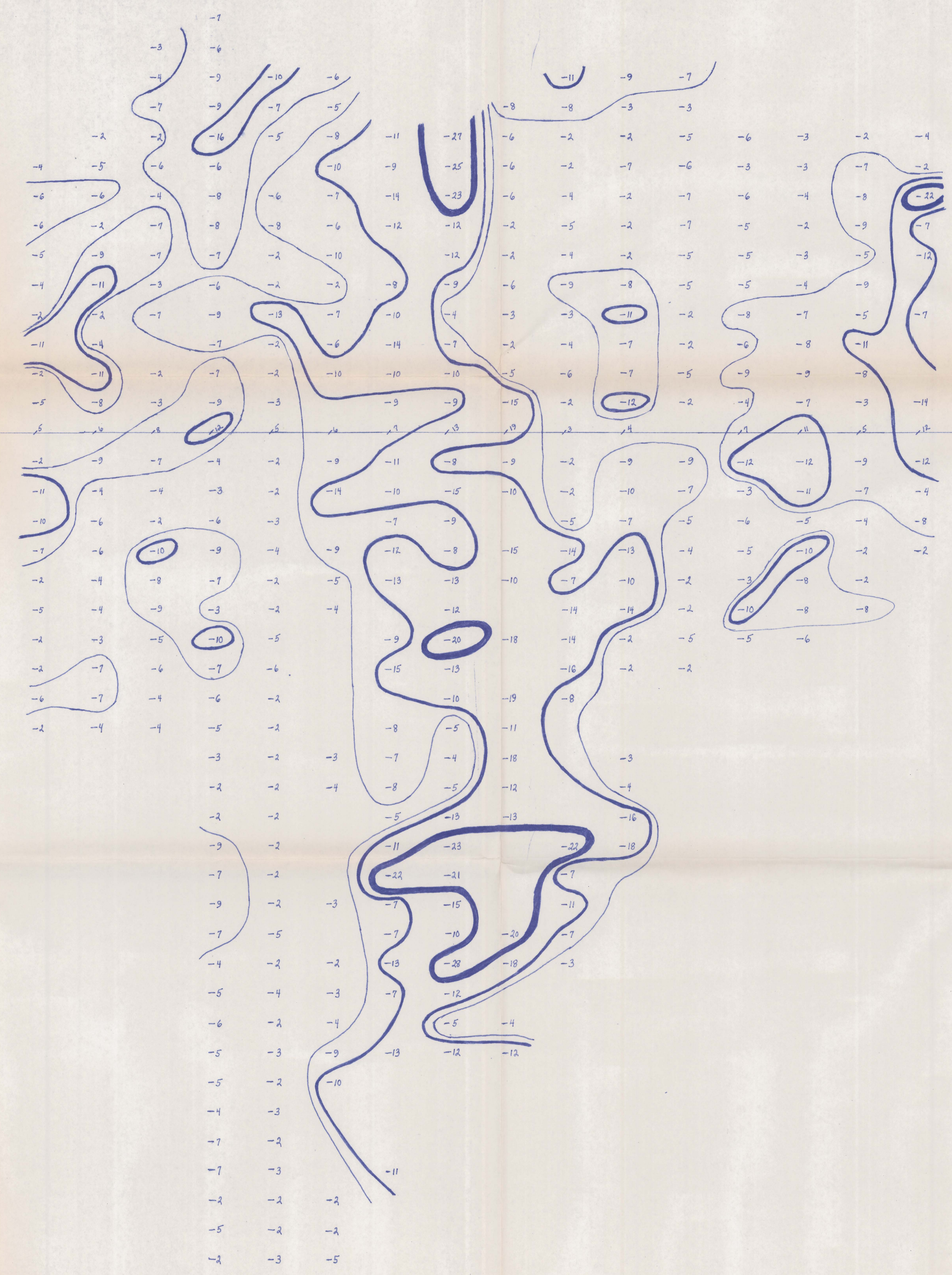
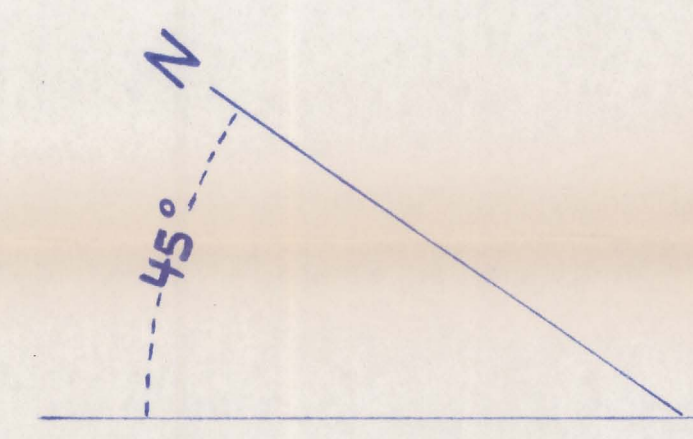
GRANITE KEY GROUP

SCALE: 1" = 50 M. APPROVED BY: DRAWN BY: B. Best
DATE: July 1988 REVISED

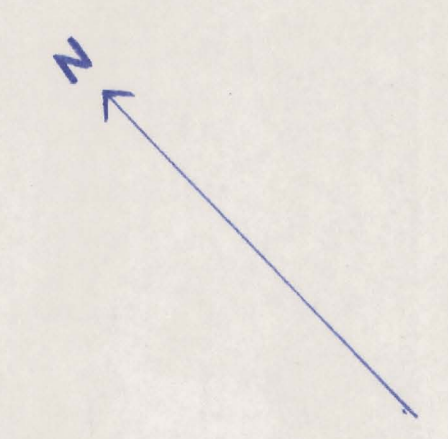
COPPER GEOCHEMISTRY (PPM)

T14N - R 11 W - Sec. 26 DRAWING NUMBER GK-10

L6N L5N L4N L3N L2N L1N L00 L1S L2S L3S L4S L5S L6S L7S L8S L9S L10S L11S



3+50 EAST
3+00 EAST
2+50 EAST
2+00 EAST
1+50 EAST
1+00 EAST
0+50 EAST
BASELINE
0+50 WEST
1+00 WEST
1+50 WEST
2+00 WEST
2+50 WEST
3+00 WEST
3+50 WEST
4+00 WEST
4+50 WEST
5+00 WEST
5+50 WEST
6+00 WEST



601000
9/14 11/10/10
85/10

GRANITE KEY GROUP			
SCALE: 1" = 50 M.		APPROVED BY:	
DATE: JULY 1988		DRAWN BY: B. BEST	
ARSENIC GEOCHEMISTRY (PPM)		REVISED	
T14N - R11W - Sec. 26		DRAWING NUMBER	
		GK-9	

L11N L10N L9N L8N L7N L6N L5N L4N L3N L2N L1N L00 L1S L2S L3S L4S L5S L6S L7S L8S L9S L10S L11S L12S L13S L14S L15S L16S L17S

3+50 EAST
3+00 EAST
2+50 EAST
2+00 EAST
1+50 EAST
1+00 EAST
0+50 EAST
BASELINE
0+50 WEST
1+00 WEST
1+50 WEST
2+00 WEST
2+50 WEST
3+00 WEST
3+50 WEST
4+00 WEST
4+50 WEST
5+00 WEST
5+50 WEST
6+00 WEST



GRANITE KEY GROUP		
SCALE: 1" = 50 M.	APPROVED BY:	DRAWN BY: B. BEST
DATE: July 1988		REVISED:
MINERAL EXPOSURES		
T.14 N.	R.11 W.	SEC. 25 & 26
		DRAWING NUMBER: GK-12