



CONTACT INFORMATION

Mining Records Curator
Arizona Geological Survey
1520 West Adams St.
Phoenix, AZ 85007
602-771-1601
<http://www.azgs.az.gov>
inquiries@azgs.az.gov

The following file is part of the

Arizona Department of Mines and Mineral Resources Mining Collection

ACCESS STATEMENT

These digitized collections are accessible for purposes of education and research. We have indicated what we know about copyright and rights of privacy, publicity, or trademark. Due to the nature of archival collections, we are not always able to identify this information. We are eager to hear from any rights owners, so that we may obtain accurate information. Upon request, we will remove material from public view while we address a rights issue.

CONSTRAINTS STATEMENT

The Arizona Geological Survey does not claim to control all rights for all materials in its collection. These rights include, but are not limited to: copyright, privacy rights, and cultural protection rights. The User hereby assumes all responsibility for obtaining any rights to use the material in excess of "fair use."

The Survey makes no intellectual property claims to the products created by individual authors in the manuscript collections, except when the author deeded those rights to the Survey or when those authors were employed by the State of Arizona and created intellectual products as a function of their official duties. The Survey does maintain property rights to the physical and digital representations of the works.

QUALITY STATEMENT

The Arizona Geological Survey is not responsible for the accuracy of the records, information, or opinions that may be contained in the files. The Survey collects, catalogs, and archives data on mineral properties regardless of its views of the veracity or accuracy of those data.

PRINTED: 07/30/2001

ARIZONA DEPARTMENT OF MINES AND MINERAL RESOURCES AZMILS DATA

PRIMARY NAME: GOLDEN TREASURE

ALTERNATE NAMES:

LA PAZ COUNTY MILS NUMBER: 206

LOCATION: TOWNSHIP 7 N RANGE 14 W SECTION 25 QUARTER

LATITUDE: N 33DEG 55MIN 00SEC LONGITUDE: W 113DEG 40MIN 34SEC

TOPO MAP NAME: SALOME - 15 MIN

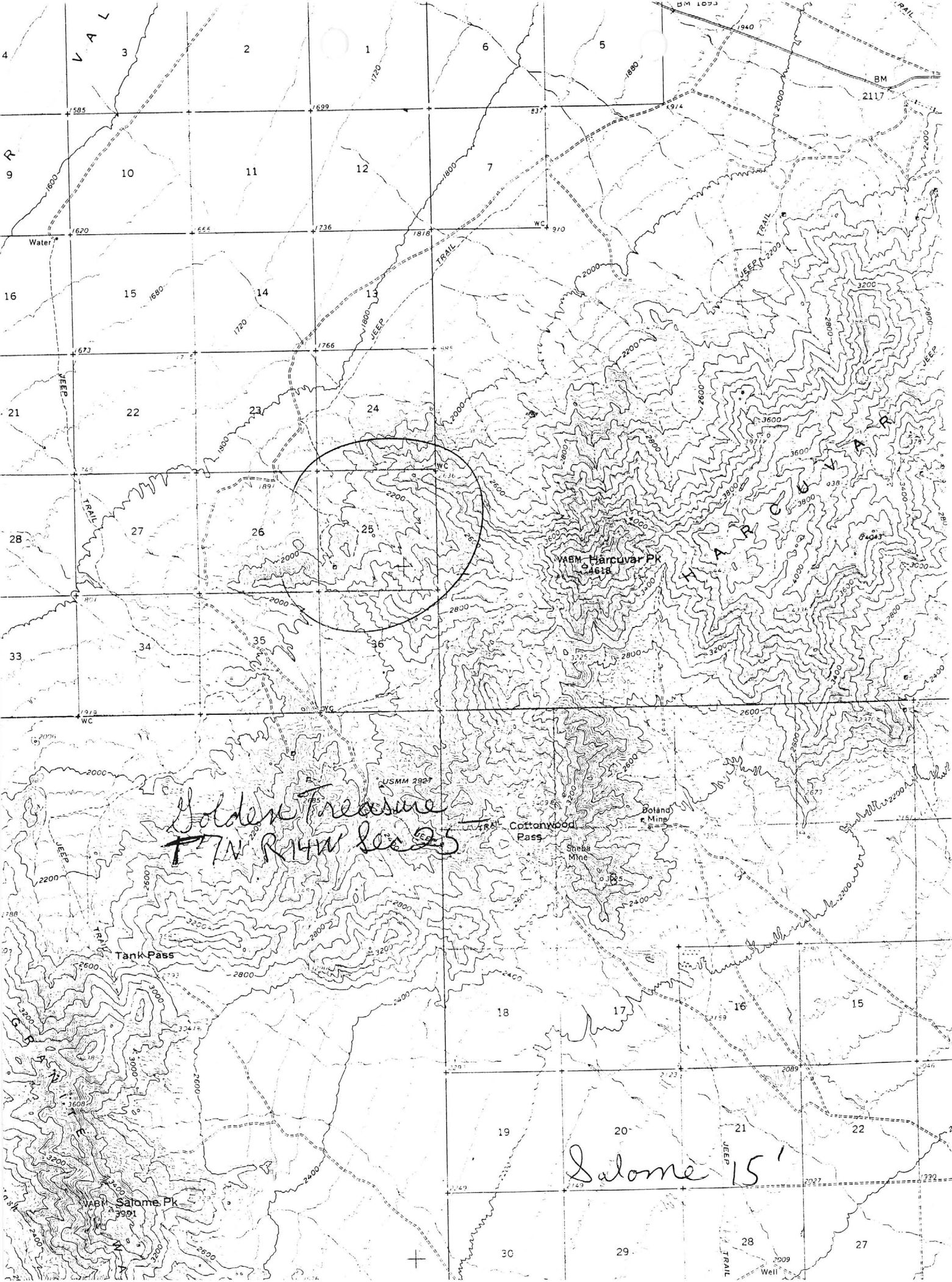
CURRENT STATUS: PAST PRODUCER

COMMODITY:

GOLD

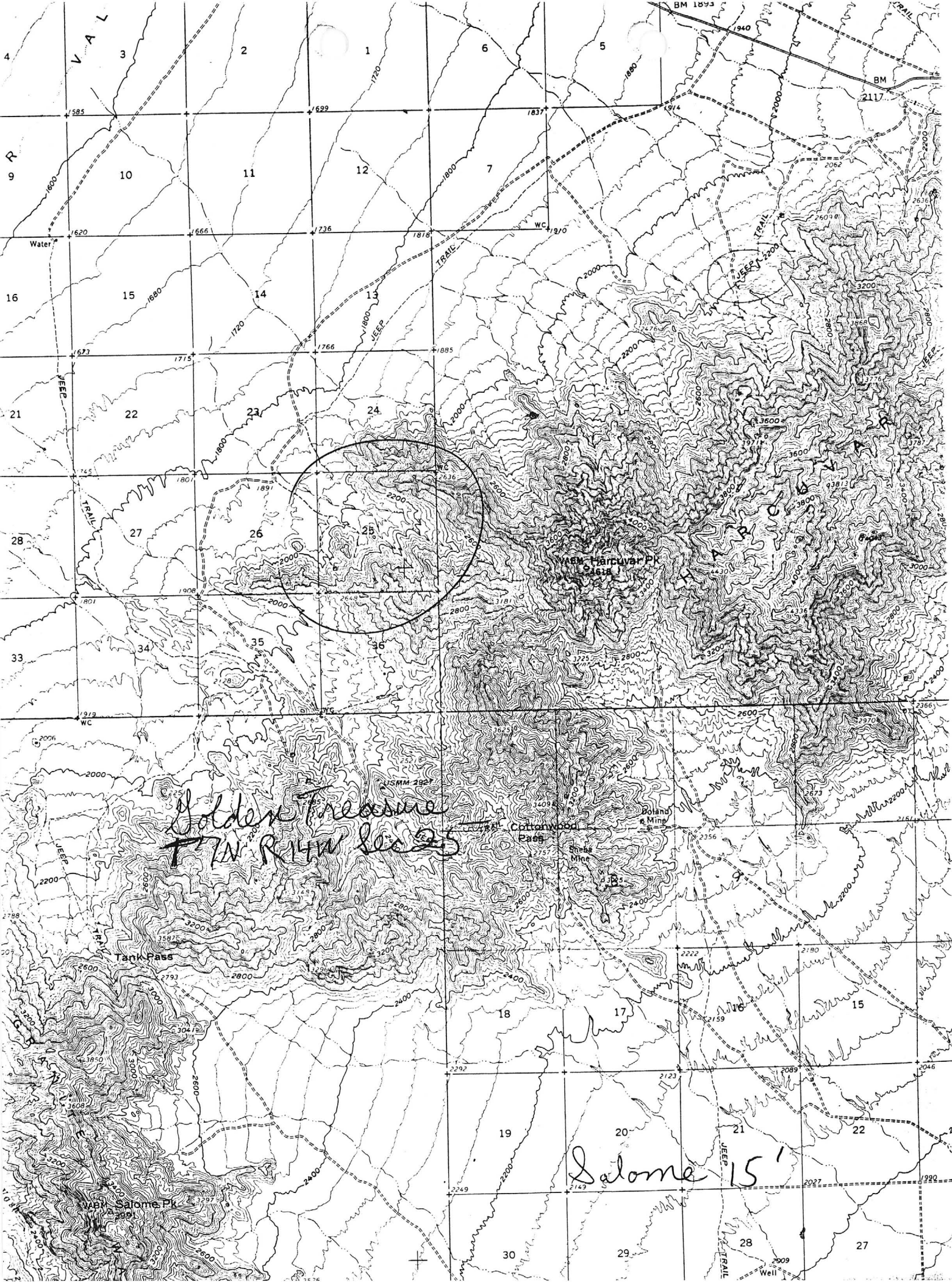
BIBLIOGRAPHY:

ADMMR GOLDEN TREASURE FILE



Golden Treasure
T7N R14W Sec 25

Salome 15'

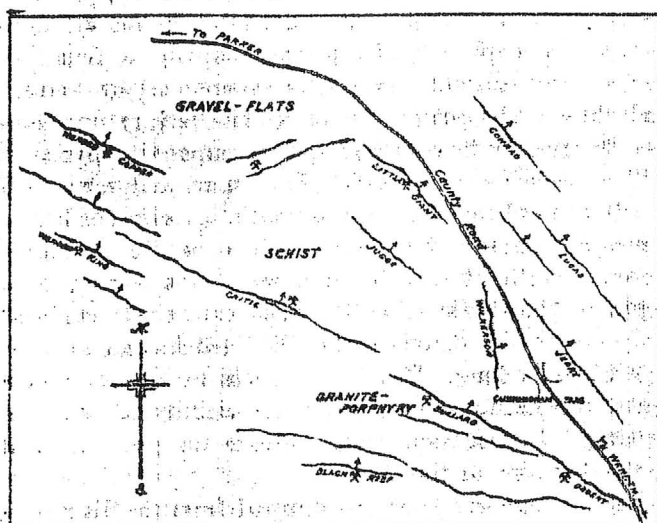


Cunningham Pass District, Arizona

By W. TOVOTE

The Cunningham pass country, in northern Yuma county, Arizona, recently has been attracting considerable attention. This is less because of the amount of ore being mined than for the fact that the ore is high-grade and of excellent character for smelting. Three mines are now producing steadily, others are in process of development, and small shipments are being made by lessees from undeveloped properties. The district is about 10 miles north of Wenden on the Arizona & California

care to operate it, while prospective buyers were reluctant to meet his price and terms. The mine has been worked intermittently since by lessees. The Critic is a shaft-mine. It was opened to the 400-ft. level and partly stoped, some good orebodies being overlooked. Lessees have operated it since with indifferent success, until J. Nohlecheck, about two years ago, opened several good ore-shoots, increasing the reserves steadily, while making regular shipments.

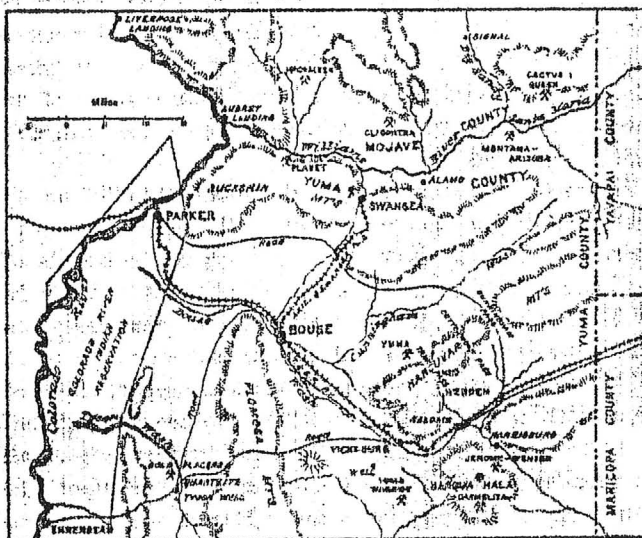


SKETCH SHOWING PART OF VEIN-SYSTEM NEAR CUNNINGHAM PASS

branch of the Santa Fe system. It is part of the Ellsworth mining district.

Cunningham pass is a low saddle in the Harcuvar mountains. The main traveled road from points in central Arizona to Parker used to lead through this pass, but in recent years a new highway has been constructed along the railroad, which now takes most of the through-traffic. The country is a typical semi-desert. Water is scarce and wells supply most of the drinking water. Small towns and settlements have grown wherever water has been found in sufficient quantity. Vegetation is scanty, the mesquite and palo verde being the principal shrubs, and some ironwood is found along the arroyos.

Mining near Cunningham pass dates back at least 20 years. The Critic and the Bullard mines were started on rich surface-ores, and both produced for awhile. The Critic is credited with an output of \$500,000 and the Bullard with \$150,000. The Bullard was opened by four short tunnels, the longest being 320 ft., with a maximum depth of about 225 ft. vertically. Ore was also developed in two shafts. The ore-shoot in the tunnels was partly



SKETCH OF THE PARKER CUT-OFF DISTRICT IN YUMA COUNTY

Two years ago H. Barkdoll, superintendent of the Old Dominion Copper Mining & Smelting Co., at Globe, and his associates, acquired the Wenden Copper mine, sank a shaft 200 ft. deep, shipped ore and then closed. Adjoining the Wenden are the Conrad claims, which were purchased by El Paso people who organized the Wenden King Mining Co. Considerable money was expended without much to show for the expenditure, and the enterprise came to grief. Activity lagged again, until recently a rather remarkable showing was made, in the Little Giant mine. Here two lessees had stoped out a small surface-shoot of high-grade copper ore, ranging from 2 to 15 in. wide. At 25 ft. this gave out, but the new owners acquired a lease and option and continued sinking. At 75 ft. the vein suddenly widened to about two feet, and was followed for about 70 ft., yielding ore assaying from 15 to 20% copper. Sinking was resumed and the ore improved in value. A new level at 125 ft., driven for over 100 ft., revealed excellent ore, in some places being 40 in. wide. About 200 tons of ore was shipped from development work alone, which returned

Sec 25, T7N, R14W

GOLDEN TREASURE MINES

YUMA COUNTY
ELLSWORTH DIST.

See: CRITIC MINE (RFC file)

Golden Treasure Mine

Salome 15' (sec. 25, T. 7N., R. 14W)

Yuma County

reference: Arizona Dept. of Mineral Resources,
Golden Treasure Yuma County (file)

1933 — the title to the properties was
clear and free

consists of 8 full sized mining claims
of about 160 acres

geology:

volcanic rocks; gold in veins and
lenses; assays from a few dollars to
\$50 per ton (average of \$10 per ton); total
of around \$300,000 gross.

Golden Treasure Mines

12 miles E. of Salome sec. 25, T. 1 N. R. 14 W. S.
Yuma County

reference: Arizona Dept. of Mineral Resources
Golden Treasure (file)

present owner:

minerals: gold

history of the area:

In 1933 A. W. Bramwell, a mining engineer, wrote a report on the property. He estimated at least 30,000 tons of gold ore averaging \$10 per ton. He concluded that the property has very good possibilities. Some tunnel, drift, and surface work was done on the property.

geology:

Country rock is Precambrian granite-gneiss; there are diabase, aplite, and amphibolite dikes

property consists of 8 full-sized mining claims

REPORT ON THE GOLDEN TREASURE
Gold Mines.

At the Mine,
January 2, 1933.

PROPERTY LOCATION: The Golden Treasure Mines comprise a holding of eight (8) full sized mining claims of approximately 160 acres in extent.

These properties are located in the Ellsworth mining district near Cunningham Pass in the Harcuvar range of mountains, and is about seven miles north westerly direction from the town of Wenden which is on the Santa Fe railroad that connects Phoenix, Arizona with the Pacific coast. A newly built county road runs from Wenden to a point near these properties. This road involves a raise of 400 feet over the Pass going to Wenden and a gradual rise of 700 feet in returning Salome, another town which is approximately seven miles in a southerly direction together with Wenden are the two shipping points for all the properties in the Ellsworth and Harqua Hala mining districts.

The title to these properties is clear and free from any incumbrances and will be found on record in the County Recorder's office, at Yuma, Arizona.

GEOLOGY OF THE PROPERTY: The rocks that make up the formation of this property are volcanic and have been subjected to secondary action.

The ore deposition is in a pressure zone and considerably metamorphic and shearing action has taken place. The country rock is a pre-Cambrian granite gneiss, which was originally a mica-orthoclase granite. Associated with the gneiss formation and are the result of the shearing action, which occurred before and during the intrusion of the diabase dikes, that are found at intervals in the Golden Treasure formation. Associated with the schists also are small dikes of aplite and amphibolite.

Innumerable stringers of hematite are present in the structure filling small fissures and fractures which in turn denote the presence invariably of a lenticular mass of ore of one grade or another.

The later intrusives are the diabase dikes, which cut the gneiss and schistose, these rocks prior to or at the time of this metamorphism, were intruded into the groundmass and are no doubt responsible for the mineralization for which this intrusive, the ore depositions of the property occur.

MINERALIZATION & ORE DEPOSITION: In commenting on the origin of the ore deposition found on these properties it is very evident that the solutions accompanying the intrusion of the diabase and other intrusions into the gneiss are responsible for the numerous lenses of good gold ores found throughout the property.

The veins in general occupy the lamination planes of the schists and occur in several instances along the contact of the diabase and aplite dikes.

The vein filling is composed of quartz with talc and iron oxide scattered throughout. On the Golden Star claim a splendid example of a true fissure vein will be found. This vein strikes northwesterly and southeasterly and although nearly vertical dips a trifle east. This vein at present shown only one wall which is well defined and is the hanging wall. From 4 to 5 feet of good free gold ore is visible and the vertical continuity at this point has been proven by a shaft operation to a depth of 100 feet with a horizontal continuity of approximately 1000 feet which is plainly visible on the surface.

There are two kinds of deposits on this property; those along the diabase

and aplite contacts, which are lenticular bodies, and those in the gneiss. The latter type is represented by a number of quartz veins which are more or less general in occurrence and which carry gold in appreciable quantities. These quartz veins without question represent an epoch of vein formation earlier than the lenticular bodies found in the formation heretofore described.

The gold in the veins and lenses of this property has been driven in part by the oxidation of pyrite. In some sections of the ores free gold is seen in liberal quantities while in others it is rather sparingly distributed. The iron oxide and carbonate present quite frequently forms an effective covering for the gold, so panning in most instances must be resorted to to disturb the coating and thereby expose the gold content of the ores.

The veins encountered on this property no doubt were formed after the Mesozoic intrusions of the large granite mass that makes up the batholithic structure of this region and which is in the neighborhood of Salome Peak.

DEVELOPMENT ETC: An important working will be found on the Golden Treasure claim. This is a shaft operation 100-ft deep which is connected by a tunnel 180-ft in length. This shaft has been sunk on a true fissure vein and much valuable ore has been developed and mined. The ores extracted from these workings were shipped by previous owners or were milled on the ground by a small mill that was installed near the shaft workings.

Another operation of importance is a drift 220-ft in length at the mill-site on the Golden Star claim. On this claim will be found a drift approximately 45-ft in length with a winze 35-ft deep. From this winze 100 tons of gold ore averaging \$50 per ton has been milled recently. At the end of the winze is a splendid showing of good commercial ore that will average \$26 gold values per ton. From the drift 45-ft long two tons of ore were shipped that averaged \$84 gold per ton and three tons that averaged \$135 per ton.

On the Red Bird two shafts each approximately 25-ft deep have been sunk together with some drifting and stoping that was done on the ore body. There are two other shafts on this property, one 30-ft deep and one 20-ft deep. The latter is used as a well which up to date has furnished ample water for mining, milling and domestic purposes.

There are ten other surface workings on this property all of which show exposures of ore of a good grade.

The following is a total of the development work up to date: Sinking, 255-ft; Tunnels and drifts 225-ft; Surface workings 350-ft, making a total of 810-ft of work done on the property at a cost of \$8700.00.

The property is well equipped for the present development and such equipment is in good condition. There is a Gibson mill of late type, also a small cyanide plant of 5 tons capacity. This plant is very complete and cost approximately \$5000 to purchase and install. There is a cemented water tank which holds approximately 1000 gallons of water which is used when the mill is in operation. This tank is in good condition and ready for immediate service.

There is other sundry equipment scattered over the property and in all the property can be classed as one equipped for operation on a normal scale.

CONCLUSION AND REMARKS: The facts contained in this report together with the description of the geology and mineralization as it occurs on this property have been prepared and written up on the ground, after careful and intelligent observations.

The exploration work that has been done up to date has completed the pioneering of this property and it has established many matters of importance. It has proved beyond question that this property has the ear marks of a mine and demonstrates that the vein system has vertical as well as horizontal continuity.

Regarding the lenticular ore depositions found on this property, a demonstration of this occurrence may be made as follows: take a book that is not too thick and press the sides with your hands. You will notice when you exert the pressure that the leaves will expand and make openings (lenses) just as they have occurred in this pressure zone of this property.

Ore lenses are large and small according to the pressure and material that makes up the pressure zone. They are thin on the edges and invariably open up to sizeable ore bodies in a few feet. Evidence of this seen and has been proven by the Golden Star drift described in this report.

The shaft operations on the Golden Treasure claim have proved that considerable tonnage of gold ore is available at that point for assuming that the vein is five feet wide which is very conservative, considering the fact that only the hanging wall is visible. The horizontal and vertical continuity of this vein which is described in this report would measure up to at least 30,000 tons. Assays of the ores taken from time to time which were extracted from these workings have run from a few dollars to \$50 per ton. So to be conservative we will strike an average of \$10 per ton of this proven ore body which will make its total value around \$300,000 gross.

There are other proven ore bodies on these properties any of which can be worked if so desired but for a major operation I would advise that a station be cut at the 100-ft level and that drifts be put on the vein until your drifting operations will allow you to stope out the ore bodies you will develop. The cost of this operation under the existing conditions together with some new equipment necessary should not exceed \$5000, an outlay for which you should be well rewarded for. Before or by the time that amount has been spent on the development outlined your property will be self supporting and of a profitable nature.

The fact that the ore bodies of this property are numerous and carry gold values in commercial quantity is the guarantee that your efforts will meet with success. This property has many advantages. There is an abundance of good water. You are close to railroad transportation. The climatic conditions are excellent. The ores are economically mined. Labor is cheap and supplies can be obtained at Wenden at Los Angeles Prices with freight added.

And in conclusion I will state that during my thirty years of active field work in the interest of mining I fail to recall an instance where I have seen a property with better possibilities than these properties present. This together with the fact that you have neighbors such well known mines as the Harquahala, Bonanza, Socorro, San Marcos and others of the district which have produced millions in gold bullion, compels me to come to the conclusion/ one after reviewing the facts that I have written in this report, that when the suggestions I have outlined are under way no doubt exists in my mind that your property will render a good account of itself as a profitable producer.

(Signed) A.W. Bramwell, E.M.
January 2, 1933.

(Note: This copy is made from another copy which very clearly was not made carefully since there are some words left out and the sentences do not read clearly) A.L.F.