



CONTACT INFORMATION

Mining Records Curator
Arizona Geological Survey
1520 West Adams St.
Phoenix, AZ 85007
602-771-1601
<http://www.azgs.az.gov>
inquiries@azgs.az.gov

The following file is part of the

Arizona Department of Mines and Mineral Resources Mining Collection

ACCESS STATEMENT

These digitized collections are accessible for purposes of education and research. We have indicated what we know about copyright and rights of privacy, publicity, or trademark. Due to the nature of archival collections, we are not always able to identify this information. We are eager to hear from any rights owners, so that we may obtain accurate information. Upon request, we will remove material from public view while we address a rights issue.

CONSTRAINTS STATEMENT

The Arizona Geological Survey does not claim to control all rights for all materials in its collection. These rights include, but are not limited to: copyright, privacy rights, and cultural protection rights. The User hereby assumes all responsibility for obtaining any rights to use the material in excess of "fair use."

The Survey makes no intellectual property claims to the products created by individual authors in the manuscript collections, except when the author deeded those rights to the Survey or when those authors were employed by the State of Arizona and created intellectual products as a function of their official duties. The Survey does maintain property rights to the physical and digital representations of the works.

QUALITY STATEMENT

The Arizona Geological Survey is not responsible for the accuracy of the records, information, or opinions that may be contained in the files. The Survey collects, catalogs, and archives data on mineral properties regardless of its views of the veracity or accuracy of those data.

PRINTED: 07/31/2001

ARIZONA DEPARTMENT OF MINES AND MINERAL RESOURCES AZMILS DATA

PRIMARY NAME: GOLDEN STAR GROUP

ALTERNATE NAMES:

DENVER CITY GROUP
WEST POINT
AMERICAN BOY
RED BLUFF

MOHAVE COUNTY MILS NUMBER: 61B

LOCATION: TOWNSHIP 20 N RANGE 21 W SECTION 13 QUARTER SW
LATITUDE: N 35DEG 06MIN 48SEC LONGITUDE: W 114DEG 28MIN 09SEC
TOPO MAP NAME: OATMAN - 7.5 MIN

CURRENT STATUS: UNKNOWN

COMMODITY:

GOLD LODE

BIBLIOGRAPHY:

ADMMR GOLDEN STAR GROUP FILE
ADMMR MOHAVE CUSTOM MILL PROJECT
SCHRADER, F.C. "MIN. DPSTS OF CRBT RNGE, BLCK
MTNS, GRND WSH CLFS,AZ" USGS BULL 340, P 78
SCHRADER, F.C. "MIN. DPSTS OF CRBT RNGE, BLCK
MTN, GRND WSH CLFS,AZ" USGS BUL 397, P 173-5

10/11/85

ARIZONA DEPARTMENT OF MINES AND MINERAL RESOURCES FILE DATA

PRIMARY NAME: GOLDEN STAR GROUP

ALTERNATE NAMES:

DENVER CITY GROUP
WEST POINT
AMERICAN BOY
RED BLUFF

MOHAVE COUNTY MILS NUMBER: 61B

LOCATION: TOWNSHIP 20 N RANGE 21 W SECTION 13 QTR. SW
LATITUDE: N 35DEG 06MIN 48SEC LONGITUDE: W 108DEG 28MIN 09SEC
TOPO MAP NAME: OATMAN - 7.5 MIN

CURRENT STATUS: UNKNOWN

COMMODITY:

GOLD-(M) LODE-PRIMARY

BIBLIOGRAPHY:

USGS OATMAN QUAD
ADMR HOUSEHOLDER MAP
ADMR MOHAVE CARD FILE
SCHRADER, F.C., USGS BULL 397, P. 173-175
ADMR MOHAVE CUSTOME MILL PROJ. CARD FILE
SCHRADER, F.C. USGS BULL 340, P. 78
ADMMR FILE

T. 20 N.

1 510 000

FEET

3892

3891

3890

3890000 N.

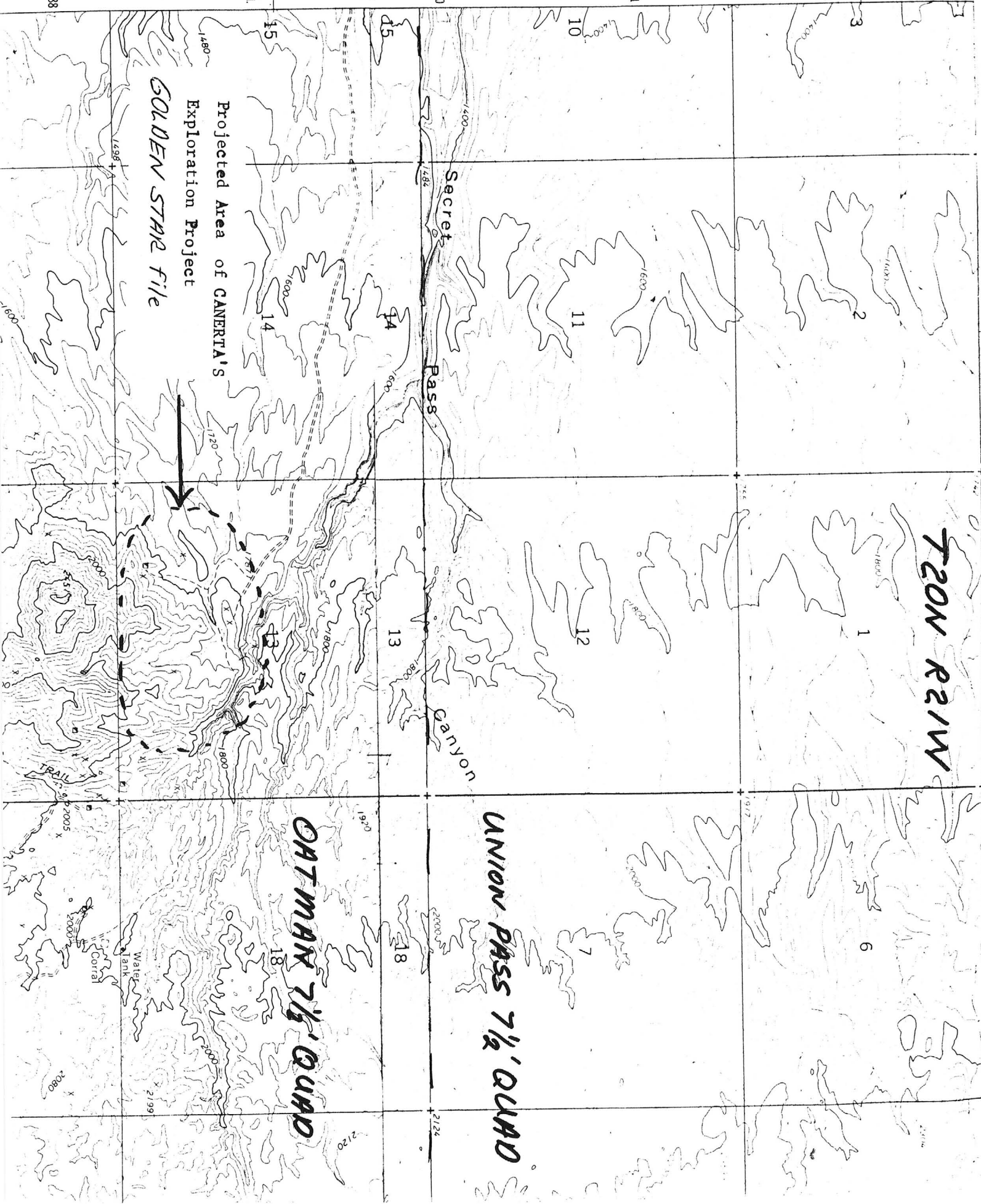
3888

720N R21W

UNION PASS 7 1/2' QUAD

CHATMAN 7 1/2' QUAD

Projected Area of CANERTA'S
Exploration Project
GOLDEN STAR file



GOLDEN STAR GROUP

MOHAVE COUNTY

KAP WR 11/16/84: Michael D. Russ, Consulting Geologist, 579 Wright Street #205, Lakewood, Colorado 80228, phone (303) 987-3584 reported he has been working for Canerta Resources Limited on an exploration project they refer to as the Oatman Prospect about 5 miles east of Bullhead City in Secret Pass Canyon. A Separate Verbal Information Summary form has been completed for a new file to be known as Golden Star which corresponds to Mohave MILS 61B. This old property area is the best projection of the area of the project with the available data.

R/H

NAME: ^{Handwritten: Golden Star} GOLDEN STAR ^{Sec. 163-37, p 173-174}

COUNTY: MOHAVE

OATMAN 7 1/2'

T 20 N

R 21 W

SEC. 13 1/2 E1 ✓

DISTRICT: SAN FRANCISCO

Mineralization: Au

Geology:

Type Operation:

Production:

References: ASMA Clipping #4

Mohave County Card File

Arizona Department of Mines and Mineral Resources

VERBAL INFORMATION SUMMARY

May be Reproduced

1. Information from: Micheal D. Russ Consulting Geologist
Address: 579 Wright St., #205, Lakewood, Colorado 80228, Ph: 303-987-3584
2. Mine: Golden Star (Mohave MILS #61B) 3. ADMMR Mine File Golden Star
4. County: Mohave 5. District Union Pass
6. Township 20N Range 21W Sec(s) 13
7. Location: 5 miles from Bullhead City in Secret Pass Canyon
8. No. of Claims - Patented _____ Unpatented _____
9. Owner (if different from above) Canerta Resources Limited
10. Address: 155 Oakside Place SW, Calgary, Alberta T2V 4R1
11. Operating Company: _____
12. Pertinent People and/or Firm: Peter G. Cooper, Canerta (Canada Alberta Mining)
13. Commodities: Gold
14. Operational Status: Exploration target - sampling project.
15. Summary of information received, comments, etc.

Under the direction of Micheal Russ, Canerta has completed geologic mapping, geochem sampling and trenching. The trenches were chip channel sampled.

Visable mineralization consits of tiny stringers of quartz in a volcanic pile.

Canerta is a privately held Canadian company. They refer to the exploration project as the Oatman Prospect.

Date:

Nov 14, 1984

(Signature)

Ken A. Phillips

ADMMR