



CONTACT INFORMATION

Mining Records Curator
Arizona Geological Survey
1520 West Adams St.
Phoenix, AZ 85007
602-771-1601
<http://www.azgs.az.gov>
inquiries@azgs.az.gov

The following file is part of the

Arizona Department of Mines and Mineral Resources Mining Collection

ACCESS STATEMENT

These digitized collections are accessible for purposes of education and research. We have indicated what we know about copyright and rights of privacy, publicity, or trademark. Due to the nature of archival collections, we are not always able to identify this information. We are eager to hear from any rights owners, so that we may obtain accurate information. Upon request, we will remove material from public view while we address a rights issue.

CONSTRAINTS STATEMENT

The Arizona Geological Survey does not claim to control all rights for all materials in its collection. These rights include, but are not limited to: copyright, privacy rights, and cultural protection rights. The User hereby assumes all responsibility for obtaining any rights to use the material in excess of "fair use."

The Survey makes no intellectual property claims to the products created by individual authors in the manuscript collections, except when the author deeded those rights to the Survey or when those authors were employed by the State of Arizona and created intellectual products as a function of their official duties. The Survey does maintain property rights to the physical and digital representations of the works.

QUALITY STATEMENT

The Arizona Geological Survey is not responsible for the accuracy of the records, information, or opinions that may be contained in the files. The Survey collects, catalogs, and archives data on mineral properties regardless of its views of the veracity or accuracy of those data.

PRINTED: 07/26/2001

ARIZONA DEPARTMENT OF MINES AND MINERAL RESOURCES AZMILS DATA

PRIMARY NAME: GOLDEN HORSESHOE

ALTERNATE NAMES:

COCHISE COUNTY MILS NUMBER: 735

LOCATION: TOWNSHIP 15 S RANGE 28 E SECTION 9 QUARTER NE
LATITUDE: N 32DEG 09MIN 06SEC LONGITUDE: W 109DEG 29MIN 11SEC
TOPO MAP NAME: BOWIE MTN NORTH - 7.5 MIN

CURRENT STATUS: PAST PRODUCER

COMMODITY:
GOLD LODE

BIBLIOGRAPHY:
ADMMR GOLDEN HORSESHOE FILE

12/18/86

ARIZONA DEPARTMENT OF MINES AND MINERAL RESOURCES FILE DATA

PRIMARY NAME: GOLDEN HORSESHOE

ALTERNATE NAMES:

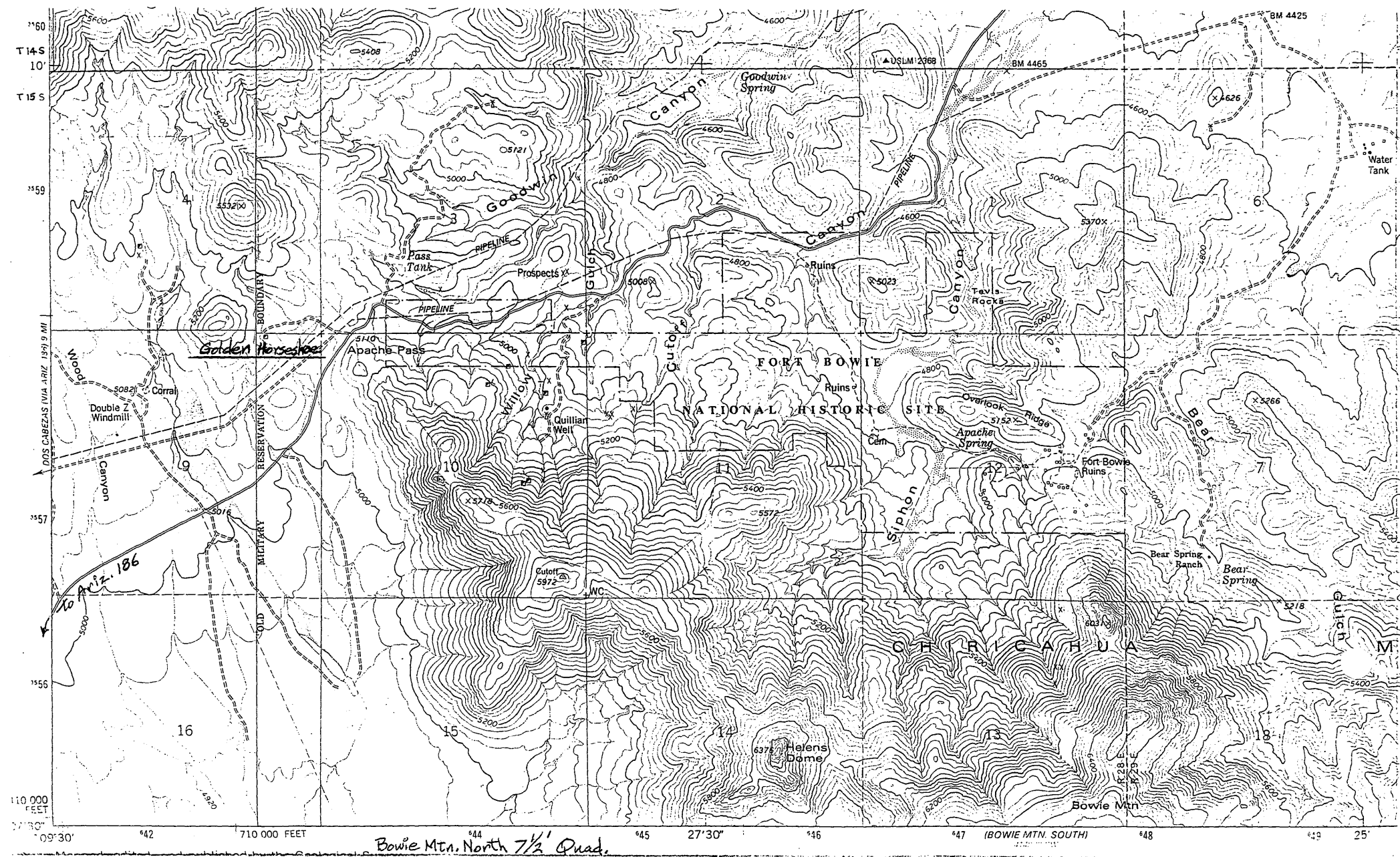
COCHISE COUNTY MILS NUMBER: 735

LOCATION: TOWNSHIP 15 S RANGE 28 E SECTION 9 QUARTER NE
LATITUDE: N DEG MIN SEC LONGITUDE: W DEG MIN SEC
TOPO MAP NAME: BOWIE MTN NORTH - 7.5 MIN

CURRENT STATUS: PAST PRODUCER

COMMODITY:
GOLD LODE

BIBLIOGRAPHY:
ADMMR GOLDEN HORSESHOE FILE



GOLDEN HORSESHOE MINE

COCHISE COUNTY

MG WR 9/30/83: Mr. Joe Cooke, P.O. Box 332, Bowie, AZ 85605, phone 847-2405, has the Golden Horseshoe Mine in Cochise County. This gold property is in Section 9 T15S R28E. Approximately 70 feet of a new inclined shaft has been sunk.

MG WR 11/15/85: The new inclined shaft at the Golden Horseshoe (Cochise Co) is 90 feet long; the bottom is 60 feet, vertically from the surface. A drift about 20 feet long has been driven off the bottom of the shaft and, during 1984 and 1985, the operators have done some underground core drilling. The older workings are inaccessible and I suggested several consultants that might be able to help the operators locate these workings. Mr. Tom Cooke of Bowie, phone 847-2283, is a partner to Joe Cooke.

MILS #735

ARIZONA DEPARTMENT OF MINERAL RESOURCES

Mineral Building, Fairgrounds

Phoenix, Arizona

1. Information from: Mr. Lyman Stokes
Address: ^{NC} c/o Joseph Cooke, Cooke Tillage, P.O. Box 332, Bowie, AZ 85605
2. Mine: ^{NC} GOLDEN HORSESHOE (Apache Pass?) 3. No. of Claims - Patented _____
(Cochise Co.) Unpatented _____
4. Location: County road from Az 186 approx. 6 miles to Apache Pass, take road west about 0.3 mile.
5. Sec NE $\frac{1}{4}$, 9 Tp 15S Range 28E 6. Mining District Dos Cabezas (?)
7. Owner: Riggs family
8. Address: Sunizona, AZ
9. Operating Co.: Joseph Cooke
10. Address: as above Phone: 847-2405
11. President: _____ 12. Gen. Mgr.: _____
13. Principal Metals: Au 14. No. Employed: _____
15. Mill, Type & Capacity: _____
16. Present Operations: (a) Down ☐ (b) Assessment work ☐ (c) Exploration ☒
(d) Production ☐ (e) Rate _____ tpd.
17. New Work Planned: The new inclined shaft is planned to intersect the old Blue Boy workings. The shaft is now 85 feet long and dips about 40° at the collar, steepening to 43°.
18. Misc. Notes: Mine is on homestead that carries mineral rights. The vertical Blue Boy shaft and its workings were operated by a Mr. Cliff Updike (deceased) in the 1920's. Apparently there was some gold production from a quartz vein in this mine.
In the 1950's or 1960's Updike's nephew reportedly sank the Dutch Boy shaft to the west of the Blue Boy. Apparently there was no production from the Dutch Boy.

Date: October 9, 1983

(Signature)

Michael W. Greeley
(Field Engineer)