



CONTACT INFORMATION

Mining Records Curator
Arizona Geological Survey
1520 West Adams St.
Phoenix, AZ 85007
602-771-1601
<http://www.azgs.az.gov>
inquiries@azgs.az.gov

The following file is part of the

Arizona Department of Mines and Mineral Resources Mining Collection

ACCESS STATEMENT

These digitized collections are accessible for purposes of education and research. We have indicated what we know about copyright and rights of privacy, publicity, or trademark. Due to the nature of archival collections, we are not always able to identify this information. We are eager to hear from any rights owners, so that we may obtain accurate information. Upon request, we will remove material from public view while we address a rights issue.

CONSTRAINTS STATEMENT

The Arizona Geological Survey does not claim to control all rights for all materials in its collection. These rights include, but are not limited to: copyright, privacy rights, and cultural protection rights. The User hereby assumes all responsibility for obtaining any rights to use the material in excess of "fair use."

The Survey makes no intellectual property claims to the products created by individual authors in the manuscript collections, except when the author deeded those rights to the Survey or when those authors were employed by the State of Arizona and created intellectual products as a function of their official duties. The Survey does maintain property rights to the physical and digital representations of the works.

QUALITY STATEMENT

The Arizona Geological Survey is not responsible for the accuracy of the records, information, or opinions that may be contained in the files. The Survey collects, catalogs, and archives data on mineral properties regardless of its views of the veracity or accuracy of those data.

05/09/89

ARIZONA DEPARTMENT OF MINES AND MINERAL RESOURCES FILE DATA

PRIMARY NAME: GOLD CHAIN

ALTERNATE NAMES:

RIVER RANGE
SHAW GROUP

MOHAVE COUNTY MILS NUMBER: 342C

LOCATION: TOWNSHIP 22 N RANGE 21 W SECTION 34 QUARTER --
LATITUDE: N 35DEG 14MIN 57SEC LONGITUDE: W 114DEG 30MIN 05SEC
TOPO MAP NAME: DAVIS DAM - 7.5 MIN

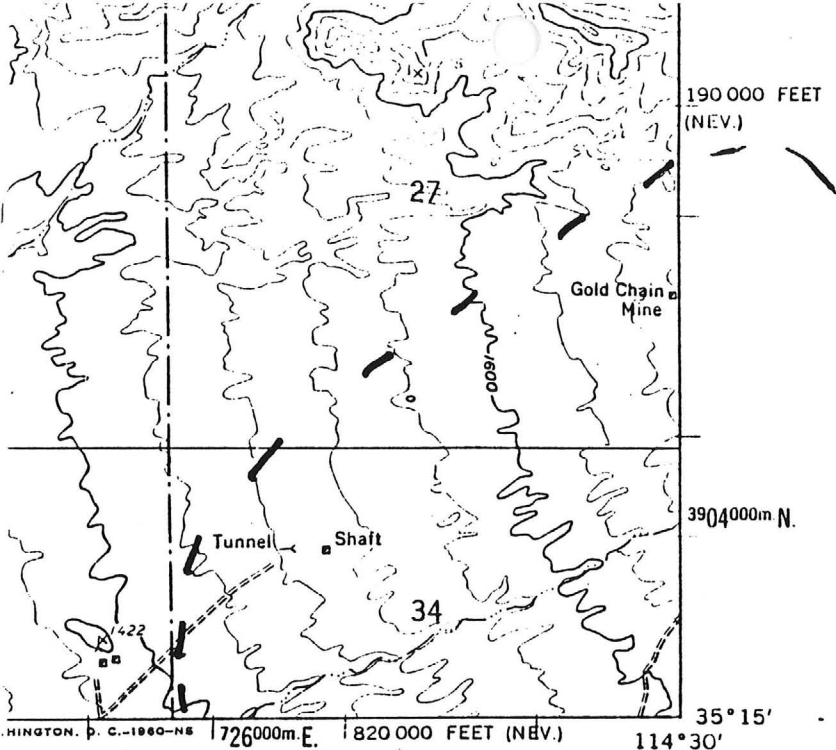
CURRENT STATUS: PAST PRODUCER

COMMODITY:

GOLD

BIBLIOGRAPHY:

ADMMR GOLD CHAIN FILE
LAUSEN, C. "GEOL. & ORE DPSTS OF OATMAN & KAT
HERINE DIST" AZBM BULL 131, P 21, 53; 1931
AZ. MNG JNL, DEC. 15, 1921, P. 9
RAND'S MINES HANDBOOK, P. 319; 1931
USBM IC 6901, P. 8 (MAP), 51
GEO FILE - GREAT BASIN GEM JOINT VENTURE VOL5
AZBM BULL 137, P. 108



GOLD
CHAIN

ROAD CLASSIFICATION

Unimproved dirt =====

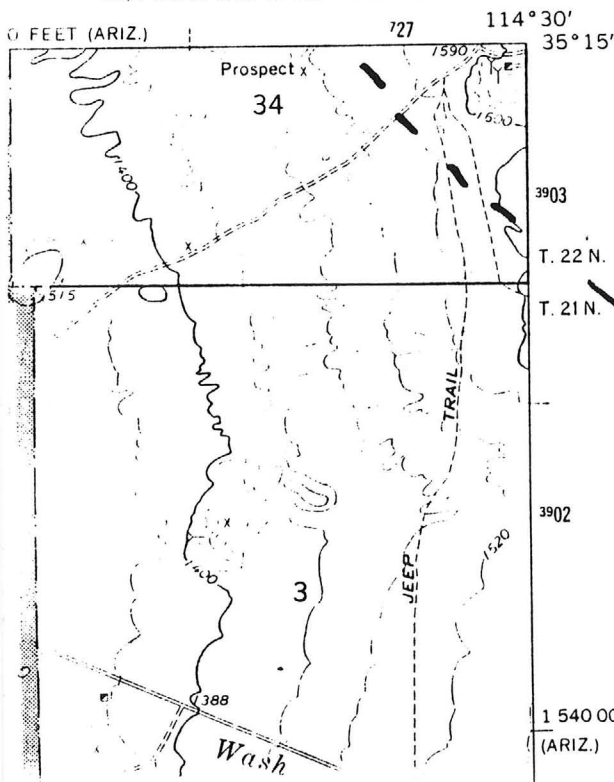
41-C

SPRIT MTN. SE, ARIZ.-NEV.
SE/4 SPIRIT MTN. 15' QUADRANGLE
N3515-W11430/7.5

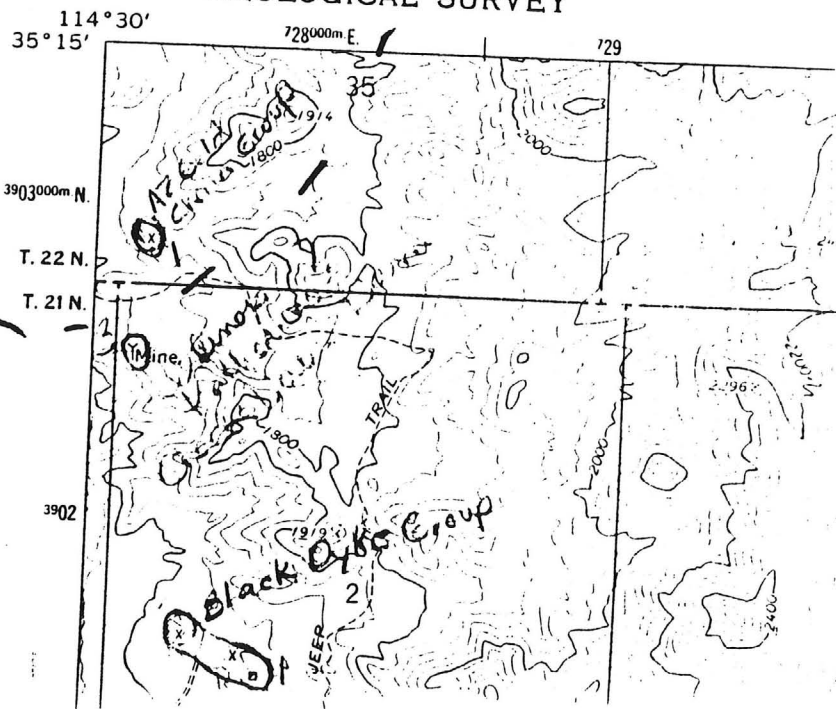
MO



DAVIS DAM QUADRANGLE
ARIZONA-NEVADA
15 MINUTE SERIES (TOPOGRAPHIC)
NE/4 DAVIS DAM 15' QUADRANGLE



UNION PASS 7.5
UNITED STATES
DEPARTMENT OF THE INTERIOR
GEOLOGICAL SURVEY



ARIZONA DEPARTMENT OF MINES AND MINERAL RESOURCES

VERBAL INFORMATION SUMMARY

1. Mine file: GOLD CHAIN
2. Mine name if different from above:
3. County: Mohave
4. Information from: Bill Vanderwall
Company: Ivy Minerals (c)
Address: P.O. Box 2532
Boise, ID 83701
Phone: 503-473-2588 (Jack Walker)
5. Summary of information received, comments, etc.:

Mr. Vanderwall reports that drilling of the Gold Chain property by Anaconda Mining in the early 1980's identified a resource of 50,000 ounces of gold. Ivy Minerals controls most of this area as part of their Roadside property. They are currently seeking a joint venture partner to continue exploration on the property.

Date: February 9, 1989

Nyal J. Niemuth, Mining Engineer

Voluminous report available for inspection

More information on the Gold Chain, Roadside, and Black Dyke properties, Mohave Co. is available for your review.. Data (total of about 7 inches thick) of geochemical and drill lithologic and assay data plus interpretation is available in ~~staff member Nyal Niemuth's office~~. The data is compiled from work by American Copper and Nickel and Ivy Minerals and other company efforts. As this material is unbound it has not yet been placed in the file collection. Sorry for the inconvenience. 10-91-NJN

↓
THE ROADSIDE FILE.

NJN 2006

Name of Mine or Prospect: Gold Chain Mine ³	Township 22N	Range 21W	Section 27 daa	Priority B
Principal Minerals: Gold	1:250,000 Quad Kingman	7.5' - 15' Quad Spirit Mtn. S.E.		
Associated Minerals: Quartz, Calcite	District Union Pass (Katherine, San Francisco)	Principal Product Gold		
Type of Operation: Underground: shafts, tunnels	County Mohave	State Ar	Type of Deposit Vein	
Ownership or Controlling Interest: Consult current USBLM mining claim records.				
Access: From the intersection of U.S. 93 and Cottonwood Road proceed west on Cottonwood Road for 9 miles turn left on unimproved road for 1.25 miles. Turn right and travel west for 1 mile to mine. Mine is shown on topographic quadrangle.				
Structural Control or Geological Association: "The Gold Chain is about 3 miles from Katherine (mine) and is similar to the Arabian. The mine is reported to be over 100 feet wide and to run \$3.00 per ton." ²				
Age of Mineralization:				
Production History		Geochemical Analyses		
References				
1) CETA map file, Rack # 2) Gardner (1936) p. 51. 3) Lausen (1931, p. 21) shows the "Gold Chain Mine" in a different location, T22N-R21W, Section 34da				

GOLD CHAIN

MOHAVE COUNTY

NJN WR 3/13/87: Bill Vanderwall (c) reported that Ivy Minerals (c) is picking up the Roadside (file) and the Gold Chain, Mohave County from Ernie Holinstein. They plan an air track drilling exploration program to try to prove a small reserve there.

NJN WR 6/17/88: Bill Vanderwall (card) reported that at the end of the 70's Anaconda drilled four widely spaced holes and Fischer Watt drilled two holes in a property position covering the Gold Chain (file) Mohave County, Sec 27 thru 34 SE. Ivy Minerals hopes to chase the old, drilled hot spots with fill-in drilling, plus drill in the shaft area in the SE of 34. This fall it is planned to drill these north dipping granites.
