



CONTACT INFORMATION

Mining Records Curator
Arizona Geological Survey
1520 West Adams St.
Phoenix, AZ 85007
602-771-1601
<http://www.azgs.az.gov>
inquiries@azgs.az.gov

The following file is part of the

Arizona Department of Mines and Mineral Resources Mining Collection

ACCESS STATEMENT

These digitized collections are accessible for purposes of education and research. We have indicated what we know about copyright and rights of privacy, publicity, or trademark. Due to the nature of archival collections, we are not always able to identify this information. We are eager to hear from any rights owners, so that we may obtain accurate information. Upon request, we will remove material from public view while we address a rights issue.

CONSTRAINTS STATEMENT

The Arizona Geological Survey does not claim to control all rights for all materials in its collection. These rights include, but are not limited to: copyright, privacy rights, and cultural protection rights. The User hereby assumes all responsibility for obtaining any rights to use the material in excess of "fair use."

The Survey makes no intellectual property claims to the products created by individual authors in the manuscript collections, except when the author deeded those rights to the Survey or when those authors were employed by the State of Arizona and created intellectual products as a function of their official duties. The Survey does maintain property rights to the physical and digital representations of the works.

QUALITY STATEMENT

The Arizona Geological Survey is not responsible for the accuracy of the records, information, or opinions that may be contained in the files. The Survey collects, catalogs, and archives data on mineral properties regardless of its views of the veracity or accuracy of those data.

PRINTED: 03/05/2003

ARIZONA DEPARTMENT OF MINES AND MINERAL RESOURCES AZMILS DATA

PRIMARY NAME: GLANCE COPPER

ALTERNATE NAMES:

CALUMET PINAL MNG. CO. PROP.
TORTOLITA MNG. CO. PROP.

PINAL COUNTY MILS NUMBER: 616C

LOCATION: TOWNSHIP 9 S RANGE 12 E SECTION 5 QUARTER SW
LATITUDE: N 32DEG 35MIN 26SEC LONGITUDE: W 111DEG 07MIN 54SEC
TOPO MAP NAME: TORTOLITA MTS - 15 MIN

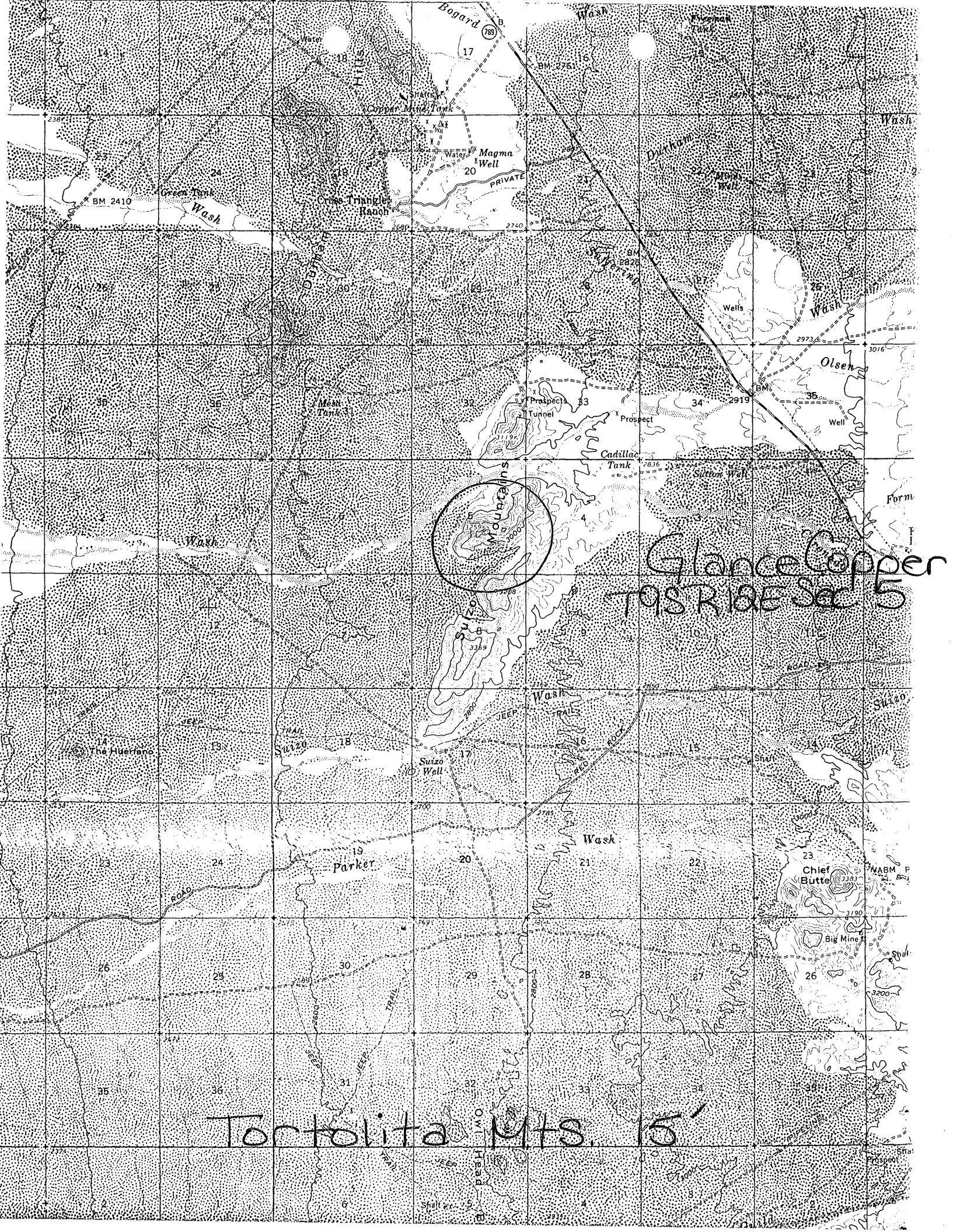
CURRENT STATUS: DEVEL DEPOSIT

COMMODITY:

COPPER OXIDE
SILVER
GOLD

BIBLIOGRAPHY:

BARTER, CHARLES F., GEOLOGY OF THE OWL HEAD
MINING DISTRICT PINAL CO., AZ. MS UOFA 1962
ADMMR GLANCE COPPER FILE



Glance Copper
T9S R10E Sec 5

Tortolita Mts. 15'

June 27, 1944

(E) Neither shipments of record nor extent of recent sampling indicate any appreciable volume of commercial ore. Furthermore, historical fact as reported is in no way ample upon which to base anticipation of production or even to substantiate any great degree of optimism.

(F) While the applicants appear wholly reliable as to intent and capacity to perform, it is not considered that there is sufficient evidence of worth of the property itself to justify recommendation of this loan.

ARIZONA DEPARTMENT OF MINERAL RESOURCES

Earl F. Hastings
Projects Engineer

DEPARTMENT OF MINERAL RESOURCES
STATE OF ARIZONA
FIELD ENGINEERS REPORT

Original

Mine GLANCE COPPER Date June 12, 1944
District Owl Head, Pinal County - ~~105-10E~~ Engineer George A. Ballam
Subject: Mine Examination 9512E SELTS

This property, consisting of two unpatented claims, is situated in Owl Head district of Pinal County, immediately adjacent on the north to Owl Head Butte, 5 miles west of Highway 80 on the Red Rock road and 16 miles easterly from Red Rock and the main line of the Southern Pacific Railroad. It is held by location by J. F. Dietrich, Richard Waer and E. C. Widby, Box 1375, Tucson.

Mineralization occurs along a fault fissure in the andesite and schist of the district. The strike, northwest to southeast, shows a shear zone some 6 - 8 feet in width where the andesite has been crushed and brecciated, and in which has been deposited copper and silver minerals, chiefly as chrysocolla and carbonates with major silver values in the footwall.

It is reported that operations were commenced in the eighties, surface mining being carried on along the outcrop. About 1911, the Calumet Pinal Mining Company and Tortolita Mining Company were reported to have carried on an extensive operation. A three hundred foot shaft was sunk on ore at about 55° southwest with drifts on the 200 and 300 foot levels. Primary sulfides commenced to come in on the 200 foot level where a drift was carried about 200 feet to the southeast toward the Owl Head Butte. Sulfides increased to some extent with depth, although the bottom of the shaft is still in the oxidized zone, no water being encountered. It is not known how extensively the mine was developed on the 300 foot level.

During this period high grade copper ore carrying 200 ozs. and over of silver was reported shipped by wagon road to the Sasco smelter at Red Rock but no record of these shipments is available. About this time a small shipment of ore of similar grade was made to the A.S. & R. Co. smelter at El Paso. A copy of this settlement is available and was examined.

Following a dispute in the management of the company, the shaft was burned out, allowing about 200 tons of muck and rock to fall in the shaft. No further work was reported done until about 1937 when one of the present owners, J. F. Dietrich, following a conversation with one Gil, a former superintendent, now deceased, shipped two cars of ore from the dump, reported to have been discarded from ore shipped from the 200 foot level. One car, shipped to El Paso, ran Au 0.025 ozs., Ag 10.2 ozs., Cu 3.79%; the other, which went to Hayden, ran Au 0.02 ozs., Ag 6.72 ozs., Cu 3.41%. A considerable quantity of this type of ore remains in the dump.

Mr. Dietrich subsequently attempted to reopen the shaft. By spiling he removed the fill to a depth of about 80 feet where he began to encounter partially burned timber. He ran out of funds before he was able to complete removal of muck. From the volume of caved material it is believed that the plug does not extend much below the 100 foot level, probably down to unburned timbering.

June 12, 1944

At present, the above named operators are again attempting to reopen these workings which had been partially filled again. The mine is now accessible to a depth of about 65 feet. Ore is showing in the walls. A sample cut in the footwall ran 32 ozs. Ag. and over 7% Cu.

Mr. Dietrich desires to reopen the mine. His conversation with the former operator, Gil, and with others who were familiar with the old operation, convinced him that a large body of ore exists in the 200 foot drift, continuing down to the lowest workings. He is an experienced miner and estimates that he can rehabilitate the shaft, retimber the drift where necessary, and be ready to take out ore in 60 days with investment of less than \$5,000, distributed as follows:

Spiling 60 ft. @ \$25	\$1,500
Retimbering shaft where necessary	1,000
Cleaning out and retimbering drifts	1,000
Pick up truck	800
Miscellaneous	<u>500</u>
	\$4,800

It is not anticipated that workings below obstruction in shaft are in bad condition. This ground stands well and workings are presumed to be completely dry as formerly.

This type of ore is acceptable at either Hayden or El Paso smelters of A.S. & R. Co. or the International smelter at Miami.

Dietrich is an experienced miner, elderly, but fully capable of directing an operation and his associates are young and energetic and able to accomplish the work with the aid of two additional men now available.