



CONTACT INFORMATION

Mining Records Curator
Arizona Geological Survey
1520 West Adams St.
Phoenix, AZ 85007
602-771-1601
<http://www.azgs.az.gov>
inquiries@azgs.az.gov

The following file is part of the

Arizona Department of Mines and Mineral Resources Mining Collection

ACCESS STATEMENT

These digitized collections are accessible for purposes of education and research. We have indicated what we know about copyright and rights of privacy, publicity, or trademark. Due to the nature of archival collections, we are not always able to identify this information. We are eager to hear from any rights owners, so that we may obtain accurate information. Upon request, we will remove material from public view while we address a rights issue.

CONSTRAINTS STATEMENT

The Arizona Geological Survey does not claim to control all rights for all materials in its collection. These rights include, but are not limited to: copyright, privacy rights, and cultural protection rights. The User hereby assumes all responsibility for obtaining any rights to use the material in excess of "fair use."

The Survey makes no intellectual property claims to the products created by individual authors in the manuscript collections, except when the author deeded those rights to the Survey or when those authors were employed by the State of Arizona and created intellectual products as a function of their official duties. The Survey does maintain property rights to the physical and digital representations of the works.

QUALITY STATEMENT

The Arizona Geological Survey is not responsible for the accuracy of the records, information, or opinions that may be contained in the files. The Survey collects, catalogs, and archives data on mineral properties regardless of its views of the veracity or accuracy of those data.

PRINTED: 03/05/2003

ARIZONA DEPARTMENT OF MINES AND MINERAL RESOURCES AZMILS DATA

PRIMARY NAME: GLADSTONE MCCABE

ALTERNATE NAMES:

MCCABE EXTENSION
PATENTED CLAIMS MS 1158-60
MCCABE GLADSTONE MINE

YAVAPAI COUNTY MILS NUMBER: 1001B

LOCATION: TOWNSHIP 13 N RANGE 1 E SECTION 30 QUARTER SE
LATITUDE: N 34DEG 28MIN 38SEC LONGITUDE: W 112DEG 17MIN 30SEC
TOPO MAP NAME: POLAND JUNCTION - 7.5 MIN

CURRENT STATUS: PAST PRODUCER

COMMODITY:

GOLD
SILVER
COPPER SULFIDE
LEAD SULFIDE
ARSENIC
SILICON
MANGANESE
SULFUR PYRITE

BIBLIOGRAPHY:

ADMMR GLADSTONE MCCABE FILE
YAVAPAI MAG., MAR 1918 P 4-6 SHARLOT HALL
BLM MINERAL SURVEY MS 1158, 1159, 1160
BLM MINING DISTRICT SHEET 19
ANDERSON, C.A. & S.C. CREASY "GEOL & ORE DPST
OF JEROME AREA" USGS PP 308 P 171; 1958
LINDGREN, W. "ORE DPSTS OF JEROME & BRADSHAW
MTS QUADS" USGS BULL 782, P 130-132; 1926
KISCHMANN, A.H. ET AL, "PRIN GOLD PROD DIST
OF US" USGS PP 610, P 46; 1968
ADMMR CALIFORNIA FILE (ADJACENT PROPERTY)
ADMMR STAN WEST CORP FILE P 16,21 REGIS. STMT
AZBM BULL 137, P 36 (INCLUDED IN FILE)
AZBM BULL 140, P 101 (INCLUDED IN FILE)
USBM IC 6905, P 46 (INCLUDED IN FILE)
ADMMR 12 U/G PLAN MAPS (FLAT FILE DRAWER 18)

CONTINUED ON NEXT PAGE

CONTINUATION OF GLADSTONE MCCABE

ADMMR MCCABE-GLADSTONE COLVO FILE
ADMMR SANTA FE AND MAGMA EXPLORATION DATA
STORED IN HEINRICHS DRAWER #13

01/11/96

ARIZONA DEPARTMENT OF MINES AND MINERAL RESOURCES FILE DATA

PRIMARY NAME: GLADSTONE MCCABE

ALTERNATE NAMES:

MCCABE EXTENSION
PATENTED CLAIMS MS 1158-60
MCCABE GLADSTONE MINE

YAVAPAI COUNTY MILS NUMBER: 1001B

LOCATION: TOWNSHIP 13 N RANGE 1 E SECTION 30 QUARTER SE
LATITUDE: N 34DEG 28MIN 38SEC LONGITUDE: W 112DEG 17MIN 30SEC
TOPO MAP NAME: POLAND JUNCTION - 7.5 MIN

CURRENT STATUS: PAST PRODUCER

COMMODITY:

GOLD
SILVER
COPPER SULFIDE
LEAD SULFIDE
ARSENIC
SILICON
MANGANESE
SULFUR PYRITE

BIBLIOGRAPHY:

ADMMR GLADSTONE MCCABE FILE
YAVAPAI MAG., MAR 1918 P 4-6 SHARLOT HALL
BLM MINERAL SURVEY MS 1158, 1159, 1160
BLM MINING DISTRICT SHEET 19
ANDERSON, C.A. & S.C. CREASY "GEOL & ORE DPST
OF JEROME AREA" USGS PP 308 P 171; 1958
LINDGREN, W. "ORE DPSTS OF JEROME & BRADSHAW
MTS QUADS" USGS BULL 782, P 130-132; 1926
KISCHMANN, A.H. ET AL, "PRIN GOLD PROD DIST
OF US" USGS PP 610, P 46; 1968
ADMMR CALIFORNIA FILE (ADJACENT PROPERTY)
ADMMR STAN WEST CORP FILE P 16,21 REGIS. STMT
AZBM BULL 137, P 36 (INCLUDED IN FILE)
AZBM BULL 140, P 101 (INCLUDED IN FILE)
USBM IC 6905, P 46 (INCLUDED IN FILE)
ADMMR 12 U/G PLAN MAPS (FLAT FILE DRAWER 18)

ADMMR PHOTOS

CONTINUED ON NEXT PAGE

CONTINUATION OF GLADSTONE MCCABE

ADMMR MCCABE-GLADSTONE COLVO FILE

MINE MAPS:

ADMMR #: 0003-001 STORAGE: 0465-01-03
DESCRIPTION: SECTION 833 AND 1050

ADMMR #: 0003-002 STORAGE: 0465-01-03
DESCRIPTION: SECTION FIRST QUARTER ORE RESERVE - 1050 GLADSTONE

ADMMR #: 0003-003 STORAGE: 0465-01-03
DESCRIPTION: SECTION FIRST QUARTER ORE RESERVE - 1250 & 1450 STOP

ADMMR #: 0003-004 STORAGE: 0465-01-03
DESCRIPTION: SECTION FIRST QUARTER ORE RESERVE - 1250 & 1450 STOP

ADMMR #: 0003-005 STORAGE: 0465-01-03
DESCRIPTION: SECTION 1650 ORE RESERVES

ADMMR #: 0003-006 STORAGE: 0465-01-03
DESCRIPTION: UG PLAN 833 LEVEL - PLAN VIEW

ADMMR #: 0003-007 STORAGE: 0465-01-03
DESCRIPTION: SECTION 1050 LEVEL #2

ADMMR #: 0003-008 STORAGE: 0465-01-03
DESCRIPTION: SECTION 1050 LEVEL 9N

ADMMR #: 0003-009 STORAGE: 0465-01-03
DESCRIPTION: SECTION FIRST QUARTER ORE RESERVE 1050 LEVEL 3 & 4

ADMMR #: 0003-010 STORAGE: 0465-01-03
DESCRIPTION: UG PLAN 833 LEVEL VIEW

ADMMR #: 0003-011 STORAGE: 0465-01-03
DESCRIPTION: UG PLAN 1050 LEVEL - PLAN VIEW

ADMMR #: 0003-012 STORAGE: 0465-01-03
DESCRIPTION: SAMPLE 1050 LEVEL - PLAN VIEW

ADMMR #: 0003-013 STORAGE: 0465-01-03
DESCRIPTION: UG PLAN 1250 LEVEL - PLAN VIEW

ADMMR #: 0003-014 STORAGE: 0465-01-03
DESCRIPTION: UG PLAN 1250 LEVEL - PLAN VIEW

ADMMR #: 0003-015 STORAGE: 0465-01-03
DESCRIPTION: UG PLAN 1450 LEVEL - PLAN VIEW

ADMMR #: 0003-016 STORAGE: 0465-01-03
DESCRIPTION: SITE PLAN OLD MCCABE SHAFT CONCRETE CAP

ADMMR #: 0003-017 STORAGE: 0465-01-03
DESCRIPTION: SITE PLAN MCCABE PLAN - OVERALL SITE PLAN

ADMMR #: 0003-018 STORAGE: 0465-01-03
DESCRIPTION: SITE PLAN 1993 BEFORE RECLAMATION

ADMMR #: 0003-019 STORAGE: 0465-01-03
DESCRIPTION: PROPERTY LOCATION T13N R1E

ADMMR #: 0003-020 STORAGE: 0465-01-03
DESCRIPTION: GEOLOGY LITTLE JESSIE MINE AREA

ADMMR #: 0003-021 STORAGE: 0465-01-03
DESCRIPTION: SAMPLE LITTLE JESSIE MINE AREA

ADMMR #: 0003-022 STORAGE: 0465-01-03
DESCRIPTION: PROPERTY

ADMMR #: 0003-023 STORAGE: 0465-01-03
DESCRIPTION: PROPERTY SOIL SURVEY - STATE SECTION 5300, KIT CARSON

ADMMR #: 0003-024 STORAGE: 0465-01-03
DESCRIPTION: PROPERTY

ADMMR #: 0003-025 STORAGE: 0465-01-03
DESCRIPTION: PROPERTY

ADMMR #: 0003-026 STORAGE: 0465-01-03
DESCRIPTION: PROPERTY STAN WEST MINING CORP, LOCATION T13N R1E

ADMMR #: 0003-027 STORAGE: 0465-01-03
DESCRIPTION: PROPERTY

CONTINUATION OF GLADSTONE MCCABE

ADMMR #: 0003-028 STORAGE: 0465-01-03
 DESCRIPTION: PROPERTY STAN WEST MINING CORP - LOCATION T13N R1E

ADMMR #: 0003-029 STORAGE: 0465-01-05
 DESCRIPTION: SECTION PROJECTED CENTER, SOONER PS 19-20 SECTION

ADMMR #: 0003-030 STORAGE: 0465-01-05
 DESCRIPTION: SECTION 7 + 00N

ADMMR #: 0003-031 STORAGE: 0465-01-05
 DESCRIPTION: SECTION SECTION A

ADMMR #: 0003-032 STORAGE: 0465-01-05
 DESCRIPTION: SECTION MCCABE PAST PRODUCT - POTENTIAL

ADMMR #: 0003-033 STORAGE: 0465-01-05
 DESCRIPTION: SECTION

ADMMR #: 0003-034 STORAGE: 0465-01-05
 DESCRIPTION: SAMPLE MONOPOLIST PROJECT - PROPOSED UG DRILLING

ADMMR #: 0003-035 STORAGE: 0465-01-05
 DESCRIPTION: SAMPLE FIGURE 5 - SAMPLE LOCATION MAP - KIT CARSON

ADMMR #: 0003-036 STORAGE: 0465-01-05
 DESCRIPTION: SAMPLE

ADMMR #: 0003-037 STORAGE: 0465-01-05
 DESCRIPTION: SAMPLE

ADMMR #: 0003-038 STORAGE: 0465-01-05
 DESCRIPTION: PROPERTY T13N R1E

ADMMR #: 0003-039 STORAGE: 0465-01-05
 DESCRIPTION: UG LEVEL MCCABE MINE 1450 LEVEL DRIVE

ADMMR #: 0003-040 STORAGE: 0465-01-05
 DESCRIPTION: UG LEVEL 1450 LEVEL DRIVE

ADMMR #: 0003-041 STORAGE: 0465-01-05
 DESCRIPTION: SECTION SECTION 7 + 00N

ADMMR #: 0003-042 STORAGE: 0465-01-05
 DESCRIPTION: SECTION PROJECTED CENTER SOONER PS 19-20 SECTION

ADMMR #: 0003-043 STORAGE: 0465-01-05
 DESCRIPTION: SECTION SECTION B 1:=50'

ADMMR #: 0003-044 STORAGE: 0465-01-05
 DESCRIPTION: SECTION

ADMMR #: 0003-045 STORAGE: 0465-01-05
 DESCRIPTION: SECTION SECTION C LOOKING NORTHERLY, DIAMOND DRILL #

ADMMR #: 0003-046 STORAGE: 0465-01-05
 DESCRIPTION: SECTION SECTION A

ADMMR #: 0003-047 STORAGE: 0465-01-05
 DESCRIPTION: SAMPLE MAGMA GOLD MCCABE DIVISION DDH MAP

ADMMR #: 0003-048 STORAGE: 0465-01-05
 DESCRIPTION: SECTION MAGMA COPPPER - ORE RESERVE STUDY

ADMMR #: 0003-049 STORAGE: 0465-01-05
 DESCRIPTION: SECTION MAGMA COPPER, ORE RESERVE STUDY

ADMMR #: 0003-050 STORAGE: 0465-01-05
 DESCRIPTION: SECTION

ADMMR #: 0003-051 STORAGE: 0465-01-05
 DESCRIPTION: SECTION VERTICAL LONGITUDINAL STUDY, GREEN VEIN

ADMMR #: 0003-052 STORAGE: 0465-01-05
 DESCRIPTION: SECTION

ADMMR #: 0003-053 STORAGE: 0465-01-05
 DESCRIPTION: SECTION HENRIETTA VEIN JUNCTION

CONTINUED ON NEXT PAGE

CONTINUATION OF GLADSTONE MCCABE

ADMMR #: 0003-054 STORAGE: 0465-01-05
 DESCRIPTION: SECTION SOONER SHAFT AND MCCABE SHAFT
 ADMMR #: 0003-055 STORAGE: 0465-01-05
 DESCRIPTION: SECTION BLUE VEIN - RED VEIN
 ADMMR #: 0003-056 STORAGE: 0465-01-06
 DESCRIPTION: SECTION SOONER SHAFT
 ADMMR #: 0003-057 STORAGE: 0465-01-06
 DESCRIPTION: SECTION ORANGE VEIN - HANGING WALL SPLIT
 ADMMR #: 0003-058 STORAGE: 0465-01-06
 DESCRIPTION: SECTION
 ADMMR #: 0003-059 STORAGE: 0465-01-06
 DESCRIPTION: SECTION ORANGE VEIN - VERTICAL LONGITUDINAL SECTION
 ADMMR #: 0003-060 STORAGE: 0465-01-06
 DESCRIPTION: SECTION SOONER SHAFT - MCCABE SHAFT
 ADMMR #: 0003-061 STORAGE: 0465-01-06
 DESCRIPTION: SECTION RED VEIN - LONGITUDINAL PROJECTION
 ADMMR #: 0003-062 STORAGE: 0465-01-06
 DESCRIPTION: SECTION
 ADMMR #: 0003-063 STORAGE: 0465-01-06
 DESCRIPTION: OTHER TURAM E.M. AND I.P. ANOMALIES
 ADMMR #: 0003-064 STORAGE: 0465-01-06
 DESCRIPTION: GEOCHEMICAL COPPER - SOIL GEOCHEMISTRY, PLATE 14
 ADMMR #: 0003-065 STORAGE: 0465-01-06
 DESCRIPTION: GEOCHEMICAL COPPER - SOIL GEOCHEMISTRY, PLATE 14
 ADMMR #: 0003-066 STORAGE: 0465-01-06
 DESCRIPTION: GEOCHEMICAL ZINC - SOIL GEOCHEMISTRY, PLATE 16
 ADMMR #: 0003-067 STORAGE: 0465-01-06
 DESCRIPTION: GEOCHEMICAL LEAD-SOIL GEOCHEMISTRY - PLATE 15
 ADMMR #: 0003-068 STORAGE: 0465-01-06
 DESCRIPTION: SECTION HENRIETTA LONG PROFILE
 ADMMR #: 0003-069 STORAGE: 0465-01-06
 DESCRIPTION: PROPERTY SHAFT LOCATION
 ADMMR #: 0003-070 STORAGE: 0465-01-06
 DESCRIPTION: SECTION LONGITUDINAL SECTION - SURFACE TO 400 LEVEL
 ADMMR #: 0003-071 STORAGE: 0465-01-06
 DESCRIPTION: SECTION SHAFT LOCATION - ORE SHOOTS - SURVEY STATION
 ADMMR #: 0003-072 STORAGE: 0465-01-06
 DESCRIPTION: SECTION SHAFT LOCATIONS - STOPES
 ADMMR #: 0003-073 STORAGE: 0465-01-06
 DESCRIPTION: SECTION SHAFT LOCATIONS - ORE SHOOTS & SURVEY STATION
 ADMMR #: 0003-074 STORAGE: 0465-01-06
 DESCRIPTION: SAMPLE RECONSTRUCTED ASSAY SECTION
 ADMMR #: 0003-075 STORAGE: 0465-01-06
 DESCRIPTION: SAMPLE
 ADMMR #: 0003-076 STORAGE: 0465-01-06
 DESCRIPTION: SECTION PORTION OF PRESCOTT VALLEY SOUTH
 ADMMR #: 0003-077 STORAGE: 0465-01-06
 DESCRIPTION: SECTION LONGITUDINAL PROJECTION
 ADMMR #: 0003-078 STORAGE: 0465-01-06
 DESCRIPTION: GEOLOGY GENERALIZED SURFACE GEOLOGY OF MCCABE MINE
 ADMMR #: 0003-079 STORAGE: 0465-01-06
 DESCRIPTION: GEOLOGY 2+50 SOUTH LOOKING NORTHEAST

CONTINUED ON NEXT PAGE

CONTINUATION OF GLADSTONE MCCABE

ADMMR #: 0003-080 STORAGE: 0465-01-07
DESCRIPTION: SECTION 100 - 1450 LEVEL

ADMMR #: 0003-081 STORAGE: 0465-01-07
DESCRIPTION: SITE PLAN PROPOSED UNDERGROUND DRILLING - HENRIETTA

ADMMR #: 0003-082 STORAGE: 0465-01-07
DESCRIPTION: SITE PLAN PROPOSED UNDERGROUND DRILLING - MONOPOLIST

ADMMR #: 0003-083 STORAGE: 0465-01-07
DESCRIPTION: GEOLOGY GEOLOGIC MAP OF THE LELAN MINE AREA

ADMMR #: 0003-084 STORAGE: 0465-01-07
DESCRIPTION: SECTION 4TH LEVEL

ADMMR #: 0003-085 STORAGE: 0465-01-07
DESCRIPTION: SECTION 5TH LEVEL

ADMMR #: 0003-086 STORAGE: 0465-01-07
DESCRIPTION: SECTION 8TH LEVEL

ADMMR #: 0003-087 STORAGE: 0465-01-07
DESCRIPTION: SECTION 6TH LEVEL

ADMMR #: 0003-088 STORAGE: 0465-01-07
DESCRIPTION: SECTION 7TH LEVEL

ADMMR #: 0003-089 STORAGE: 0465-01-07
DESCRIPTION: SECTION ASSAY MAP SHOWING PART OF THE 8TH LEVEL

ADMMR #: 0003-090 STORAGE: 0465-01-07
DESCRIPTION: SAMPLE DRILL HOLE ASSAY LOG 400-800

ADMMR #: 0003-091 STORAGE: 0465-01-07
DESCRIPTION: SAMPLE DRILL HOLE ASSAY LOG 100-400

ADMMR #: 0003-092 STORAGE: 0465-01-07
DESCRIPTION: SAMPLE DRILL HOLE ASSAY LOG 800-1100

ADMMR #: 0003-093 STORAGE: 0465-01-07
DESCRIPTION: SAMPLE 1450 LEVEL - SFM UG CORE HOLES, 2 COPIES

ADMMR #: 0003-094 STORAGE: 0465-01-07
DESCRIPTION: SAMPLE 833 LEVEL-SFM UG CORE HOLES - 2 COPIES

ADMMR #: 0003-095 STORAGE: 0465-01-07
DESCRIPTION: SAMPLE DRILL HOLE PLAN, SURFACE & UG CORE HOLES

ADMMR #: 0003-096 STORAGE: 0465-01-07
DESCRIPTION: SAMPLE 1050 LEVEL - SFM UG CORE HOLES, 2 COPIES

ADMMR #: 0003-097 STORAGE: 0465-01-07
DESCRIPTION: SAMPLE DRILL HOLE SECTION SHOWING GOLD ASSAYS

ADMMR #: 0003-098 STORAGE: 0465-01-07
DESCRIPTION: SAMPLE 1250 LEVEL, 2 COPIES

ADMMR #: 0003-099 STORAGE: 0465-01-07
DESCRIPTION: SAMPLE SHAFT SECTION/N35W/200' CORRIDOR

ADMMR #: 0003-100 STORAGE: 0465-01-07
DESCRIPTION: SAMPLE SECTION 400 N/N35W/200' CORRIDOR

ADMMR #: 0003-101 STORAGE: 0465-01-07
DESCRIPTION: SAMPLE SECTION 200S/N35W/200' CORRIDOR

ADMMR #: 0003-102 STORAGE: 0465-01-07
DESCRIPTION: SAMPLE SECTION 400S/N35W/200' CORRIDOR, 2 COPIES

ADMMR #: 0003-103 STORAGE: 0465-01-07
DESCRIPTION: SAMPLE SECTION 600N/N35W/200' CORRIDOR, 2 COPIES

ADMMR #: 0003-104 STORAGE: 0465-01-07
DESCRIPTION: SAMPLE SECTION 600S/N35W/200' CORRIDOR, 2 COPIES

ADMMR #: 0003-105 STORAGE: 0465-01-07
DESCRIPTION: SAMPLE SECTION 800N/N35W/200' CORRIDOR, 2 COPIES

CONTINUED ON NEXT PAGE

CONTINUATION OF GLADSTONE MCCABE

ADMMR #:	0003-106	STORAGE:	0465-01-07
DESCRIPTION:	SAMPLE		SFM UG CORE HOLES SHOWING GOLD VALUES, 2 COP
ADMMR #:	0003-107	STORAGE:	0465-01-07
DESCRIPTION:	SAMPLE		SECTION 800S/N35W/200' CORRIDOR
ADMMR #:	0003-108	STORAGE:	0465-01-07
DESCRIPTION:	SAMPLE		SHAFT SECTION/N35W/200' CORRIDOR, 2 COPIES
ADMMR #:	0003-109	STORAGE:	0465-01-08
DESCRIPTION:	SAMPLE		DRILL HOLE PLAN, 2 COPIES
ADMMR #:	0003-110	STORAGE:	0465-01-08
DESCRIPTION:	SAMPLE		DRILL HOLE PLAN, DRIFT TRACES, 2 COPIES
ADMMR #:	0003-111	STORAGE:	0465-01-08
DESCRIPTION:	SAMPLE		DRILL HOLE PLAN - DRIFT TRACES, 2 COPIES
ADMMR #:	0003-112	STORAGE:	0465-01-08
DESCRIPTION:	SAMPLE		D.D.H. LOCATIONS
ADMMR #:	0003-113	STORAGE:	0465-01-08
DESCRIPTION:	SAMPLE		GRADE ISOPACH
ADMMR #:	0003-114	STORAGE:	0465-01-08
DESCRIPTION:	SECTION		GRADE SECTION - LOOKING NORTHEAST
ADMMR #:	0003-115	STORAGE:	0465-01-08
DESCRIPTION:	GEOCHEMICAL		LEAD-ZINC SOIL GEOCHEMISTRY
ADMMR #:	0003-116	STORAGE:	0465-01-08
DESCRIPTION:	SAMPLE		TRENCH LOCATIONS
ADMMR #:	0003-117	STORAGE:	0465-01-08
DESCRIPTION:	PROPERTY		2 COPIES
ADMMR #:	0003-118	STORAGE:	0465-01-08
DESCRIPTION:	GEOLOGY		
ADMMR #:	0003-119	STORAGE:	0465-01-08
DESCRIPTION:	GEOPHYSICAL		TUSAM E.M. & I.P. ANOMALIES
ADMMR #:	0003-120	STORAGE:	0465-01-08
DESCRIPTION:	GEOLOGY		GEOLOGY - STRUCTURE OVERLAY
ADMMR #:	0003-121	STORAGE:	0465-01-08
DESCRIPTION:	GEOLOGY		AERIAL PHOTO 1" = 500' IRON KING UNIT
ADMMR #:	0003-122	STORAGE:	0465-01-08
DESCRIPTION:	GEOLOGY		GEOLOGY STRUCTURE OVERLAY
ADMMR #:	0003-123	STORAGE:	0465-01-08
DESCRIPTION:	GEOLOGY		AERIAL PHOTO 1" = 500'
ADMMR #:	0003-124	STORAGE:	0465-01-08
DESCRIPTION:	GEOLOGY		AERIAL PHOTO 1" = 500'

POLAND JUNCTION QUADRANGLE

ARIZONA—YAVAPAI CO.

7.5 MINUTE SERIES (TOPOGRAPHIC)

NE/4 MT. UNION 15' QUADRANGLE

3553 II S
(HUMBO)

3553 III SE
PRESCOTT VALLEY SOUTH) 380

381

17'30"

382

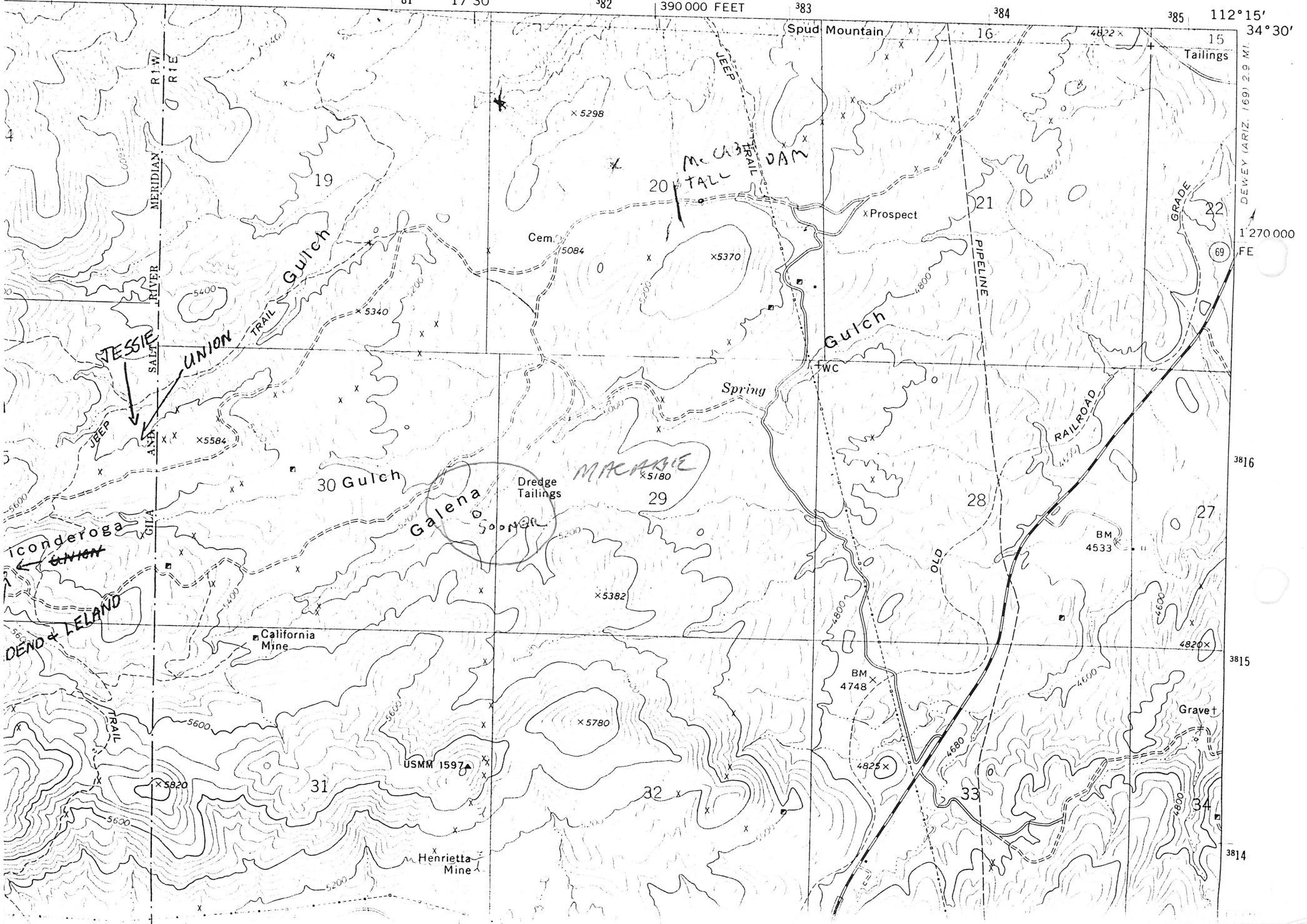
390 000 FEET

383

384

385

112°15'
34°30'

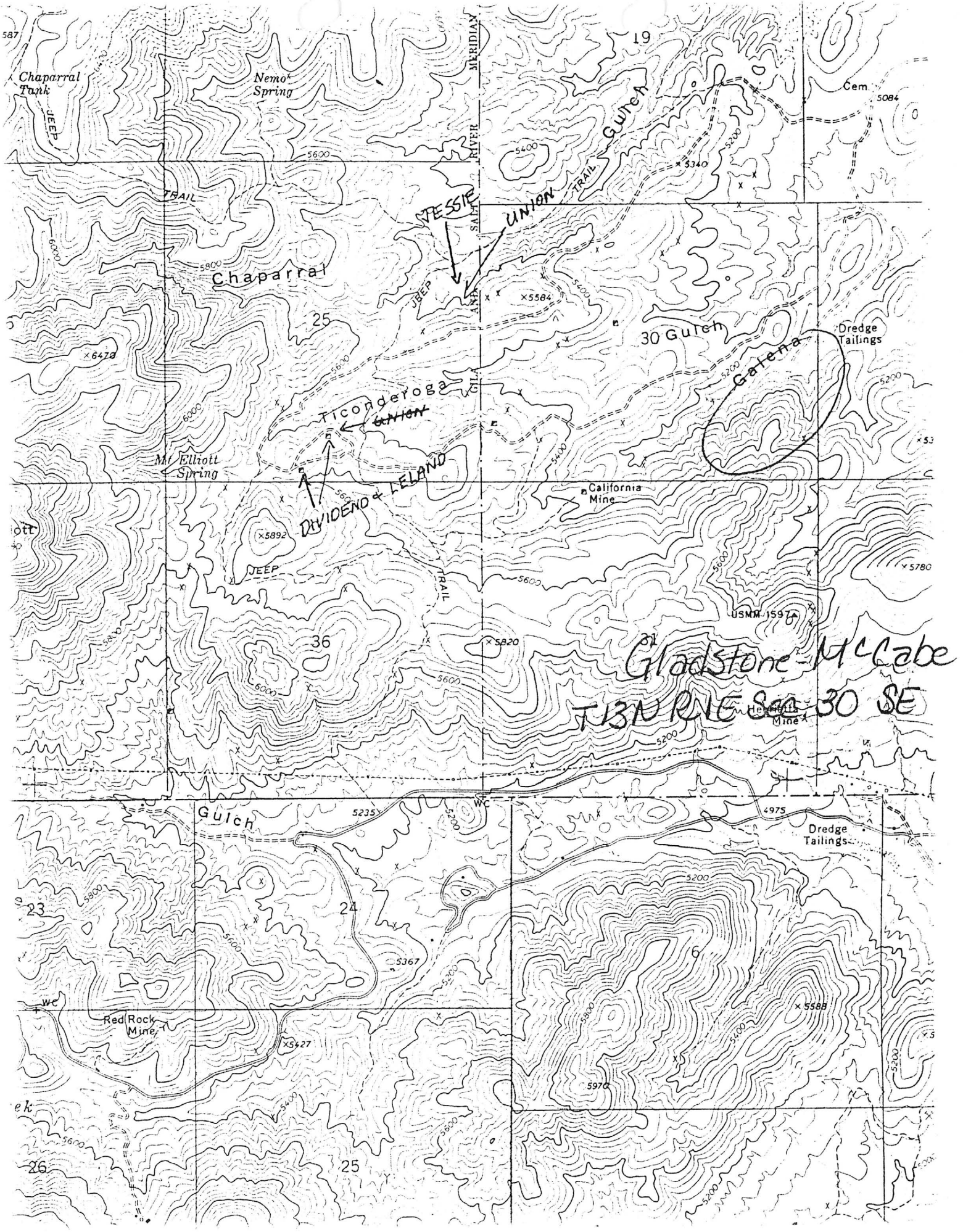


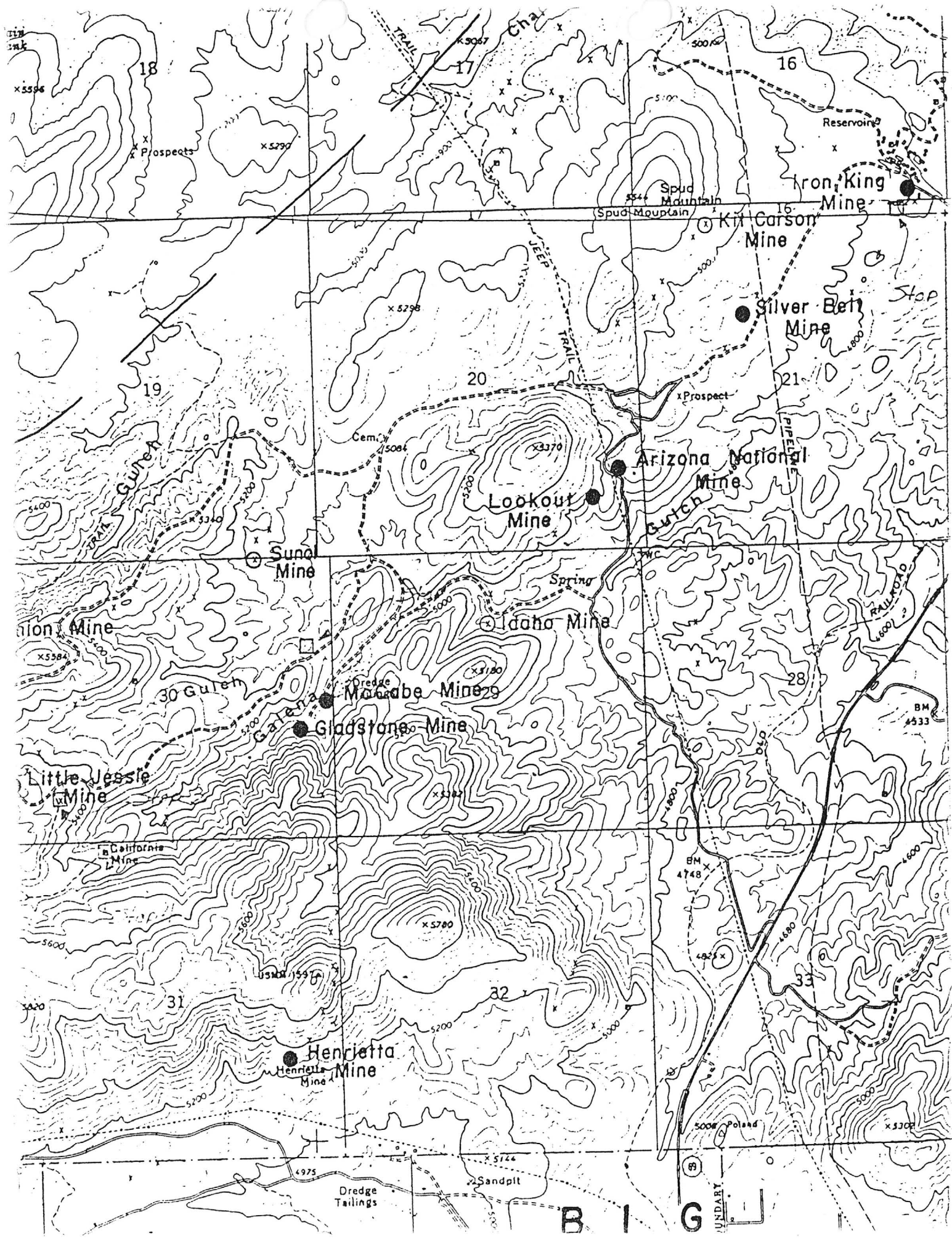
DEWEY (ARIZ. 169) 2.9 MI.
1 270 000
FE

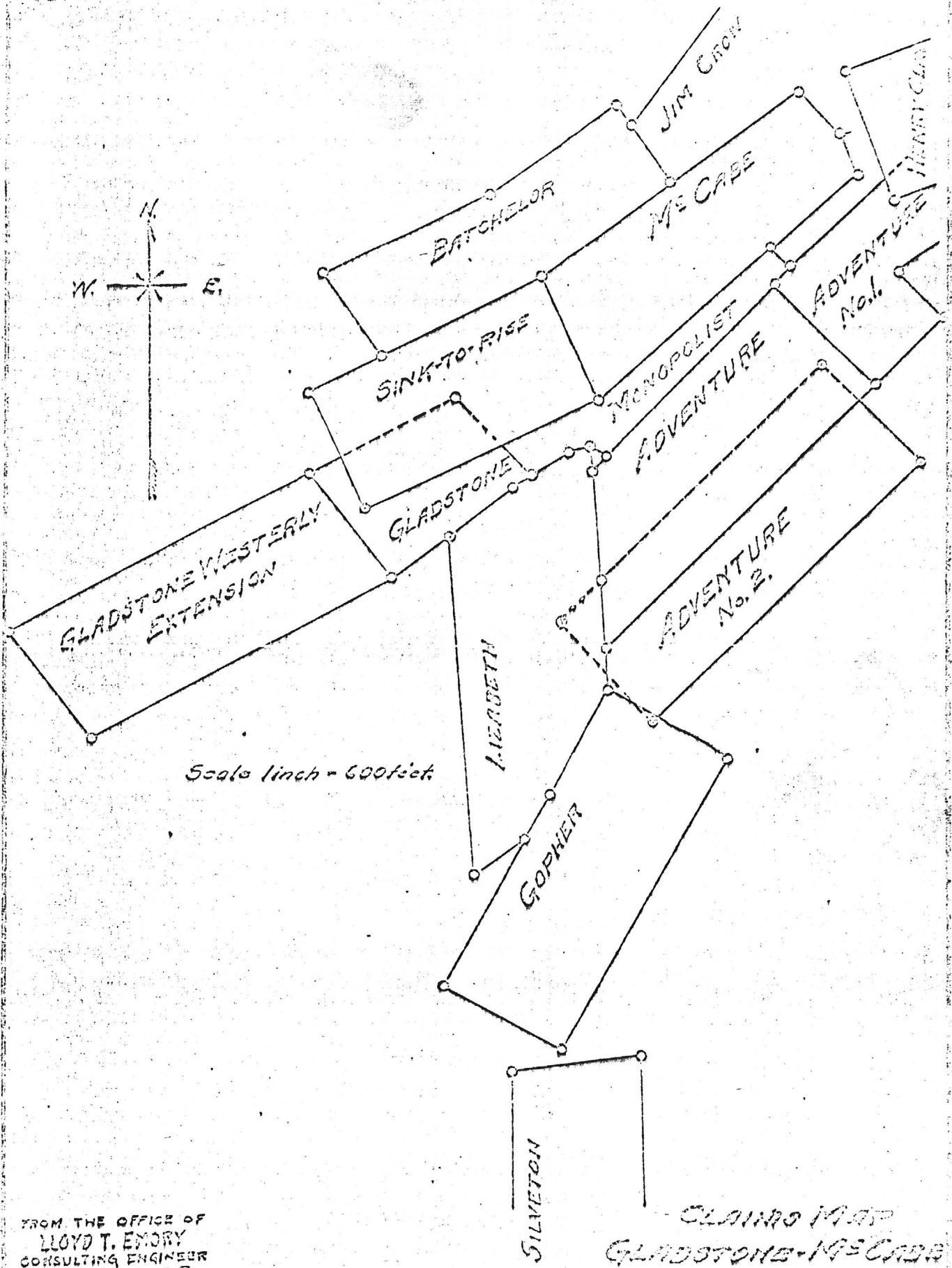
3816

3815

3814



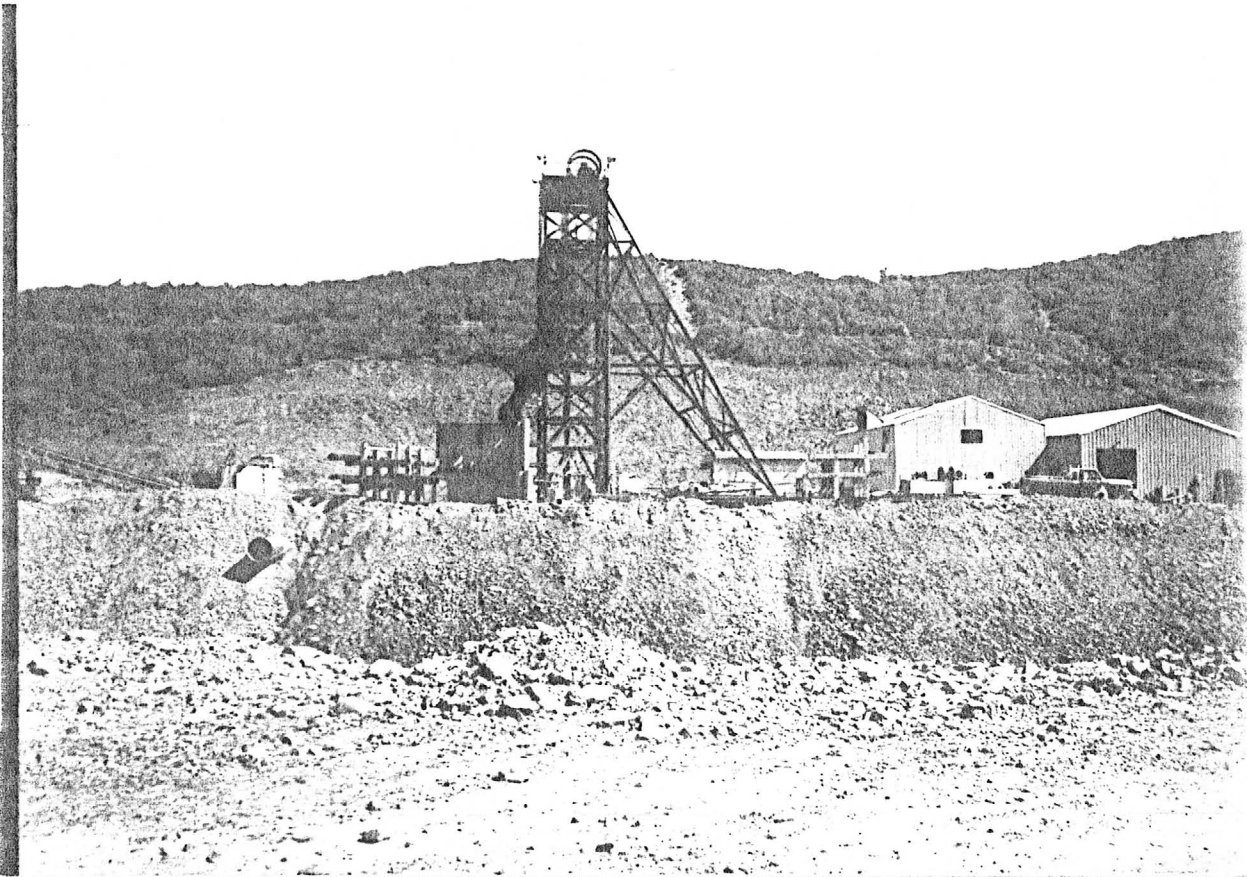




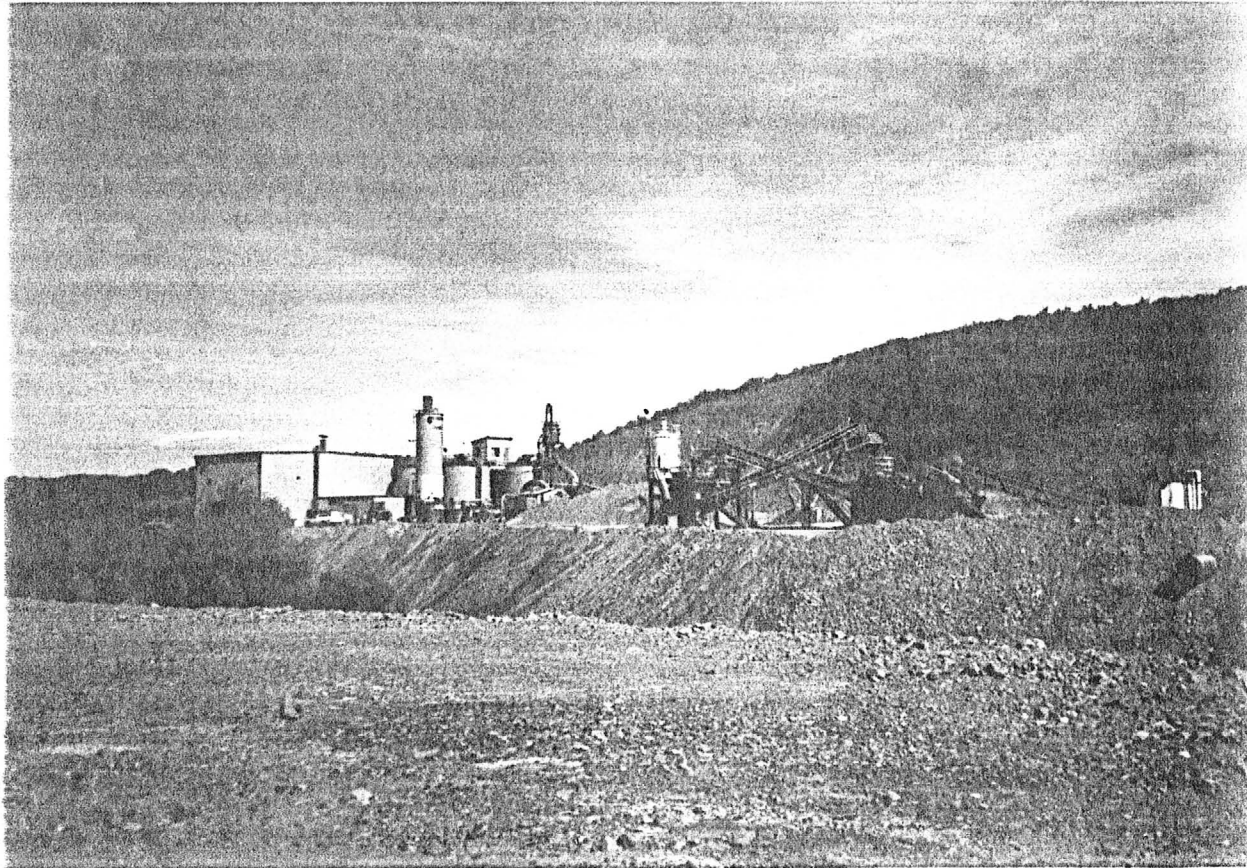
Scale 1 inch = 600 feet

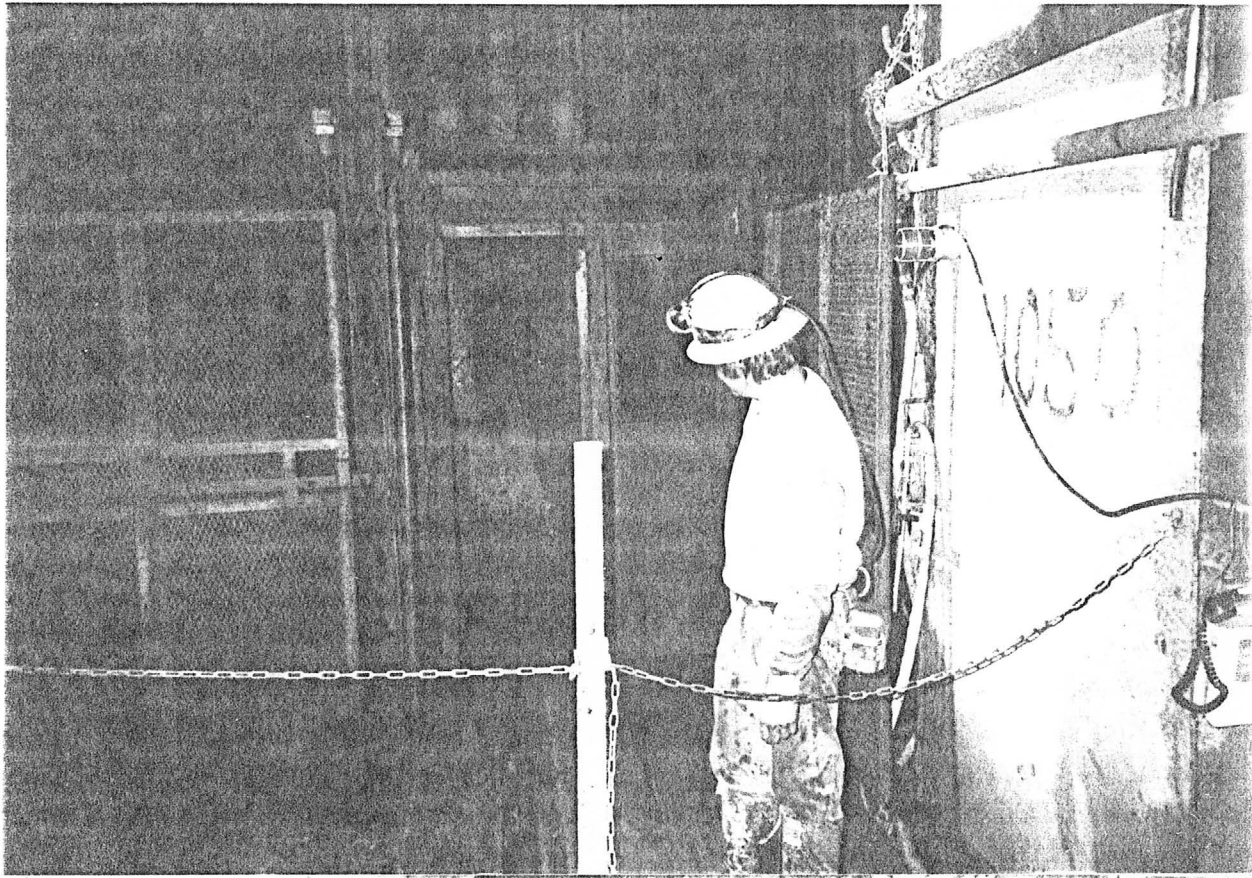
FROM THE OFFICE OF
 LLOYD T. EMORY
 CONSULTING ENGINEER
 4 S. 15TH ST., PHILA., PA.

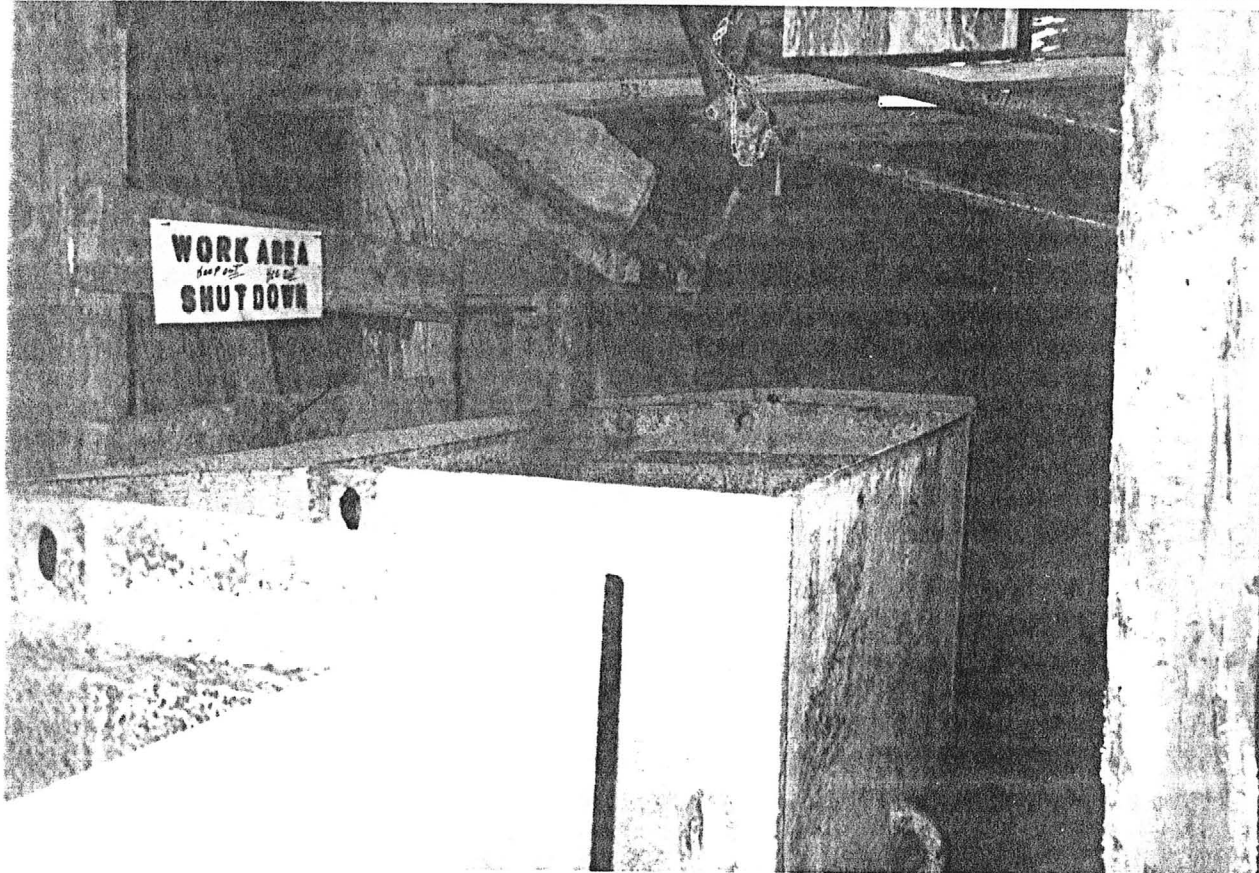
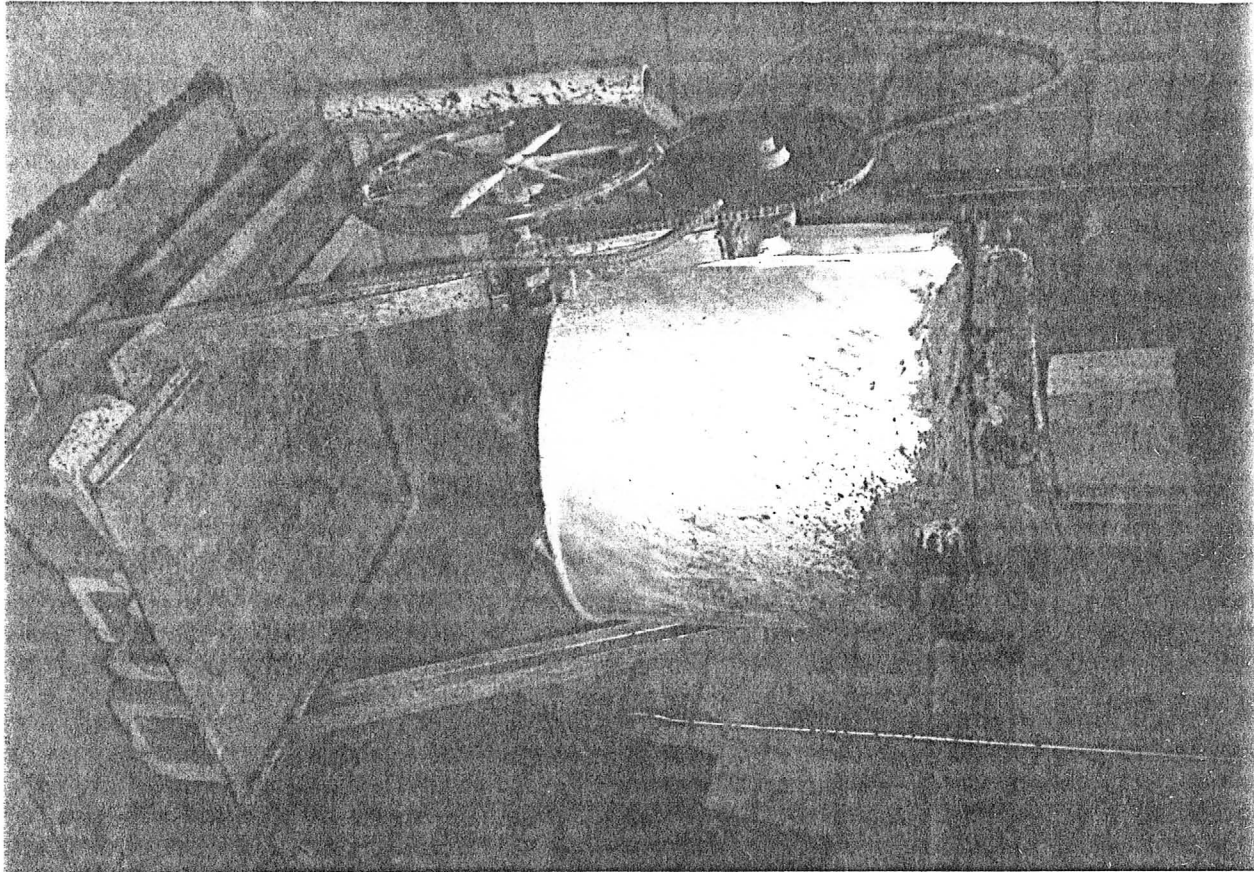
CLAIMS MAP
 GLADSTONE-ME CASE
 MINES.

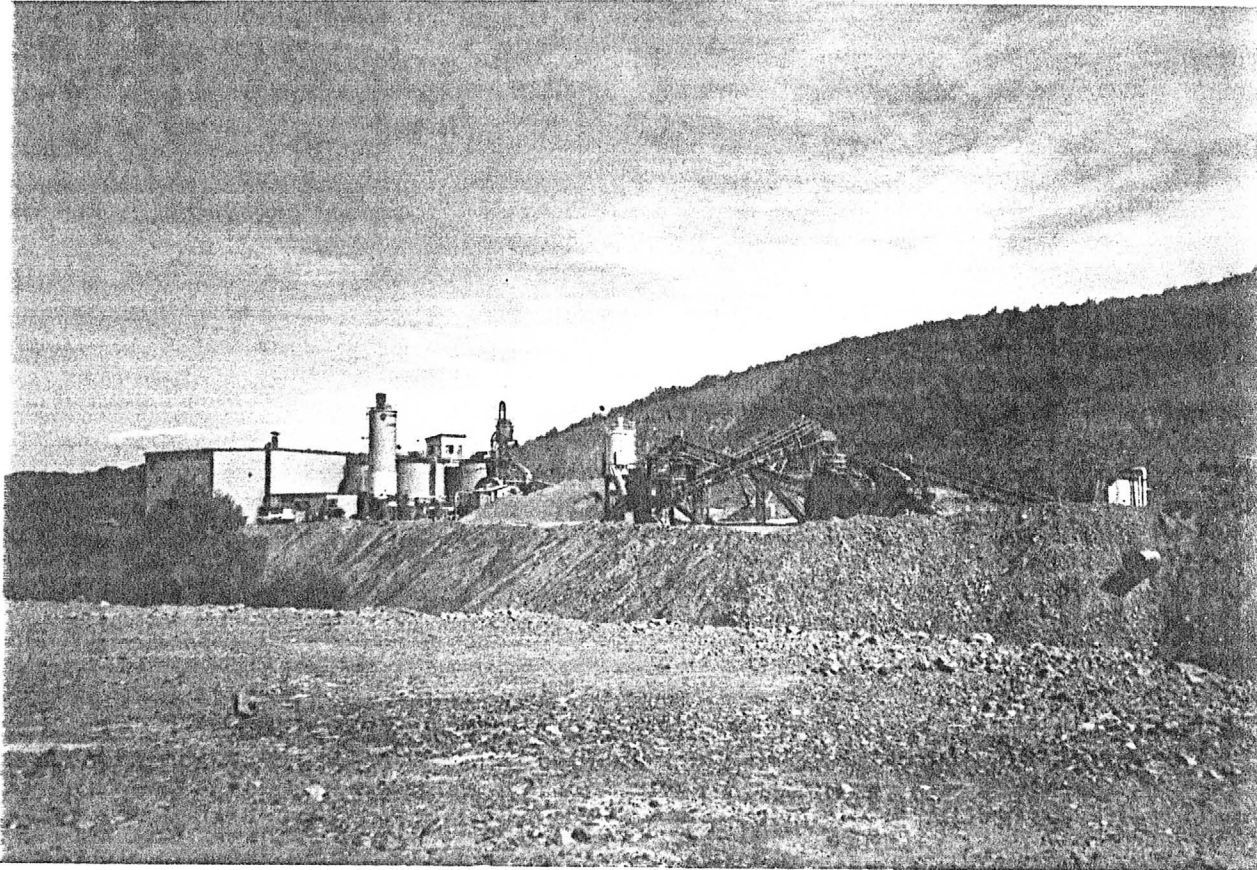
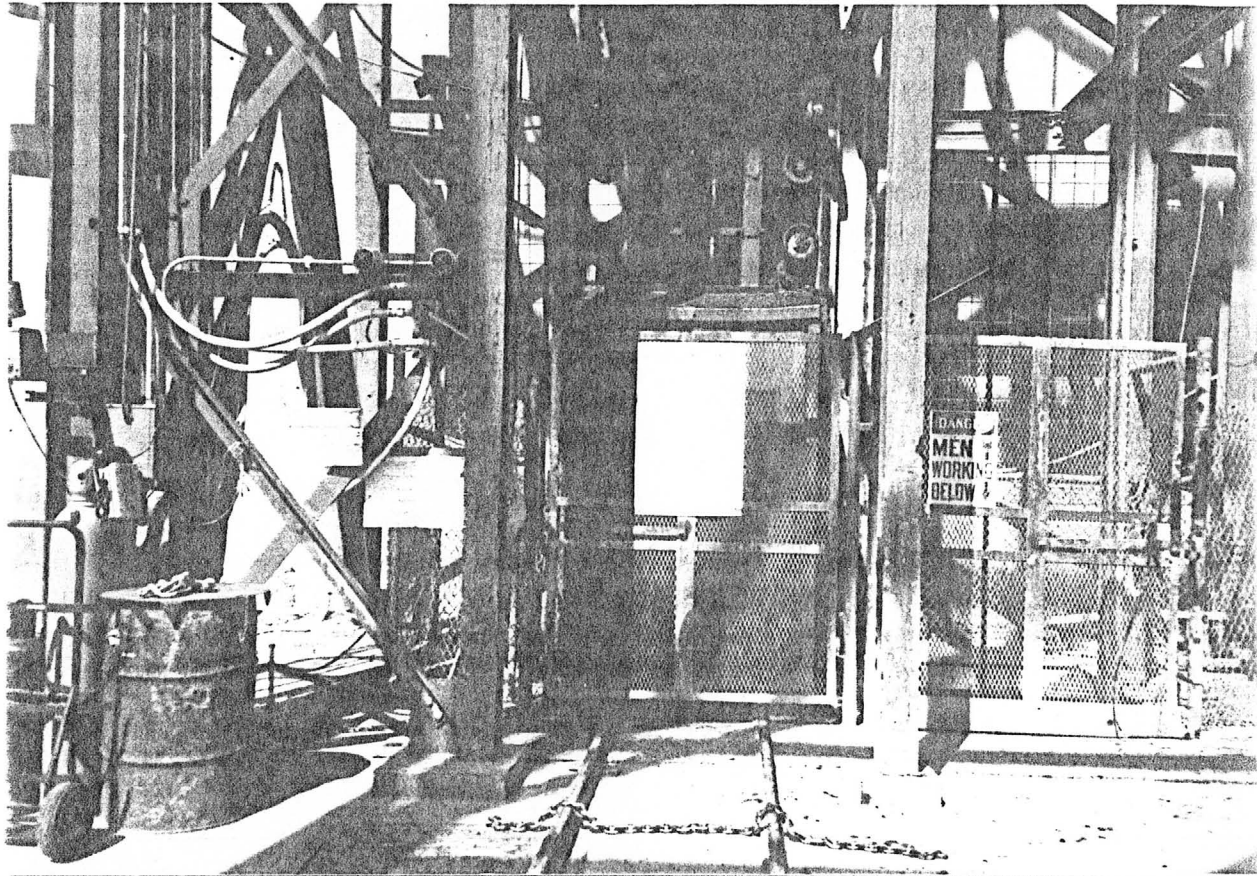


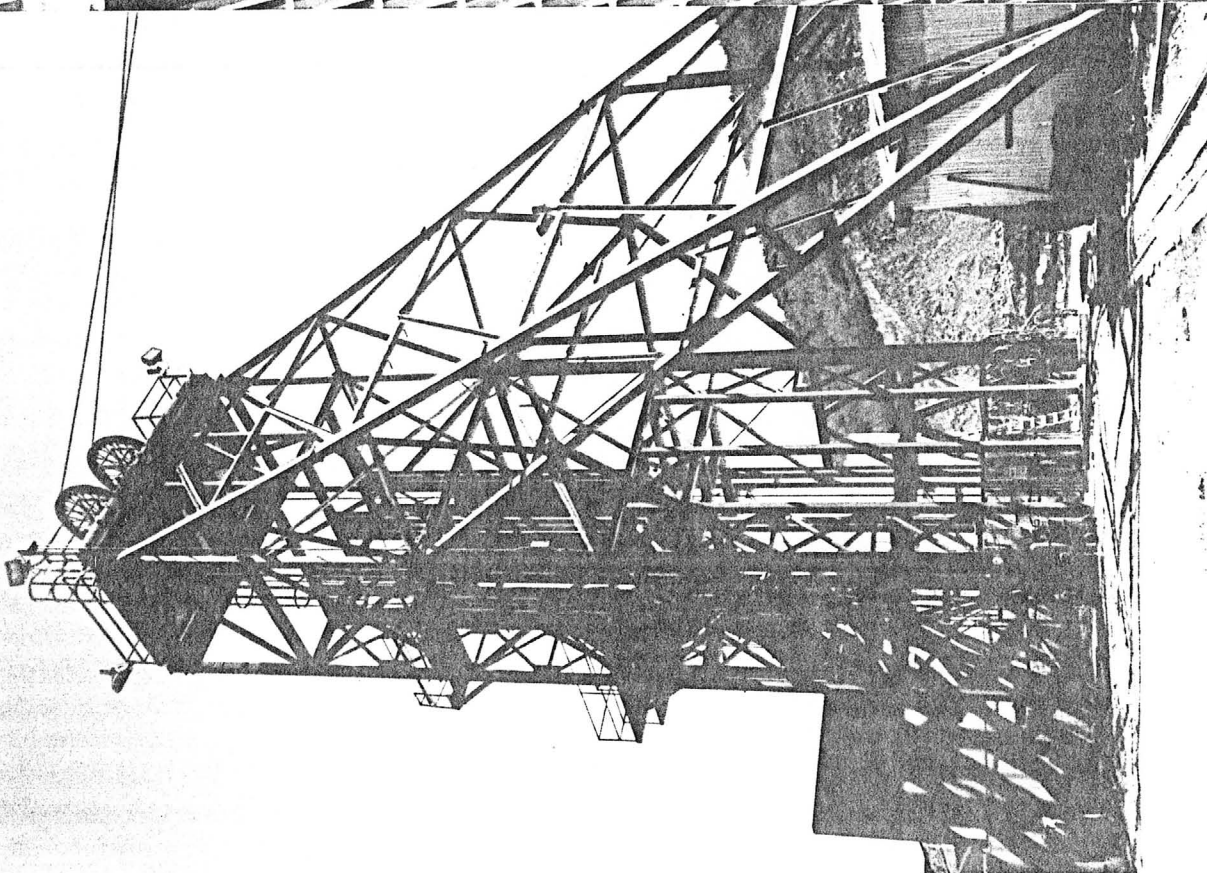
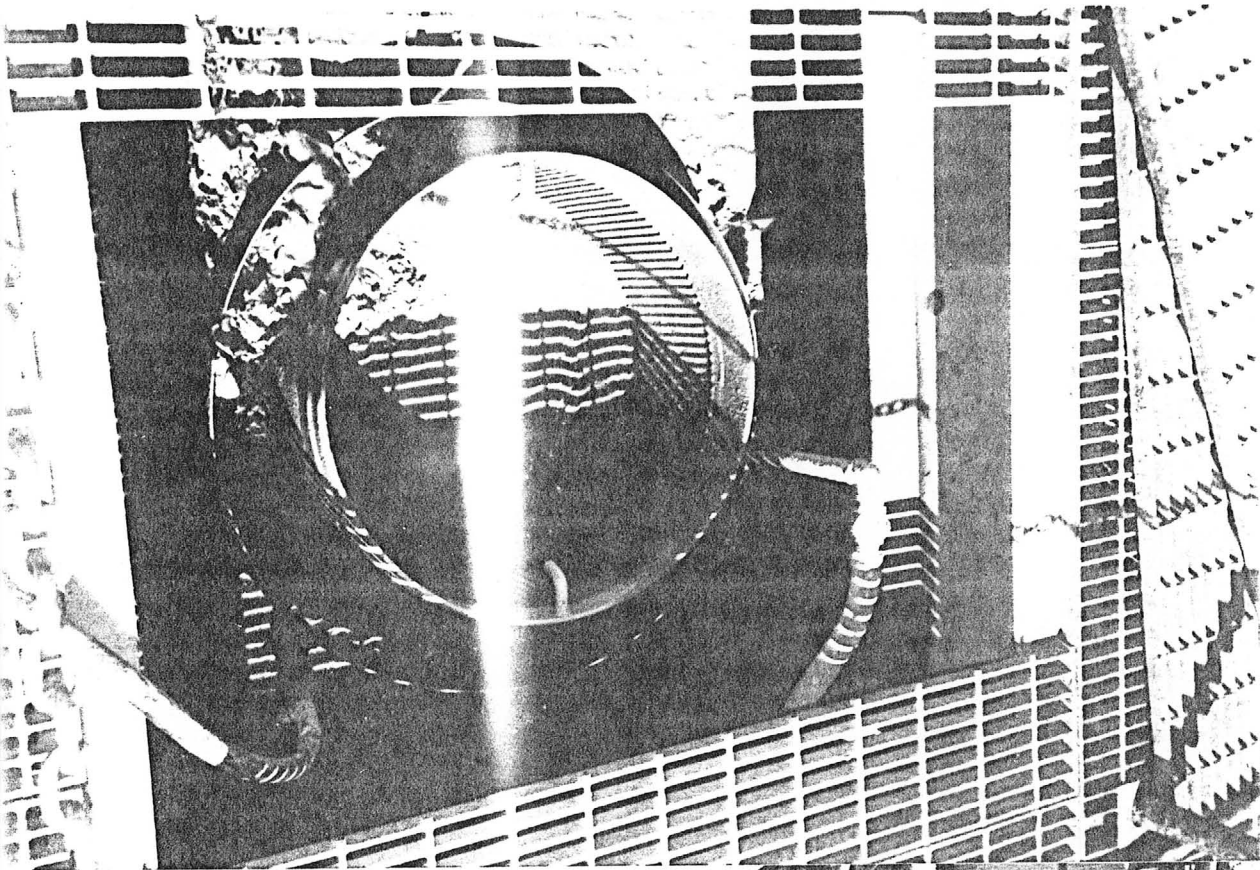
A-60^s (1989)

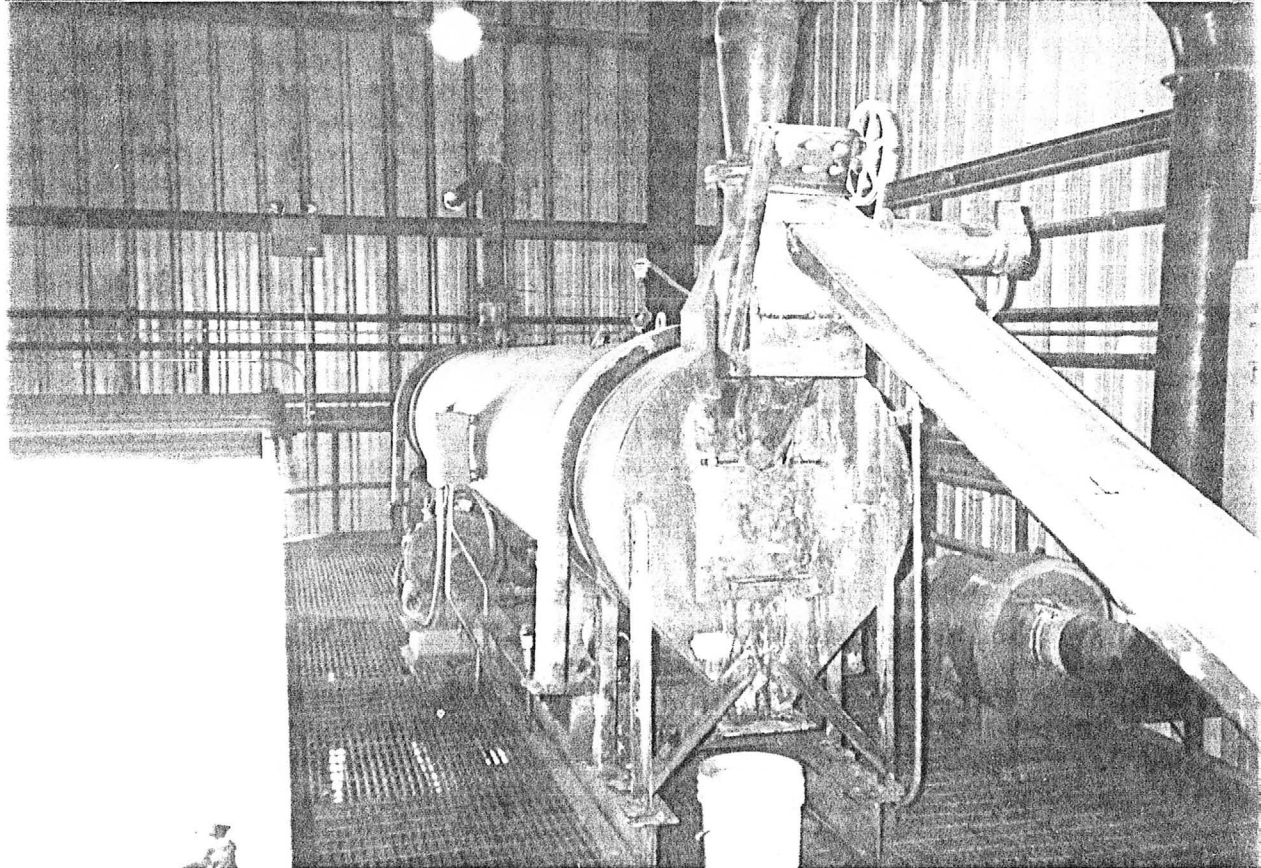
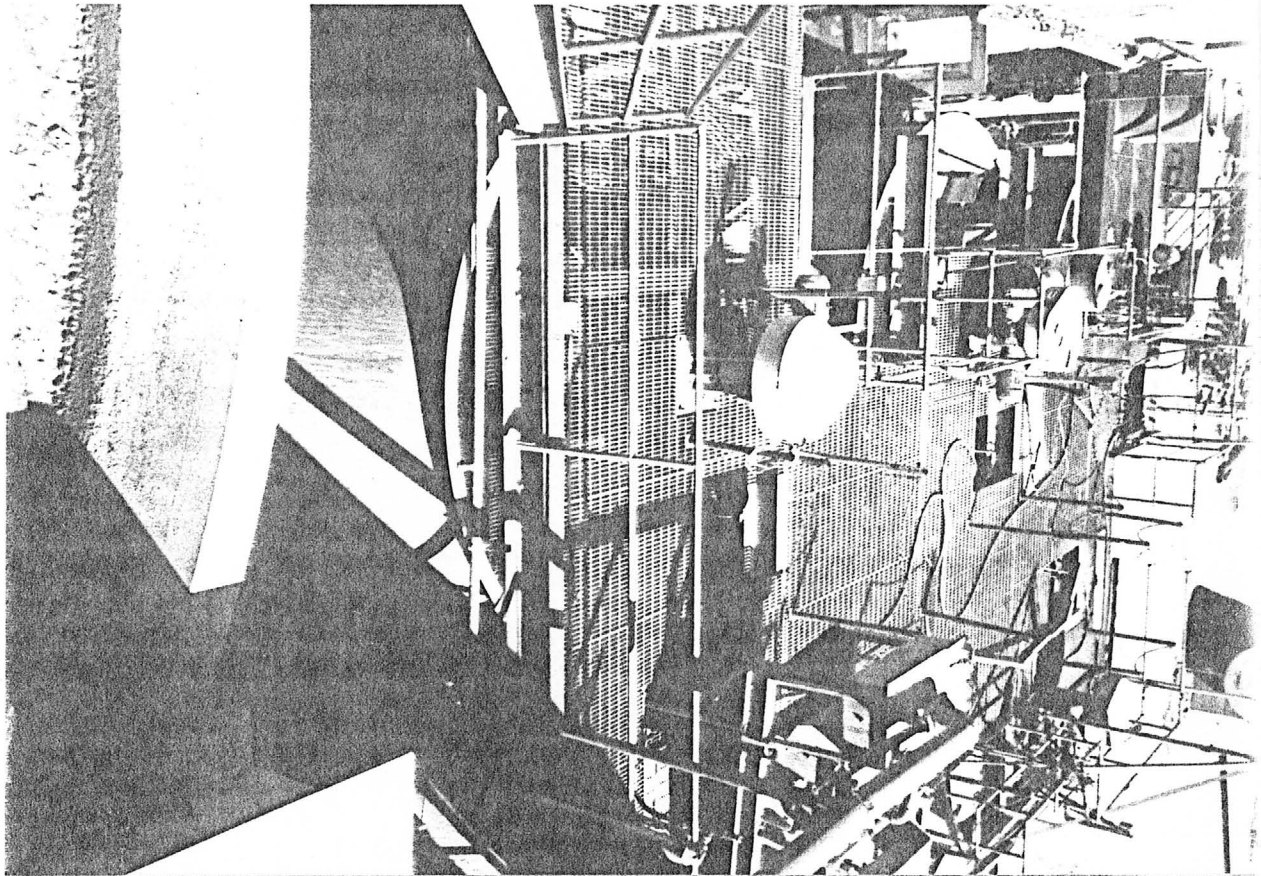


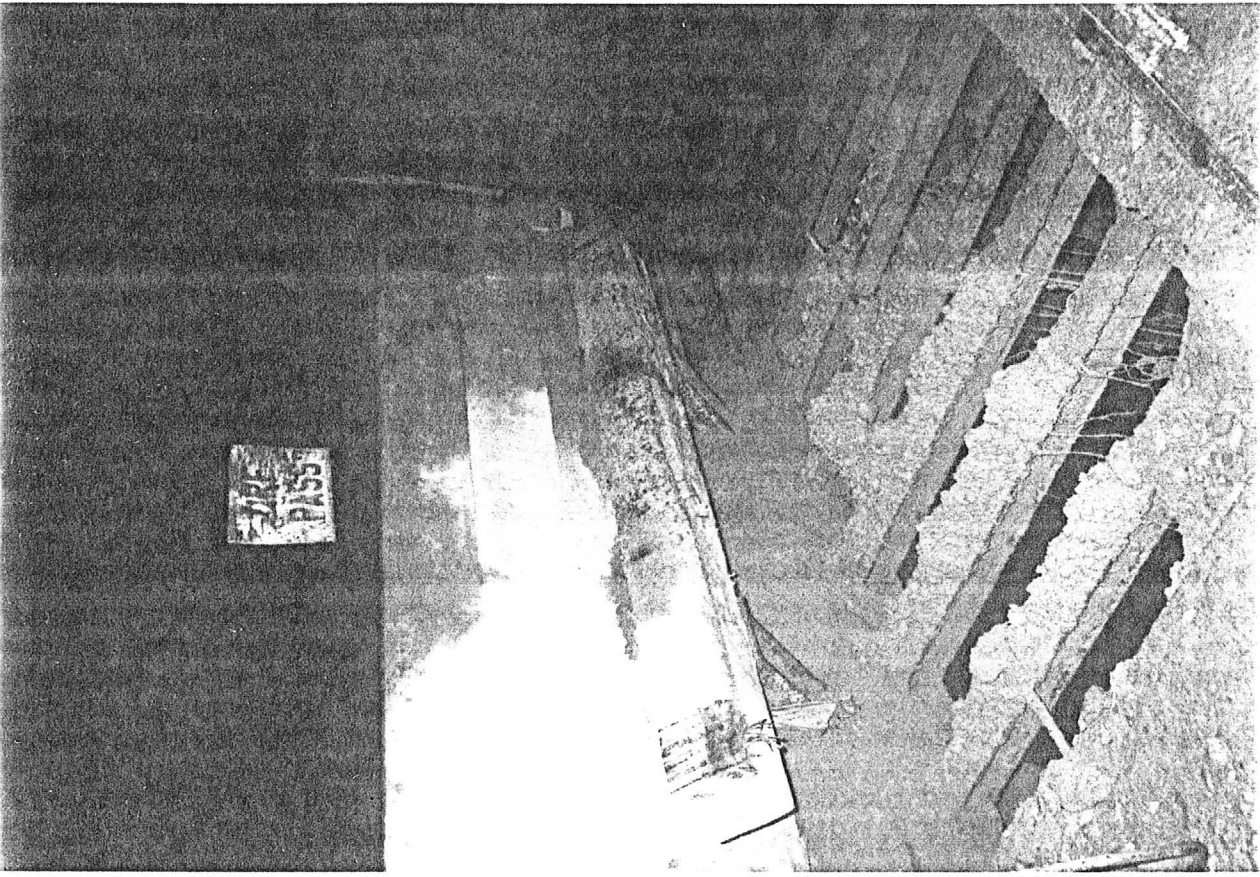


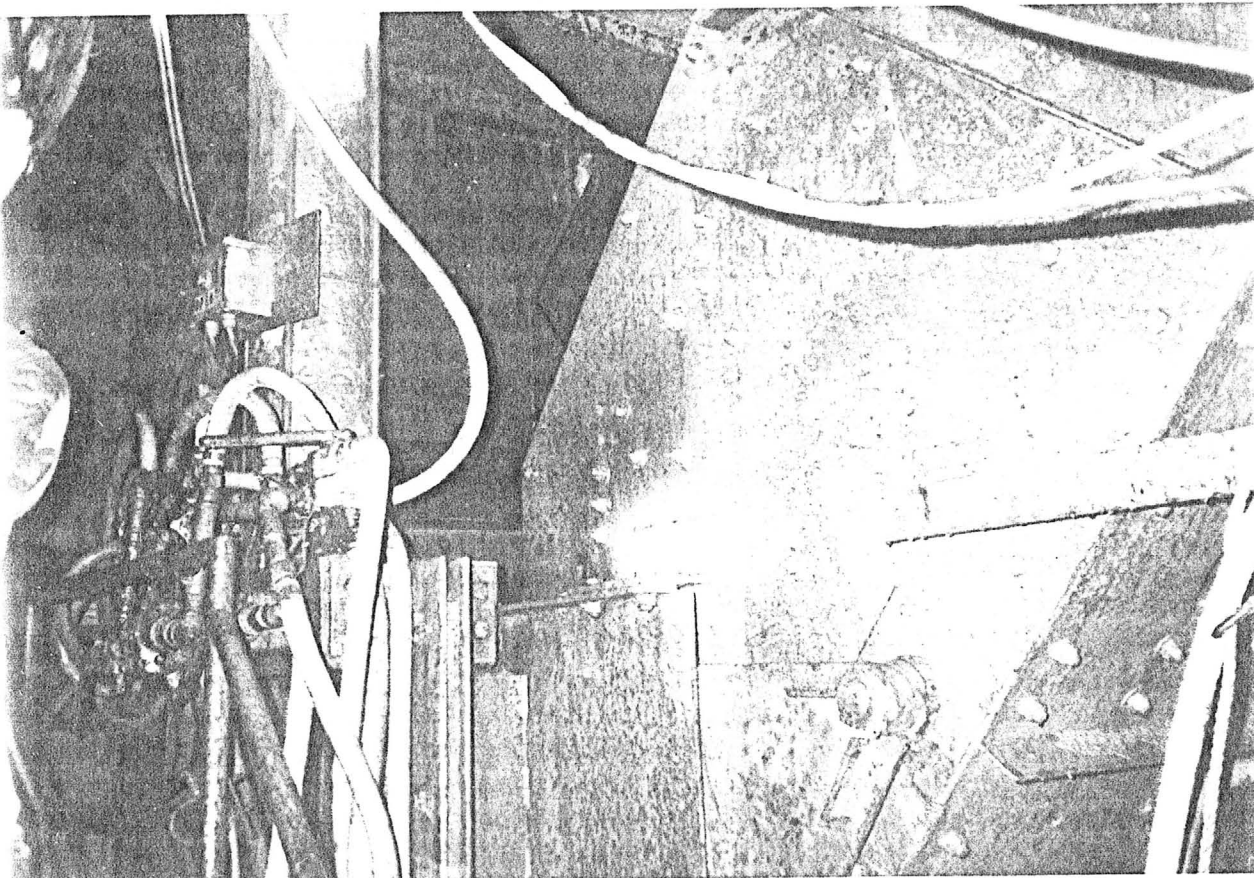
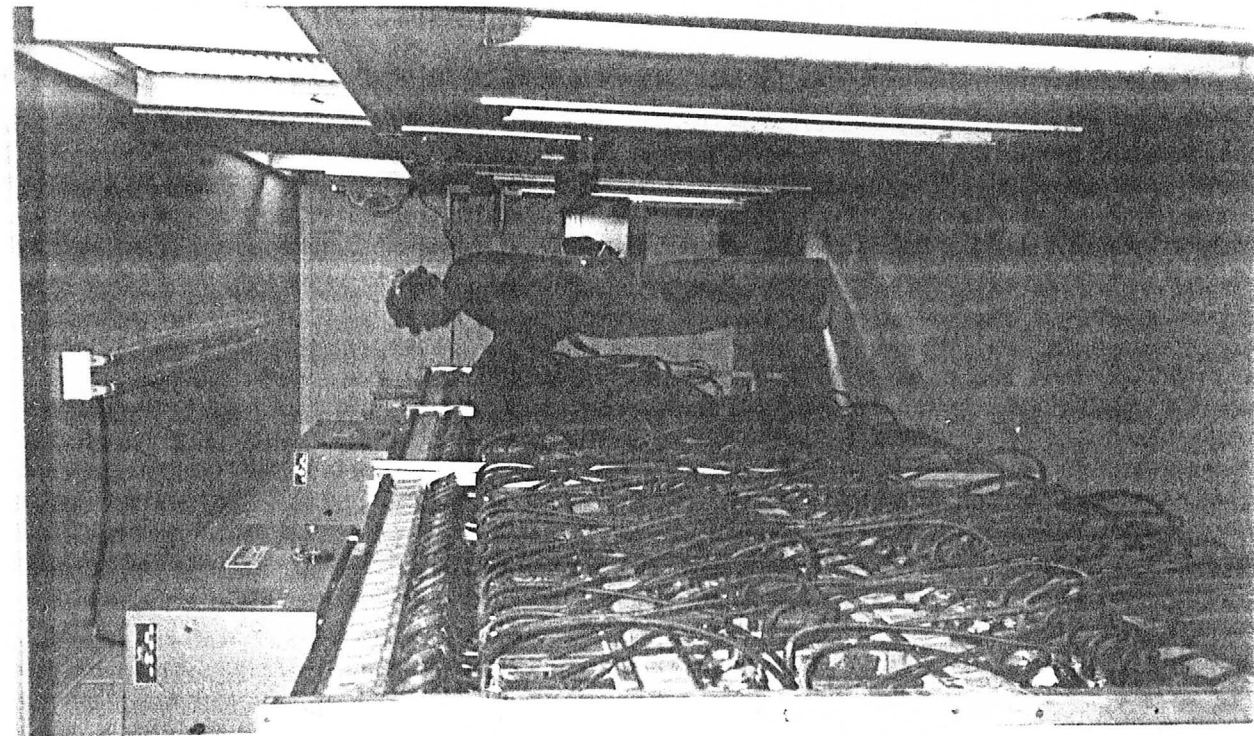












ARIZONA DEPARTMENT OF MINES AND MINERAL RESOURCES

INFORMATION FROM MINE CARDS IN MUSEUM

ARIZONA:

MM L Chalcopryite xls sphalerite

Yavapi Co.

T13N R1E Sec. 30

Gladstone Mc Cabe Mine.

Humbolt Area

#17 Big Bug

M.S.

1001B

2- AKA's

Gladstone Mc CABE (file)

COMPLETE AND MAIL TO: STATE MINE INSPECTOR
STATE MINE INSPECTOR
1624 WEST ADAMS, ROOM 200
PHOENIX, ARIZONA 85007-2606

NOV 6 1987

FOR OFFICE USE ONLY
START-UP NUMBER 74351221
STATE NUMBER 10155580
MSHA NUMBER _____

Hamm
NOTICE TO ARIZONA STATE MINE INSPECTOR

In compliance with the Arizona Revised Statute Section 27-303, we are submitting this written notice to the Arizona State Mine Inspector of our intent to start stop _____ move _____ (Please check one) ~~e-mining-operation~~. Construction of Gold Process Plant.

If this is a move, please show last location: _____
If you have not operated a mine previously in Arizona, please check here: _____ If you want the Education and Training Division to assist with your mine safety training, please check here: _____
If this operation will use Cyanide for leaching, please check here:

COMPANY NAME: Cimetta Engineering & Construction Co., Inc.

VISION: Construction

MINE OR PLANT NAME: Stan West McCabe Mine TELEPHONE: 632-5850

CHIEF OFFICER: A. Cimetta

COMPANY ADDRESS: 9800 N. Oracle Rd.

CITY: Tucson STATE: AZ ZIP CODE: 85737

MINE OR PLANT LOCATION: (Include county and nearest town, as well as directions locating property by vehicle: See attached map

TYPE OF OPERATION: C.I.P. PRINCIPAL PRODUCT: Gold

STARTING DATE: 11-1-87 CLOSING DATE: 6-1-88 DURATION: 7 months

PERSON COMPLETING NOTICE: G. Bertolani TITLE: Project Manager

DATE NOTICE MAILED TO STATE MINE INSPECTOR: 11-7-87

ABSTRACTED FROM ADMMR ACTIVE MINES DIRECTORY, 1992

Gladstone McCabe File
Yavapai County

MAGMA COPPER COMPANY

Corporate Headquarters

7400 N. Oracle Rd, Tucson, AZ 85704- Phone 575-5600
President and CEO J. Burgess Winter

MAGMA GOLD LTD.

Subsidiary of Magma Copper Company

McCabe Mine T13N R1E Sec 30

P.O. Box 460, Humboldt, AZ 86329 - Phone 632-5165 - Employees: 101 (includes 12 employees of the underground mine contractor) - Underground mine - 600 TPD flotation mill (operating 7 days, 7 days off) - Produces sulfide concentrate containing copper and precious metals.

General Manager Errol O. Anderson

Mine Superintendent Richard Pape

Senior Engineer William Hawes

Mill Group Leader Steve Recio

Purchasing Agent Larry Waugh

Manager of Accounting John T. Perry

Human Resources & Safety Ronald M. Plantz

ABSTRACTED FROM ADMMR ACTIVE MINES DIRECTORY, 1991

MAGMA GOLD LTD.

Subsidiary of Magma Copper Company

McCabe Mine T13N R1E Sec 30

P.O. Box 460, Humboldt, AZ 86329 - Phone 632-5165 - Employees: 30
(100 when in full production) - Underground mine - 600 TPD flotation
mill (operating 7 days, 7 days off) - producing sulfide concentrate
containing copper and precious metals for San Manuel smelter.

General Manager Errol O. Anderson

General Group Leader Brian E. David

Manager Technical Services Richard Pate

Senior Engineer William
Hawes

Purchasing Agent Larry
Waugh

ABSTRACTED FROM ADMMR ACTIVE MINES DIRECTORY, 1990

MAGMA GOLD LTD.

Subsidiary of Magma Copper Company

McCabe Mine T13N R1E Sec 30

P.O. Box 460, Humboldt, AZ 86329 - Phone 632-5165 - Employees: 30
(100 when in full production) - Underground mine - 600 TPD flotation
mill (operating 7 days, 7 days off) - producing sulfide concentrate
containing copper and precious metals for San Manuel smelter.

General Manager	Errol O. Anderson
General Group Leader	Brian E. David
Manager Technical Services	Richard Pate
Senior Engineer	William Hawes
Purchasing Agent	Larry Waugh

ABSTRACTED FROM ADMMR ACTIVE MINES DIRECTORY, 1988

STAN WEST MINING CORPORATION

McCabe

T13N R1E Sec. 30

P.O. Box 460, Humboldt 86329 - Phone 632-5165 - Employees 190 - Located 20 miles east of Prescott - Underground precious metal mine - Carbon in pulp cyanide mill - Capacity 500 TPD.

Chairman of Board	Frank Cerie
President	Stan Holmes
Mine Manager	Derrick May
Mine Superintendent	Howard Last
Mill Superintendent	Russell Hoar
Mine Geologist	Richard Pape

KAP WR 5/15/87: Received a call regarding an Arizona Republic article on the start up of the Stan McCabe Mine (Gladstone-McCabe - file) Yavapai County. We have apparently not seen the article, but it sounded like a rehash of the \$13 million fund raising effort to in part, start up the mine.

NJN WR 6/5/87: Pete Reblitz reported that Stan West Mining (file) has an address for the Gladstone-McCabe (file) Yavapai County, P O Box 236, Humbolt, Arizona 96329, 623-5165. The company reported that they are hiring a contractor to do the first 8 months of mining and they will assume operations themselves after that.

NJN WR 9/11/87: John Dowis, Callahan Mining, reported that Cimetta Engineering of Tucson has the construction contract for the mill at the Gladstone-McCabe (file) Yavapai county and construction is due to begin presently.

A Verbal Information Summary is attached on the program Stanly Holmes of Stan West Mining (card) gave on the Gladstone McCabe (file) Yavapai County at the Maricopa AIME meeting on February 18, 1988.

HM WR 3/18/88: It was reported that the Goldfield's Ortiz, New Mexico CIP plant was purchased by Stan West Mining and is being set up at the McCabe Mine, Yavapai County.

KAP WR 4/11/86: Received a rumor that Santa Fe Mining has dropped their involvement in the McCabe Gladstone project in Yavapai County.

NJN WR 4/18,25/86: George Rhyberg (c) reported that Santa Fe Mining (c) has pulled out of the joint venture agreement with Stan West Corp (c) on the Gladstone-McCabe (f) Yavapai County exploration and development project.

RRB WR 5/16/86: Visited the Sooner shaft at the Gladstone-McCabe. Mr. Dave Chavez who is normally the hoist man but is acting as caretaker while shut down reported that they have pulled the pumps and are allowing it to flood while they are trying to get financing or find a new partner. Santa Fe has pulled out of the deal.

KAP WR 6/27/86: Visited Santa Fe Mining Company office in Prescott to deliver a copy of the Arizona Mineral Potential Map. Rick Lawrence was continuing to log core from the company's drilling project at the Stan West properties in the immediate vicinity of the Gladstone McCabe Mine (file) Yavapai county. He explained that although Santa Fe has pulled out of the project to develop the mine they are continuing exploration on other portions of the property and were currently drilling on the Iron King Mine (file) portion of the property. Rumors are that approximately 400,000 tons of ore have been proven between the 1050 level and the 1250 level.

RRB WR 12/5/86: Scott McIntosh (c) of J. S. Redpath (c) reported that they have been retained to do a feasibility study on the Gladstone-McCabe (f) Yavapai Co. I sent him some historical data on grade and tonnage of past production.

KAP WR 5/1/87: In the company of Nyal Niemuth a visit was made to site of the Sooner Shaft on the Gladstone-McCabe (file) Yavapai County. The head frame remains as does all of the portable surface support facility buildings. Individually identified piles of what is possibly material for bulk metallurgical tests is piled on the dump.

~~DO NOT REPRODUCE~~

RRB WR 4/26/85: Frank Crierie reports that the deepening of the Sooner Shaft at the Gladstone McCabe (f) Yavapai County should begin Friday, April 26. He also reported that there are no metallurgical problems with the ore from the Gladstone-McCabe (f) and that a Canadian metallurgical consulting firm has worked out a feasible flow sheet for their mill.

NJN WR 4/19/85: Jim Weatherby reports that Rick Lawrence of Santa Fe Mining (c) is going to supervise a surface geochem survey over the Gladstone-McCabe (f) area Yavapai County with hopes of finding additional parallel zones of Mineralization.

NJN WR 5/24/85: Allan St. James (c) called and reported that Jerome Mining Co. (f) is now deunct since Sante Fe Mining will be the operator for the joint venture at the Gladstone McCabe Mine (f) Yavapai Co.

NJN WR 8/19/85: Allan St. James (c) called and reported that the Sooner shaft at the Gladstone-McCabe Mine (f) Yavapai County is now down 1320 feet. Mike Searatt of Santa Fe Mining (c) is manager of the project.

NJN WR 8/2/85: Jim Weatherby reported that the Sooner shaft (Gladstone McCabe file) is down near 1450 feet and a station established at 1400 feet. Santa Fe is currently doing underground ddrilling from that station.

NJN WR 10/11/85: Dave Starbuck with American Mine Services visited and reported that at the Gladstone-McCabe Mine (f) Yavapai County the McCabe vein has faulted off (?) above the bottom level of the Sooner shaft. Sante Fe currently has 3 drills underground searching for the offset portion.

NJN WR 11/15/85: Rick Lawrence of Sante Fe Mining reported that they have 5 drill rigs at the Gladstone-McCabe (f) exploration project. Three are on the surface and two are underground.

~~DO NOT REPRODUCE~~

GLADSTONE & MCCABE MINES

YAVAPAI COUNTY

NJN WR 4/22/83: It was reported that Jerome Mining Company is mining and stockpiling ore at the McCabe Gladstone, Yavapai County. They are still planning to construct a mill.

NJN WR 2/3/84: Beverly Everson (Morgan) reported that Stan West has shutdown their operations at the Gladstone McCabe, Yavapai County until they raise money. When they do, their next phase will probably be construction of a mill.

NJN WR 11/23/84: It was reported that regarding the recently signed option agreement between Stan West and Umetco on the Gladstone-McCabe (f) Yavapai Co. that the deal is off as Umetco has pulled out of the deal.

NJN WR 1/18/85: Allen St. James (c) reported that Sante Fe Mining (c) has signed an agreement with Stan West Mining Corp for the Gladstone-McCabe Mine (f) similar to the one which Umetco (Union Carbide) had made. Sante Fe has sampled the underground and has come up with the same and sometimes a better grade than Stan West has reported.

WR CJH 3/29/85: Eddie Martin (c) reported that a reliable source stated Sante Fe Mining (c) has contracted with American Mine Services Inc., 4705 Paris, Denver, CO 80239; phone (393) 371-9380, to work at the Sooner shaft of the Gladstone-McCabe mines, Yavapai County.

NJN WR 3/1/85: It was reported that Sante Fe Mining (c) and Stan West Corp (f) have come to an agreement on the Gladstone-McCabe Mine (f) Yavapai County. An official announcement is expected within the next 2 weeks.

JHJ Memo 5/21/85: Received telephone call from Alan St. James of Stan West. He said that Stan West has an exploration office at the mine. Mr. St. James consults for Stan West and works out of this office. The telephone number is 632-5193. Address of the Stan West Exploration Office is P O Box 8, Humbolt, Arizona 86329.

~~DO NOT REPRODUCE~~

NJN WR 9/10/82: Jack Pierce reported that the Stan West Corporation has finished their exploration effort at the Gladstone-McCabe. The final phase involved driving a drift from the new shaft on the 830 level which was used as a drilling platform. A private firm is evaluating the data prior to doing a feasibility study.

Stan Holmes has made arrangements to purchase the 350 TPD flotation mill at the McCracken Mine. (It was the Pilot Mill from Continental Materials Corp. property north of Tucson). For a ball park price of \$1,25 million. Also reported is an option for further exploration. Stan West has the right to go into the #7 shaft of the Iron King Mine on the 2,4000 level to drill a fan pattern south to seek additional targets.

Production data was received from the Bureau of Geology and Mineral Technology on the Gladstone McCabe Mine, Yavapai County. Production data is for the years 1880-1954 and was principally by Bonanza Mining Co, The McCabe-Gladstone Co., and the Ideal Mining Corporation. From a total production of 140,500 tons, the following amounts were recovered: Gold - 121,900 oz., Silver - 838,500 oz., Copper - 1,443,400 lbs., and Lead - 602,800 lbs.

RRB WR 11/26/82: Allan St. James of Jerome Mining Company reports that they are preparing to deepen the shaft and drive production drifts at the McCabe-Gladstone. They are now preparing a feasibility study.

KAP WR 12/10/82: Allan St. James, Project Manager for the McCabe-Gladstone project was in to discuss marketing of concentrates from the project. They have had a recovery test performed. As a result, they expect to produce a copper concentrate, a lead concentrate and a zinc concentrate, all of which will contain gold and silver by floatation. Further metallurgical study will be pursued in an effort to reduce the pyrite content of the concentrate without reducing precious metal recovery. A 250 ton per day mill is being considered.

MG WR 2/11/83: It is reported that the 14-ft diameter, concrete lined shaft at the Gladstone-McCabe Mine, Yavapai County, is down to 940 feet. This shaft is to be completed at 1250 feet. Plans call for three production levels and a production rate of 250 tpd. Gold and silver occurs in a copper-lead(?) -zinc ore. Reportedly 90,000 feet of drilling has been carried out.

~~DO NOT REPRODUCE~~

RRB WR 2/26/82: Mr. Jack Pierce is retained by Stan West Corporation to watch over the sinking of the shaft at the McCabe-Gladstone. He reports that it is down about half way.

NJN WR 3/12/82: Thomas J. Meir, Arizona manager for Fox and Associates, Inc. Consulting Engineers and Geologists, 3301 E. Madison, Phoenix, Arizona 85034, phone 244-8197, visited. He said they will be doing a groundwater analysis and preliminary siting for a tailings impoundment and mill building for Jerome Mining at the Gladstone McCabe, Yavapai County.

RRB WR 3/19/82: Don Clark of Fox & Associates, 3301 E. Madison 244-8197, reports that they have been retained to do geological, geophysical and feasibility studies on the McCabe-Gladstone project for Jerome Mining Company. He was inquiring into permits required.

~~DO NOT REPRODUCE~~

Production to 1926 \$3,000,000 gold, major metal - J. W. Still's figures
(correspondence file)

R. J. Allison and partner was receiving prices on mill equipment from Jack Pierce at Iron King. Allison has drill working about 1½ miles south of the Iron King and has several properties tied up - Gladstone & McCabe etc. No information on what they are finding. FTJ WR 7-18-69

RRB WR 6/5/81: Frank Crierie, Stan West Mining Corp. reports that drilling on the Stan-McCabe group looks good. They've got assays of .25 to 1.00 oz. of gold over 5 ft. widths. They expect to make a decision in August as to what to do next but expect to pump it out and go underground for extensive drilling. They have spent \$6 million so far. Another \$2.1 Million has been raised for drilling on the Swastika property. He reports that they are making a new prospectus and that he will send us a copy when it is completed. He also reports that they are in the process of buying two more properties that he will tell us about when the deal is closed. Also they are interested in acquiring other promising properties if any are available.

--
NJN WR 9/11/81: Scott Norris, Financial Officer of Stan West Corporation, 2701 E. Camelback, Suite 260, Phoenix, Arizona 85016, reported they are dewatering and sinking an exploration shaft at the Gladstone-McCabe.

+
RRB WR 10/23/81: Allan St. James of Jerome Mining called to ask for suggestions on how to speed up the process of getting an NPDES permit from EPA through the Department of Health Services. He said that they had already come to terms with the Department of Water Resources because they are about one mile outside the Active Water Management Area. I suggested that he work through his congressman and legislator. He reports that they are preparing to sink a 14 foot concrete lined shaft at the Gladstone-McCabe 1000 foot or deeper. American Mine Services will sink the shaft. They have bought the head frame from the ASARCO Sacaton Unit at Casa Grande. They are now leveling the site and moving in trailers and equipment and should collar the shaft next month.

CJH WR 1/29/82: 1/29/82: Don West, Sales Engineer, Joy Manufacturing Co, 8710 E. Devesonshire, Scottsdale, AZ 85251, Tel: 947-1703. Because of the slump in Cu operations, Mr. West wants to explore the small mine equipment market. Suggested Tombstone and White Hills (Arizona Silver). He reported that the Jerome Mining Co., a wholly owned subsidiary of Stan West Inc. has contracted American Mine Services of Denver to sink a shaft adjoining Iron King property at Mayer. Also mentioned was that the Sacaton (ASARCO) head from has been moved to this site. This will be a gold operation (see Page 5, The Mining Record, Jan. 13, 1982.

~~DO NOT REPRODUCE~~