



CONTACT INFORMATION

Mining Records Curator
Arizona Geological Survey
1520 West Adams St.
Phoenix, AZ 85007
602-771-1601
<http://www.azgs.az.gov>
inquiries@azgs.az.gov

The following file is part of the

Arizona Department of Mines and Mineral Resources Mining Collection

ACCESS STATEMENT

These digitized collections are accessible for purposes of education and research. We have indicated what we know about copyright and rights of privacy, publicity, or trademark. Due to the nature of archival collections, we are not always able to identify this information. We are eager to hear from any rights owners, so that we may obtain accurate information. Upon request, we will remove material from public view while we address a rights issue.

CONSTRAINTS STATEMENT

The Arizona Geological Survey does not claim to control all rights for all materials in its collection. These rights include, but are not limited to: copyright, privacy rights, and cultural protection rights. The User hereby assumes all responsibility for obtaining any rights to use the material in excess of "fair use."

The Survey makes no intellectual property claims to the products created by individual authors in the manuscript collections, except when the author deeded those rights to the Survey or when those authors were employed by the State of Arizona and created intellectual products as a function of their official duties. The Survey does maintain property rights to the physical and digital representations of the works.

QUALITY STATEMENT

The Arizona Geological Survey is not responsible for the accuracy of the records, information, or opinions that may be contained in the files. The Survey collects, catalogs, and archives data on mineral properties regardless of its views of the veracity or accuracy of those data.

ARIZONA DEPARTMENT OF MINES AND MINERAL RESOURCES AZMILS DATA

PRIMARY NAME: GILA CITY PLACERS

ALTERNATE NAMES:

 DOME PLACERS
 MONITOR GULCH

YUMA COUNTY MILS NUMBER: 716

LOCATION: TOWNSHIP 8 S RANGE 21 W SECTION 1 QUARTER --
LATITUDE: N 32DEG 45MIN 35SEC LONGITUDE: W 114DEG 22MIN 08SEC
TOPO MAP NAME: DOME - 7.5 MIN

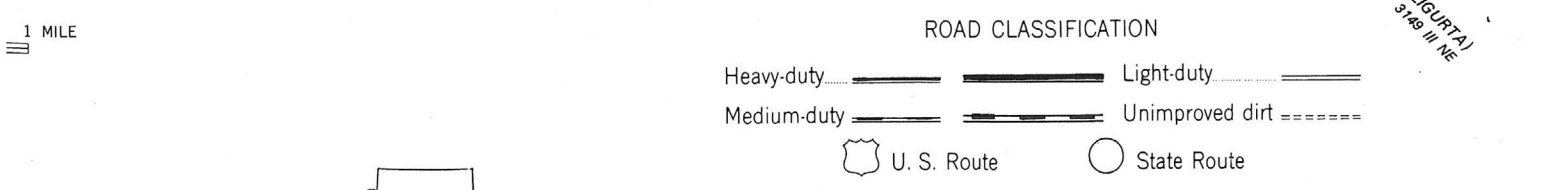
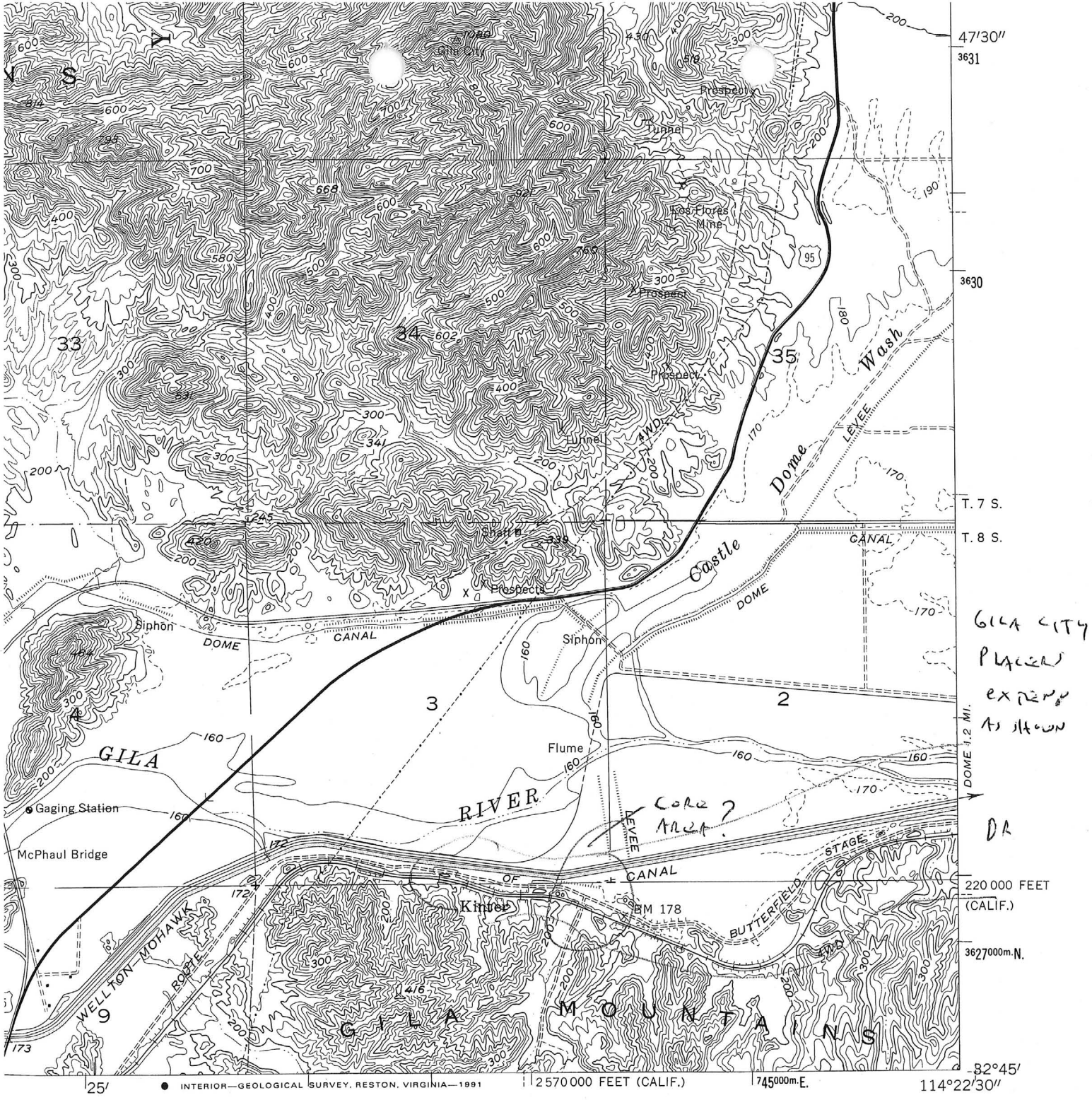
CURRENT STATUS: PAST PRODUCER

COMMODITY:

 GOLD PLACER

BIBLIOGRAPHY:

 ADMMR GILA CITY PLACERS FILE
 ADMMR "U" FILE, YUMA AU11
 AZBM BULL 168, P 18-21
 AZBM BULL 134, P 208-210
 AZBM BULL 160, P 18-21
 AZBM BULL 140, P 104
 AZBM BULL 142, P 16-19



QUADRANGLE LOCATION

LAGUNA DAM, ARIZ.—CALIF.

32114-G4-TF-024

1955
 PHOTOREVISED 1979
 DMA 3149 IV SW—SERIES V898

092

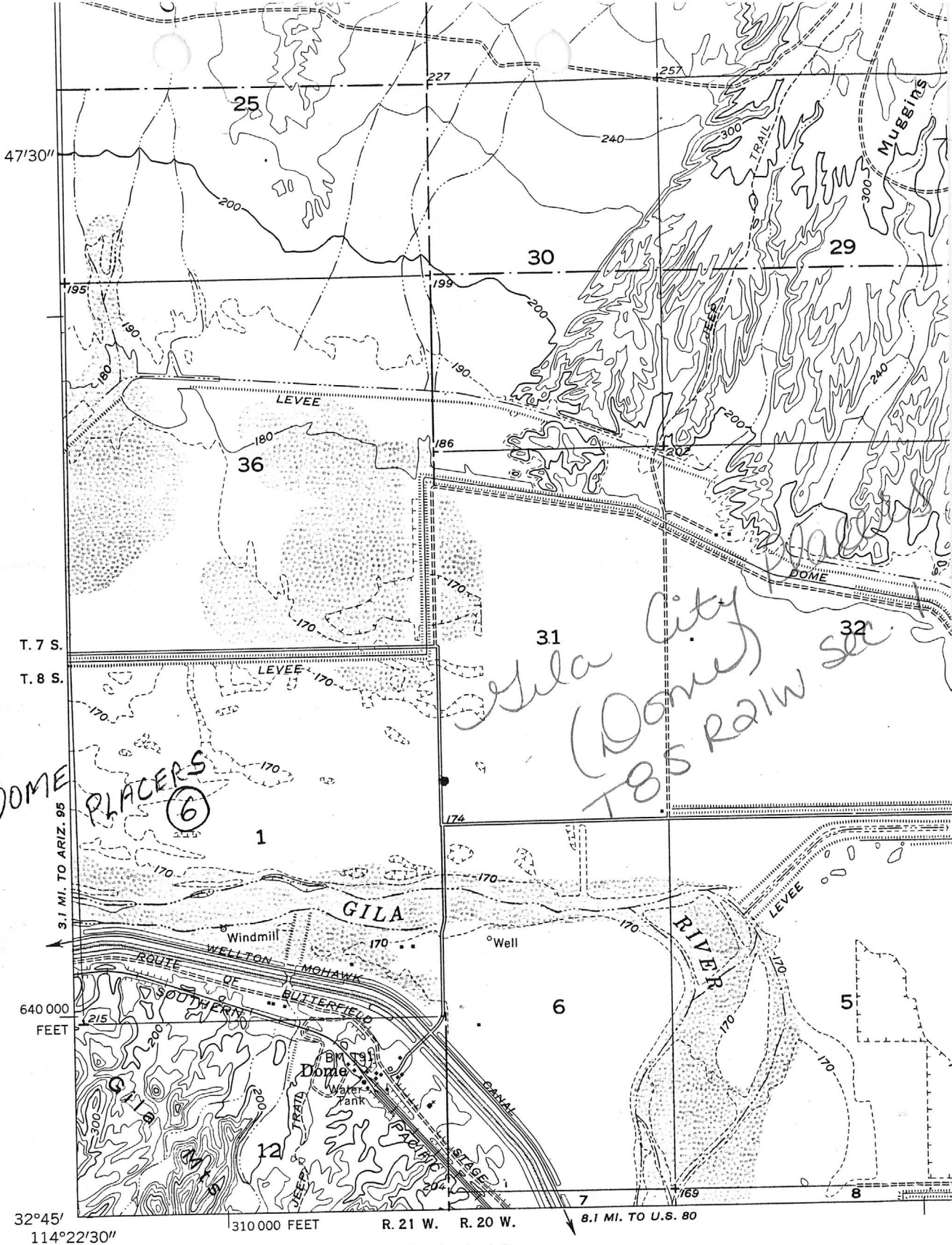
Revisions shown in purple and woodland compiled from aerial photographs taken 1976 and other source data. This information not field checked. Map edited 1979

GILA CITY
 PLACES
 EXPANSION
 AS SHOWN

CORE
 AREA?

DR

(LIGURTA)
 3149 III, NE



(FORTUNA 1:62 500)

Mapped, edited, and published by the Geological Survey

Control by USGS and USC&GS

Topography from aerial photographs by Kelsh plotter and from plane-table surveys by USBR 1936-1941
 Aerial photographs taken 1953. Field check 1955

Polyconic projection. 1927 North American datum
 10,000-foot grid based on Arizona coordinate system, west zone

Dome, 7.5'

TRUE NORTH
 MAGNETIC NORTH

APPROXIMATE MEAN DECLINATION, 1955

VIS6.3

ARIZONA DEPARTMENT OF MINES AND MINERAL RESOURCES

VERBAL INFORMATION SUMMARY

1. Information from: **Randy McElhane**
Company: **Gila City Resources**
Address: **32890 E. County 7th Street**
Wellton, AZ 85336
2. Phone: **(602) 785-4574**
3. Mine: **Gila City Placers**
4. ADMMR Mine File: **Same**
5. County: **Yuma** MILS Number: **716**
6. Summary of information received, comments, etc.:

Mr. McElhane said he and his associates are going to incorporate as Gila City Resources. They have control of the property and are in the permitting process. In addition to gold they expect to produce tantalite, magnetite, and later possibly silica sand.

Date: 4/24/91

Richard R. Beard, Mining Engineer

