



CONTACT INFORMATION

Mining Records Curator
Arizona Geological Survey
1520 West Adams St.
Phoenix, AZ 85007
602-771-1601
<http://www.azgs.az.gov>
inquiries@azgs.az.gov

The following file is part of the

Arizona Department of Mines and Mineral Resources Mining Collection

ACCESS STATEMENT

These digitized collections are accessible for purposes of education and research. We have indicated what we know about copyright and rights of privacy, publicity, or trademark. Due to the nature of archival collections, we are not always able to identify this information. We are eager to hear from any rights owners, so that we may obtain accurate information. Upon request, we will remove material from public view while we address a rights issue.

CONSTRAINTS STATEMENT

The Arizona Geological Survey does not claim to control all rights for all materials in its collection. These rights include, but are not limited to: copyright, privacy rights, and cultural protection rights. The User hereby assumes all responsibility for obtaining any rights to use the material in excess of "fair use."

The Survey makes no intellectual property claims to the products created by individual authors in the manuscript collections, except when the author deeded those rights to the Survey or when those authors were employed by the State of Arizona and created intellectual products as a function of their official duties. The Survey does maintain property rights to the physical and digital representations of the works.

QUALITY STATEMENT

The Arizona Geological Survey is not responsible for the accuracy of the records, information, or opinions that may be contained in the files. The Survey collects, catalogs, and archives data on mineral properties regardless of its views of the veracity or accuracy of those data.

ARIZONA DEPARTMENT OF MINES AND MINERAL RESOURCES AZMILS DATA

PRIMARY NAME: GIBSON MINE

ALTERNATE NAMES:

BELLEVUE-OLD SITE
KUNO PROPERTY
CLAIMS MS 2219
SUMMIT PROPERTY
REYNOLDS GROUP
PASQUALE GROUP

GILA COUNTY MILS NUMBER: 87B

LOCATION: TOWNSHIP 1 S RANGE 14 E SECTION 21 QUARTER W2
LATITUDE: N 33DEG 19MIN 40SEC LONGITUDE: W 110DEG 56MIN 45SEC
TOPO MAP NAME: PINAL RANCH - 7.5 MIN

CURRENT STATUS: PAST PRODUCER

COMMODITY:

COPPER SULFIDE
COPPER OXIDE
SILVER
GOLD
BERYLLIUM

BIBLIOGRAPHY:

ADMMR GIBSON MINE FILE
ADMMR TUCSON-GLOBE GROUP FILE (VARIOUS RPTS)
RANSOME F L GEO GLOBE CU DIST USGS PP 12 1903
P 162
AZ MNG JRL NOV 1919 P 46, ABM BULL 180 P 105
PETERSON N P GEOL PINAL RANCH QUAD USGS 1141-
H 1963 P H11-H13
STEVENS S J CU HANDBOOK VOL 10 1911 P1618-162

3 of 5



Forrester Keir
Black Out
Face 6% Est. 20m Ton Approx.



2 - Heaps - Approx 25,000 TON
For Leaching

(2.)



2 Wells - Drilled to 265'



Acid Tank & Dump



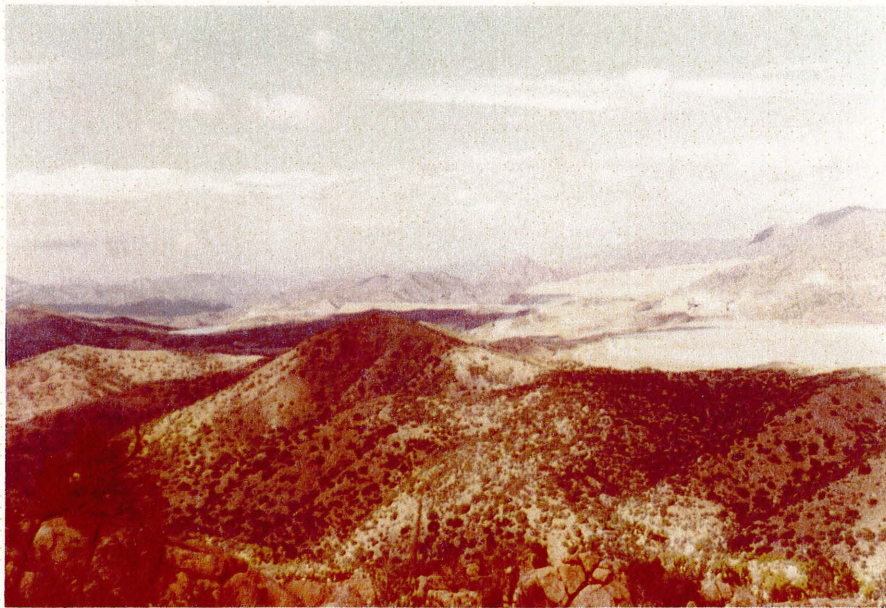
Holding Pond

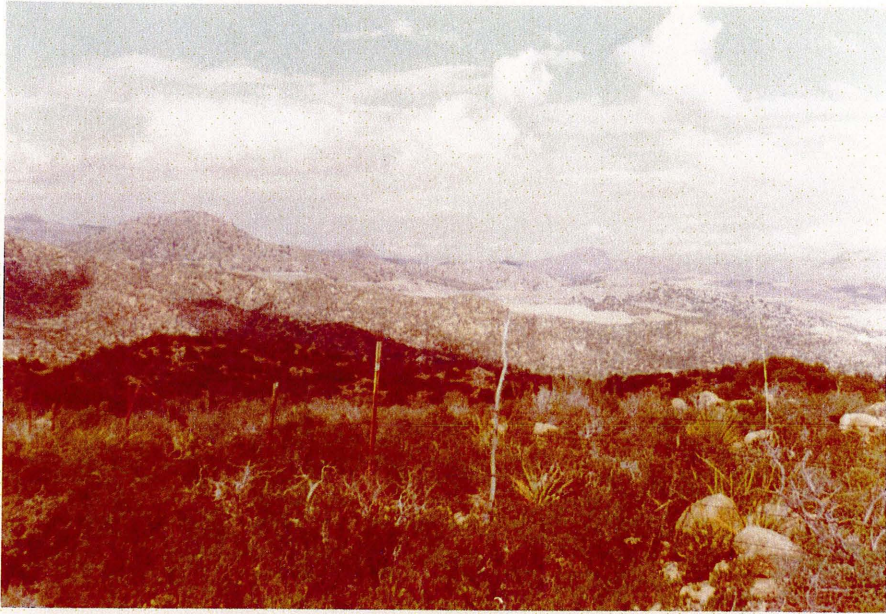


Part of Ore Res.

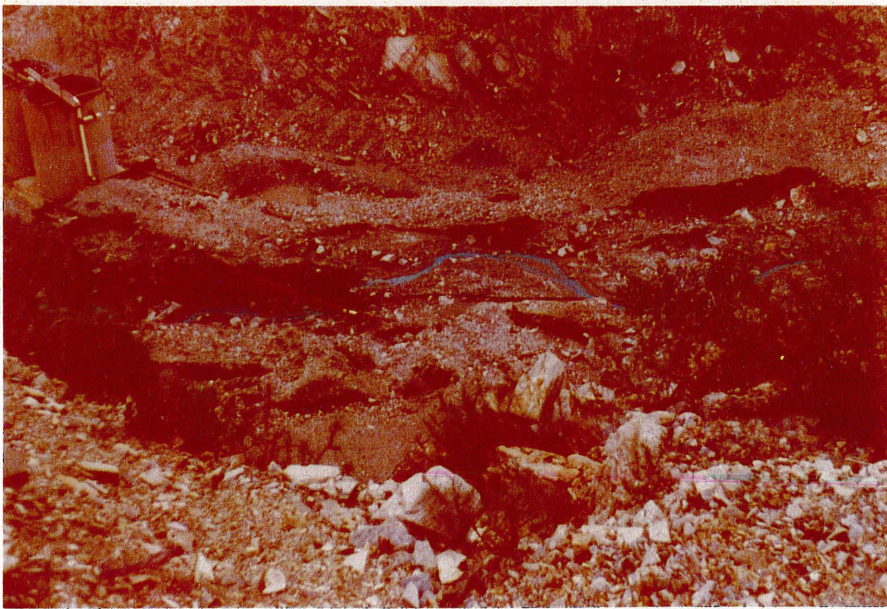


Vertical Cells on Mineral
Creek





Holding Pond & Whim Shaft.



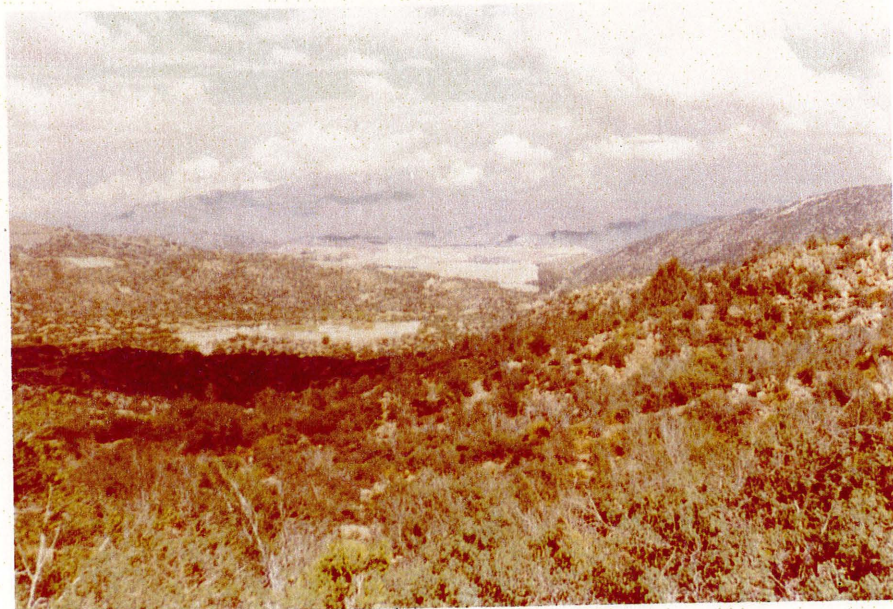
Headwaters of Mineral Creek
Flows thru the Ray Pit

7.)

Gibson Mine Gila



Pinto Valley Mine



In operation OX Hide
& Bluebird Mines



Part of Ore Res.

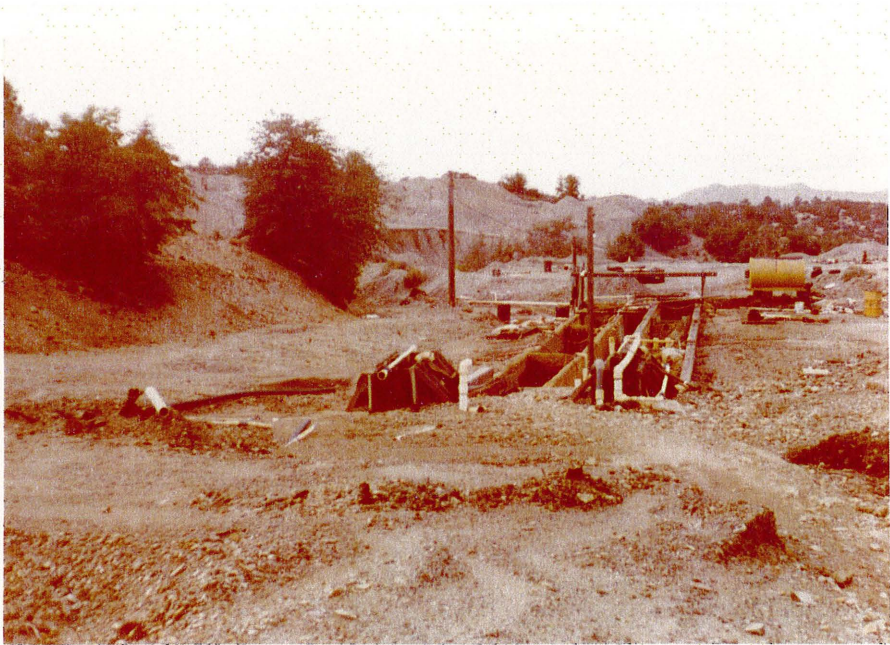




Part of Ore Res.

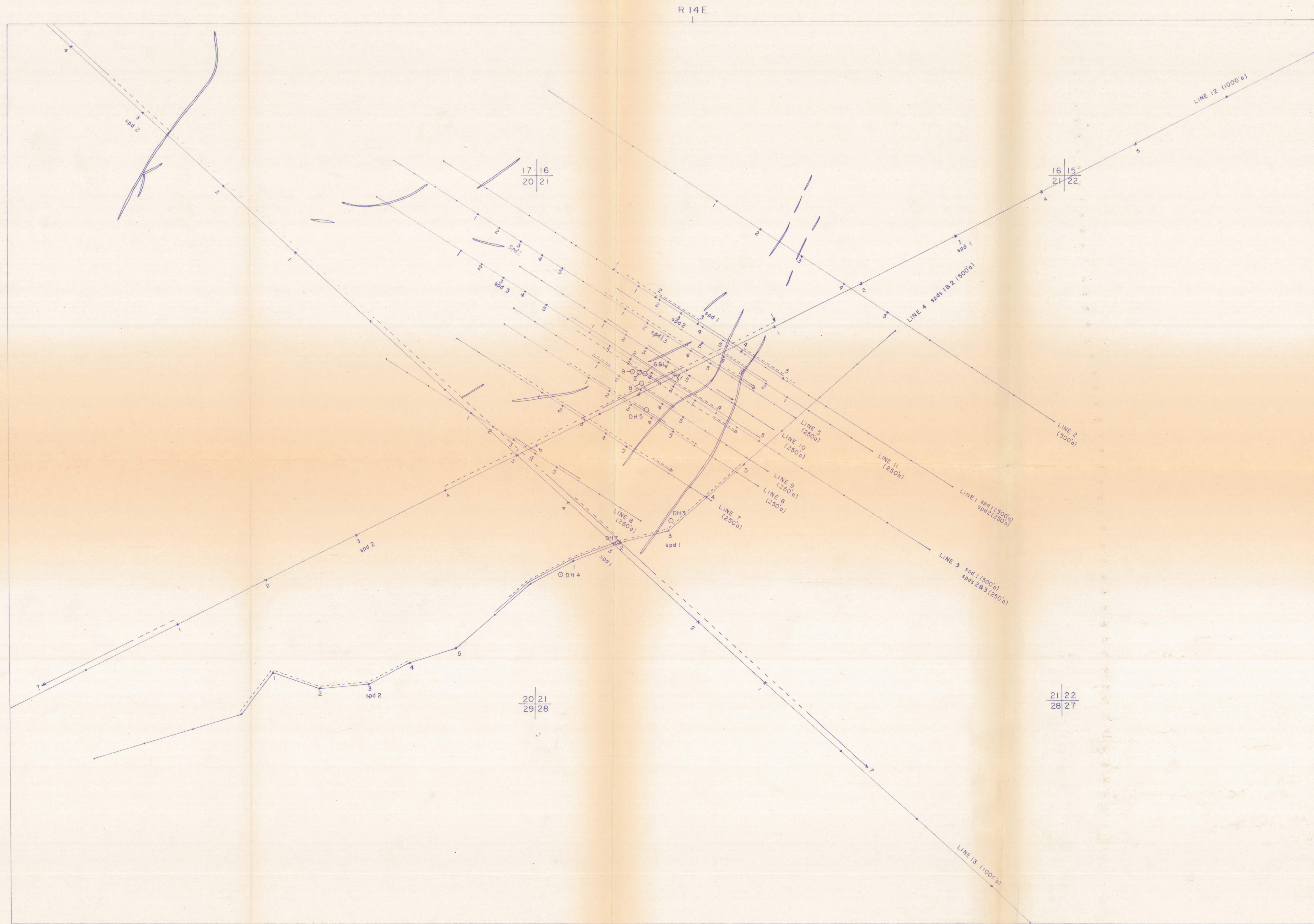


Pads - Drilled & Blasted in 1969
for in Place Leaching



Vertical Cells.

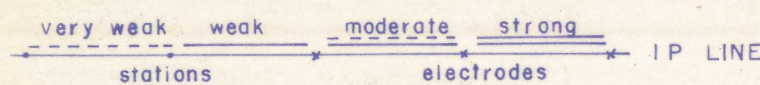





EXPLANATION

- Veins
- Drill hole, Unsurveyed
- I P line with illustrated interpretation
- Section corner

RELATIVE ANOMALY STRENGTH





HEINRICH'S GEOEXPLORATION CO.
POST OFFICE BOX 5671, TUCSON, ARIZONA, 85703

INDUCED POLARIZATION LOCATION &
INTERPRETATION PLAN
GIBSON FOR PROPERTY

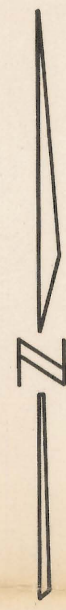
PAUL KAYSER

Scale 1" = 500' Date 4/18/67

R. 14 E.

819
17116

9110
16115



17116
20121

16117
21222

KY-3

KY-4

GEOEX 13

2012
2928

21122
2827

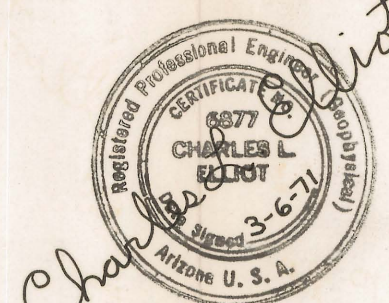
T. 1 S.

KY-6

KY-5

LEGEND

- APPROXIMATE PROPERTY BOUNDARY
- IP SURVEY LINES - 1971
- IP SURVEY LINES - 1966-1970
- IP ANOMALOUS ZONE
- RECOMMENDED DRILL HOLE



ELLIOT GEOPHYSICAL COMPANY
Mining Geophysical Engineers
Tucson, Arizona





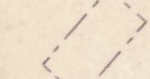
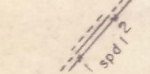
INTERPRETATION OVERLAY INDUCED POLARIZATION-RESISTIVITY DATA

GIBSON PROPERTY
GILA COUNTY, ARIZONA
FOR
MR. PAUL KAYSER

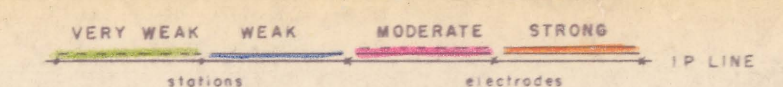
SCALE: 1" = 500' MARCH, 1971




EXPLANATION

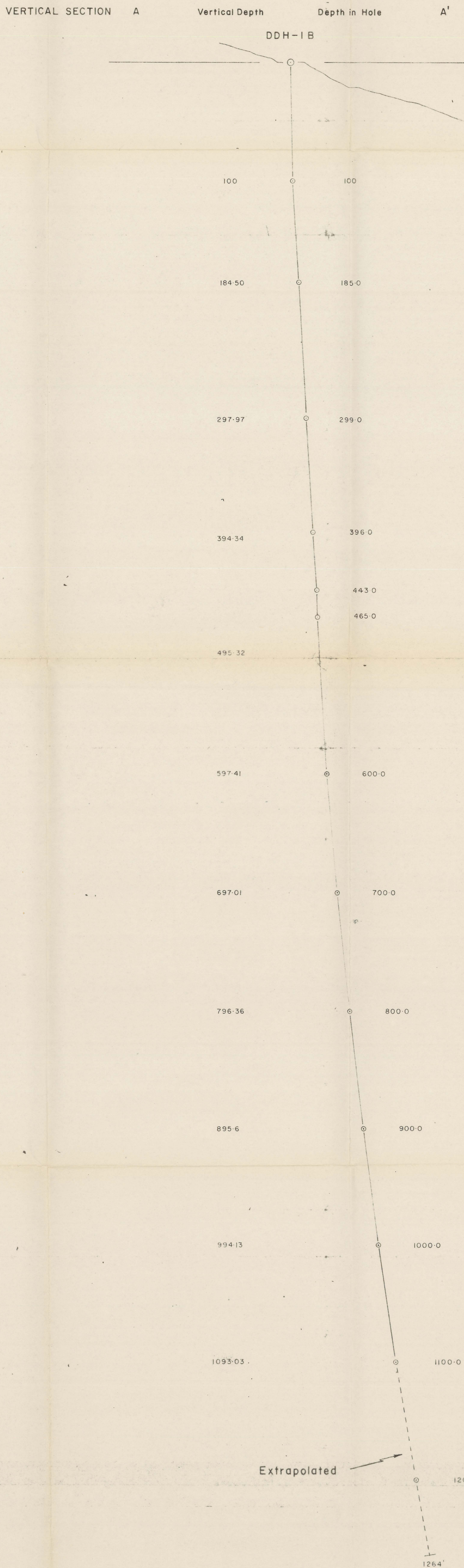
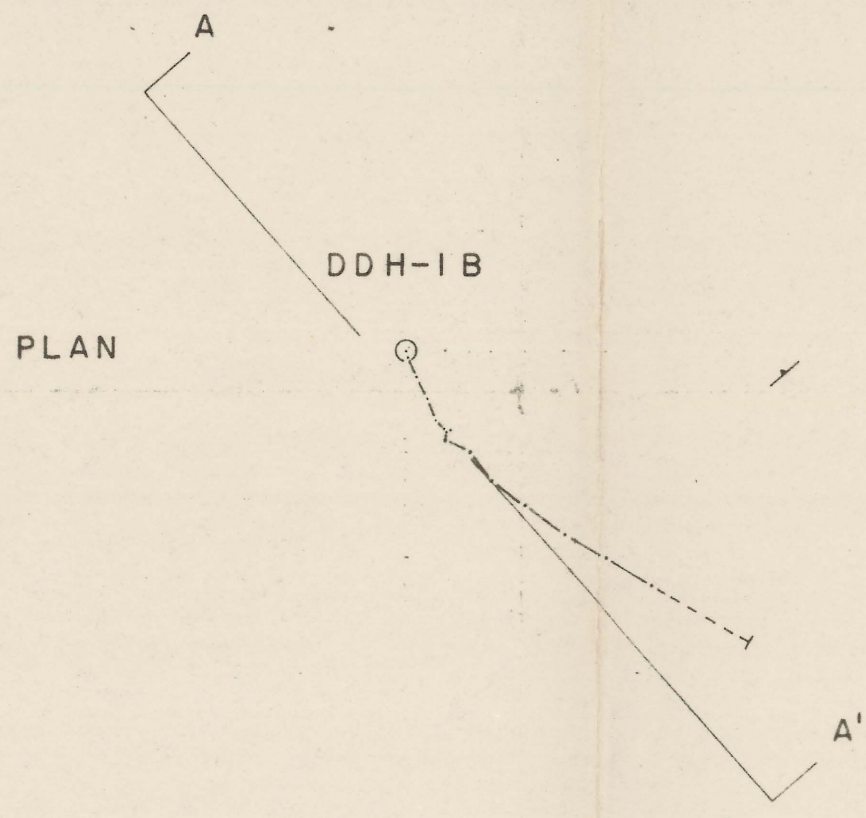
-  Veins
-  DH Drill hole, Unsurveyed
-  Dozer road
-  Patented claim
-  Unpatented claim
-  I.P. line with illustrated interpretation, electrode no., & spread no.

RELATIVE ANOMALY STRENGTH



N
↑
Pinal Co. Ariz.

 HEINRICH'S GEOEXPLORATION CO. POST OFFICE BOX 5571, TUCSON, ARIZONA 85703	
COMPOSITE MAP	
GIBSON	
FOR	
PAUL KAYSER	
Scale 1" = 500'	Date 2/20/67



GIBSON PROPERTY
Miami District, Gila County, Arizona.
Plan and Section of DDH Gibson I-B
Showing the Calculated Course.

Scale: 1 inch equals 50 feet.