



CONTACT INFORMATION

Mining Records Curator
Arizona Geological Survey
1520 West Adams St.
Phoenix, AZ 85007
602-771-1601
<http://www.azgs.az.gov>
inquiries@azgs.az.gov

The following file is part of the

Arizona Department of Mines and Mineral Resources Mining Collection

ACCESS STATEMENT

These digitized collections are accessible for purposes of education and research. We have indicated what we know about copyright and rights of privacy, publicity, or trademark. Due to the nature of archival collections, we are not always able to identify this information. We are eager to hear from any rights owners, so that we may obtain accurate information. Upon request, we will remove material from public view while we address a rights issue.

CONSTRAINTS STATEMENT

The Arizona Geological Survey does not claim to control all rights for all materials in its collection. These rights include, but are not limited to: copyright, privacy rights, and cultural protection rights. The User hereby assumes all responsibility for obtaining any rights to use the material in excess of "fair use."

The Survey makes no intellectual property claims to the products created by individual authors in the manuscript collections, except when the author deeded those rights to the Survey or when those authors were employed by the State of Arizona and created intellectual products as a function of their official duties. The Survey does maintain property rights to the physical and digital representations of the works.

QUALITY STATEMENT

The Arizona Geological Survey is not responsible for the accuracy of the records, information, or opinions that may be contained in the files. The Survey collects, catalogs, and archives data on mineral properties regardless of its views of the veracity or accuracy of those data.

PRINTED: 02-04-2013

ARIZONA DEPARTMENT OF MINES AND MINERAL RESOURCES AZMILS DATA

PRIMARY NAME: GERALLS FLAGSTSTONE QUARRY

ALTERNATE NAMES:

GILA COUNTY MILS NUMBER: 591

LOCATION: TOWNSHIP 12 N RANGE 9 E SECTION 24 QUARTER
LATITUDE: N 34DEG 22MIN 57SEC LONGITUDE: W 111DEG 25MIN 24SEC
TOPO MAP NAME: PINE - 7.5 MIN

CURRENT STATUS: PAST PRODUCER

COMMODITY:
STONE FLAGSTONE

BIBLIOGRAPHY:
ADMMR GERALLS FLAGSTONE QUARRY FILE

(A) P. 11. 7

DEPARTMENT OF MINERAL RESOURCES
STATE OF ARIZONA
FIELD ENGINEERS REPORT

Mine Geralls Flagstone

Date December 13, 1960

District Spring Valley Dist., Gila County

Engineer Lewis A. Smith

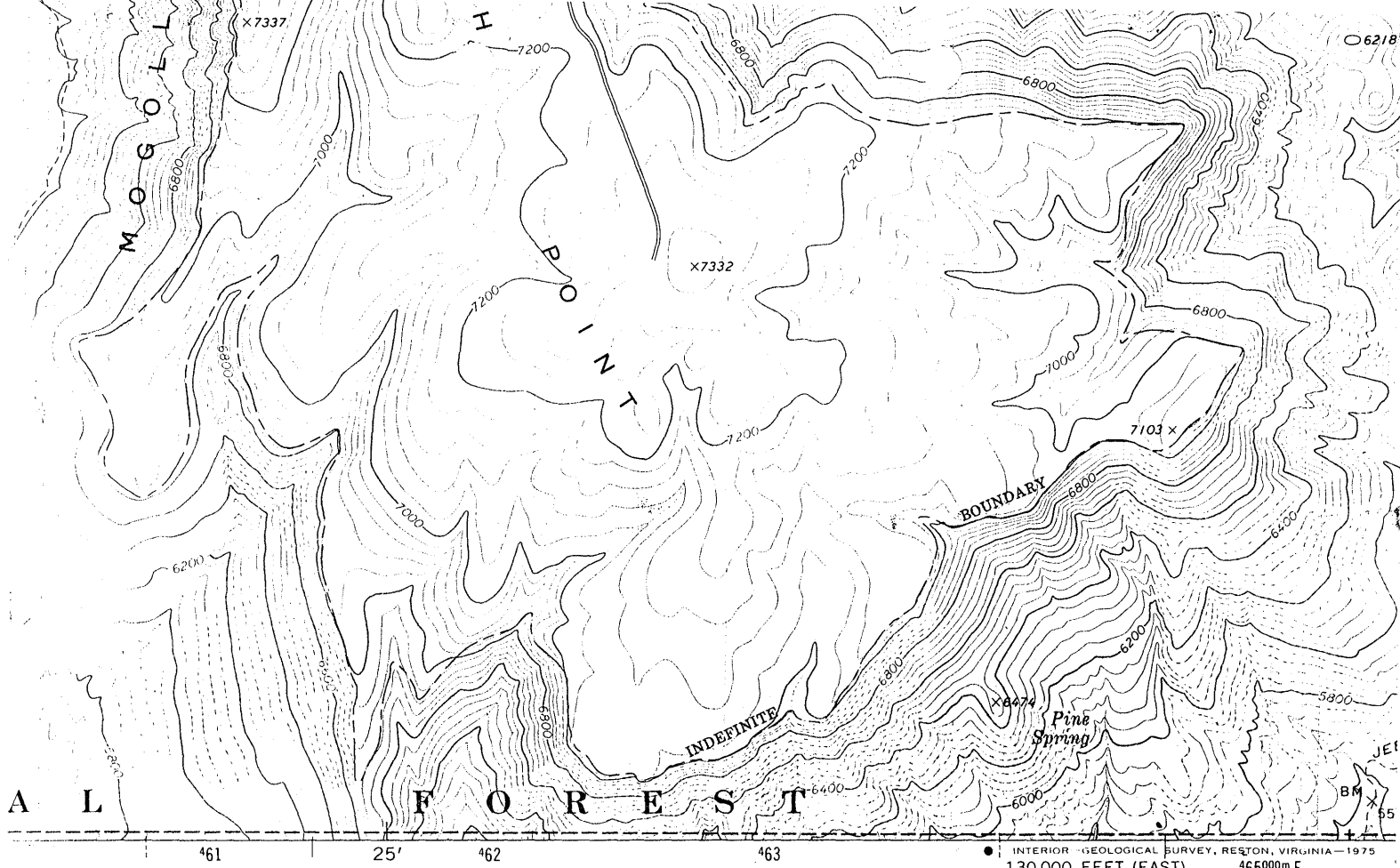
Subject: Interview with C. V. Odem.

Location: Sec. 32, T 12 N, R 9 E (3 miles SE of Pine on the SW slope of Milk Ranch Point, $1\frac{1}{2}$ miles east of Pine-Payson road).

Samuel Barnet (?)
Owner: Stanley Geralls, Payson, Arizona *Mail Rd. "unknown" 12-28-60*

Work: A small quarry was established and some rock sold for building trim and walls locally.

The Coconino sandstone is variable in bedding thickness and has various shades of red coloring. The colored rock is in a belt immediately below the basalt capping which rock probably caused the discoloration from a normally buff rock.



1 MILE
0 6000 7000 FEET
0 1 KILOMETER

1929

STANDARDS
225, OR RESTON, VIRGINIA 22092
5 AVAILABLE ON REQUEST



QUADRANGLE LOCATION

ROAD CLASSIFICATION

Primary highway, hard surface	Light-duty road, hard or improved surface
Secondary highway, hard surface	Unimproved road
Interstate Route	U. S. Route
	State Route

PINE, ARIZ
NW/4 PINE 15' QUADRA
N3422.5—W11122.5

1973