



CONTACT INFORMATION

Mining Records Curator
Arizona Geological Survey
1520 West Adams St.
Phoenix, AZ 85007
602-771-1601
<http://www.azgs.az.gov>
inquiries@azgs.az.gov

The following file is part of the

Arizona Department of Mines and Mineral Resources Mining Collection

ACCESS STATEMENT

These digitized collections are accessible for purposes of education and research. We have indicated what we know about copyright and rights of privacy, publicity, or trademark. Due to the nature of archival collections, we are not always able to identify this information. We are eager to hear from any rights owners, so that we may obtain accurate information. Upon request, we will remove material from public view while we address a rights issue.

CONSTRAINTS STATEMENT

The Arizona Geological Survey does not claim to control all rights for all materials in its collection. These rights include, but are not limited to: copyright, privacy rights, and cultural protection rights. The User hereby assumes all responsibility for obtaining any rights to use the material in excess of "fair use."

The Survey makes no intellectual property claims to the products created by individual authors in the manuscript collections, except when the author deeded those rights to the Survey or when those authors were employed by the State of Arizona and created intellectual products as a function of their official duties. The Survey does maintain property rights to the physical and digital representations of the works.

QUALITY STATEMENT

The Arizona Geological Survey is not responsible for the accuracy of the records, information, or opinions that may be contained in the files. The Survey collects, catalogs, and archives data on mineral properties regardless of its views of the veracity or accuracy of those data.

PRINTED: 02/20/2003

ARIZONA DEPARTMENT OF MINES AND MINERAL RESOURCES AZMILS DATA

PRIMARY NAME: GENIE CLAIMS

ALTERNATE NAMES:
BMS MINE

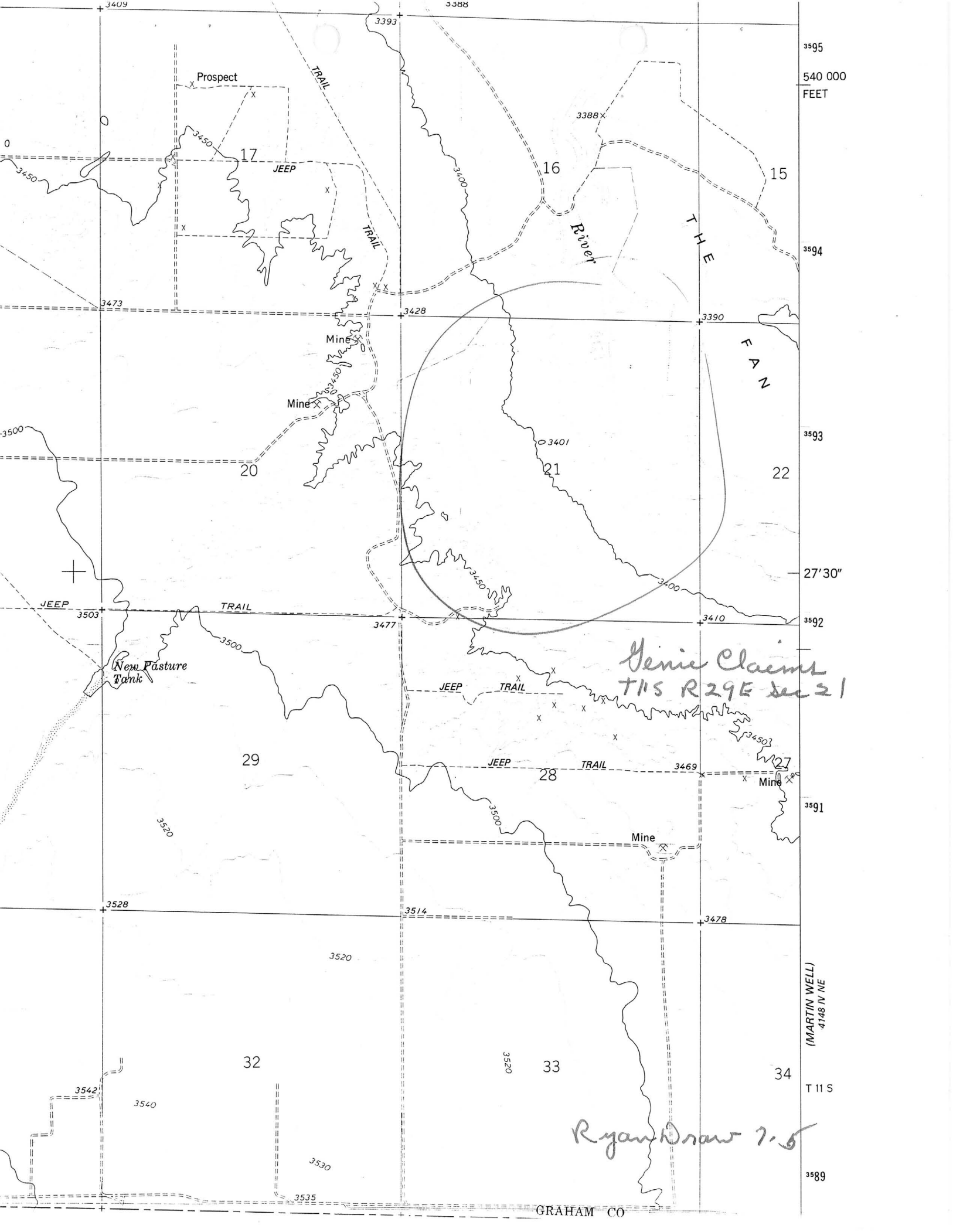
GRAHAM COUNTY MILS NUMBER: 270

LOCATION: TOWNSHIP 11 S RANGE 29 E SECTION 21 QUARTER C
LATITUDE: N 32DEG 27MIN 51SEC LONGITUDE: W 109DEG 23MIN 20SEC
TOPO MAP NAME: BOWIE - 15 MIN

CURRENT STATUS: EXP PROSPECT

COMMODITY:
ZEOLITES

BIBLIOGRAPHY:
ADMMR GENIE CLAIMS FILE
BLM AMC FILE 56580
UNPAT. CLAIMS EXTEND INTO SEC. 18
ANACONDA OWNS A PORTION OF GENIE CLAIMS IN
SEC. 28,
UNPAT. CLAIMS EXTEND INTO SEC. 13, 14, 18 OF
T11S-R28E



GENIE CLAIMS

GRAHAM COUNTY

NJN WR 4/24/87: Ted Eyde (card) reports that the BMS Mine (Genie Claims - file) Graham County, has intermittent production of zeolites (chabazite) and is owned by Al Letcher, P O Box 107, Lancaster, California 93534.
