



CONTACT INFORMATION

Mining Records Curator
Arizona Geological Survey
1520 West Adams St.
Phoenix, AZ 85007
602-771-1601
<http://www.azgs.az.gov>
inquiries@azgs.az.gov

The following file is part of the

Arizona Department of Mines and Mineral Resources Mining Collection

ACCESS STATEMENT

These digitized collections are accessible for purposes of education and research. We have indicated what we know about copyright and rights of privacy, publicity, or trademark. Due to the nature of archival collections, we are not always able to identify this information. We are eager to hear from any rights owners, so that we may obtain accurate information. Upon request, we will remove material from public view while we address a rights issue.

CONSTRAINTS STATEMENT

The Arizona Geological Survey does not claim to control all rights for all materials in its collection. These rights include, but are not limited to: copyright, privacy rights, and cultural protection rights. The User hereby assumes all responsibility for obtaining any rights to use the material in excess of "fair use."

The Survey makes no intellectual property claims to the products created by individual authors in the manuscript collections, except when the author deeded those rights to the Survey or when those authors were employed by the State of Arizona and created intellectual products as a function of their official duties. The Survey does maintain property rights to the physical and digital representations of the works.

QUALITY STATEMENT

The Arizona Geological Survey is not responsible for the accuracy of the records, information, or opinions that may be contained in the files. The Survey collects, catalogs, and archives data on mineral properties regardless of its views of the veracity or accuracy of those data.

PRINTED: 10-15-2012

ARIZONA DEPARTMENT OF MINES AND MINERAL RESOURCES AZMILS DATA

PRIMARY NAME: FLYING DUTCHMAN

ALTERNATE NAMES:

YAVAPAI COUNTY MILS NUMBER: 1439

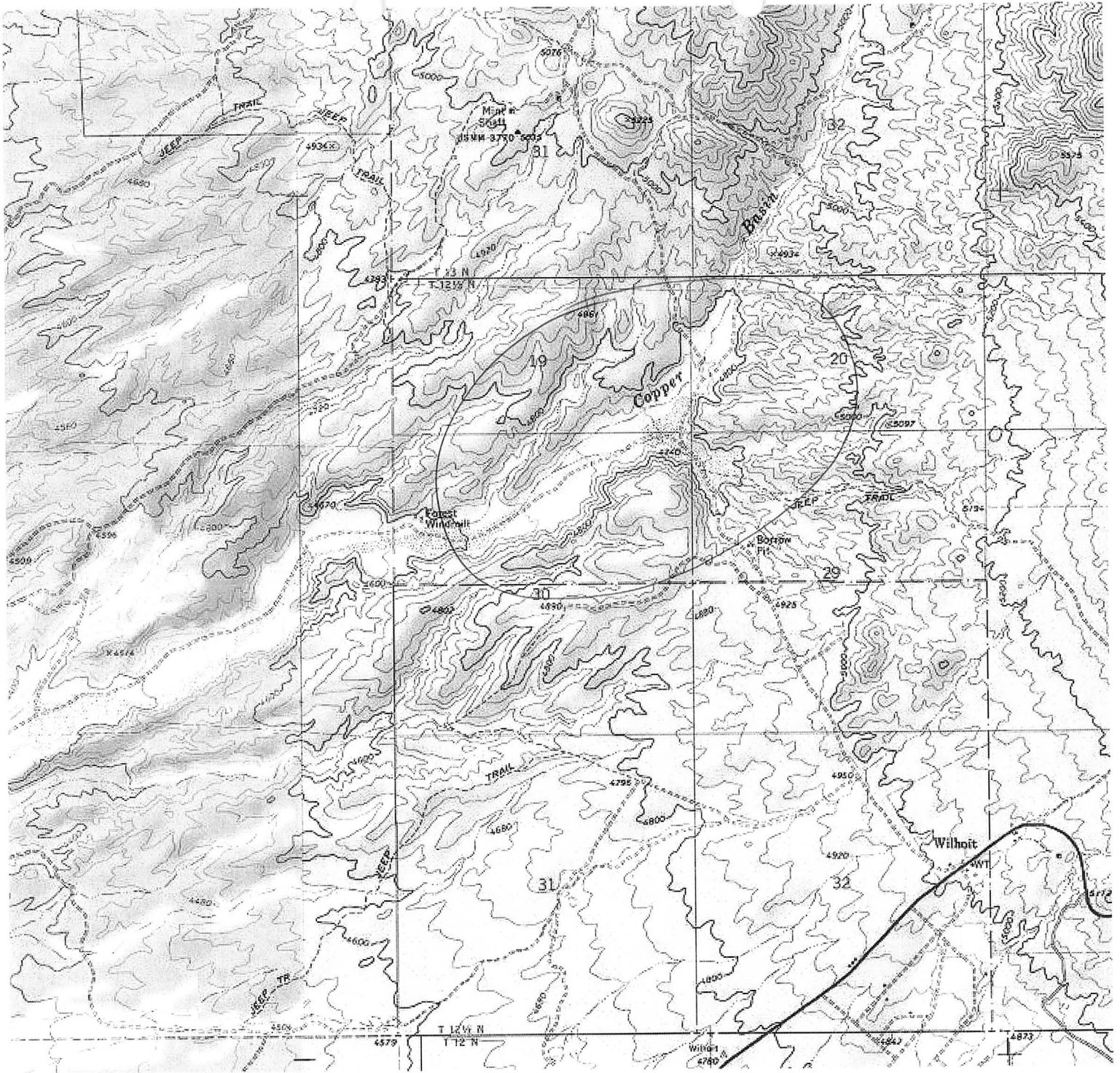
LOCATION: TOWNSHIP 12.5N RANGE 3 W SECTION 30 QUARTER
LATITUDE: N 34DEG 26MIN 39SEC LONGITUDE: W 112DEG 36MIN 38SEC
TOPO MAP NAME: WILHOIT - 7.5 MIN

CURRENT STATUS: OTHER

COMMODITY:

BIBLIOGRAPHY:

ADMMR FLYING DUTCHMAN FILE
CLAIMS EXTEND INTO 19



Flying Dutchman

T12N R3W S⁵nc. 30 & 19
A

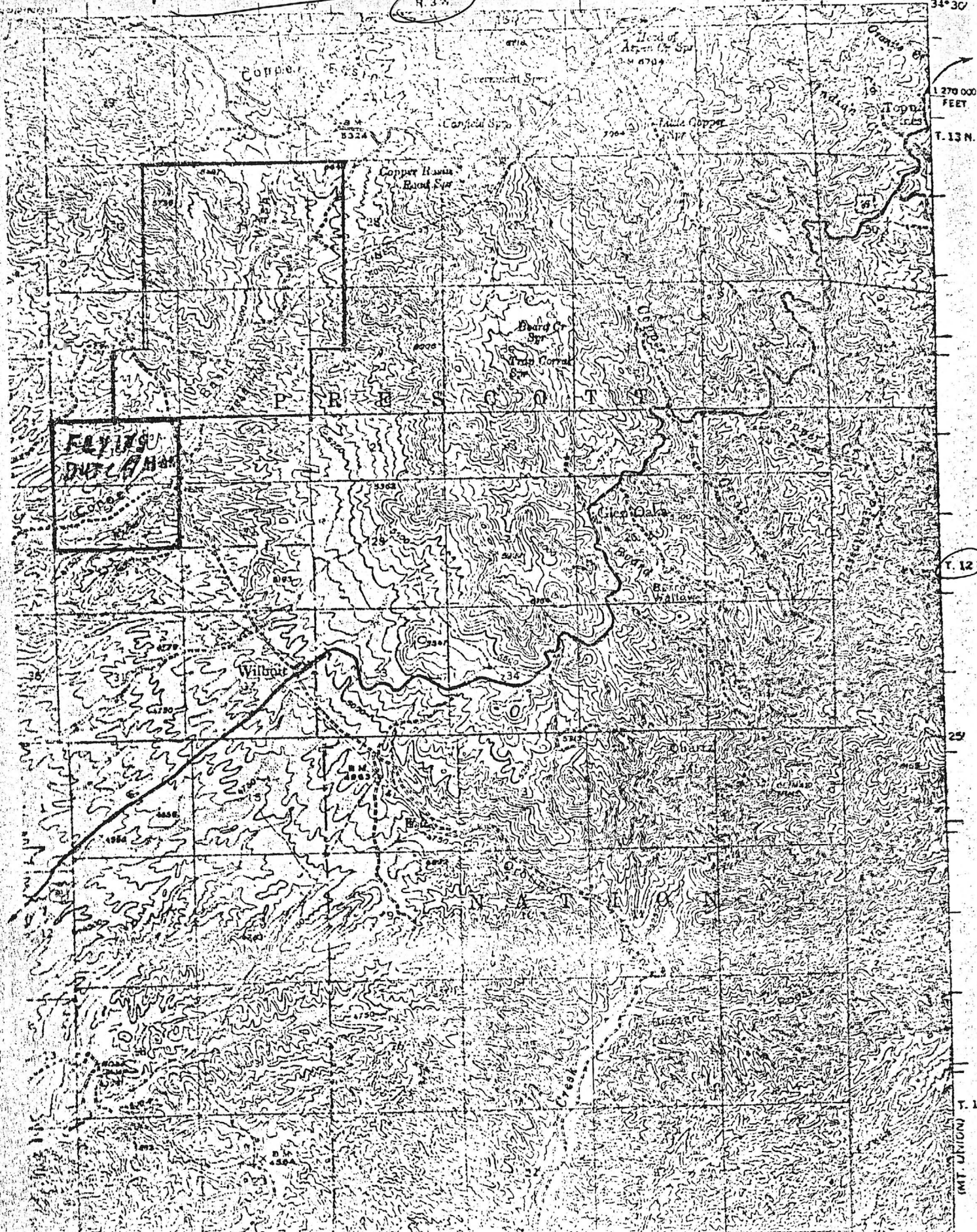
Yavapai
Copper Basin

See also: Golden Nugget Placer Mine (file) Yavapai County
Floren Klopfenstein Confidential file

Flying Dutchman Mine
FLYING DUTCHMAN MINE

Flying Dutchman
**KIRKLAND QUADRANGLE
ARIZONA-YAVAPAI CO.
15 MINUTE SERIES (TOPOGRAPHIC)**

120 000 FEET R. 2 W. 112° 30' 34" W

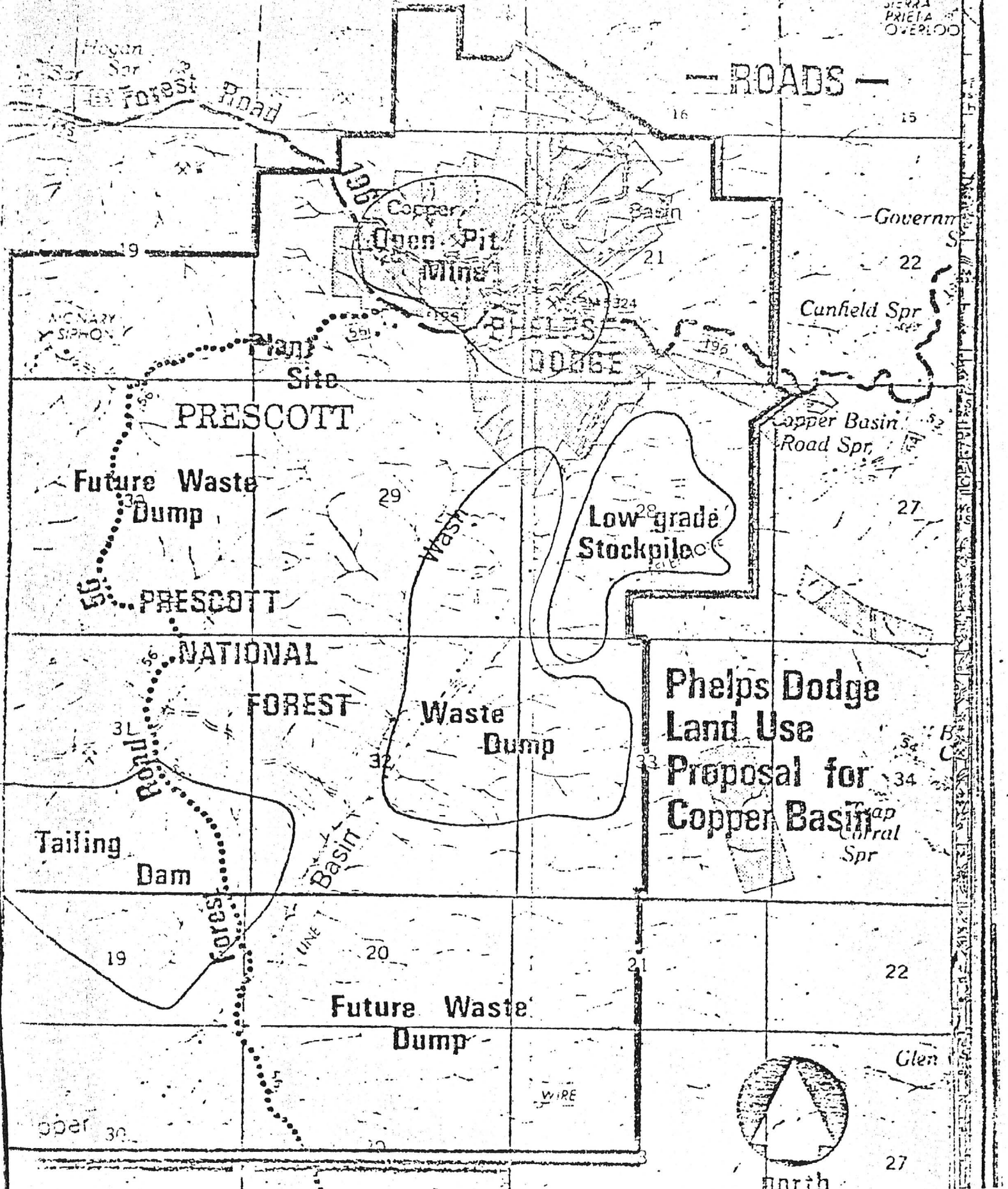


11-11-1903
S. J. GARDNER
11-11-1903

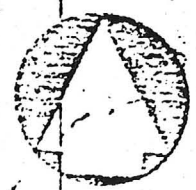
Copper Basin - Selected Land

SIERRA
PRIETA
OVERLOOK

ROADS



Phelps Dodge
Land Use
Proposal for
Copper Basin



North

FLYING DUTCHMAN

YAVAPAI
COPPER BASIN

12.5
T12N R3W Sec. 30 & 19

A Mr. Rekey, Indiana chiropractor, has requested information on a placer deposit in Yavapai County. He has invested in the Golden Nugget and the Flying Dutchman through William J. Marsh, Warren Johnson and Ron Borg, who have reportedly got options to purchase claims. KAP WR 9/22/76

WR GM 2/20/79 Floren Klopfenstein, 934 E. Marlette, Phoenix, AZ 85014, phone: 264-4062, was in. He says he holds the Golden Nugget Mine near Rich Hill and the Flying Dutchman in Copper Basin. Mr. Klopfenstein stated that he purchased the claim from a Bill Marsh for around \$57,000 but later found out that not all of the claims were owned by Mr. Marsh. Mr. Klopfenstein stated that he had spent \$400,000 on his properties to date.

Gala

ENTERPRISES, INC.

EQUIPMENT NEEDED FOR OPERATING THE GOLDEN NUGGET GOLD MINE in PHOENIX, ARIZONA

EQUIPMENT NEEDED FOR OPERATING THE ^{AND} FLYING DUTCHMAN GOLD MINE is as follows:

- 1 Bulldozer Front End Loader (D-8 Cat or larger)
- 1 Crawler Crane Backhoe
- 1 Trommel or 2 Deck Shaker Screen 4' X 14
- 60' Conveyer 30" Wide With Hopper
- 1 Duplex Mineral Jig 36 X 36
- 1 Wilfry Concentrating Table
- 1 50 K W Generator Unit
- 2 " and 4 " PAC Pipe
- 1 Mag Separator
- 1 Dewatering Classifier (screw type)
- 1 Trommel 4' X 24
- Smelter
- 1 Amalgamation Unit
- 1 Movable Stacking Conveyer
- 2 Sluice Boxes one with hopper
- 1 Vertical Sand Pump
- 1 selective Mineral Jig
- 1 8" grizzly for main feeder hopper

After full capacity operation a second Bull Dozer Loader will be required for replacement of material, etc.

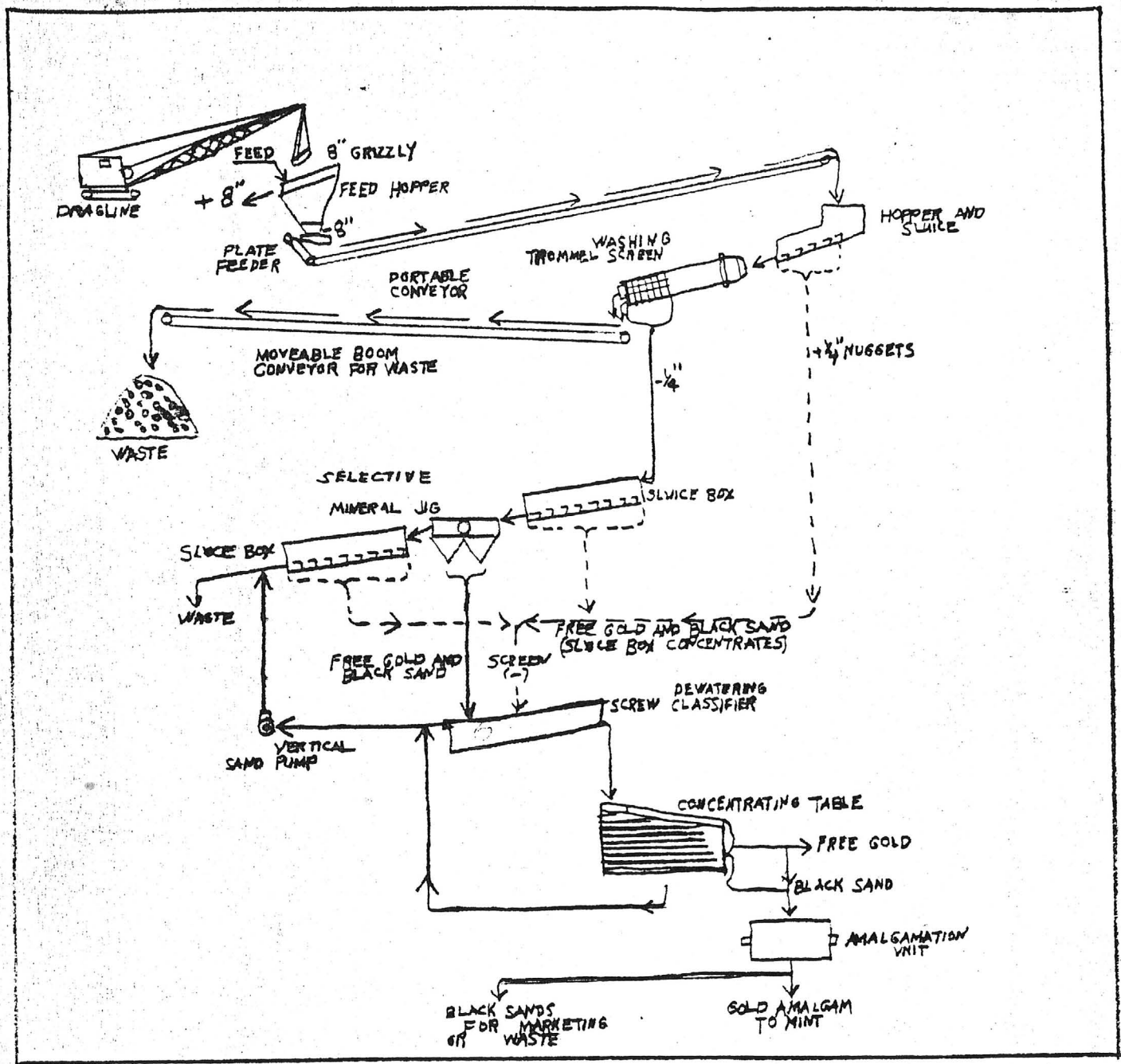
Material could be bagged and shipped to various markets that are available, if desired.

THIS EQUIPMENT WHEN SET UP AS A WORKING PLANT WOULD BE ABLE TO HANDLE FROM 2000 to 10,000 tons per day. The varying capacity is due to the different areas and if the plant/^{is} operated 8 hour or 24 hour days.

Route 2

Camden, Michigan

GOLD DEPOSITS



PROCESSING BLACK SAND

The handling of large quantities of gold bearing gravels is important for successful operation. The placer plant should be constructed as a compact unit that can be readily moved and should be kept close to the mining area. Adequate and efficient washing and recovery methods must be used. Feeding will depend on conditions as depth of sand, overburden, quantities of boulders, water table, topography, and operating space. Large boulders are rejected by the heavy 8" grizzly on top of the feeder hopper. Following is a list of equipment needed for this operation. With the proper size of equipment this system will handle 100 tons per hour.

Floren Klopfenstein President
GALA Enterprises Inc.

VALLEY ASSAY OFFICE AND ORE TESTING LABORATORY

MEMORANDUM OF ASSAY

Made for Floren Klopfenstein

Tempe, Arizona..... Jan. 7, 19..77

| SAMPLE NO. | PER TON OF 2000 POUNDS AVOIRDUPOIS | | | | | | | | COPPER, OR | | | LEAD, OR | | | ZINC, OR | | | TOTAL | |
|------------|------------------------------------|-----------|-----|------|--------|-----------|------|---|------------|---------|---|----------|---------|---|----------|---------|----|-------|--|
| | GOLD, PLATINUM | | | | SILVER | | | | | | | | | | | | | | |
| | AT | PER OUNCE | | | AT | PER OUNCE | | | AT | PER LB. | | AT | PER LB. | | AT | PER LB. | | | |
| OZS. | 100's | \$ | Cts | OZS. | 100's | \$ | Cts. | % | \$ | Cts. | % | \$ | Cts. | % | \$ | Cts. | \$ | Cts. | |
| 7 | 32. | 80 | | | | | | | | | | | | | | | | | |
| 8 | 0. | 18 | | | | | | | | | | | | | | | | | |
| 9-A | 7. | 04 | | | | | | | | | | | | | | | | | |
| 15 | 0. | 05 | | | | | | | | | | | | | | | | | |
| 16 | 0. | 24 | | | | | | | | | | | | | | | | | |
| REMARKS: | | | | | | | | | | | | | | | | | | | |



NO.....

BY..... Registered Assayer.

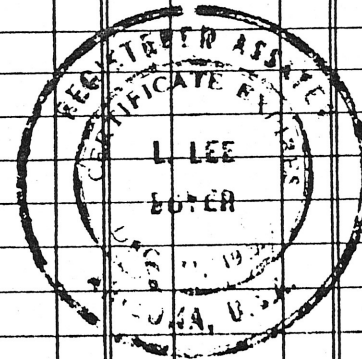
CHARGE \$..... 32.00 Pd.

**VALLEY ASSAY OFFICE
AND ORE TESTING LABORATORY
MEMORANDUM OF ASSAY**

Made for Floren Klopensein

Tempe, Arizona..... Jan. 12....., 19 77

| SAMPLE NO. | PER TON OF 2000 POUNDS AVOIRDUPOIS | | | | | | | | COPPER, OR | | | LEAD, OR | | | ZINC, OR | | | TOTAL | | |
|------------|------------------------------------|-------|-----------|-----|--------|-------|-----------|------|------------|----|------|----------|----|------|----------|----|------|---------|------|--|
| | GOLD, ##### | | | | SILVER | | | | | | | | | | | | | | | |
| | AT | | PER OUNCE | | AT | | PER OUNCE | | AT | | | PER LB. | | | AT | | | PER LB. | | |
| | OZS. | 100's | \$ | Cts | OZS. | 100's | \$ | Cts. | % | \$ | Cts. | % | \$ | Cts. | % | \$ | Cts. | \$ | Cts. | |
| 12-A | Trace | | | | | | | | | | | | | | | | | | | |
| 12-B | 0.01 | | | | | | | | | | | | | | | | | | | |
| 14 | 21.72 | | | | | | | | | | | | | | | | | | | |
| REMARKS: | | | | | | | | | | | | | | | | | | | | |



NO.

BY Registered Assayer.

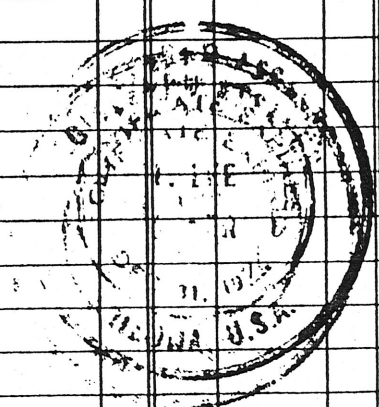
CHARGE \$ 24.00 Pd.

**VALLEY ASSAY OFFICE
AND ORE TESTING LABORATORY
MEMORANDUM OF ASSAY**

Made for F. Klopferstein

Tempe, Arizona, Dec. 16, 1976.

| SAMPLE NO. | PER TON OF 2000 POUNDS AVOIRDUPOIS | | | | | | | | COPPER, OR | | | LEAD, OR | | | ZINC, OR | | | TOTAL | | |
|------------|------------------------------------|-------|-----------|-----|--------|-------|-----------|------|------------|----|------|----------|----|------|----------|----|------|---------|------|--|
| | GOLD, PER OUNCE | | | | SILVER | | | | | | | | | | | | | | | |
| | AT | | PER OUNCE | | AT | | PER OUNCE | | AT | | | PER LB. | | | AT | | | PER LB. | | |
| | OZS. | 100's | \$ | Cts | OZS. | 100's | \$ | Cts. | % | \$ | Cts. | % | \$ | Cts. | % | \$ | Cts. | \$ | Cts. | |
| 1 Fines | 4. | 24 | | | | | | | | | | | | | | | | | | |
| 2 | 3. | 31 | | | | | | | | | | | | | | | | | | |
| 3 | 2. | 11 | | | | | | | | | | | | | | | | | | |
| 4 Cons. | 14. | 72 | | | | | | | | | | | | | | | | | | |
| REMARKS: | | | | | | | | | | | | | | | | | | | | |



NO.

BY [Signature] Registered Assayer.

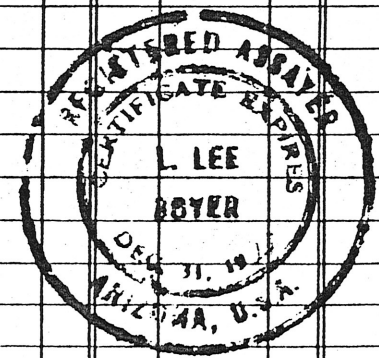
CHARGE \$ 32.00 Pd.

**VALLEY ASSAY OFFICE
AND ORE TESTING LABORATORY**
MEMORANDUM OF ASSAY

Made for Floren Klopflenstein

Tempe, Arizona Dec. 28, 1977

| SAMPLE NO. | PER TON OF 2000 POUNDS AVOIRDUPOIS | | | | | | | | COPPER, OR | | | LEAD, OR | | | ZINC, OR | | | TOTAL | |
|------------|------------------------------------|-----------|----|------|--------|-----------|----|------|------------|---------|------|----------|---------|------|----------|---------|------|-------|------|
| | GOLD, PER TON | | | | SILVER | | | | | | | | | | | | | | |
| | AT | PER OUNCE | | | AT | PER OUNCE | | | AT | PER LB. | | AT | PER LB. | | AT | PER LB. | | | |
| | OZS. | 100's | \$ | Cts. | OZS. | 100's | \$ | Cts. | % | \$ | Cts. | % | \$ | Cts. | % | \$ | Cts. | \$ | Cts. |
| 24 | 0. | 04 | | | | | | | | | | | | | | | | | |
| x 25 | 3. | 42 | | | | | | | | | | | | | | | | | |
| 26 | 0. | 11 | | | | | | | | | | | | | | | | | |
| / 27 | 1. | 64 | | | | | | | | | | | | | | | | | |
| | | | | | | | | | | | | | | | | | | | |
| | | | | | | | | | | | | | | | | | | | |
| | | | | | | | | | | | | | | | | | | | |
| | | | | | | | | | | | | | | | | | | | |
| | | | | | | | | | | | | | | | | | | | |
| | | | | | | | | | | | | | | | | | | | |
| REMARKS: | | | | | | | | | | | | | | | | | | | |



NO.

CHARGE \$ 32.00 Pd.

BY L. Lee Boyer
Registered Assayer.

MINING PROJECTION

See Butter Mine file
extracopy
Floren Klopfenstein

PRODUCTION USING VIBRATING SLUCE BOX***BASED ON FREE GOLD RECOVERY***JANUARY 12, 1979

| | | |
|--|-------------------|-------------------|
| 200 Ton Per Day @ $\frac{1}{4}$ oz. per Ton = 50 oz. X \$160 = | \$8,000.00 | |
| Operating Cost, Fuel, Gas, labor, chemicle=(2 men) | | \$ 260.00 |
| Net profit per 8 hour day operation | | 7,740.00 |
| | <u>\$8,000.00</u> | <u>\$8,000.00</u> |

30 day forecast based on 24 Operating days per Month

| | | |
|-------------------------------|---------------------|---------------------|
| 24 days @ \$8,000 per day | \$192,000.00 | |
| 24 days \$260 per day expense | | \$ 6,240.00 |
| NET PROFIT | | 185,760.00 |
| | <u>\$192,000.00</u> | <u>\$192,000.00</u> |

30 day forecast-3 shifts-24 days

| | | |
|--------------------------------|---------------------|---------------------|
| 24 days total income (3Shifts) | \$576,000.00 | |
| Operating cost | | \$ 18,720.00 |
| Net Profit | | 557,280.00 |
| | <u>\$576,000.00</u> | <u>\$556,000.00</u> |

FORECAST PER YEAR 1 eight hour shift per day

| | | |
|-----------------------|-----------------------|-----------------------|
| Total Income 288 days | \$2,304,000.00 | |
| Expenses | | \$ 74,880.00 |
| NET PROFIT | | 2,229,120.00 |
| | <u>\$2,304,000.00</u> | <u>\$2,304,000.00</u> |

FORECAST PER YEAR 3 eight hour shifts per day

| | | |
|--|-----------------------|-----------------------|
| Total Income operating 24 Hr. Daily for 288 Days | \$6,912,000.00 | |
| Operating cost | | \$ 224,640.00 |
| NET PROFIT | | \$6,687,360.00 |
| | <u>\$6,912,000.00</u> | <u>\$6,912,000.00</u> |

This projection was made based on the recovery BRC. prepared for me after testing our ore samples.

The forecast for 1979 is for at least 6 of these plants to be completed in 1979.

We have enough material for at least 20, years operation.

PREPARED FOR

Floren Klopfenstein
Floren Klopfenstein