



## **CONTACT INFORMATION**

Mining Records Curator  
Arizona Geological Survey  
1520 West Adams St.  
Phoenix, AZ 85007  
602-771-1601  
<http://www.azgs.az.gov>  
[inquiries@azgs.az.gov](mailto:inquiries@azgs.az.gov)

The following file is part of the

Arizona Department of Mines and Mineral Resources Mining Collection

## **ACCESS STATEMENT**

These digitized collections are accessible for purposes of education and research. We have indicated what we know about copyright and rights of privacy, publicity, or trademark. Due to the nature of archival collections, we are not always able to identify this information. We are eager to hear from any rights owners, so that we may obtain accurate information. Upon request, we will remove material from public view while we address a rights issue.

## **CONSTRAINTS STATEMENT**

The Arizona Geological Survey does not claim to control all rights for all materials in its collection. These rights include, but are not limited to: copyright, privacy rights, and cultural protection rights. The User hereby assumes all responsibility for obtaining any rights to use the material in excess of "fair use."

The Survey makes no intellectual property claims to the products created by individual authors in the manuscript collections, except when the author deeded those rights to the Survey or when those authors were employed by the State of Arizona and created intellectual products as a function of their official duties. The Survey does maintain property rights to the physical and digital representations of the works.

## **QUALITY STATEMENT**

The Arizona Geological Survey is not responsible for the accuracy of the records, information, or opinions that may be contained in the files. The Survey collects, catalogs, and archives data on mineral properties regardless of its views of the veracity or accuracy of those data.

PRINTED: 01-29-2009

ARIZONA DEPARTMENT OF MINES AND MINERAL RESOURCES AZMILS DATA

PRIMARY NAME: FLORIDA MINE

ALTERNATE NAMES:  
ROBINSON GROUP  
DOUBLE TOUGH

pima COUNTY MILS NUMBER: 368

LOCATION: TOWNSHIP 19 S RANGE 15 E SECTION 32 QUARTER N2  
LATITUDE: N 31DEG 44MIN 30SEC LONGITUDE: W 110DEG 49MIN 53SEC  
TOPO MAP NAME: MOUNT WRIGHTSON - 15 MIN

CURRENT STATUS: PAST PRODUCER

COMMODITY:  
COPPER  
SILVER  
LEAD

BIBLIOGRAPHY:  
FULL, ROY P., INDIAN CLAIMS COMM. DOCKET 345,  
V. I, P. 298-301, 1970  
ADMMR FLORIDA MINE FILE  
ADMMR "U" FILE CU 26  
USGS BULL. 582 P. 168

FLORIDA MINE

PIMA COUNTY

CJH WR 10/21/83: Canudo Sena, Deputy State Mine Inspector, reports activity in the Greaterville District, Pima Co. The Double Tough tunnel site claim, AMC #193502 is being worked intermittently by a reported three men. It is to be a precious metal producer. The claimant is James N. Olmsted, P O Box 863, Springerville, Arizona 85938 or 436 N. Constitution, Tucson, Arizona 85478. Tel: 885-8950. Sena stated that the workers have constructed a 900' (?) chute from an adit portal dump to a truck loading receiving bin. They are also draining the adit. 4-wheel necessary to get to site.

---

CJH WR 5/4/84: It was reported that John Whatley (c) has gained a contract with Phelps Dodge Corp to supply their New Cornelia Branch (Ajo) with silica (containing precious metal values) from the Double Tough Mine, Greaterville District, Pima County. Production scheduled within 30 days (June 1)

---

CJH WR 7/6/84: From the Double Tough Mine, Greaterville District, Pima Co. the ore will be shipped to the Hel-Roc Mining Co (c) Pima Co, for milling and cons. and to Allied Precious Metals for refining.

---

CJH WR 10/19/84: Visitor: Canuto Sena (c) reported that Lord John Whatley is no longer a partner with Jim Olmstead at the Double Tough mine, Pima County. The new partner is Luke Walker (c). Mr. Walker is also employed at Hughes Aircraft. Mr. Sena said that there is now an 1100' inclined ramp on which tiny ore cars (10" X 14" X 20") are winched.

---

CJH WR 3/1/85: Jim Olmstead, President, Double Tough mines, P O Box 863 Springerville, Az. 85938, phone, 333-3827 and Stuart Logan, miner, Double Tough mines, 5100 N. Amapola Pl, Tucson, Az. 85745, phone 743-7839, visited. Brought in some primary lead ore (galena) and asked why their precious metal values were dropping in the primary zone. Described secondary enrichment to them and suggested they mine in the lower portion of the oxide zone using sample assay control. They reported that John Whatley has gone to Alaska.

---



STATE MINE INSPECTOR

MAY 14 1984

## Office of State Mine Inspector

705 West Wing, Capitol Building  
Phoenix, Arizona 85007  
602-255-5971

NOTICE TO ARIZONA STATE MINE INSPECTOR

In compliance with Arizona Revised Statute Section 27-303\*, we are submitting this written notice to the Arizona State Mine Inspector (705 West Wing, Capitol Building, Phoenix, Arizona 85007) of our intent to start/stop (please circle one) a mining operation.

COMPANY NAME Double Tough Mining Co. ✓  
CHIEF OFFICER Jim Elmstad  
COMPANY ADDRESS P.O. Box 5105 Tucson, Az 85703  
COMPANY TELEPHONE NUMBER 623-4522

MINE OR PLANT NAME Double Tough Mine

MINE OR PLANT LOCATION (including county and nearest town, as well as directions for locating by vehicle)

Sect. 29 T. 19S R 15E up west  
Sawmill Canyon next to the Florida  
Work Camp U.S. Nation Forest, E. of Central, Az

TYPE OF OPERATION underground PRINCIPAL PRODUCT Ag Ag

STARTING DATE 5/8/84 CLOSING DATE unknown

DURATION OF OPERATION unknown

PERSON SENDING THIS NOTICE Lord John S. Whately

TITLE OF PERSON SENDING THIS NOTICE Mine Representative

DATE NOTICE SENT TO STATE MINE INSPECTOR 5-10-84

\*A.R.S. Section 27-303 NOTIFICATION TO INSPECTOR OF BEGINNING-OR SUSPENDING OPERATIONS: When mining operations are commenced in any mine or when operations therein are permanently suspended, the operator shall give written notice to the inspector at his office prior to commencement or suspension of operations.



15 E

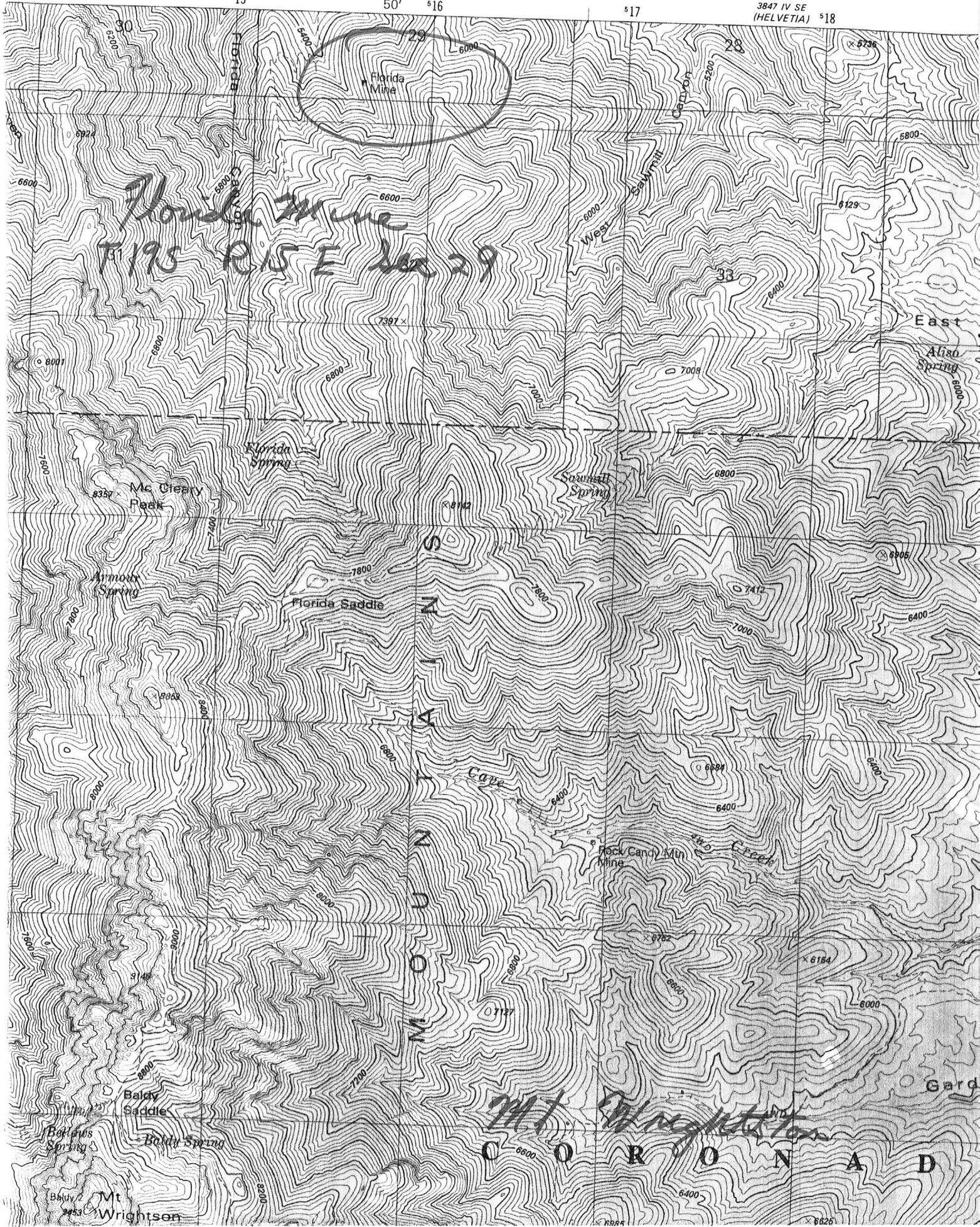
15

50'

16

17

3847 IV SE  
(HELVETIA) 18





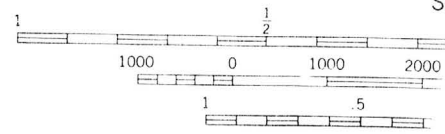
and published by the Geological Survey  
 IOS/NOAA

ammetric methods from aerial photographs  
 cked 1976. Map edited 1981

oot grid ticks: Arizona coordinate  
 (inverse Mercator)

Helvetia 7.5

GN  
 MN  
 12 1/2°  
 0°06'



S

DEPARTMENT OF MINERAL RESOURCES

STATE OF ARIZONA  
FIELD ENGINEERS REPORT

Mine Florida Mine

Date August 4, 1960

District Old Baldy District, Pima County

Engineer Axel L. Johnson

Subject: Information from Ben H. Anderson, 3962 E. North St., Tucson.

References: Bull. #582 - "Mineral Deposits of the Santa Rita and Patagonia Mountains" by Schrader - pages 168 & 169.

Location: Secs. 29 & 32 - T. 19 S., R. 15 E. On the east side of the east fork of Stone Cabin Canyon and about 1 mile N of the Pima-Santa Cruz Co. line. (Stone Cabin Canyon is from  $2\frac{1}{2}$  to 3 miles east of Madera Canyon.) Elevation about 6300 ft. There is no road up to the property. It is reached by a 3 mile walk up the mountain.

Number of Claims: 3 unpatented claims

Owner: Ben H. Anderson, 3962 E. North St., Tucson, Ariz.

Principal Minerals: Copper and Silver

Present Activity: Idle

Geology: See Schrader's report - pages 168 & 169.

Ore Values: Mr. Anderson reports that handsorted ore runs \$30 to \$33 per ton in copper & silver values.

Past History: Mr. Anderson reports that he shipped 100 tons of ore in 1915 to A.S.&R. smelter at Hayden, which netted him \$3,000.00. This ore was handsorted and hauled for 3 miles down the mountains by burros.

Remarks: About 4 miles of mountain road should be built to the property. This, Mr. Anderson estimates, would cost \$10,000.



FLORIDA MINE

PIMA AND SANTA CRUZ COUNTY

Mine visit. Florida Mine (Santa Rita Mts.). No apparent activity. GWI WR 928/71

---

Elmer Lyon is working the old Florida mine in the Santa Rita Mts. VBD WR 1/19/76

---

reference: Santa Cruz Co. - Florida Mine  
USGS Bull 582 p. 168

Elmer Lyons, who has some type of option on the Florida Mine group in the Santa Rita Mountains of Pima County, stopped at the office to inquire about how to handle drunken and disorderly hunters who carry on on his claim. I obtained hunting regulations and laws governing discharge of firearms, along with report cards to be mailed to the State Game & Fish authorities. I also suggested he report these illegal entries to the Forest Service. Elmer reported that he has exposed a wide (+25 feet) vein of silver ore with assays up to 40 ounces. I spent over an hour explaining with diagrams how to find with a gold pan, the enriched zones in the structure. VBD WR 1/13/77

---

WR/GI 1/13/78 - Elmer Lyons visited the office to report that he had returned from Idaho to work on his property (FLORIDA in the Santa Rita Mts. Pima Co.). 2/24/78 a.p.