



CONTACT INFORMATION

Mining Records Curator
Arizona Geological Survey
1520 West Adams St.
Phoenix, AZ 85007
602-771-1601
<http://www.azgs.az.gov>
inquiries@azgs.az.gov

The following file is part of the

Arizona Department of Mines and Mineral Resources Mining Collection

ACCESS STATEMENT

These digitized collections are accessible for purposes of education and research. We have indicated what we know about copyright and rights of privacy, publicity, or trademark. Due to the nature of archival collections, we are not always able to identify this information. We are eager to hear from any rights owners, so that we may obtain accurate information. Upon request, we will remove material from public view while we address a rights issue.

CONSTRAINTS STATEMENT

The Arizona Geological Survey does not claim to control all rights for all materials in its collection. These rights include, but are not limited to: copyright, privacy rights, and cultural protection rights. The User hereby assumes all responsibility for obtaining any rights to use the material in excess of "fair use."

The Survey makes no intellectual property claims to the products created by individual authors in the manuscript collections, except when the author deeded those rights to the Survey or when those authors were employed by the State of Arizona and created intellectual products as a function of their official duties. The Survey does maintain property rights to the physical and digital representations of the works.

QUALITY STATEMENT

The Arizona Geological Survey is not responsible for the accuracy of the records, information, or opinions that may be contained in the files. The Survey collects, catalogs, and archives data on mineral properties regardless of its views of the veracity or accuracy of those data.

PRINTED: 11-14-2006

ARIZONA DEPARTMENT OF MINES AND MINERAL RESOURCES AZMILS DATA

PRIMARY NAME: FIVE CORNERS CLAIMS

ALTERNATE NAMES:

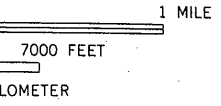
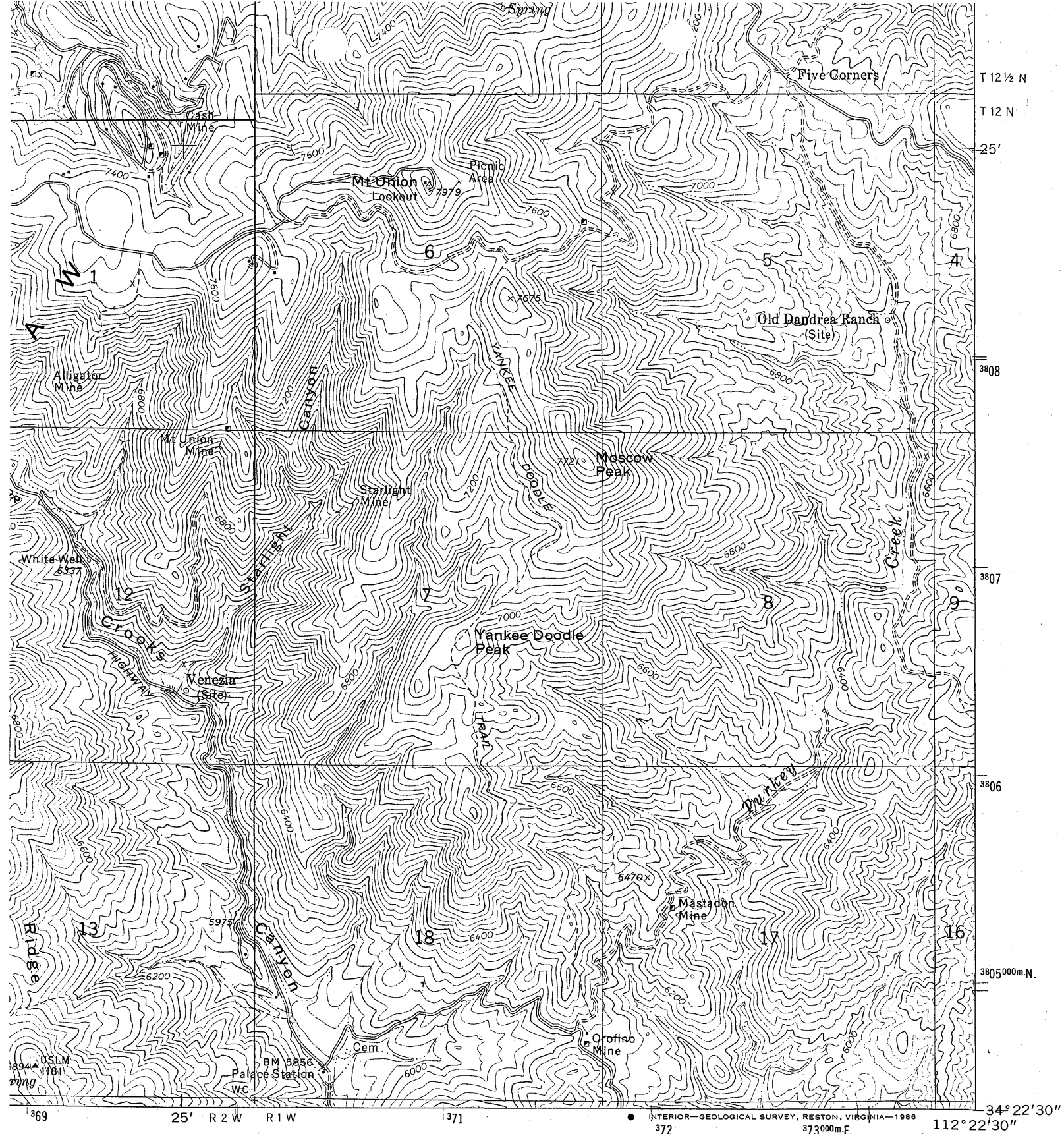
YAVAPAI COUNTY MILS NUMBER: 1283

LOCATION: TOWNSHIP 12 N RANGE 1 W SECTION 5 QUARTER E2
LATITUDE: N 34DEG 24MIN 42SEC LONGITUDE: W 112DEG 22MIN 52SEC
TOPO MAP NAME: GROOM CREEK - 7.5 MIN

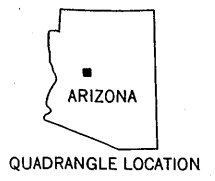
CURRENT STATUS: UNKNOWN

COMMODITY:
GOLD PLACER

BIBLIOGRAPHY:
ADMMR FIVE CORNERS CLAIMS



Five corners claims



ROAD CLASSIFICATION

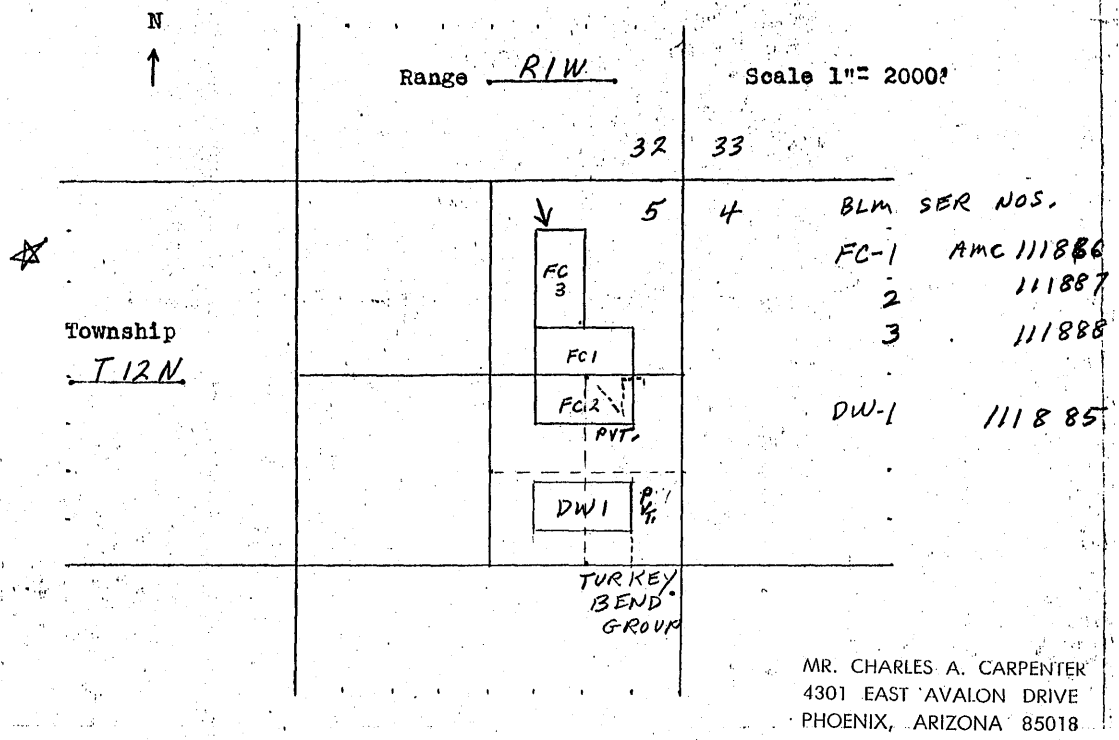
Primary highway, hard surface.....	Light-duty road, hard or improved surface.....
Secondary highway, hard surface.....	Unimproved road.....
○ Interstate Route	○ U. S. Route
	○ State Route

7.5 MIN GROOM CREEK, ARIZ.
NW/4 MT. UNION 15' QUADRANGLE
34112-D4-TF-024

(BATTLE F. 3552 N. SE)

DAN DREA WEST #1
 PLAT OF THE FIVE CORNERS #3 (X) PLACER CLAIM
YAVAPAI County, Arizona () LODE CLAIM
 () MILLSITE

MILS
 # 1283



GEOLOGY - SCHIST BEDROCK, ALTITUDE 6,600'

METAL - PLACER GOLD.

ASSAYS - TR. TO APPROX. .1 OZ. CU/YD.

DEPOSITS - PRESENT STREAM BED
 ESTIMATED YARDAGE 5,000 CU/YDS.

WATER - CREEK TRIBUTARIES FLOW DURING SPRING
 RUN OFF UNTIL SUMMER.

TERMS - SELL FOR \$20,000 OR LEASE WITH OPTION.