



## **CONTACT INFORMATION**

Mining Records Curator  
Arizona Geological Survey  
1520 West Adams St.  
Phoenix, AZ 85007  
602-771-1601  
<http://www.azgs.az.gov>  
[inquiries@azgs.az.gov](mailto:inquiries@azgs.az.gov)

The following file is part of the

Arizona Department of Mines and Mineral Resources Mining Collection

## **ACCESS STATEMENT**

These digitized collections are accessible for purposes of education and research. We have indicated what we know about copyright and rights of privacy, publicity, or trademark. Due to the nature of archival collections, we are not always able to identify this information. We are eager to hear from any rights owners, so that we may obtain accurate information. Upon request, we will remove material from public view while we address a rights issue.

## **CONSTRAINTS STATEMENT**

The Arizona Geological Survey does not claim to control all rights for all materials in its collection. These rights include, but are not limited to: copyright, privacy rights, and cultural protection rights. The User hereby assumes all responsibility for obtaining any rights to use the material in excess of "fair use."

The Survey makes no intellectual property claims to the products created by individual authors in the manuscript collections, except when the author deeded those rights to the Survey or when those authors were employed by the State of Arizona and created intellectual products as a function of their official duties. The Survey does maintain property rights to the physical and digital representations of the works.

## **QUALITY STATEMENT**

The Arizona Geological Survey is not responsible for the accuracy of the records, information, or opinions that may be contained in the files. The Survey collects, catalogs, and archives data on mineral properties regardless of its views of the veracity or accuracy of those data.

ARIZONA DEPARTMENT OF MINES AND MINERAL RESOURCES AZMILS DATA

PRIMARY NAME: FITTSBURG PROSPECT

ALTERNATE NAMES:

SIX MILE HILL MINE GROUP  
VI CLAIMS

COCHISE COUNTY MILS NUMBER: 137

LOCATION: TOWNSHIP 18 S RANGE 25 E SECTION 6 QUARTER SE  
LATITUDE: N 31DEG 53MIN 44SEC LONGITUDE: W 109DEG 50MIN 05SEC  
TOPO MAP NAME: PEARCE - 15 MIN

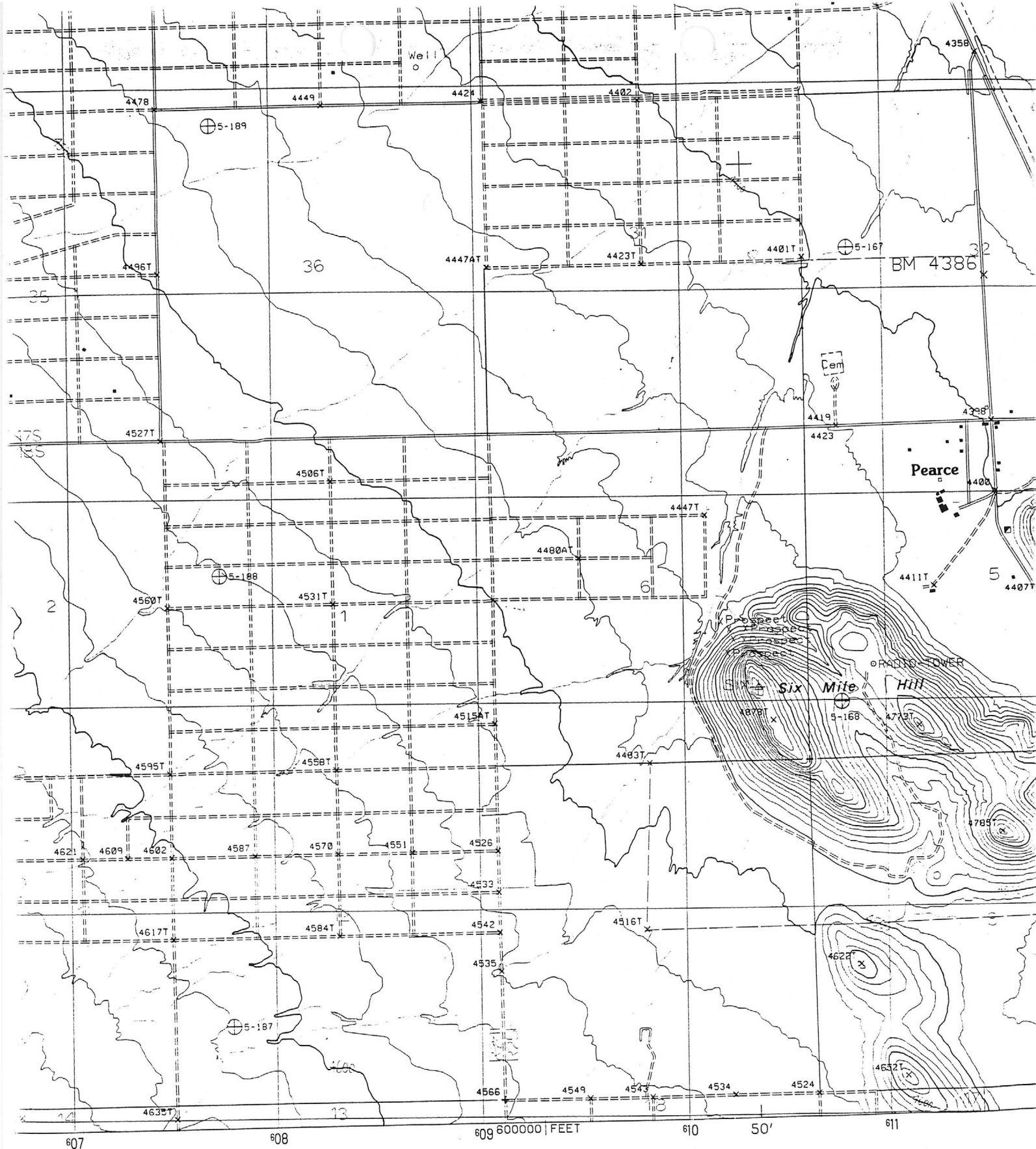
CURRENT STATUS: PAST PRODUCER

COMMODITY:

SILVER  
GOLD LODE

BIBLIOGRAPHY:

KEITH, S.B., 1973, AZBM BULL. 187, P. 70  
ADMMR FITTSBURG PROSPECT FILE



ED BY THE UNITED STATES GEOLOGICAL SURVEY  
 BY ..... USGS, NOS/NOAA  
 FROM AERIAL PHOTOGRAPHS TAKEN ..... 1978  
 CKED ..... 1979 MAP EDITED ..... 1985  
 N. .... TRANSVERSE MERCATOR  
 METER UNIVERSAL TRANSVERSE MERCATOR ..... ZONE 12  
 -FOOT STATE GRID TICKS ..... ARIZONA, EAST ZONE  
 DECLINATION ..... 0°38' EAST  
 NETIC NORTH DECLINATION ..... 11°30' EAST  
 ATUM ..... NATIONAL GEODETIC VERTICAL DATUM OF 1929  
 L DATUM ..... 1927 NORTH AMERICAN DATUM  
 on the predicted North American Datum of 1983,  
 e projection lines as shown by dashed corner ticks  
 south and 60 meters east)



PROVISIONAL MAP

SUPP

FITTSBURG PROSPECT

COCHISE COUNTY

MG WR 4/2/82: E. Grover Heinrichs & Assoc., 1802 W. Grant Road, Suite 110-4, Tucson, AZ 85715m have staked the VI claims on the west side of Sixmile Hill south of Pearce. The claim group is in Cochise County (Pearce 15') and apparently encompasses the Fittsburg Prospect as identified by MILS #137.

---