



## **CONTACT INFORMATION**

Mining Records Curator  
Arizona Geological Survey  
1520 West Adams St.  
Phoenix, AZ 85007  
602-771-1601  
<http://www.azgs.az.gov>  
[inquiries@azgs.az.gov](mailto:inquiries@azgs.az.gov)

The following file is part of the

Arizona Department of Mines and Mineral Resources Mining Collection

## **ACCESS STATEMENT**

These digitized collections are accessible for purposes of education and research. We have indicated what we know about copyright and rights of privacy, publicity, or trademark. Due to the nature of archival collections, we are not always able to identify this information. We are eager to hear from any rights owners, so that we may obtain accurate information. Upon request, we will remove material from public view while we address a rights issue.

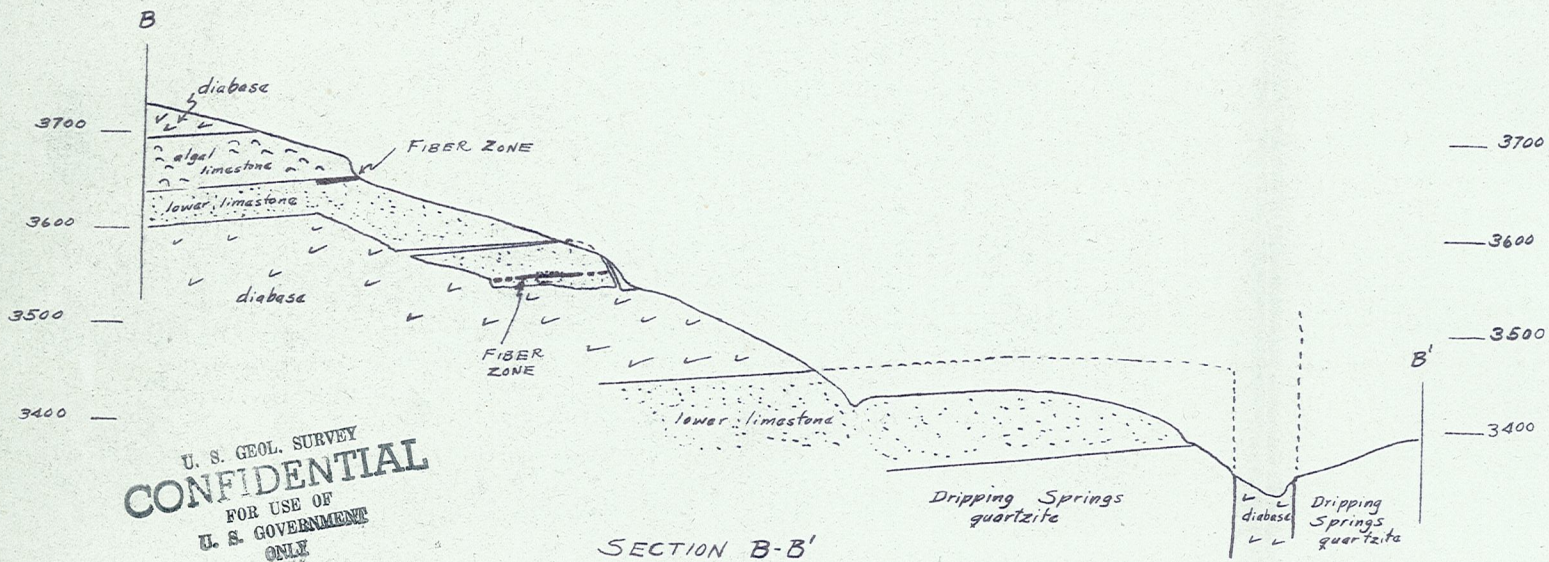
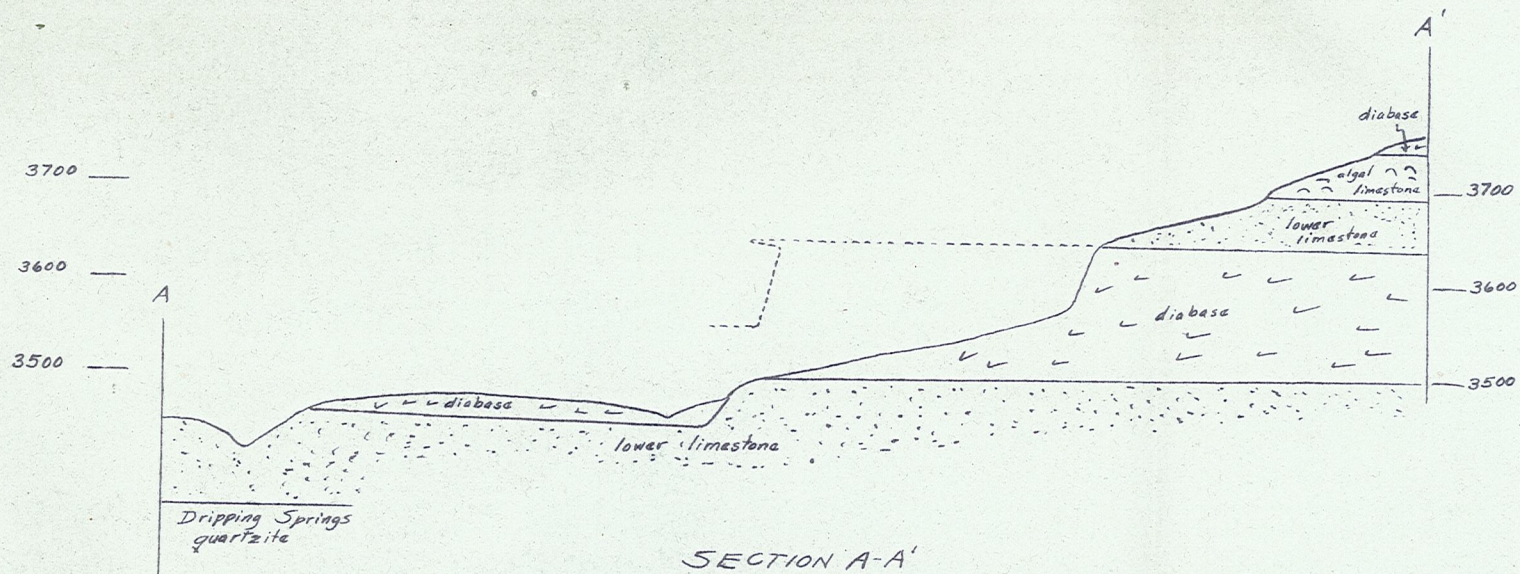
## **CONSTRAINTS STATEMENT**

The Arizona Geological Survey does not claim to control all rights for all materials in its collection. These rights include, but are not limited to: copyright, privacy rights, and cultural protection rights. The User hereby assumes all responsibility for obtaining any rights to use the material in excess of "fair use."

The Survey makes no intellectual property claims to the products created by individual authors in the manuscript collections, except when the author deeded those rights to the Survey or when those authors were employed by the State of Arizona and created intellectual products as a function of their official duties. The Survey does maintain property rights to the physical and digital representations of the works.

## **QUALITY STATEMENT**

The Arizona Geological Survey is not responsible for the accuracy of the records, information, or opinions that may be contained in the files. The Survey collects, catalogs, and archives data on mineral properties regardless of its views of the veracity or accuracy of those data.

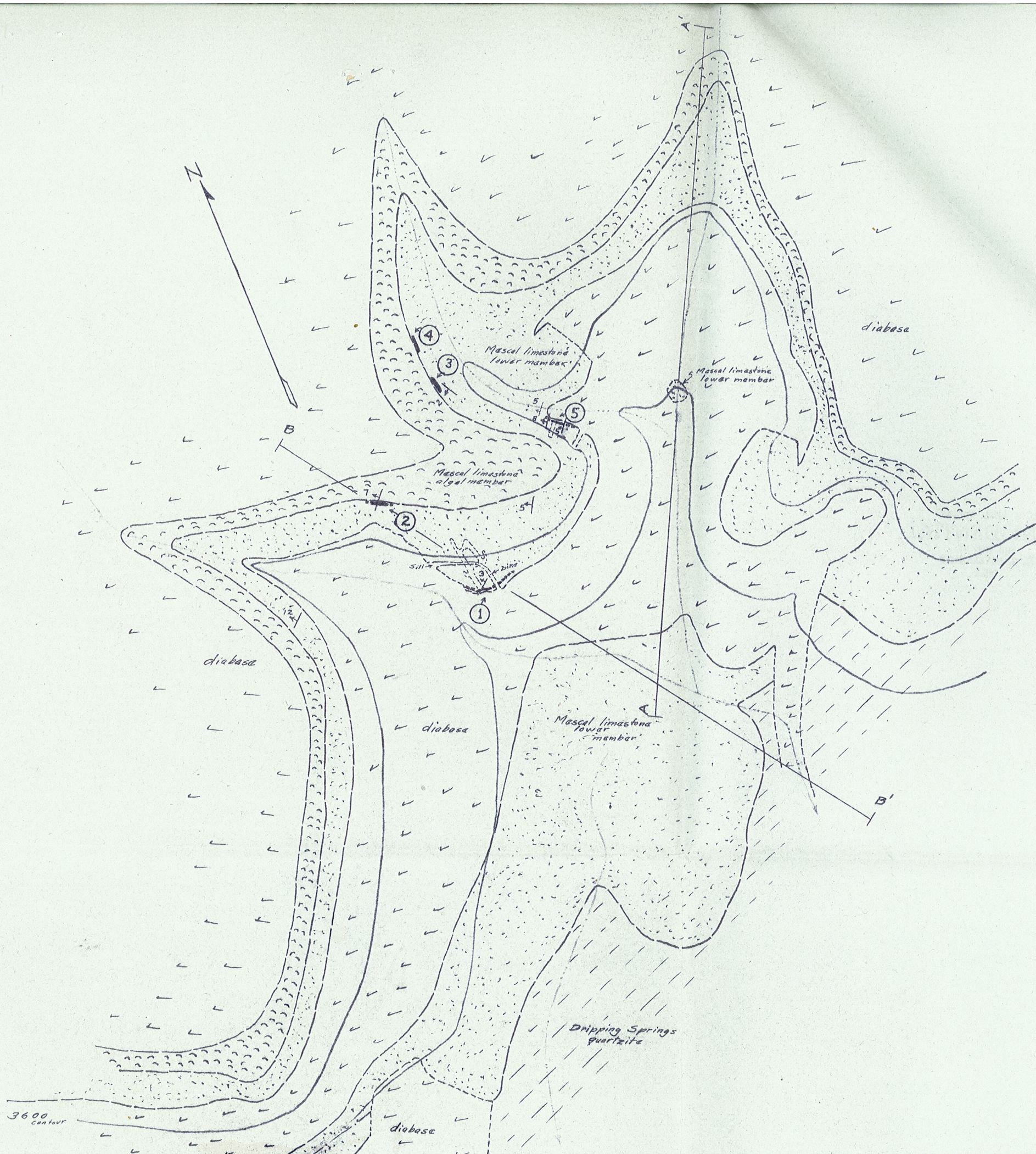


U. S. GEOL. SURVEY  
**CONFIDENTIAL**  
 FOR USE OF  
 U. S. GOVERNMENT  
 ONLY

SKETCH CROSS SECTIONS

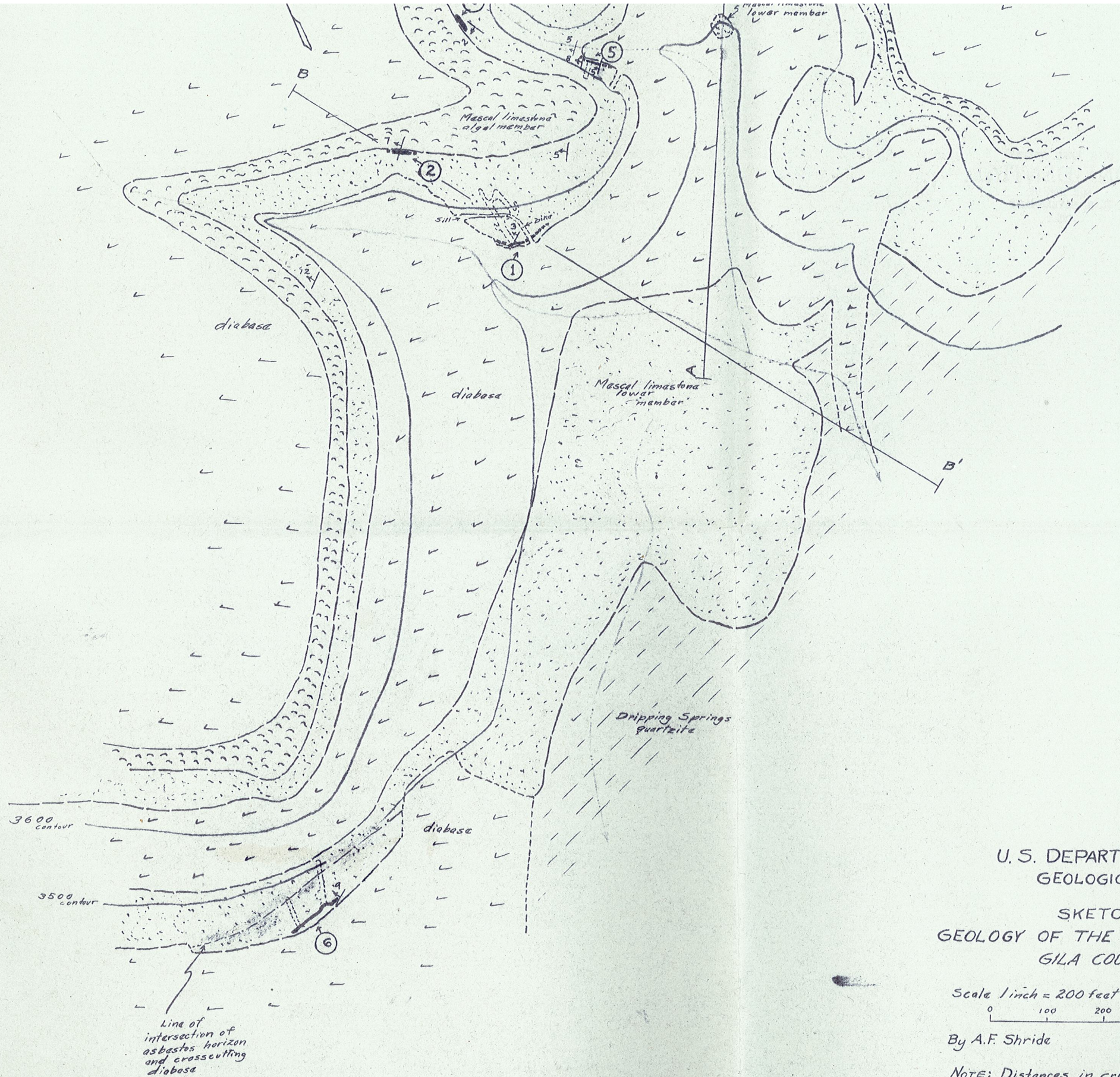
FIBER KING ASBESTOS PROPERTIES

Scale 1 inch = 200 feet



EXPLANATION

- ASBESTOS ZONE
- TRACES OF ASBESTOS
- DIABASE
- MESCAL LIMESTONE-ALGAL MEMBER
- MESCAL LIMESTONE-LOWER MEMBER
- DRIPPING SPRINGS QUARTZITE
- GEOLOGIC CONTACT
- CONTACT WITH CROSSCUTTING DIABASE
- STRIKE AND DIP OF BEDS
- MINE WORKINGS
- LOCALITY MENTIONED IN TEXT



EXPLANATION

- ASBESTOS ZONE
- TRACES OF ASBESTOS
- DIABASE
- MESCAL LIMESTONE-ALGAL MEMBER
- MESCAL LIMESTONE-LOWER MEMBER
- DRIPPING SPRINGS QUARTZITE
- GEOLOGIC CONTACT
- CONTACT WITH CROSSCUTTING DIABASE
- STRIKE AND DIP OF BEDS
- MINE WORKINGS
- LOCALITY MENTIONED IN TEXT

U. S. DEPARTMENT OF INTERIOR  
 GEOLOGICAL SURVEY  
 SKETCH MAP  
 GEOLOGY OF THE FIBER KING ASBESTOS PROPERTIES  
 GILA COUNTY, ARIZONA

Scale 1 inch = 200 feet  
 0 100 200 400 600 FEET

By A.F. Shride November 20, 1943

NOTE: Distances in critical areas paced, other distances estimated.

Line of intersection of asbestos horizon and crosscutting diabase