



CONTACT INFORMATION

Mining Records Curator
Arizona Geological Survey
1520 West Adams St.
Phoenix, AZ 85007
602-771-1601
<http://www.azgs.az.gov>
inquiries@azgs.az.gov

The following file is part of the

Arizona Department of Mines and Mineral Resources Mining Collection

ACCESS STATEMENT

These digitized collections are accessible for purposes of education and research. We have indicated what we know about copyright and rights of privacy, publicity, or trademark. Due to the nature of archival collections, we are not always able to identify this information. We are eager to hear from any rights owners, so that we may obtain accurate information. Upon request, we will remove material from public view while we address a rights issue.

CONSTRAINTS STATEMENT

The Arizona Geological Survey does not claim to control all rights for all materials in its collection. These rights include, but are not limited to: copyright, privacy rights, and cultural protection rights. The User hereby assumes all responsibility for obtaining any rights to use the material in excess of "fair use."

The Survey makes no intellectual property claims to the products created by individual authors in the manuscript collections, except when the author deeded those rights to the Survey or when those authors were employed by the State of Arizona and created intellectual products as a function of their official duties. The Survey does maintain property rights to the physical and digital representations of the works.

QUALITY STATEMENT

The Arizona Geological Survey is not responsible for the accuracy of the records, information, or opinions that may be contained in the files. The Survey collects, catalogs, and archives data on mineral properties regardless of its views of the veracity or accuracy of those data.

01/27/87

ARIZONA DEPARTMENT OF MINES AND MINERAL RESOURCES FILE DATA

PRIMARY NAME: EVERGREEN QUARRY

ALTERNATE NAMES:

PINE MOUNTAIN SCHIST

YAVAPAI COUNTY MILS NUMBER: 738

LOCATION: TOWNSHIP 13 N RANGE 1 W SECTION 17 QUARTER NW
LATITUDE: N 34DEG 30MIN 54SEC LONGITUDE: W 112DEG 23MIN 51SEC
TOPO MAP NAME: PRESCOTT - 7.5 MIN

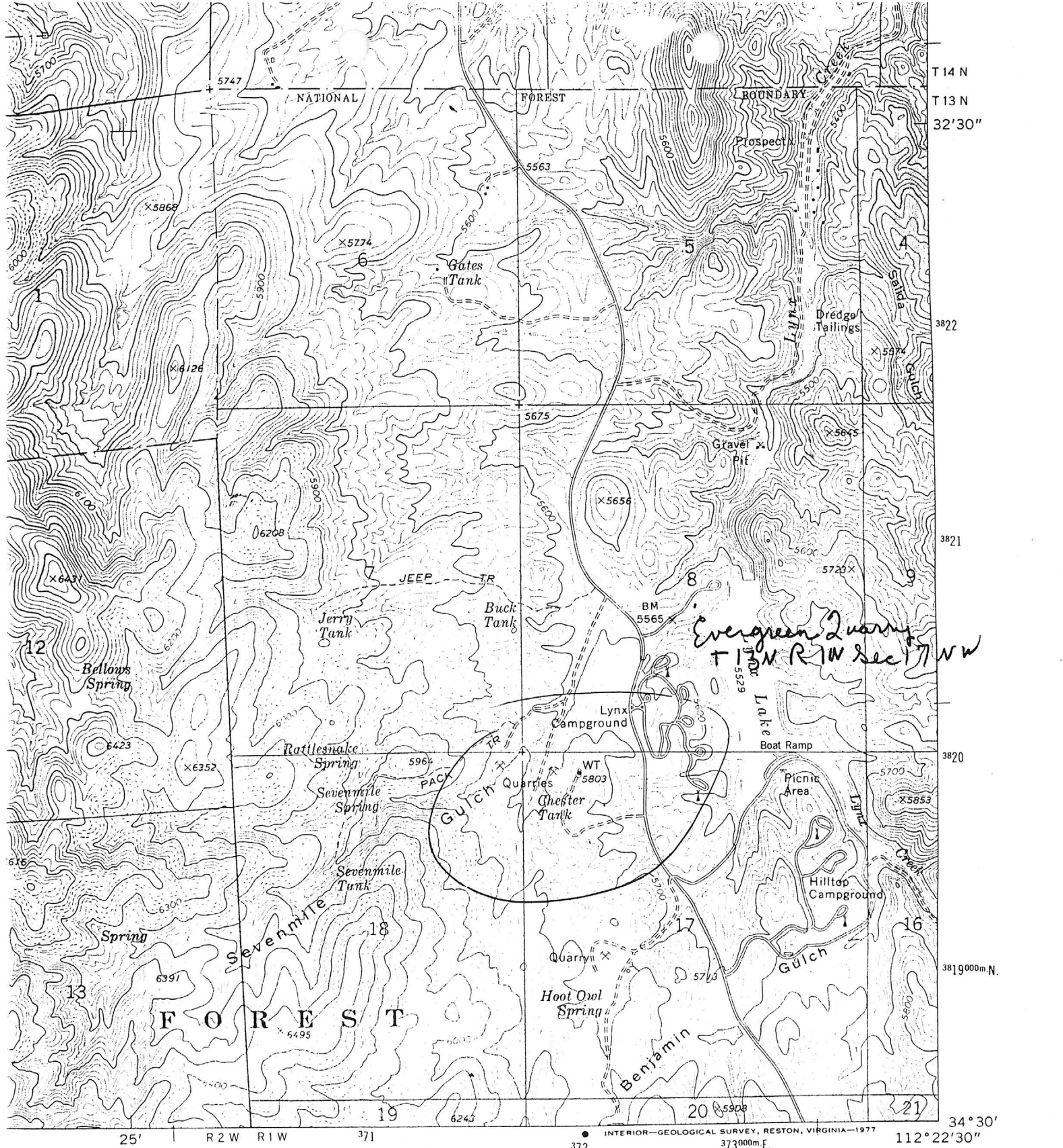
CURRENT STATUS: ACTIVE

COMMODITY:

STONE SCHIST DM

BIBLIOGRAPHY:

OPERATED BY DUNBAR STONE CO
ADMMR EVERGREEN QUARRY FILE
CLAIMS EXTEND INTO SEC 18 NE



1 MILE
ET



ROAD CLASSIFICATION

Primary highway, hard surface ——— Light-duty road, hard or improved surface ———

Secondary highway, hard surface - - - - - Unimproved road - - - - -

○ Interstate Route ⬡ U. S. Route ○ State Route

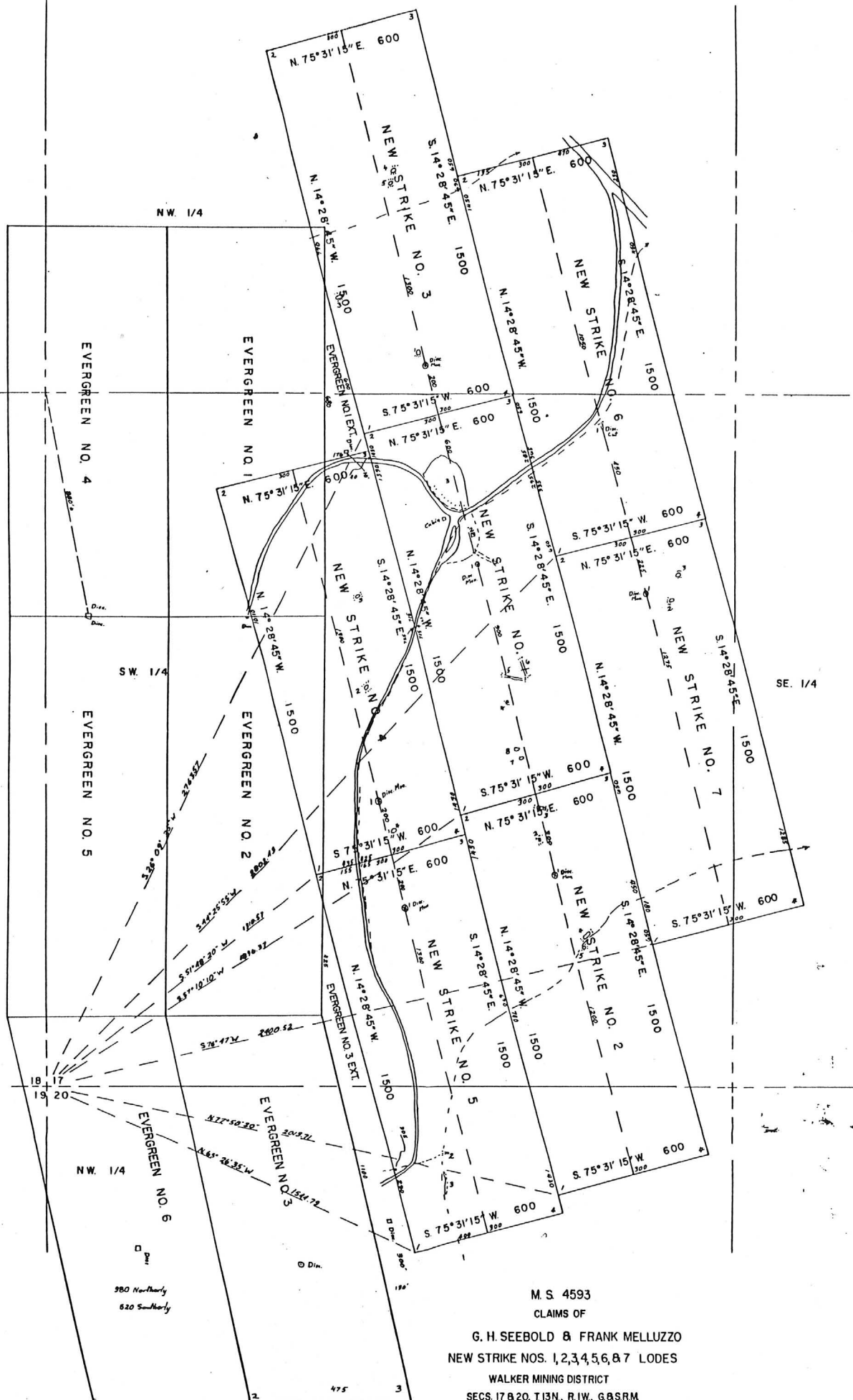
PRESCOTT, ARIZ.
SW/4 PRESCOTT 15' QUADRANGLE
N3430-W11222.5/7.5

EVERGREEN QUARRY

YAVAPAI COUNTY

NJN WR 11/21/86: Quarries, Yavapai MILS Unknown Quarry 736A and Unknown Quarry 738, both located in T13N R1W, Sec 17 are covered by the Evergreen Claims owned by Dunbar Stone Co, (c) P O Box 246, Ashfork, Arizona 86320, 637-3592. The schist being quarried here is marketed under the name of Pine Mountain.

NJN WR 11/20/87: George Dunbar of Dunbar Stone Company (card) reported that the main quarries they produce from in the Ashfork area are the Corva, Horna, Armstrong and Roder. Their main schist quarries are the Evergreen Quarry (file) and New Strike (file) Yavapai County near Lynx Lake. Additionally, they produce from a quarry south of Seligman, a desert rose marble.



M.S. 4593
CLAIMS OF

G. H. SEEBOLD & FRANK MELLUZZO
NEW STRIKE NOS. 1, 2, 3, 4, 5, 6, 7 LODES

WALKER MINING DISTRICT
SECS. 17 & 20, T. 13N., R. 1W., G. & S. RM.
YAVAPAI COUNTY, ARIZONA
SCALE 1" = 200' APR 28
MINERAL SURVEYOR HARVEY E. M.