



CONTACT INFORMATION

Mining Records Curator
Arizona Geological Survey
1520 West Adams St.
Phoenix, AZ 85007
602-771-1601
<http://www.azgs.az.gov>
inquiries@azgs.az.gov

The following file is part of the

Arizona Department of Mines and Mineral Resources Mining Collection

ACCESS STATEMENT

These digitized collections are accessible for purposes of education and research. We have indicated what we know about copyright and rights of privacy, publicity, or trademark. Due to the nature of archival collections, we are not always able to identify this information. We are eager to hear from any rights owners, so that we may obtain accurate information. Upon request, we will remove material from public view while we address a rights issue.

CONSTRAINTS STATEMENT

The Arizona Geological Survey does not claim to control all rights for all materials in its collection. These rights include, but are not limited to: copyright, privacy rights, and cultural protection rights. The User hereby assumes all responsibility for obtaining any rights to use the material in excess of "fair use."

The Survey makes no intellectual property claims to the products created by individual authors in the manuscript collections, except when the author deeded those rights to the Survey or when those authors were employed by the State of Arizona and created intellectual products as a function of their official duties. The Survey does maintain property rights to the physical and digital representations of the works.

QUALITY STATEMENT

The Arizona Geological Survey is not responsible for the accuracy of the records, information, or opinions that may be contained in the files. The Survey collects, catalogs, and archives data on mineral properties regardless of its views of the veracity or accuracy of those data.

PRINTED: 12-16-2010

ARIZONA DEPARTMENT OF MINES AND MINERAL RESOURCES AZMILS DATA

PRIMARY NAME: EUGENE PROPERTY

ALTERNATE NAMES:

ELLIOT
CALAMITY JANE
MOUNTAIN DRIVER CLAIM

YAVAPAI COUNTY MILS NUMBER: 1071B

LOCATION: TOWNSHIP 13 N RANGE 1 W SECTION 35 QUARTER SW
LATITUDE: N 34DEG 27MIN 38SEC LONGITUDE: W 112DEG 20MIN 23SEC
TOPO MAP NAME: POLAND JUNCTION - 7.5 MIN

CURRENT STATUS: UNKNOWN

COMMODITY:

COPPER

BIBLIOGRAPHY:

USGS POLAND JUNCTION QUAD
ADMMR EUGENE PROPERTY FILE

P.O. BOX 66
INSPIRATION, ARIZONA 85537

~~POSTMAN~~ ST. SERVICE
THUMB BUTTE RANGER DISTRICT
PRESCOTT, ARIZONA

FEB 19 1975

RECEIVED

February 17, 1975

Mr. Lee Poague
District Ranger
Thumb Butte District
Prescott National Forest
P. O. Box 2549
Prescott, Arizona 86301

RE: Elliot Claim Group

Dear Mr. Poague:

In reference to our January 2, 1975 Notice of Intent to Operate the Elliot Claim Group, the Inspiration Consolidated Copper Company would like to notify you of a change in our plans.

At this time, a drilling rig has been moved into the Elliot Claim area in Section 35 T13N 1W.

Crews working on the drill rig will be using existing roads and cattle gates and fences will be left closed.

Again, as we stated in our previous letter to you, any change or modifications in our plans that will affect National Forest land, you will be notified.

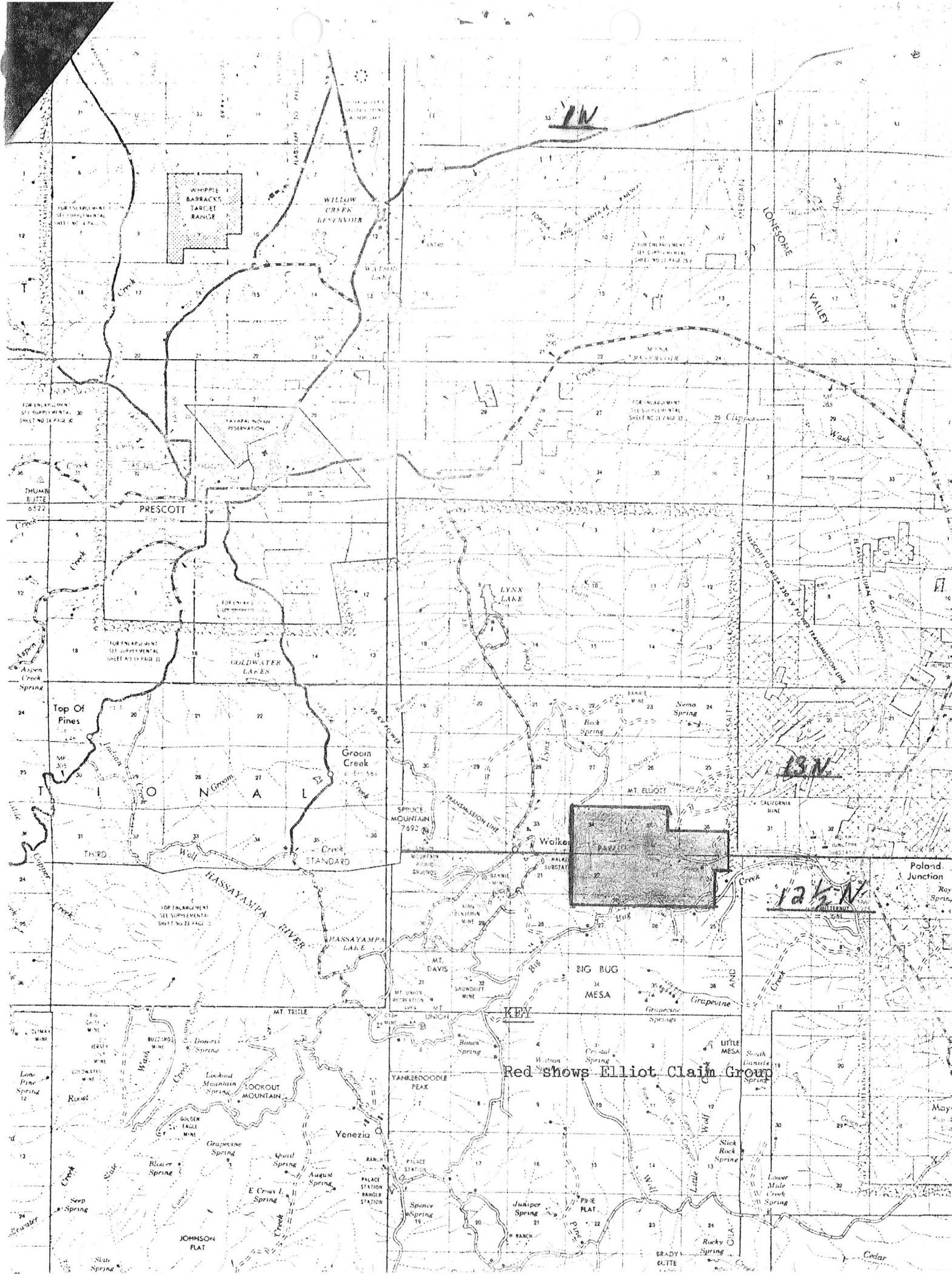
Very truly yours,

Thomas J. Montgomery

Thomas J. Montgomery
Property Superintendent

TJM:ct

[illegible]



EUGENE GULCH MINING AND MILLING CORP.

YAVAPAI COUNTY
T13N R1W Sec 35

MILS Yavapai Index #1071B (Eugene Property)

USGS Poland Junction topo map

May 27, 1957

YAVAPAI COUNTY

EUGENE GULCH MINING & MILLING CORP.

This property idle.

MARK GEMMILL

mp

DEPT. MINERAL RESOURCES
RECEIVED
JUN 2 1942
PHOENIX, ARIZONA

MILL

By A. C. Nebeker

May 25th, 1942.

EUGENE GULCH MINING &
MILLING CORP.

F.A. OLSEN Pres.
900 Sunny Slope Blvd.
Pasadena, Calif.

This mill is located up Eugene Gulch 3 miles west of Poland on a good auto road with exception of last mile which is a little rough.

This mill is for sale, price for both mine and mill asked \$10,000

The mill is flotation type of 25 to 40 tons capacity.

65 H. P. Primus Oil Engine, Ball Mill, 1 rake classifier, 3 Groch Cells ore feeder, crusher, starter units, settling tanks, Drive shaft with pulleys, belts, Buildings, 6 H.P. Mine Hoist with cable, 2 mine cars, 6 H.P. engine pump. 2 minebuckets, 2 mine cars, one Jackhammer, One six ton Ford Truck 6 good tires. 2 assay balances and some other assay equipment.

4 mining claims.

CLAIMS

MOUNTAIN DRIVER-BK 36 Page 540 Yavapai
Celestity Lane - 81 " 18 "
- 141 " 273 "
Zona Ann

A. C. Nebeker