



CONTACT INFORMATION

Mining Records Curator
Arizona Geological Survey
1520 West Adams St.
Phoenix, AZ 85007
602-771-1601
<http://www.azgs.az.gov>
inquiries@azgs.az.gov

The following file is part of the

Arizona Department of Mines and Mineral Resources Mining Collection

ACCESS STATEMENT

These digitized collections are accessible for purposes of education and research. We have indicated what we know about copyright and rights of privacy, publicity, or trademark. Due to the nature of archival collections, we are not always able to identify this information. We are eager to hear from any rights owners, so that we may obtain accurate information. Upon request, we will remove material from public view while we address a rights issue.

CONSTRAINTS STATEMENT

The Arizona Geological Survey does not claim to control all rights for all materials in its collection. These rights include, but are not limited to: copyright, privacy rights, and cultural protection rights. The User hereby assumes all responsibility for obtaining any rights to use the material in excess of "fair use."

The Survey makes no intellectual property claims to the products created by individual authors in the manuscript collections, except when the author deeded those rights to the Survey or when those authors were employed by the State of Arizona and created intellectual products as a function of their official duties. The Survey does maintain property rights to the physical and digital representations of the works.

QUALITY STATEMENT

The Arizona Geological Survey is not responsible for the accuracy of the records, information, or opinions that may be contained in the files. The Survey collects, catalogs, and archives data on mineral properties regardless of its views of the veracity or accuracy of those data.

07/07/93

ARIZONA DEPARTMENT OF MINES AND MINERAL RESOURCES FILE DATA

PRIMARY NAME: E T GROUP

ALTERNATE NAMES:

BLACK DIAMOND MINE

LA PAZ COUNTY MILS NUMBER: 823--

LOCATION: TOWNSHIP 2 N RANGE 11 W SECTION 22 QUARTER NW
LATITUDE: N 33DEG 30MIN 11SEC LONGITUDE: W 113DEG 23MIN 03SEC
TOPO MAP NAME: LONE MOUNTAIN - 7.5 MIN

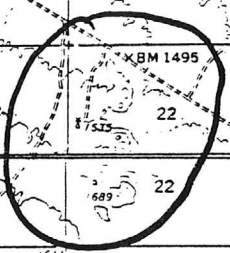
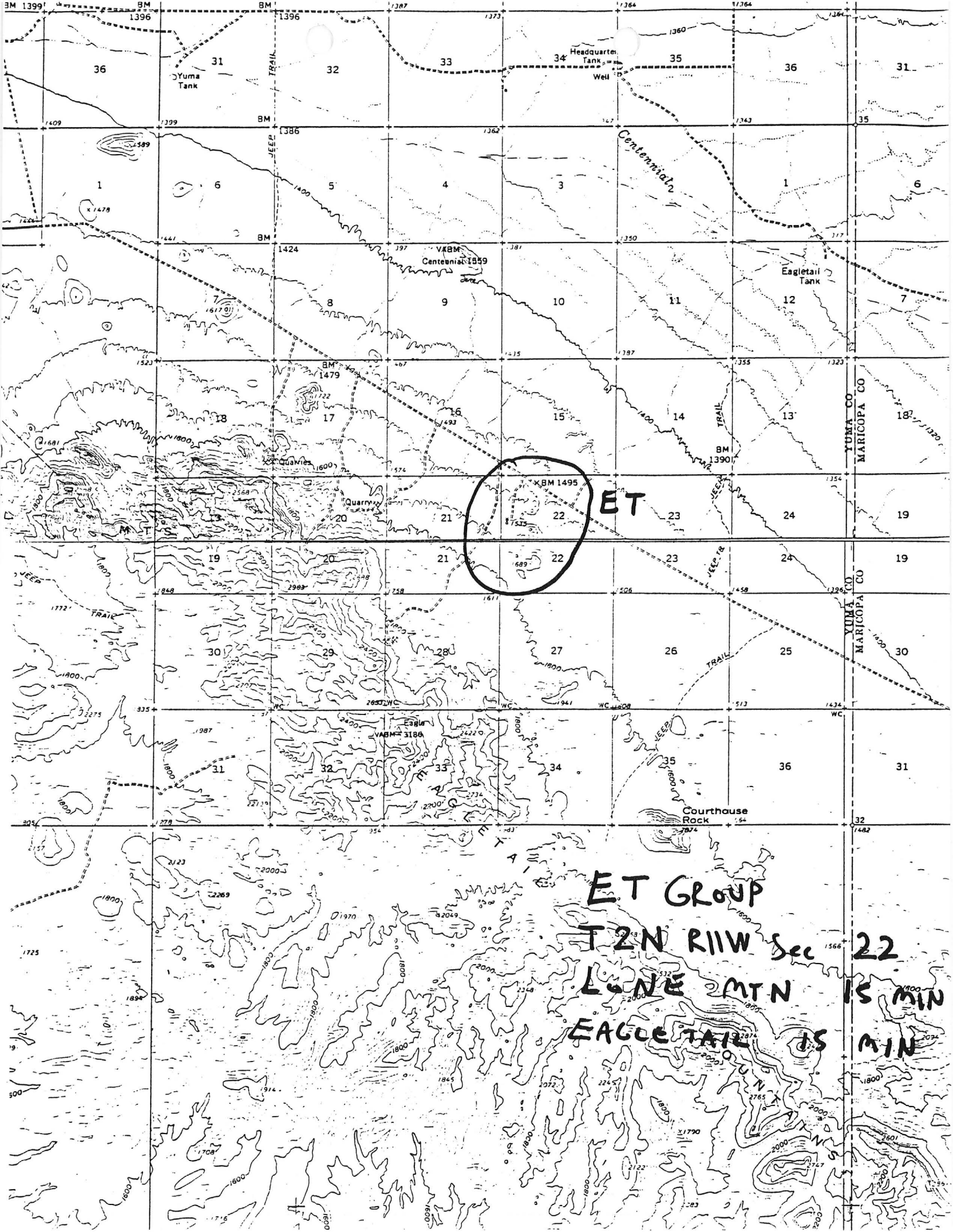
CURRENT STATUS: EXP PROSPECT

COMMODITY:

COPPER OXIDE
GOLD
SILICON SMELTER FLUX

BIBLIOGRAPHY:

ADMMR E T GROUP FILE



ET

ET GROUP
T2N R11W Sec 22
LONE MTN IS MIN
EAGLE TAIL IS MIN

E T GROUP

LA PAZ COUNTY

NJN WR 9/2/88: Rodney Frisby, dba Frisby Mining, home phone 482-5359, work phone 230-1334, brought in the start of a data package on the E T Group, La Paz County, along with map and information. This gold occurrence consists of NW striking, NE dipping parallel brecciated (?) mineralized zones. Numerous samples of rock outcrops taken to date show values in the .03 - .07 range. This property has numerous gold prospect pits which are not shown on the 15 minute topo covering the property. Mr. Frisby will provide additional data on the property once he has acquired his land position.

ARIZONA DEPARTMENT OF MINES AND MINERAL RESOURCES

VERBAL INFORMATION SUMMARY

1. Mine file: ET GROUP
2. Mine name if different from above:
3. County: La Paz
4. Information from: Rod Frisby ✓
Company: Frisby Mining ✓
Address: 300 W. Clarendon #250
Phoenix, AZ 85013
Phone: 482-5359 (home)
5. Summary of information received, comments, etc.:

Mr. Frisby reports that due to a disagreement with a partner, Bill Berridge, claims covering this property have been relocated as the B0 claims and the geologic and sample data that was developed have been lost. This winter will be spent gathering enough new data on the property to develop submittal packages.

Date: November 28, 1988

Nyal J. Niemuth, Mining Engineer

2222 East Camelback Road
Suite 122
Phoenix, Arizona 85016
Voice: (602) 954-8588
FAX: (602) 957-9557

2 Broadfield Court
Bushyheath, Hertfordshire
U.K. WD2-1AH
Voice: 81-950-9540
FAX: 81-950-5879

6-1993

ET GROUP file
La Paz County

Confidential Memorandum No. _____
Delivered to: _____

COPPER/GOLD MINE FOR SALE

BLACK DIAMOND MINE

- PROPERTY DESCRIPTION: 14 BLM claims and 1 mill site encompassing 300 plus acres located approximately 30 miles SW of Tonapah Arizona at the base of Eagletail Mountain. (See attached map's)
- IMPROVEMENTS: Mining operations started in Fall 1992. Mine camp and infrastructure were set up and a 300 foot long 7' x 8' decline tunnel was started with the goal to hit a vein showing on the surface 130 feet below the entrance to an old gold prospectors shaft. A vein rich in copper and showing good gold was hit in early 1993. An additional 400 feet of development tunnel has been blasted following the vein strike. (See attached Mine diagram)
- CURRENT STATUS: Production/screening/crushing of the high grade ore was commenced in early spring. Mining operations are being halted July 1, 1993 due to lack of processing capability.
- ORE QUALITY: Vein is averaging from 6% to 12.5% Cu & .21 to .33 ounces/ton of Au (vein is appx. 50% silica). (See attached Assay results)
- RESERVES: Ore accessible for production is estimated at 1,500 tons. Ore that can be developed by effecting mining plan is estimated at over 10,000 tons.

Black Diamond Mine Memorandum, Page 2.

POSSIBLE PORPHYRY:

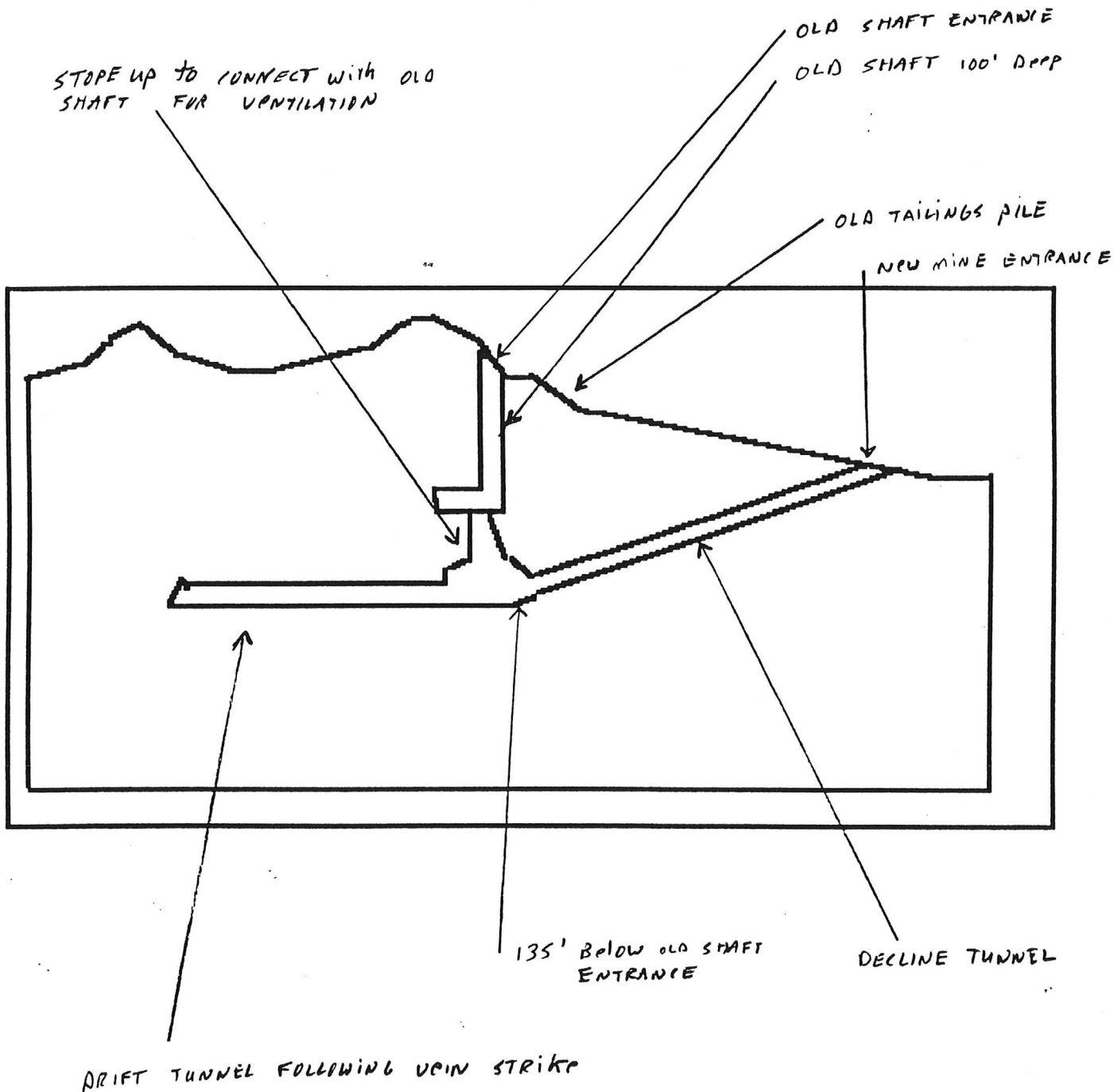
Mining engineers have concluded that all indications are present that a porphyry deposit exists on this site. Estimates of the potential size of this deposit range from 5 million to 30 million tons of minimum .5% Cu.

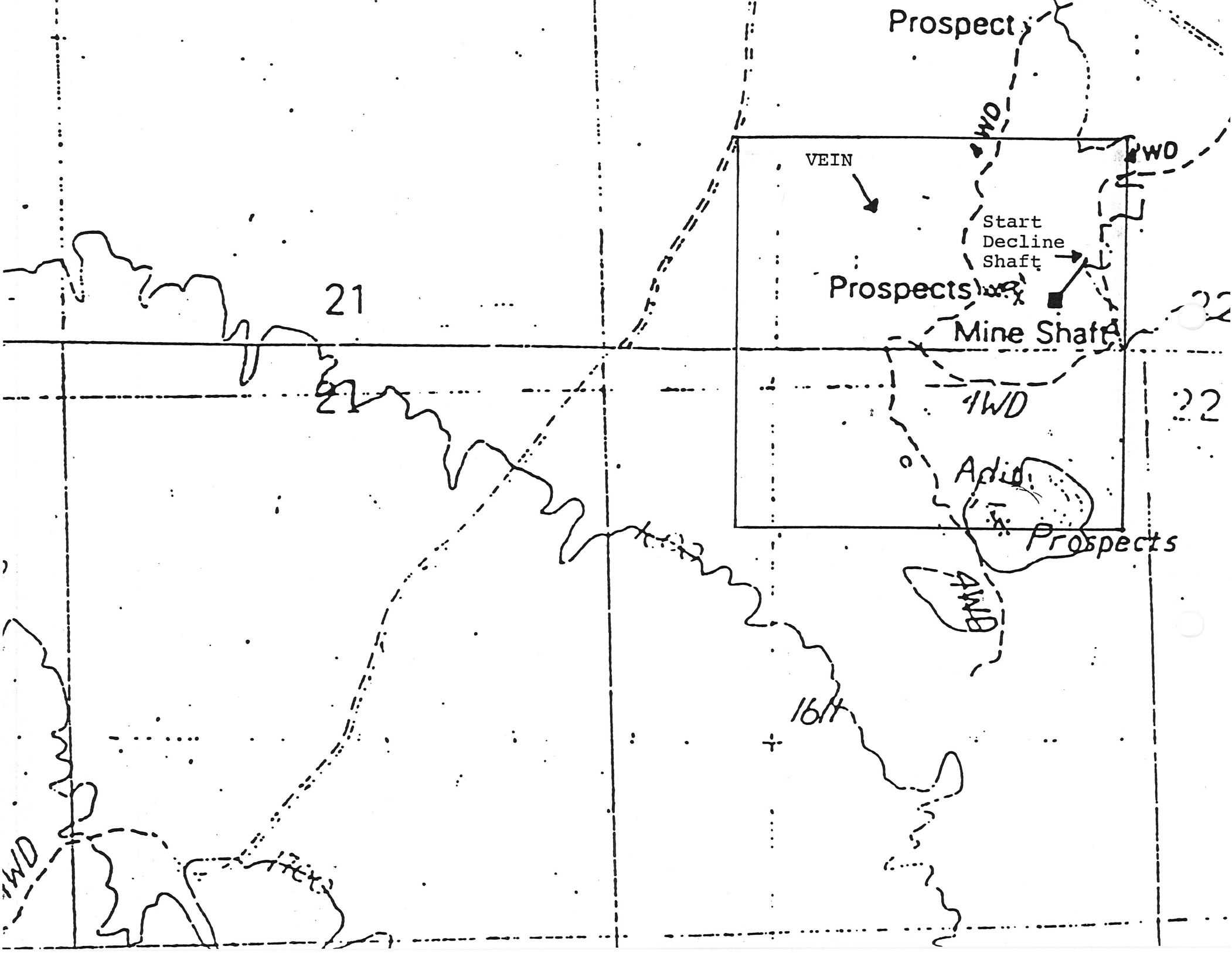
PRICE:

“ \$350,000 for the mine.
Mining and processing equipment including; underground loader and dump, screen & crusher, 10 ton dump, miners trailer, water tank, pumps, generator, electrowinning cell and other processing equipment is available at a negotiated prices.

For additional information contact: Rodney Frisby or John Berry
602-954-8588

BLACK DIAMOND MINE - SIDE VIEW





Prospect

VEIN

Start
Decline
Shaft

Prospects

Mine Shaft

1WD

Adit

Prospects

AMD

1614

21

22

22

1WD

1WD

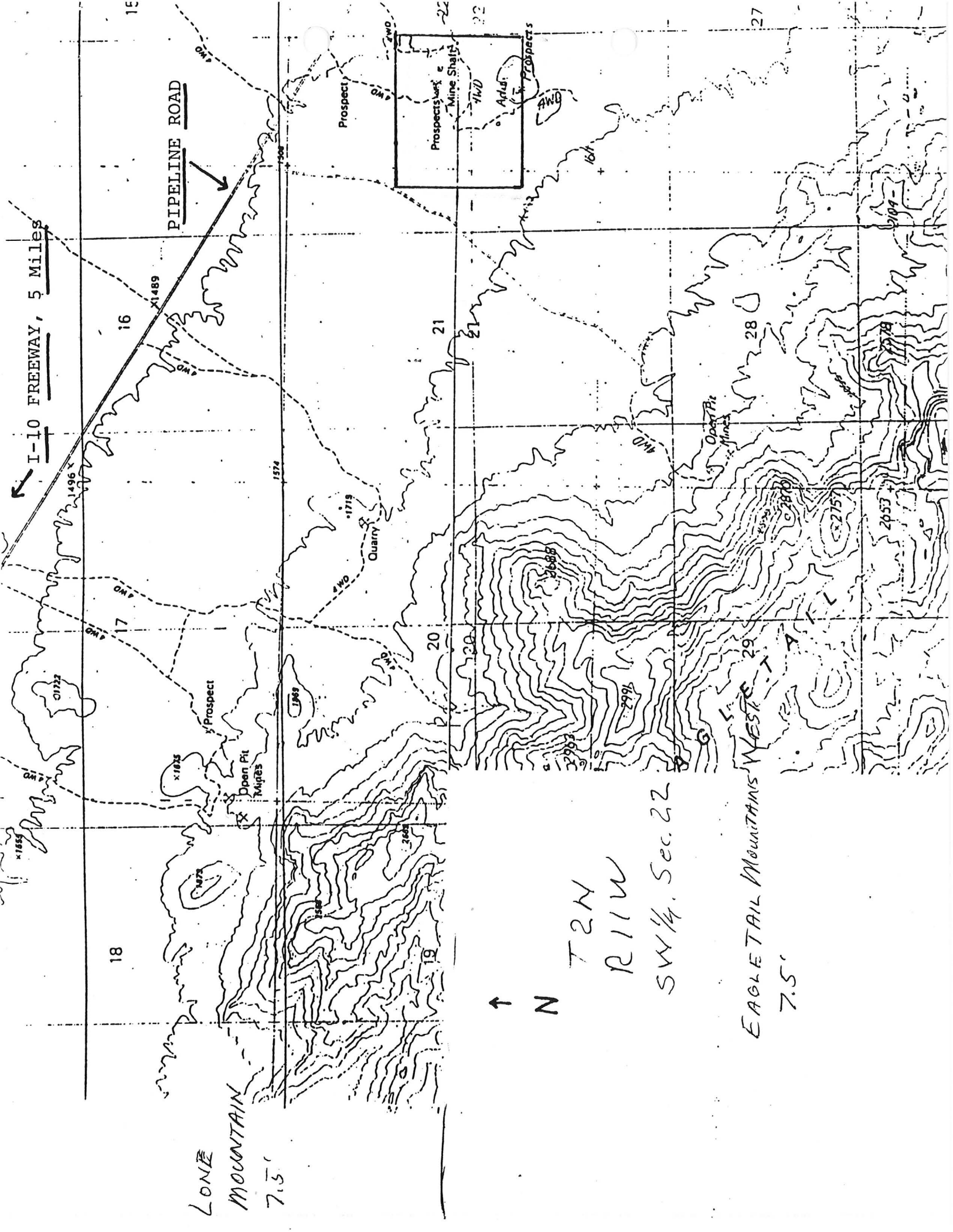
I-10 FREEWAY, 5 Miles

PIPELINE ROAD

LONG MOUNTAIN
7.5'

↑ N
T2N
R11W
SW 1/4, Sec 22

EAGLETAIL MOUNTAINS WEST
7.5'



Robert Shantz

Metallurgist

P.O. Box 650 • Carlisle Road • Duncan, Arizona 85534 • (602) 359-2654

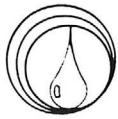
April 2, 1993

Mr. John Berry
Black Diamond Mining Co., Ltd.
2222 East Camelback Road, Suite 122
Phoenix, AZ 85016

ASSAY CERTIFICATE

Sample ID	Cu, %	Fe, %	Ag, oz/t	Au, oz/t	Silica, %
Vein	12.49	7.55	0.56	0.33	59.4
AA	13.78	19.25	0.92	0.81	32.1
#1	11.64		0.26	0.34	
#2	7.45	12.80	<0.10	0.042	49.4
#3	1.26		<0.10	0.16	
#4	0.59		<0.10	0.010	





Arizona Testing Laboratories

817 West Madison Street □ Phoenix, Arizona 85007 □ 602/254-6181

ET GROUP

For Mr. Rod Frisby
300 W. Clarendon, #250
Phoenix, Arizona 85013

Date December 16, 1988

ASSAY CERTIFICATE

LAB NO.	IDENTIFICATION	OZ. PER TON		PERCENTAGES			
		GOLD	SILVER	COPPER			
2967	28117	0.02	trace				
	28118	trace	trace				
	28119	nil	trace				

Respectfully submitted,

ARIZONA TESTING LABORATORIES

Claude E. McLean, Jr.
Claude E. McLean, Jr.



(0112) For Tucson

E. T. Group

 OMAC SYSTEMS

 * 521 E BROADWAY RD *
 * MESA, AZ 85204 *
 * 602-962-5999 *

ANALYTICAL REPORT



CLIENT: Rooney Frisby DATE: 8/ 3/88
 300 W Clarendon Ste 250 WORK ORDER NUMBER: 7010
 Phoenix AZ 85003

Omac Systems Analysis Results E/ 3/88 Page: 1

SAMPLE NUMBER: 701001 TYPE OF ANALYSIS: Fire Assay
 SAMPLE DESCRIPTION: Alan N
 NOTES:
 Au Ag
 0.0512 0.1021
 oz/ton oz/ton

SAMPLE NUMBER: 701002 TYPE OF ANALYSIS: Fire Assay
 SAMPLE DESCRIPTION: Alan S
 NOTES:
 Au Ag
 0.0612 0.2616
 oz/ton oz/ton

SAMPLE NUMBER: 701003 TYPE OF ANALYSIS: Fire Assay
 SAMPLE DESCRIPTION: Red Hole #1
 NOTES:
 Au Ag
 0.0913 0.1573
 oz/ton oz/ton

SAMPLE NUMBER: 701004 TYPE OF ANALYSIS: Fire Assay
 SAMPLE DESCRIPTION: Lower Vein
 NOTES:
 Au Ag
 NIL NIL

SAMPLE NUMBER: 701005 TYPE OF ANALYSIS: Fire Assay
 SAMPLE DESCRIPTION: Ridge #1
 NOTES:
 Au Ag
 0.0022 0.0613
 oz/ton oz/ton

SAMPLE NUMBER: 701006 TYPE OF ANALYSIS: Fire Assay

SAMPLE DESCRIPTION: 1st Hole

NOTES:

Au	Ag
0.0690	0.0532
oz/ton	oz/ton

SAMPLE NUMBER: 701007 TYPE OF ANALYSIS: Fire Assay

SAMPLE DESCRIPTION: 2nd Hole

NOTES:

Au	Ag
0.0665	0.0709
oz/ton	oz/ton

SAMPLE NUMBER: 701008 TYPE OF ANALYSIS: Fire Assay

SAMPLE DESCRIPTION: Hi Grade #1

NOTES:

Au	Ag
0.0797	0.0946
oz/ton	oz/ton

SAMPLE NUMBER: 701009 TYPE OF ANALYSIS: Fire Assay

SAMPLE DESCRIPTION: Valley Cut #1

NOTES:

Au	Ag
0.0304	0.0878
oz/ton	oz/ton

NOTE: We believe this analysis to be accurate and correct to the best of our ability. Results are reported with four decimal places, however. Gold values are accurate to three decimals or five digits and Silver values are accurate to two decimals or four digits. Bullions are accurate to two decimal places.

We Appreciate Your Business!

MINE AND PROSPECT FIELD VISIT DATA SUMMARY

Sheet 1 of 2

COMMODITIES Au, Cu

MILS ID No. 823 Date 12-8-88

ENGINEER Nyal J. Niemuth

INFORMATION FROM: Rod Frisby

PROPERTY SUMMARY

I. MINE NAME E T Group OTHER POSSIBLE NAMES B O Claims
INCLUDING ANY CLAIM NAMES NOTED

II. LOCATION: T 2N R 11W SEC(S) 22 NW MINE DISTRICT _____
ELEV. _____ COUNTY La Paz TOPO QUAD. Eagle Tail Mts. 15 Min
DIRECTIONS West of gas pipeline road on jeep roads

MAP ATTACHED _____

III. OWNERSHIP: NAME Rod Frisby PHONE h - 482-5359
ADDRESS: 300 W. Clarendon #250, Phoenix, AZ 85013
COMPANY NAME IF ANY: Frisby Mining
PERTINENT PEOPLE _____

IV. PROPERTY AND HOLDINGS: unpatented mining claims

V. PAST PRODUCTION - NOTED, KNOWN, PROBABLE, UNKNOWN, NONE none

VI. CURRENT STATUS: Prospect

VII. WORKINGS: 1 shaft about 100' deep no collar but open with rope ladder at time of
visit, 1 adit approximately 75' on dike intruding leucocratic granite, hand
dug well in wash contained water

VIII. GEOLOGY AND MINERALOGY: DEPOSIT TYPE: volcanic dike associated
LENGTH: +1500' WIDTH: zone up to 500' VEIN STRIKE N45W DIP near vertical
HOST ROCK: tertiary quartz porphyry volcanics and leucocratic porphyritic granite
ECONOMIC MINERALS: gold, malachite, minor chalcopryrite, hematite - often earthy
sometimes as pyritohedron pseudomorphs
COMMENTS: minor quartz veins and breccia associated with northwest trending
feldspar porphyry dikes. Spotty alteration and mineralization, locally abundant
earthy hematite, silicification and quartz vein stringers.

IX. EQUIPMENT ON SIGHT: none

X. SAMPLING: NOTE TYPE IF ANY, DRILLING? 3 taken during visit, descriptions below,
owner has previously samples dumps and prospect pits with varying results,
some show fine colors by panning, 2 drill holes - no data likely shallow

XI. REFERENCES AND REMARKS dike/alteration zones should be mapped and sampled to
evaluate precious metal mineralization.

<u>Sample Number</u>	<u>Gold oz/ton</u>	<u>Silver oz/ton</u>	<u>Sample descriptions</u>
28117	.02	TR	"Fresh" porphyry dike, 20' north of main shaft, 20' wide chip sample east of main zone, minor silicification.
28118	TR	TR	20' wide chip west of and including mineralized zone at main shaft. Sample crosses volcanic porphyry and granite, visible malachite and hematite in sample.
28119	NIL	TR	Sample taken 200' north of main shaft in red colored prospect pit, 20' wide chip sample including 12' of bleached and quartz veined material. Mr. Frisby reports panning this material shows colors.

Above samples were analyzed by AA at Arizona Testing Labs. Copy of certificate attached.

