



## **CONTACT INFORMATION**

Mining Records Curator  
Arizona Geological Survey  
1520 West Adams St.  
Phoenix, AZ 85007  
602-771-1601  
<http://www.azgs.az.gov>  
[inquiries@azgs.az.gov](mailto:inquiries@azgs.az.gov)

The following file is part of the

Arizona Department of Mines and Mineral Resources Mining Collection

## **ACCESS STATEMENT**

These digitized collections are accessible for purposes of education and research. We have indicated what we know about copyright and rights of privacy, publicity, or trademark. Due to the nature of archival collections, we are not always able to identify this information. We are eager to hear from any rights owners, so that we may obtain accurate information. Upon request, we will remove material from public view while we address a rights issue.

## **CONSTRAINTS STATEMENT**

The Arizona Geological Survey does not claim to control all rights for all materials in its collection. These rights include, but are not limited to: copyright, privacy rights, and cultural protection rights. The User hereby assumes all responsibility for obtaining any rights to use the material in excess of "fair use."

The Survey makes no intellectual property claims to the products created by individual authors in the manuscript collections, except when the author deeded those rights to the Survey or when those authors were employed by the State of Arizona and created intellectual products as a function of their official duties. The Survey does maintain property rights to the physical and digital representations of the works.

## **QUALITY STATEMENT**

The Arizona Geological Survey is not responsible for the accuracy of the records, information, or opinions that may be contained in the files. The Survey collects, catalogs, and archives data on mineral properties regardless of its views of the veracity or accuracy of those data.

12/18/85

ARIZONA DEPARTMENT OF MINES AND MINERAL RESOURCES FILE DATA

PRIMARY NAME: EMPIRE ONYX

ALTERNATE NAMES:

YAVAPAI COUNTY MILS NUMBER: 1355

LOCATION: TOWNSHIP 15 N RANGE 6 E SECTION 31 QTR. NW

LATITUDE: LONGITUDE:

TOPO MAP NAME: LAKE MONTEZUMA 7.5

CURRENT STATUS: PRODUCER

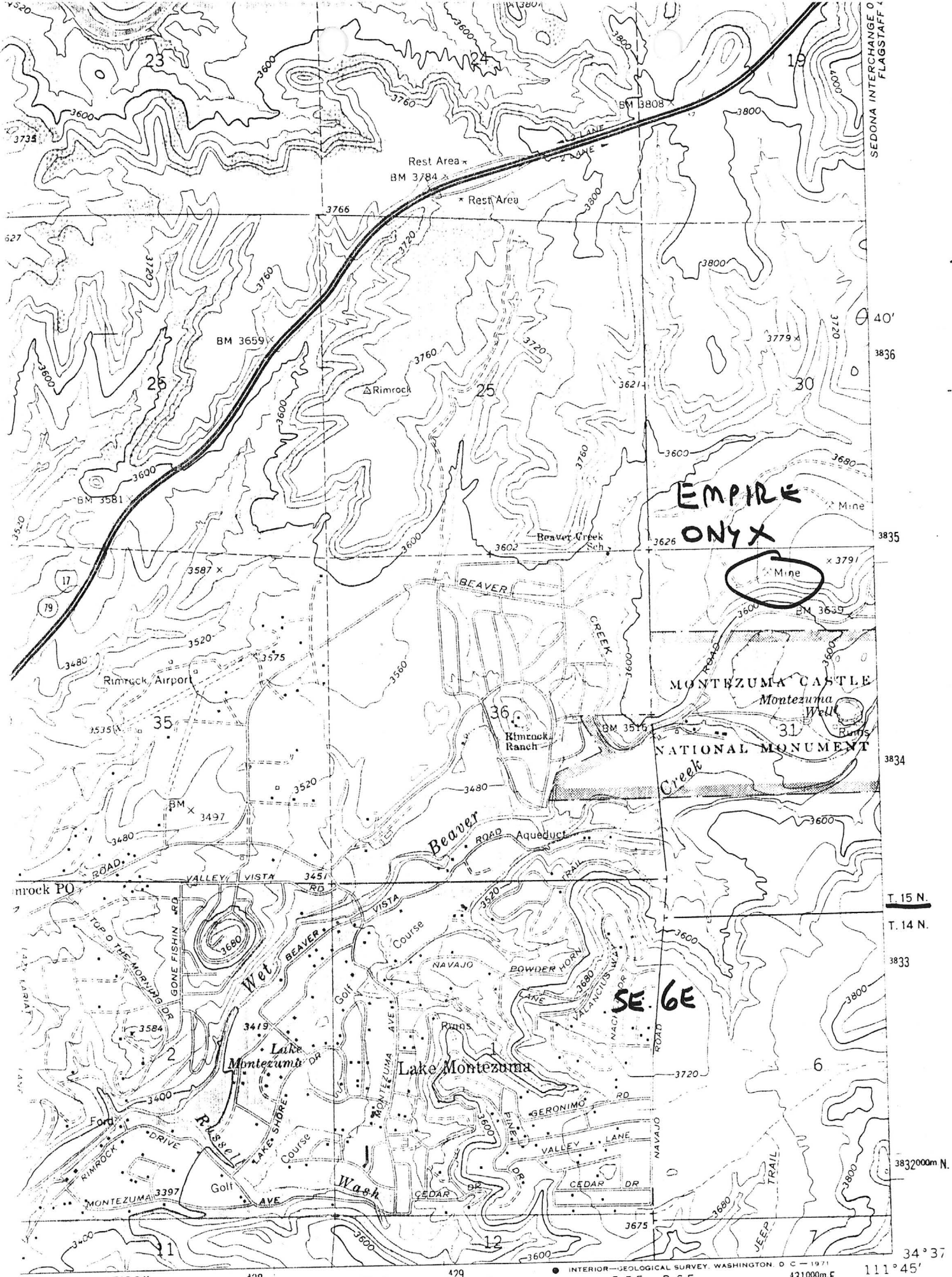
COMMODITY:

STONE DIMENSION ONYX

GEMSTONE ONYX

BIBLIOGRAPHY:

ADMMR EMPIRE ONYX



SEDONA INTERCHANGE 0  
FLAGSTAFF 1

EMPIRE  
ONYX



SE 6E

LAKE MONTEZUMA 7.5

INTERIOR—GEOLOGICAL SURVEY, WASHINGTON, D. C.—1971  
R. 5 E. R. 6 E. 431000m E.

ROAD CLASSIFICATION

Primary highway, all weather. Light-duty road, all weather.

EMPIER ONXY

YAVAPAI COUNTY

NJN WR 8/19/88: Willie Rozza (card) called and reported that he has staked his claims and filed his operating plans with the Forest Service for his claim groups, Empire Onyx (file) and Empire 2 Onyx (file) Yavapai County.

-----

## ARIZONA DEPARTMENT OF MINES AND MINERAL RESOURCES

VERBAL INFORMATION SUMMARY

1. Mine file: 1. EMPIRE ONYX 2. EMPIRE II ONYX
2. Mine name if different from above:
3. County: Yavapai
4. Information from: Willy Rozza

Company:

Address: 4201 E. Camelback #93

Phoenix, AZ 85013

Phone: 493-3255

5. Summary of information received, comments, etc.:

Mr. Rozza reports the terrazzo used in Phoenix's Sky Harbor Airport was made from these travertine deposits. Mr. Rozza was looking to obtain the engineering material tests or any other data on this material.

Mr. Rozza continues to develop data on other marble quarries in the state. Relating to a joint venture or some similar arrangement he also reports the loss of \$80,000 worth of quarry equipment to Red Mountain Mining.

Date: December 7, 1988

Nyal J. Niemuth, Mining Engineer

DEPARTMENT OF MINES & MINERAL RESOURCES

FIELD VISIT SUMMARY

ENGINEER: Nyal J. Niemth

DATE: April 23, 1987

MINE: Empire Onyx Quarry

COUNTY: Yavapai

Visited the Empire Onyx Quarry (file) Yavapai County. This quarry is located in the upper travertine member of the Camp Verde Formation. The travertine is tan to buff with only occasional color banding present. The material weathers to a light grey. The quarry had been started by the drilling and wedging of cubic yard blocks, most of which appear to remain on site. This development was done in an exploratory fashion, searching for better material at depth and laterally. I would estimate that less than 300 cubic yards has been quarried. The material's rather plain appearance has limited its value and marketability. It is of sufficient quality to be used in building facing, but not as an interior decorative facing.

Arizona Department of Mines and Mineral Resources

VERBAL INFORMATION SUMMARY

May be Reproduced

1. Information from: C.E. "Whitey" Webster, President - Western States Stone  
Address: 2830 Grand Ave., Phoenix, AZ 85017 - Phone 253-2018
2. Mine: Empire Onyx
3. ADMMR Mine File Empire Onyx (new)
4. County: Yavapai
5. District \_\_\_\_\_
6. Township 15 N Range 6 E Sec(s) 31 NW $\frac{1}{4}$
7. Location: as on attached map
8. No. of Claims - Patented \_\_\_\_\_ Unpatented 1
9. Owner (if different from above) same as above
10. Address: \_\_\_\_\_
11. Operating Company: Western States Stone
12. Pertinent People and/or Firm: C.E. "Whitey" Webster
13. Commodities: Onyx building stone, onyx gemstone
14. Operational Status: active
15. Summary of information received, comments, etc.: \_\_\_\_\_

This occurrence shown on the Lake Montezuma 7.5 Quad, should be added to  
Yavapai County MILS. #1355

Date: 9/5/85

(Signature)

*Myrl J. Nims*

ADMMR