



## **CONTACT INFORMATION**

Mining Records Curator  
Arizona Geological Survey  
1520 West Adams St.  
Phoenix, AZ 85007  
602-771-1601  
<http://www.azgs.az.gov>  
[inquiries@azgs.az.gov](mailto:inquiries@azgs.az.gov)

The following file is part of the

Arizona Department of Mines and Mineral Resources Mining Collection

## **ACCESS STATEMENT**

These digitized collections are accessible for purposes of education and research. We have indicated what we know about copyright and rights of privacy, publicity, or trademark. Due to the nature of archival collections, we are not always able to identify this information. We are eager to hear from any rights owners, so that we may obtain accurate information. Upon request, we will remove material from public view while we address a rights issue.

## **CONSTRAINTS STATEMENT**

The Arizona Geological Survey does not claim to control all rights for all materials in its collection. These rights include, but are not limited to: copyright, privacy rights, and cultural protection rights. The User hereby assumes all responsibility for obtaining any rights to use the material in excess of "fair use."

The Survey makes no intellectual property claims to the products created by individual authors in the manuscript collections, except when the author deeded those rights to the Survey or when those authors were employed by the State of Arizona and created intellectual products as a function of their official duties. The Survey does maintain property rights to the physical and digital representations of the works.

## **QUALITY STATEMENT**

The Arizona Geological Survey is not responsible for the accuracy of the records, information, or opinions that may be contained in the files. The Survey collects, catalogs, and archives data on mineral properties regardless of its views of the veracity or accuracy of those data.

ARIZONA DEPARTMENT OF MINES AND MINERAL RESOURCES AZMILS DATA

PRIMARY NAME: EMMETT LEE #1

ALTERNATE NAMES:  
EMMETT PATENT CLAIMS 2141

COCONINO COUNTY MILS NUMBER: 126

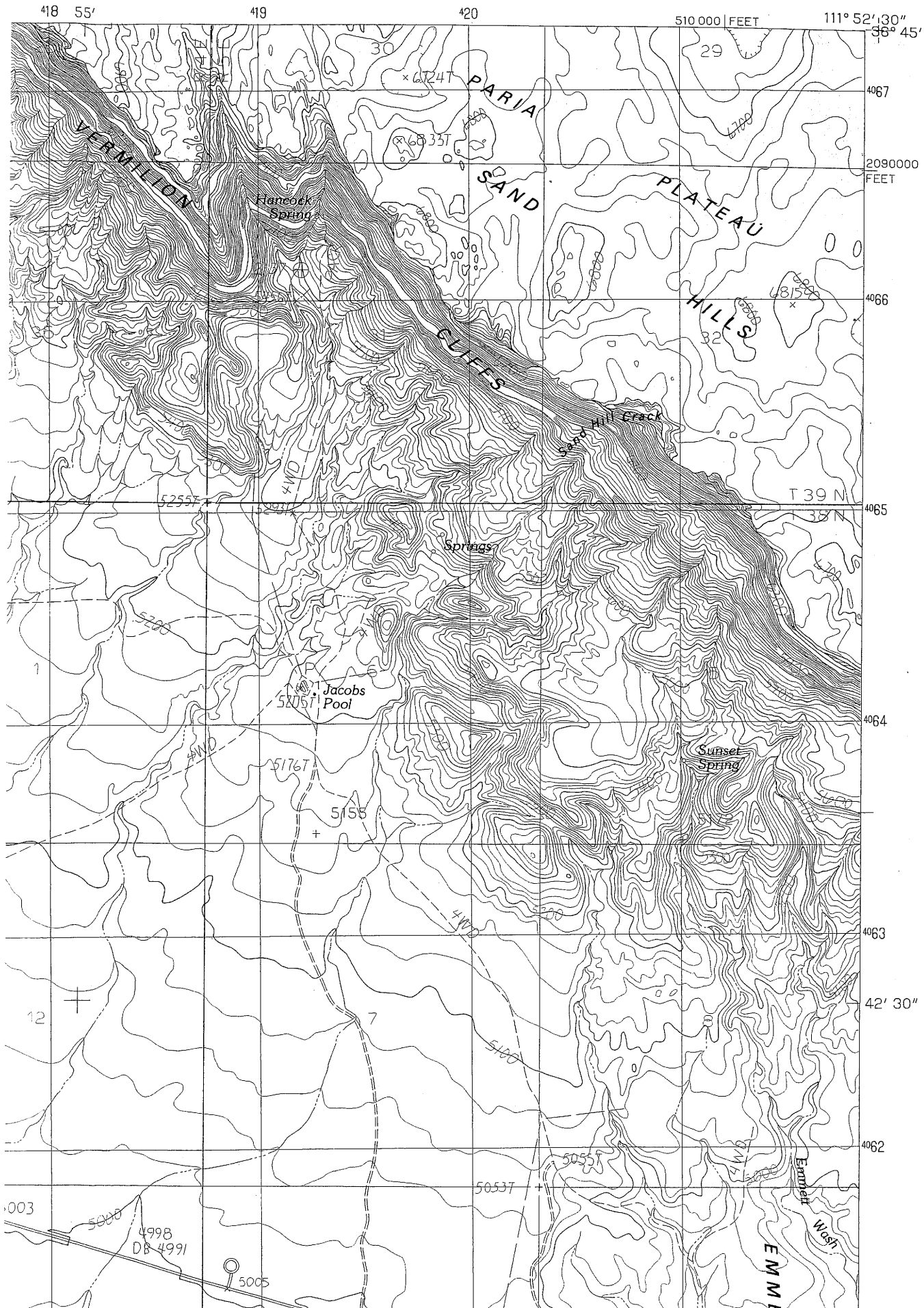
LOCATION: TOWNSHIP 38 N RANGE 5 E SECTION 8 QUARTER E2  
LATITUDE: N 36DEG 42MIN 10SEC LONGITUDE: W 111DEG 52MIN 31SEC  
TOPO MAP NAME: EMMETT WASH - 15 MIN

CURRENT STATUS: UNKNOWN

COMMODITY:  
UNKNOWN

BIBLIOGRAPHY:  
BLM MINING DISTRICT SHEET 112  
ADMMR EMMETT LEE #1 FILE

EMMETT HILL QUADRANGLE  
ARIZONA-COCONINO CO.  
7.5 MINUTE SERIES (TOPOGRAPHIC)



DEPARTMENT OF MINERAL RESOURCES

STATE OF ARIZONA

FIELD ENGINEERS REPORT

UTAH SOUTHERN OIL - NAVAJO LEASE  
Mine EMMETT LEE # 1 & others

Date June 5, 1957

District CAMERON

Engineer B. J. Squire

Subject: Activity Report

LOCATIONS: Mines are located 3 to 7 miles SE of Cameron on the NE side of the  
Little Colorado River.

ORE: Open pit operations in the Chinle formation are producing plus 0.22%  
 $U_3O_8$  for shipment to Rare Metals Mill at Tuba City. Considerable  
lower grade ore is stockpiled.

OPERATOR: Utah Southern Oil Company, Page Blakemore, Jr., Mgr.  
Cameron, Arizona

TUBA CITY MILL  
RARE METALS CORP.

COCOAVIDO COUNTY

Visited the Tuba City Mill of Rare Metals Corp. and obtained from Mr. Gommell, Supt., the August production figures, sources of mill feed, etc.

The milling rate and grade of ore milled in August was normal. Receipts of ore were as follows:

Orphan Mine	6576 tons	.28	U <sub>3</sub> O <sub>8</sub>
Ramco & Huskon properties	48 "	.30	
Hope No. 3 (H.C. Smith)	474 "	.48	
Twilight	91 "		
Utah Southern	<u>105</u>		
	7254		

The balance of the August mill feed (total 9300) was obtained from the mill stockpile. Cameron shipments were unusually low because of low production by Cameron Mining Co. during Blakemore's absence of more than 2 weeks from the district and because of equipment breakdown at another property. The Orphan output was low but is expected to be higher in September, perhaps 7500 tons or better.


Interviewed Ray D. Sisher, Land Operations Officer at the Tuba City Navajo sub-agency office. He reported no new leasing activity and no mine work in progress in the White Mesa region.

TRAVIS P. LANE - Weekly Report - 9-17-60

April 12, 1961 - Visited the Rare Metals Co. Mill at Tuba City. Mr. Gommell discussed current activity and the outlook which is uncertain because of unsolved problems as between AEC - Rare Metals Co. - Orphan Mine - National Park Service. Another pressing problem is posed by the increasing lime content in the ore milled (over 21% CaO in March). Milling costs due to this excessive lime have just about reached an economic limit and a changeover to a carbonate circuit is imperative. The present acid circuit would be maintained to handle the small amount of non-carbonate ore coming from the Cameron area.

April 13, 1961 - Visited the office of Cameron Mining Co. A Mr. George Bastedo together with Donald P. Wilson (notable author) bought Steinberger's half interest in the company, and they are continuing work with Page Blakemore owner of the other half.

TRAVIS P. LANE - Weekly Report - 4-15-61



ENG. & MINING JOUR. 6-57



Page Blakemore, Jr.  
Cameron Mining Company  
Cameron, Ariz.

Operator EMMETT LEE #1 & others, Sept. 1958  
& Feb. 1959

Active mine list.