



CONTACT INFORMATION

Mining Records Curator
Arizona Geological Survey
1520 West Adams St.
Phoenix, AZ 85007
602-771-1601
<http://www.azgs.az.gov>
inquiries@azgs.az.gov

The following file is part of the

Arizona Department of Mines and Mineral Resources Mining Collection

ACCESS STATEMENT

These digitized collections are accessible for purposes of education and research. We have indicated what we know about copyright and rights of privacy, publicity, or trademark. Due to the nature of archival collections, we are not always able to identify this information. We are eager to hear from any rights owners, so that we may obtain accurate information. Upon request, we will remove material from public view while we address a rights issue.

CONSTRAINTS STATEMENT

The Arizona Geological Survey does not claim to control all rights for all materials in its collection. These rights include, but are not limited to: copyright, privacy rights, and cultural protection rights. The User hereby assumes all responsibility for obtaining any rights to use the material in excess of "fair use."

The Survey makes no intellectual property claims to the products created by individual authors in the manuscript collections, except when the author deeded those rights to the Survey or when those authors were employed by the State of Arizona and created intellectual products as a function of their official duties. The Survey does maintain property rights to the physical and digital representations of the works.

QUALITY STATEMENT

The Arizona Geological Survey is not responsible for the accuracy of the records, information, or opinions that may be contained in the files. The Survey collects, catalogs, and archives data on mineral properties regardless of its views of the veracity or accuracy of those data.

PRINTED: 01/27/2003

ARIZONA DEPARTMENT OF MINES AND MINERAL RESOURCES AZMILS DATA

PRIMARY NAME: ELLISON CLAY

ALTERNATE NAMES:

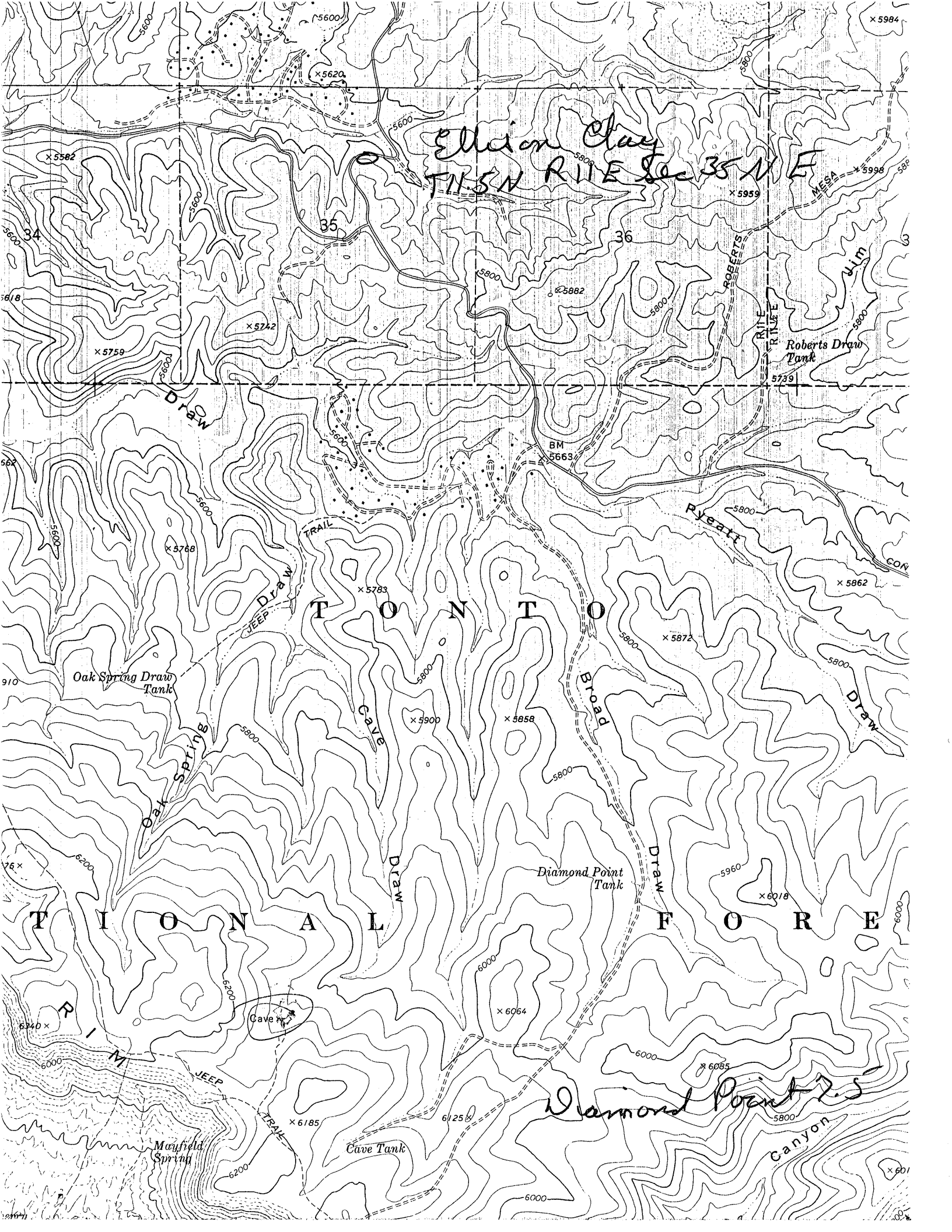
GILA COUNTY MILS NUMBER: 566

LOCATION: TOWNSHIP 11.5N RANGE 11 E SECTION 35 QUARTER NE
LATITUDE: N 34DEG 20MIN 39SEC LONGITUDE: W 111DEG 11MIN 33SEC
TOPO MAP NAME: DIAMOND POINT - 7.5 MIN

CURRENT STATUS: RAW PROSPECT

COMMODITY:
CLAY

BIBLIOGRAPHY:
ADMMR ELLISON CLAY FILE



Elision Clay
TN 5N R 15E Sec 35 NE

T O N T O

T I O N A L

F O R E

Diamond Point 2.5

ELLISON CLAY

GILA COUNTY

KAP WR 10/4/85: In the company of Dick Wall, visits were made to a number of clay occurrences in the Diamond Rim area of Gila County. Mr. Wall collected a sample of a clayey material from a road cut on the south side of Control Road in NE, Sec 35, T11.5N R11E, Gila County. He plans to test the clay. This site has been named Ellison Clay. The exposure was small and contained a dark brown clay material intermixed with organic debris.
