



CONTACT INFORMATION

Mining Records Curator
Arizona Geological Survey
1520 West Adams St.
Phoenix, AZ 85007
602-771-1601
<http://www.azgs.az.gov>
inquiries@azgs.az.gov

The following file is part of the

Arizona Department of Mines and Mineral Resources Mining Collection

ACCESS STATEMENT

These digitized collections are accessible for purposes of education and research. We have indicated what we know about copyright and rights of privacy, publicity, or trademark. Due to the nature of archival collections, we are not always able to identify this information. We are eager to hear from any rights owners, so that we may obtain accurate information. Upon request, we will remove material from public view while we address a rights issue.

CONSTRAINTS STATEMENT

The Arizona Geological Survey does not claim to control all rights for all materials in its collection. These rights include, but are not limited to: copyright, privacy rights, and cultural protection rights. The User hereby assumes all responsibility for obtaining any rights to use the material in excess of "fair use."

The Survey makes no intellectual property claims to the products created by individual authors in the manuscript collections, except when the author deeded those rights to the Survey or when those authors were employed by the State of Arizona and created intellectual products as a function of their official duties. The Survey does maintain property rights to the physical and digital representations of the works.

QUALITY STATEMENT

The Arizona Geological Survey is not responsible for the accuracy of the records, information, or opinions that may be contained in the files. The Survey collects, catalogs, and archives data on mineral properties regardless of its views of the veracity or accuracy of those data.

PRINTED: 12/10/2002

ARIZONA DEPARTMENT OF MINES AND MINERAL RESOURCES AZMILS DATA

PRIMARY NAME: ELLEN, DELLA & VANSUELLA

ALTERNATE NAMES:

SANTA CRUZ COUNTY MILS NUMBER: 114A

LOCATION: TOWNSHIP 21 S RANGE 15 E SECTION 34 QUARTER S2
LATITUDE: N 31DEG 33MIN 30SEC LONGITUDE: W 110DEG 47MIN 28SEC
TOPO MAP NAME: MOUNT WRIGHTSON - 15 MIN

CURRENT STATUS: EXP PROSPECT

COMMODITY:
SILVER
GOLD

BIBLIOGRAPHY:
AZBM CARD FILE SANTA CRUZ CO.
SCHRADER, F.C., 1915, USGS BULL. 582,
P. 218-219
USGS PP 748, P 11-15
ADMMR ELLEN, DELLA & VANSUELLA FILE

ELLEN DELLA AND VANSUELLA PROSPECTS

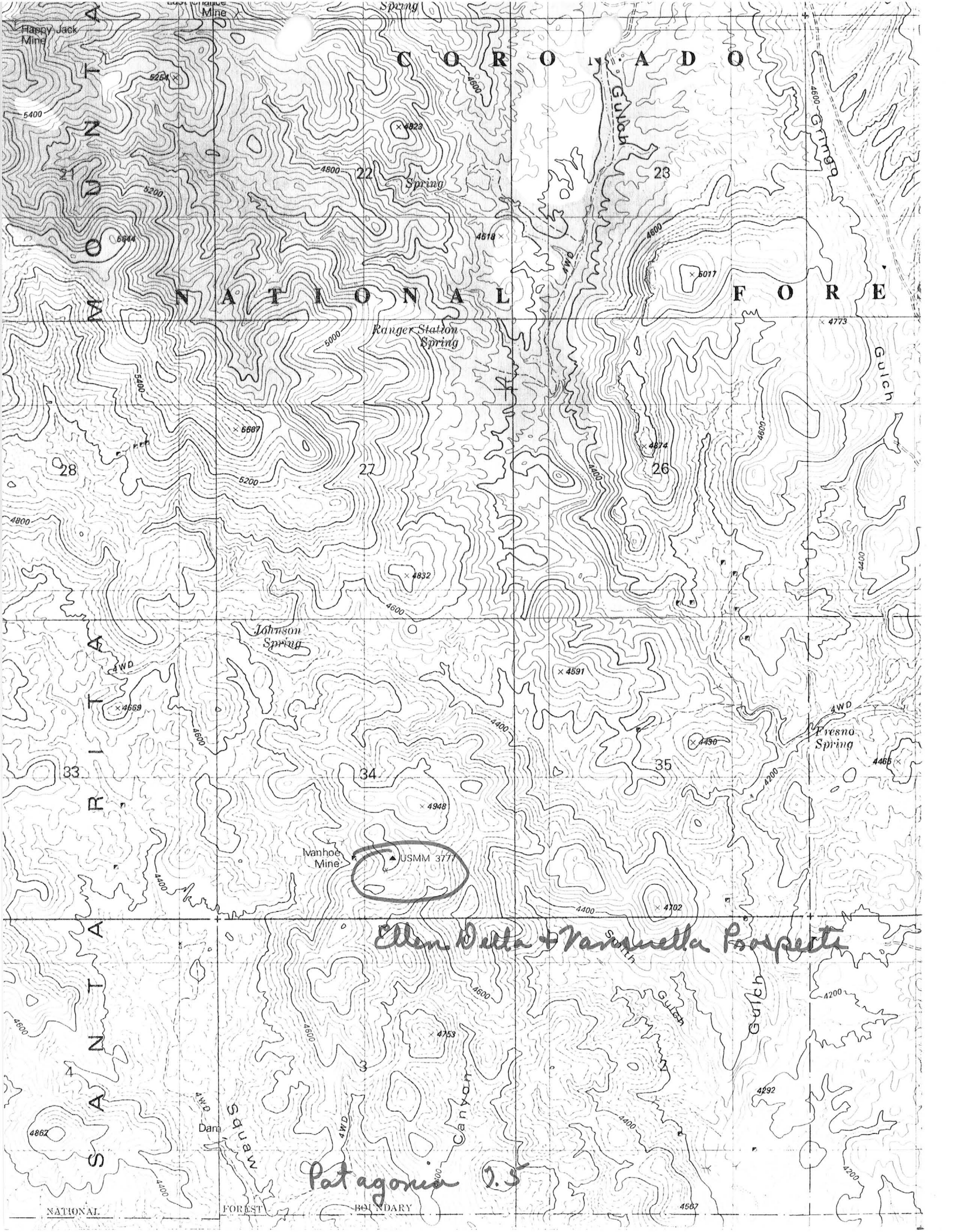
6/84

SANTA CRUZ COUNTY
Ivanhoe District
T21S R15E Sec 34 SE

MILS Santa Cruz Index # 114A

USGS Bu11. 582, P. 218-219

USGS PP 748, P. 11-15



C O R O N A D O

N A T I O N A L F O R E S T

S A N T A R I T A

Ellen Ditta + Vanquella Prospects

Patagonia 1.5

NATIONAL FOREST BOUNDARY

- REFERENCE 1 F1 < USBM FILE ELLEN DELLA AND VANSUELLA >
- REFERENCE 2 F2 < SCHRADER, F.C., 1915, USGS BULL. 582, p 218-19 >
- REFERENCE 3 F3 < DREWES, H., 1971, USGS MAP I-614 (1:48000) >
- REFERENCE 4 F4 < DREWES, H., 1972, USGS PROFESSIONAL PAPER 748, p. 11-15 >

Mile # 114A

K5 < VEIN ASSOCIATED WITH CONTACT OF YOUNGER DARK ANDESITE INTRUDED INTO OLDER ANDESITE (VANSUELLA DEPOSIT) >

N5 < GRANITE PORPHYRY - BOTH GRANITE AND ANDESITE IN REGION ARE SLICED BY NNW SHEETING WITH STEEP EASTERLY DIP >

N15 < WRIGHTSON FAULT BLOCKS >

N70 < CLAIM >

D10 < NO PRODUCTION DATA AVAILABLE >

U.S. CRIB-SITE FORM

RECORD IDENTIFICATION

RECORD NUMBER B10 < _____ > RECORD TYPE B20 < X, I, M > DEPOSIT NUMBER B40 < _____ >

REPORT DATE G1 < 8.2.05 > INFORMATION SOURCE B30 < L2 > FILE LINK IDENT. B50 < USBM-CD40230178 >

REPORTER(SUPERVISOR) G2 < CALDER, SUSAN R. > (last, first, middle initial)

REPORTER AFFILIATION G5 < ABGMT > SITE NAME A10 < ELLEN DELLA AND VANSUELLA PROSPECTS >

SYNONYMS A11 < _____ >

LOCATION

MINING DISTRICT/AREA A30 < IVANHOE DISTRICT >

COUNTY A60 < SANTA CRUZ > STATE A50 < AZ > COUNTRY A40 < U.S. >

PHYSIOGRAPHIC PROV. A63 < L2 >

DRAINAGE AREA A62 < 1.5050301 > LOWER COLORADO LAND STATUS A64 < 4.1 > (1979)

QUADRANGLE NAME A90 < MT. WRIGHTSON > (1958) QUADRANGLE SCALE A100 < 2500 >

SECOND QUAD NAME A92 < PATAGONIA > (1981) SECOND QUAD SCALE A91 < 2400 >

ELEVATION A107 < 4440 > FT.

UTM

NORTHING A120 < 3491500 >

EASTING A130 < 519120 >

ZONE NUMBER A110 < 12 >

ACCURACY

ACCURATE (ACC) (circle)

ESTIMATED EST < _____ >

GEODETIC

LATITUDE A70 < _____ N >

LONGITUDE A80 < _____ W >

CADASTRAL

TOWNSHIP(S) A77 < 021S > RANGE(S) A78 < 015E >

SECTION(S) A79 < 34 >

SECTION FRACTION(S) A76 < NE OF SW OF SE >

MERIDIAN(S) A81 < GILA AND SALT RIVER >

POSITION FROM NEAREST PROMINENT LOCALITY A82 < 3 MILES NW OF PATAGONIA >

LOCATION COMMENTS A83 < 1/2 MILE SE OF IVANHOE MINE, AT THE HEAD OF SMITH GULCH, ELLEN DELLA PROSPECT LOCATED 50 FT ABOVE GULCH >

* ESSENTIAL INFORMATION

* ESSENTIAL SOMETIMES OR HIGHLY RECOMMENDED

COMMODITY INFORMATION

COMMODITIES PRESENT C10 <CU, V, AG, MAU, P, B, ...>
 ORE MINERALS C30 <CERUSSITE, CHALCOPYRITE, ARGENTITE, CHALCOCITE, MALACHITE>
 COMMODITY SUBTYPES C41 <>
 GEN. ANALYTICAL DATA C43 <>
 COM. INFO. COMMENTS C50 <>

SIGNIFICANCE

	PRODUCER	NON-PRODUCER
MAJOR PRODUCTS	MAJOR <...>	MAIN COMMODITIES PRESENT C11 <AG, MAU, P, B, ...>
MINOR PRODUCTS	MINOR <...>	MINOR COMMODITIES PRESENT C12 <CU, ...>
POTENTIAL PRODUCTS	POTEN <...>	
OCCURRENCES	OCCUR <...>	OCCUR <...>

*PRODUCTION

PRODUCER	NON-PRODUCER
PRODUCTION YES (circle) <...>	PRODUCTION <UND> NO (circle one)
PRODUCTION SIZE <SML MED LGE (circle one)>	

EXPLORATION OR DEVELOPMENT

PRODUCER	NON-PRODUCER
STATUS AND ACTIVITY A20 <...>	STATUS AND ACTIVITY A20 <2>

DISCOVERER L20 <...>
 YEAR OF DISCOVERY L10 <...> NATURE OF DISCOVERY L30 <...> YEAR OF FIRST PRODUCTION L40 <...> YEAR OF LAST PRODUCTION L45 <...>
 PRESENT/LAST OWNER A12 <...>
 PRESENT/LAST OPERATOR A13 <...>
 EXPL./DEV.COMMENTS L110 <OWNED AS OF 1915 BY JAMES COCHRAN>

DESCRIPTION OF DEPOSIT

DEPOSIT TYPE(S) C40 <FISSURE VEIN>
 DEPOSIT FORM/SHAPE M10 <STRINGERS, POCKETS>
 DEPTH TO TOP M20 <...> UNITS M21 <...> MAXIMUM LENGTH M40 <...> UNITS M41 <...>
 DEPTH TO BOTTOM M30 <...> UNITS M31 <...> MAXIMUM WIDTH M50 <...> UNITS M51 <...>
 DEPOSIT SIZE M15 <SMALL> M15 <MEDIUM> M15 <LARGE> (circle one) MAXIMUM THICKNESS M60 <...> UNITS M61 <...>
 STRIKE M70 <N55E> DIP M80 <...>
 DIRECTION OF PLUNGE M100 <...> PLUNGE M90 <...>
 P.DISC.COMMENTS M110 <DEPOSITS LOCATED ON OLD REPUBLICAN VEIN; STRIKE MEASUREMENTS ARE FROM ELLEN DELLA PROSPECT>

DESCRIPTION OF WORKINGS

Workings are: SURFACE M120 UNDERGROUND M130 BOTH M140 (circle one) OVERALL LENGTH M190 <...> UNITS M191 <...>
 DEPTH BELOW SURFACE M160 <100> UNITS M161 <FT> OVERALL WIDTH M200 <...> UNITS M201 <...>
 LENGTH OF WORKINGS M170 <100> UNITS M171 <FT> OVERALL AREA M210 <...> UNITS M211 <...>
 DESC. OF WORK. COM. M220 <VANSUELLA PROSPECT IS OPENED BY SEVERAL SHORT TUNNELS AND A 40-FT SHAFT; ELLEN DELLA PROSPECT OPENED BY A 100-FT SHAFT>

GEOLOGY

*AGE OF HOST ROCK(S) K1 <TUR, 145 MY. BY K-AR DATING METHOD (DREWES, H., 1971)>
 *HOST ROCK TYPE(S) K1A <COARSE-GRAINED GRANITE PORPHYRY>
 *AGE OF IGNEOUS ROCK(S) K2 <ECRET, ...>
 *IGNEOUS ROCK TYPE(S) K2A <ANDESITE AND ANDESITIC BRECCIA; VOLCANIC AND SEDIMENTARY ROCKS>
 *AGE OF MINERALIZATION K3 <LCRET-TERT, ...>
 *PERT. MINERALS (NOT ORE) K4 <SILICIC GANGUE, IRON AND MANGANESE OXIDES; ALUNITE>
 *ORE CONTROL/LOCUS K5 <NE-TRENDING QUARTZ FISSURE VEIN IN GRANITE (ELLEN DELLA DEPOSIT); E-W AND NE-TRENDING QUARTZ FISSURE VEINS CUTTING DIORITE AND ...>
 *MAJ. REG. TRENDS/STRUCT. N5 <NW-TRENDING SANTA RITA FAULT ZONE SEPARATING SALERO AND MOUNT ...>
 *TECTONIC SETTING N15 <...>
 *SIGNIFICANT LOCAL STRUCT. N70 <VEIN ALSO CUTS AREA OF UPFAULTED GREENISH DIORITE ON VANSUELLA ...>
 *SIGNIFICANT ALTERATION N75 <SERICITIZED, KAOLINIZED, SILICIFIED GRANITE; VEINS ARE SILICIFIED>
 *PROCESS OF CONC./ENRICH. N80 <SUPERGENE ENRICHMENT AND OXIDATION OF SULFIDES>
 *FORMATION AGE N30 <...>
 *FORMATION NAME N30A <...>
 *SECOND FM AGE N35 <...>
 *SECOND FM NAME N35A <...>
 *IGNEOUS UNIT AGE N50 <TUR, ...>
 *IGNEOUS UNIT NAME N50A <SQUAW GULCH GRANITE>
 *SECOND IG. UNIT AGE N55 <ECRET, ...>
 *SECOND IG. UNIT NAME N55A <TEMPORAL FORMATION - LOWER MEMBER>
 GEOLOGY COMMENTS N85 <ORE IS SIMILAR TO THAT FOUND IN THE COMMERCIAL TUNNEL OF THE VANHOE MINE>

GENERAL COMMENTS

GENERAL COMMENTS GEN <...>