



CONTACT INFORMATION

Mining Records Curator
Arizona Geological Survey
1520 West Adams St.
Phoenix, AZ 85007
602-771-1601
<http://www.azgs.az.gov>
inquiries@azgs.az.gov

The following file is part of the

Arizona Department of Mines and Mineral Resources Mining Collection

ACCESS STATEMENT

These digitized collections are accessible for purposes of education and research. We have indicated what we know about copyright and rights of privacy, publicity, or trademark. Due to the nature of archival collections, we are not always able to identify this information. We are eager to hear from any rights owners, so that we may obtain accurate information. Upon request, we will remove material from public view while we address a rights issue.

CONSTRAINTS STATEMENT

The Arizona Geological Survey does not claim to control all rights for all materials in its collection. These rights include, but are not limited to: copyright, privacy rights, and cultural protection rights. The User hereby assumes all responsibility for obtaining any rights to use the material in excess of "fair use."

The Survey makes no intellectual property claims to the products created by individual authors in the manuscript collections, except when the author deeded those rights to the Survey or when those authors were employed by the State of Arizona and created intellectual products as a function of their official duties. The Survey does maintain property rights to the physical and digital representations of the works.

QUALITY STATEMENT

The Arizona Geological Survey is not responsible for the accuracy of the records, information, or opinions that may be contained in the files. The Survey collects, catalogs, and archives data on mineral properties regardless of its views of the veracity or accuracy of those data.

PRINTED: 07-25-2012

ARIZONA DEPARTMENT OF MINES AND MINERAL RESOURCES AZMILS DATA

PRIMARY NAME: EDNA GROUP

ALTERNATE NAMES:

MARTHA WASHINGTON

SANTA CRUZ COUNTY MILS NUMBER: 107

LOCATION: TOWNSHIP 24 S RANGE 15 E SECTION 12 QUARTER NE
LATITUDE: N 31DEG 21MIN 27SEC LONGITUDE: W 110DEG 45MIN 45SEC
TOPO MAP NAME: NOGALES - 15 MIN

CURRENT STATUS: EXP PROSPECT

COMMODITY:

TUNGSTEN

COPPER

BIBLIOGRAPHY:

KEITH, S.B., 1975 AZBM INDEX OF MINING PROP.
IN SANTA CRUZ CO., BULL. 191
AZBM CARD FILE SANTA CRUZ CO.
DALE, ET.AL., 1960 TUNGSTEN DEPOSITS OF
COCHISE, PIMA AND SANTA CRUZ CO'S.,
USBM RI 5650
ADMMR EDNA GROUP FILE

EDNA MINE & TUNGSTEN MILL

SANTA CRUZ COUNTY
PALMETTO DISTRICT
T24S R15E Sec. 12

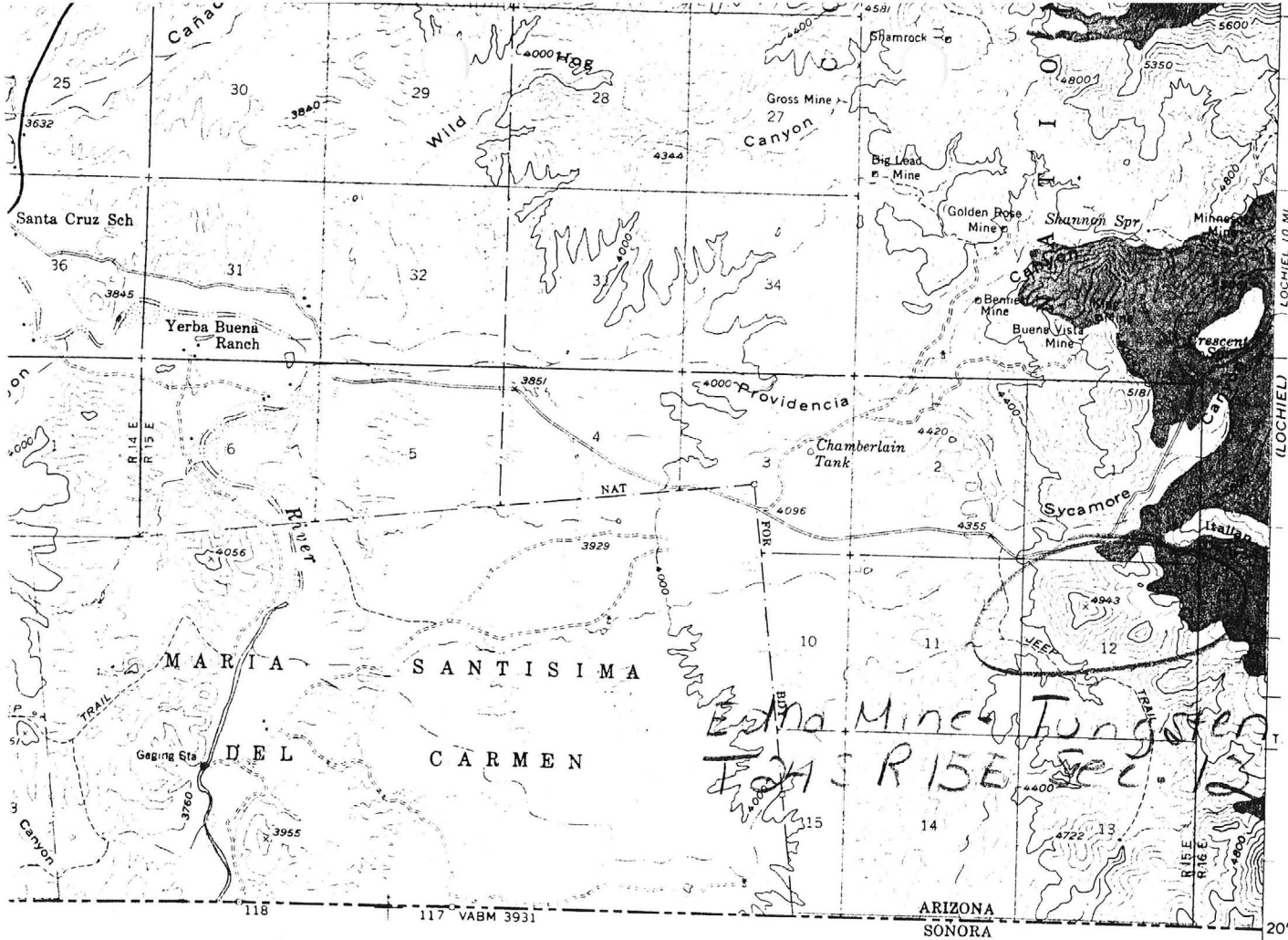
Santa Cruz County MILS Indes #107

AKA: Martha Washington

See: RI 5650

See: ABM Bull. 191

Nogales 7' Quad (included in file)



NOGALES 7'

3458000m N.



EDNA MINE

COCHISE

Went to the Randall Tungsten Mill. It has not been moved from its location in Nogales and no one was around and no sign of any activity. Also went to the Edna Tungsten Mine belonging to Mr. Randall. Both are supposed to have been leased, but there was no sign of any past activity. GVI WR 9/24/73

EDNA MINE

COCHISE COUNTY

The reported tungsten production is from W. F. Randall, 47 Western Ave., 287-3272 or Box 1212, Nogales, Arizona. It is from the Edna Mine. I have not been able to talk to him. He is supposed to have a little mill on the west side of I-19, have tried to find same, but due to highway construction have not been able to find same.

He had a couple of men working part time south of the road in lower Sycamore Canyon along the border - S13 24S 19E. I am not sure but think that this is referred to as the Edna mine. He has no objection to publication of the statistics. You might put the above information in your file and mark it unsubstantiated.

GWJ Memo 1-14-70

W. F. Randall of Nogales is reported to have shipped a ton of WO_3 concentrates from his Edna mine in lower Sycamore Canyon in 1969. He has a little mill near the Highway Patrol Station at Nogales. GWJ QR 2-27-70

Mine visit - Edna Tungsten mine. GWJ WR 5-24-71

Mine visit. Edna Tungsten mine. S12, 24S 19E talked to Juan Heridia lessor. GWJ WR 5/21/72

The Edna Mine S12 24S 15E a small tungsten mine with the tungsten minerals appearing to occur in greisen zones in the granite. The compressor and loader were on the property. It appeared that some mining had taken place within the past week. The mill in Nogales has not been moved and no one was working there the day of the visit. GWJ WR 9/25/72

Visited the Edna Mine of Mr. Randall's, S12 T24S R19E. Someone had been working recently. The back hoe and loader were there along with the compressor. The loader tracks didn't appear to be only a few days old. GWJ Note 9/26/72

Mine visit. Randall tungsten mill at Nogales. Appears to have been working recently but no one around. Visit to Edna tungsten (Randall) mine. Unable to get up the last mile due to snow. Looking at the mine operating area from a vantage point through field glasses, saw no sign of recent work. The compressor was there but the loader was not. GWJ WR 1/22/73

Frank Randall of Nogales has leased the mine and mill to Richard Ralinowski of 1120 Grand Avenue, Nogales. (Operates the Hacienda Rest). At time of visit was running mill in North Nogales, cleaning up the stockpiled tungsten ore. Is planning on doing some mining and will move the mill closer to the mine, probably near the Patagonia Road NE of Nogales. GWJ FT 3/6/73

Mine visit to Randall tungsten mill, Nogales. Leased to Richard Kalinowski, 1120 Grand Avenue, Nogales. He was cleaning up stockpile; hopes to move mill to NE of Nogales. GWJ WR 3/6

ELDA GROUP (same as Edna)

SANTA CRUZ COUNTY

Mine visit to Frank Randall's tungsten mill near Nogales. GWI WR 7/1/71

Mill visit. Randall Tungsten Mill off I-19 Nogales. S31-T23S R14E. GWI WR 3/7/72

Randall tungsten mill Nogales (No one around, gate locked). GWI WR 5/2/72

Mr. Frank Randall of Nogales has a couple of leasers working at his Elda mine. He is in the process of removing his tungsten mill from its present location to another (announced location) in the area. GWI 4 1/4 '72

ARIZONA DEPARTMENT OF MINES & REOURCES
Mineral Building, Fairgrounds
Phoenix, Arizona

1. Information from: FRANK RANDALL
Address: 47 WESTERN AVE NOGALES AZ
2. Mine: ELDA (GROUP) 3. No. of Claims - Patented _____
(same as Edna) Unpatented 10
4. Location: _____
5. Sec 12-13 Tp 24S Range 15E 6. Mining District PALMETTO Santa Cruz
7. Owner: FRANK RANDALL
8. Address: ABOVE
9. Operating Co.: SAME
10. Address: _____
11. President: _____ 12. Gen. Mgr.: _____
13. Principal Metals: WO₃ as scheelite 14. No. Employed: 5
15. Mill, Type & Capacity: 2 Tons Concentrate 67% per month. 1 shift
16. Present Operations: (a) Down ☐ (b) Assessment work ☐ (c) Exploration ☐
(d) Production ☐ (e) Rate _____ tpd.
17. New Work Planned: _____

18. Misc. Notes: ORE RUNS 1/2 To 3/4 % WO₃ - Union Carbide purchases all
concentrate no penalty for impurities
Mill located in Patero Creek near 1-19 alongside 1-19

Date: 1-7-71

GW
(Signature)

(Field Engineer)