



CONTACT INFORMATION

Mining Records Curator
Arizona Geological Survey
1520 West Adams St.
Phoenix, AZ 85007
602-771-1601
<http://www.azgs.az.gov>
inquiries@azgs.az.gov

The following file is part of the

Arizona Department of Mines and Mineral Resources Mining Collection

ACCESS STATEMENT

These digitized collections are accessible for purposes of education and research. We have indicated what we know about copyright and rights of privacy, publicity, or trademark. Due to the nature of archival collections, we are not always able to identify this information. We are eager to hear from any rights owners, so that we may obtain accurate information. Upon request, we will remove material from public view while we address a rights issue.

CONSTRAINTS STATEMENT

The Arizona Geological Survey does not claim to control all rights for all materials in its collection. These rights include, but are not limited to: copyright, privacy rights, and cultural protection rights. The User hereby assumes all responsibility for obtaining any rights to use the material in excess of "fair use."

The Survey makes no intellectual property claims to the products created by individual authors in the manuscript collections, except when the author deeded those rights to the Survey or when those authors were employed by the State of Arizona and created intellectual products as a function of their official duties. The Survey does maintain property rights to the physical and digital representations of the works.

QUALITY STATEMENT

The Arizona Geological Survey is not responsible for the accuracy of the records, information, or opinions that may be contained in the files. The Survey collects, catalogs, and archives data on mineral properties regardless of its views of the veracity or accuracy of those data.

02/03/86

ARIZONA DEPARTMENT OF MINES AND MINERAL RESOURCES FILE DATA

PRIMARY NAME: ECHO MOUNTAIN SCHIST QUARRY

ALTERNATE NAMES:

ECHO MOUNTAIN GREEN
ECHO MOUNTAIN PINK
MAYER SCHIST QUARRY

YAVAPAI COUNTY MILS NUMBER: 1015D

LOCATION: TOWNSHIP 12 N RANGE 2 E SECTION 18 QTR. NW
LATITUDE:N 34DEG 25MIN 42SEC LONGITUDE:W 112DEG 11MIN 50SEC
TOPO MAP NAME: MAYER - 7.5 MIN

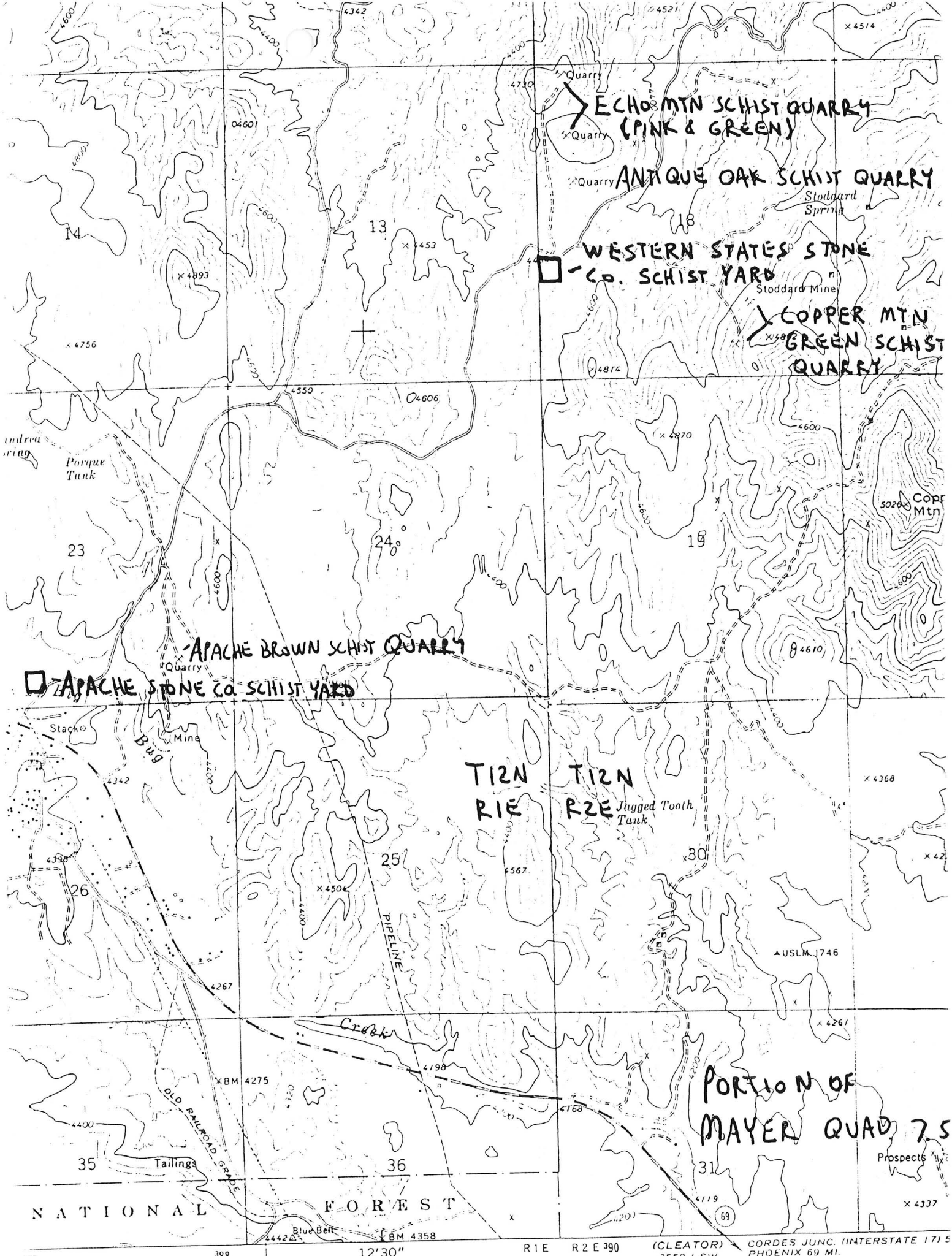
CURRENT STATUS: PRODUCER

COMMODITY:

CUT STONE AND STONE PRODUCTS
STONE DIMENSION SCHIST

BIBLIOGRAPHY:

USGS MAYER QUAD
ADMMR ECHO MOUNTAIN SCHIST QUARRY FILE
OPERATED BY WESTERN STATES STONE CO.



87 388 12'30" R1E R2E 390 (CLEATOR) 3552 I SW CORDES JUNC. (INTERSTATE 17) 5 PHOENIX 69 MI.

MINE VISIT

MINE: Mayer Onyx Property (f) and Mayer Schist Quarries (f)

DATE: July 14, 1984

ENGINEER: Nyal J. Niemuth, Mineral Resource Specialist

Apache Stone, 4637 E. Washington, Phoenix, AZ 85034, ph 267-8658, a division of Halquist Stone Co. Inc. operates an equipment and stone storage yard in T12N, R1E Sec 23 C. Though an active summer operation, this being saturday, their operations were idle.

At the yard is an inventory of approximately 600 skids or palets loaded with Schist (500) and Onyx (100) building and decorative stones. Typical stone dimensions would be 15" x 30" and 4-7" thick. Equipment on site at the yard and quarries included: an air track drill, compressor, 2 catapillar type vehicles, a loader, 2 fork lift trucks, some semi-truck flat bed trailers, and 2 trailers (possibly used as office and change room).

The onyx is being processed from a quarry located at T12N, R1E Sec 22 (Mayer Onyx Property file) as shown on the attached map.

Arizona Department of Mines and Mineral Resources


VERBAL INFORMATION SUMMARY 672

May be Reproduced

1. Information from: C. E. "Whitey" Webster, President, Western States Stone
Address: 2820 Grand Avenue, Phoenix, Arizona 85017 Phone - 253-2018
2. Mine: Echo Mtn Schist Quarry 3. ADMMR Mine File (new) Echo Mtn Schist Quarry
4. County: Yavapai 5. District _____
6. Township 12N Range 2E Sec(s) 18 NW
7. Location: 2½ miles North of Mayer
8. No. of Claims - Patented _____ Unpatented X
9. Owner (if different from above) _____
10. Address: _____
11. Operating Company: Western States Stone
12. Pertinent People and/or Firm: C.E. "Whitey" Webster
13. Commodities: Stone - dimension - mica schist
14. Operational Status: Producer
15. Summary of information received, comments, etc.: _____
16. Yavapai County MLLS #1015D (Formerly Mayer Schist Quarry - file)

Western State Stone Company markets two varieties from these two quarries.
One is known as Echo Mtn Pink, the other is Echo Mtn Green. The material
is sized and put in wire baskets on pallets or stacked and strapped onto
skids for shipment at the company's schist stone quarry yard in the SW
of Sec 18, T12N R2E.

Date: 9/5/85


(Signature)

ADMMR