



CONTACT INFORMATION

Mining Records Curator
Arizona Geological Survey
1520 West Adams St.
Phoenix, AZ 85007
602-771-1601
<http://www.azgs.az.gov>
inquiries@azgs.az.gov

The following file is part of the

Arizona Department of Mines and Mineral Resources Mining Collection

ACCESS STATEMENT

These digitized collections are accessible for purposes of education and research. We have indicated what we know about copyright and rights of privacy, publicity, or trademark. Due to the nature of archival collections, we are not always able to identify this information. We are eager to hear from any rights owners, so that we may obtain accurate information. Upon request, we will remove material from public view while we address a rights issue.

CONSTRAINTS STATEMENT

The Arizona Geological Survey does not claim to control all rights for all materials in its collection. These rights include, but are not limited to: copyright, privacy rights, and cultural protection rights. The User hereby assumes all responsibility for obtaining any rights to use the material in excess of "fair use."

The Survey makes no intellectual property claims to the products created by individual authors in the manuscript collections, except when the author deeded those rights to the Survey or when those authors were employed by the State of Arizona and created intellectual products as a function of their official duties. The Survey does maintain property rights to the physical and digital representations of the works.

QUALITY STATEMENT

The Arizona Geological Survey is not responsible for the accuracy of the records, information, or opinions that may be contained in the files. The Survey collects, catalogs, and archives data on mineral properties regardless of its views of the veracity or accuracy of those data.

12/15/88

ARIZONA DEPARTMENT OF MINES AND MINERAL RESOURCES FILE DATA

PRIMARY NAME: DUTCH BOY

ALTERNATE NAMES:

COCHISE COUNTY MILS NUMBER: 846

LOCATION: TOWNSHIP 15 S RANGE 28 E SECTION 4 QUARTER SW
LATITUDE: N 32DEG 09MIN 25SEC LONGITUDE: W 109DEG 29MIN 50SEC
TOPO MAP NAME: BOWIE MTN NORTH - 6.5 MIN

CURRENT STATUS: RAW PROSPECT

COMMODITY:
GOLD LODE

BIBLIOGRAPHY:
ADMMR DUTCH BOY FILE

4048 II NE
(DOS CABEZAS)

361

360

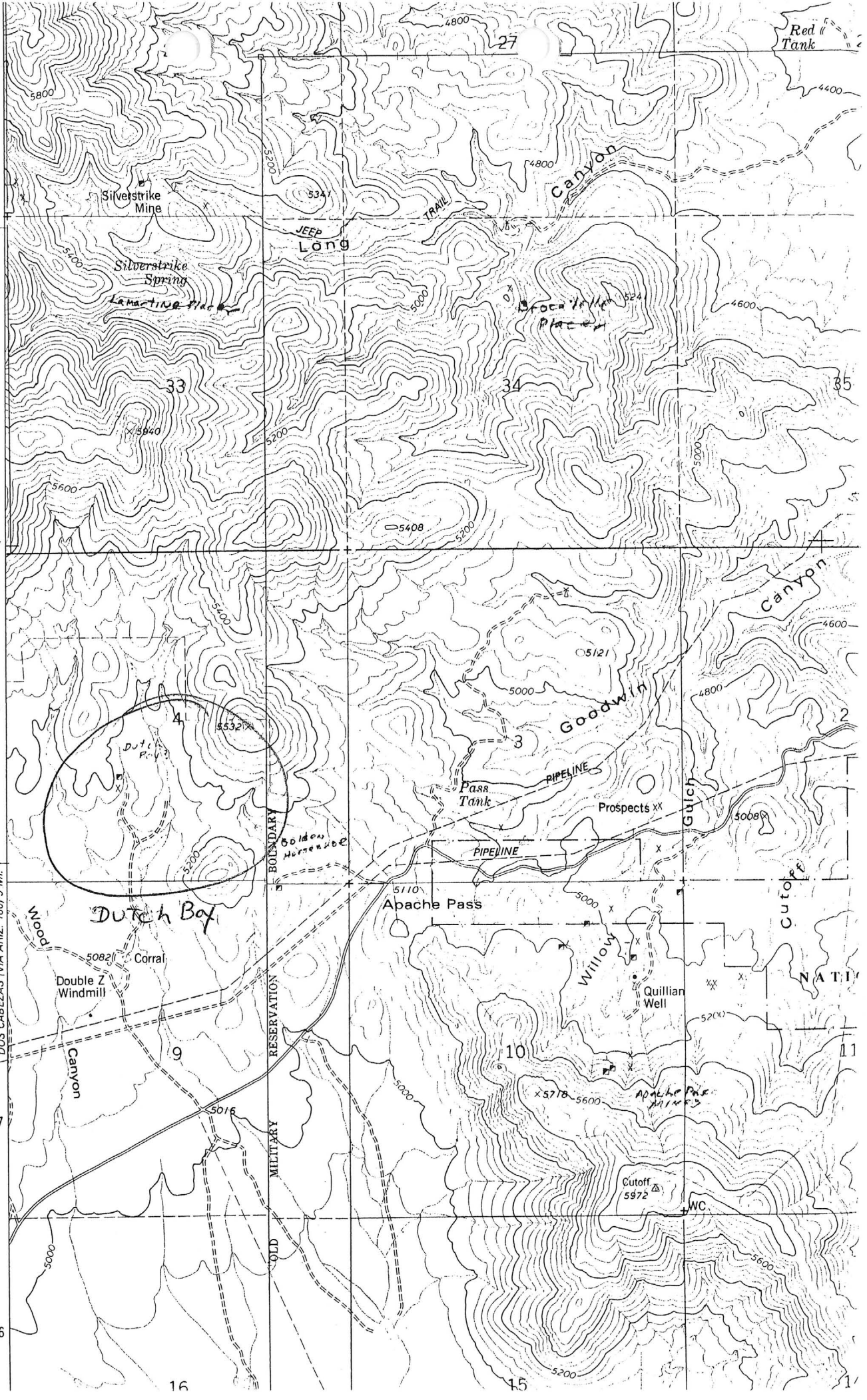
T 14 S
10'

359

DOS CABEZAS (VIA ARIZ. 186) 9 MI.

357

356



Red Tank

27

Silverstrike Mine

Silverstrike Spring
Landing Place

JEEP Long TRAIL

Canyon

33

34

35

5408

Canyon

Goodwin

Dutch Bay

Apache Pass

PIPELINE

Pass Tank

PIPELINE

Prospects

Guich

Wood Canyon

Double Z Windmill

Corral

Golden Hurricane

Willow

Quillian Well

NATI

9

10

11

Apache Pass

Cutoff 5972

WC

16

15

11