



## **CONTACT INFORMATION**

Mining Records Curator  
Arizona Geological Survey  
1520 West Adams St.  
Phoenix, AZ 85007  
602-771-1601  
<http://www.azgs.az.gov>  
[inquiries@azgs.az.gov](mailto:inquiries@azgs.az.gov)

The following file is part of the

Arizona Department of Mines and Mineral Resources Mining Collection

## **ACCESS STATEMENT**

These digitized collections are accessible for purposes of education and research. We have indicated what we know about copyright and rights of privacy, publicity, or trademark. Due to the nature of archival collections, we are not always able to identify this information. We are eager to hear from any rights owners, so that we may obtain accurate information. Upon request, we will remove material from public view while we address a rights issue.

## **CONSTRAINTS STATEMENT**

The Arizona Geological Survey does not claim to control all rights for all materials in its collection. These rights include, but are not limited to: copyright, privacy rights, and cultural protection rights. The User hereby assumes all responsibility for obtaining any rights to use the material in excess of "fair use."

The Survey makes no intellectual property claims to the products created by individual authors in the manuscript collections, except when the author deeded those rights to the Survey or when those authors were employed by the State of Arizona and created intellectual products as a function of their official duties. The Survey does maintain property rights to the physical and digital representations of the works.

## **QUALITY STATEMENT**

The Arizona Geological Survey is not responsible for the accuracy of the records, information, or opinions that may be contained in the files. The Survey collects, catalogs, and archives data on mineral properties regardless of its views of the veracity or accuracy of those data.

10/02/85

ARIZONA DEPARTMENT OF MINES AND MINERAL RESOURCES FILE DATA

PRIMARY NAME: DRIPPING SPRINGS VALLEY CHABAZITE

ALTERNATE NAMES:

GILA COUNTY MILS NUMBER: 561

LOCATION: TOWNSHIP 3 S RANGE 15 E SECTION 35 QTR.

LATITUDE: LONGITUDE:

TOPO MAP NAME: EL CAPITAN MTN. 7.5 MIN

CURRENT STATUS:

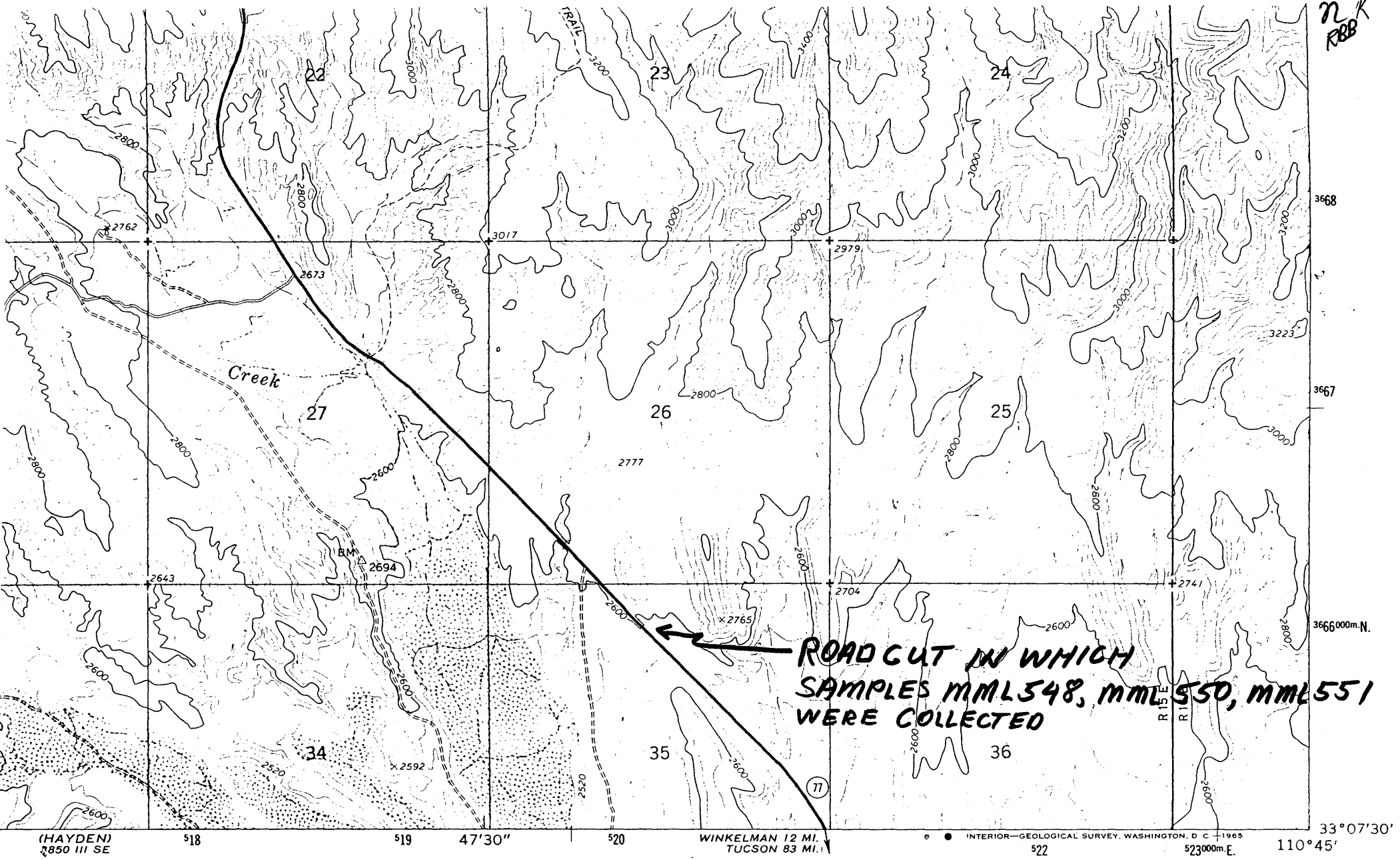
COMMODITY:

ZEOLITES

BIBLIOGRAPHY:

ADMMR DRIPPING SPRINGS VALLEY CHAZAZITE FILE

ADMMR ZEOLITE, MINRAL REPORT NO. 1, P. 28



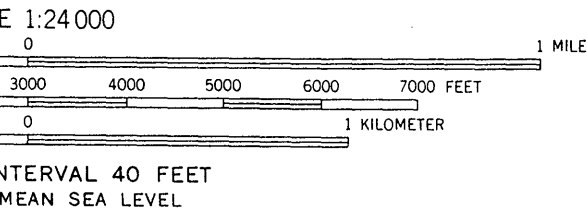
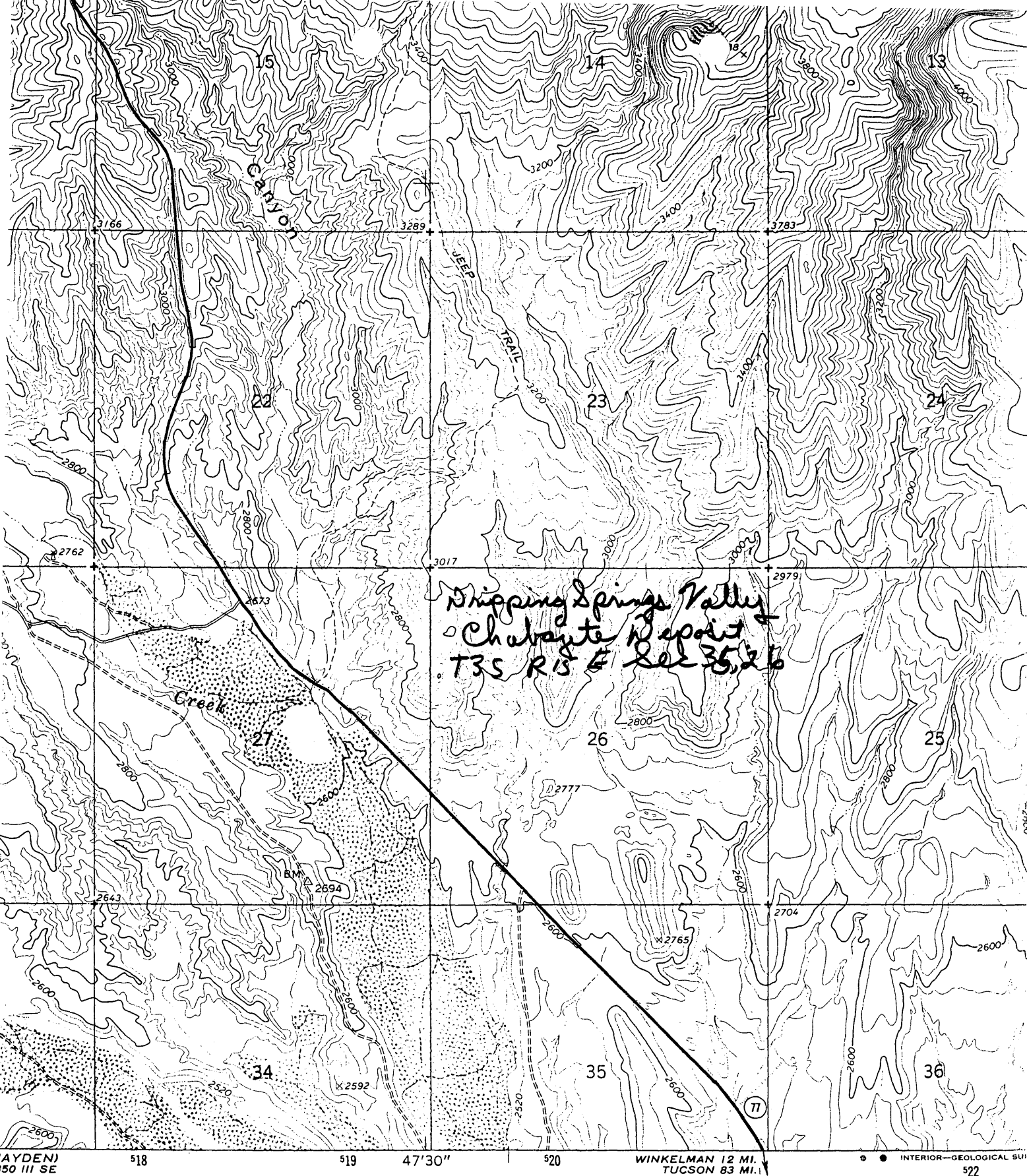
**DRIPPING SPRINGS VALLEY  
CHABAZITE DEPOSIT (file)  
T3S. R15E**

**ROAD CUT IN WHICH  
SAMPLES MML548, MML550, MML551  
WERE COLLECTED**

(HAYDEN)  
8850 III SE  
SCALE 1:24000  
0 1000 2000 3000 4000 5000 6000 7000 FEET  
0 1 KILOMETER  
FOUR INTERVAL 40 FEET  
UM IS MEAN SEA LEVEL



ROAD CLASSIFICATION  
Heavy-duty ————— Light-duty —————  
Unimproved dirt =====  
○ State Route



El Capitan Mtn, 7.5



ROAD CL

Heavy-duty



EL CA

NE

DRIPPING SPRINGS VALLEY CHABAZITE DEPOSIT

GILA COUNTY

KAP WR 4/12/85: Attended the Symposium on the Geology of Industrial Minerals in Tucson. The program included talks on a number of Arizona properties and field trips to the Dripping Springs Valley Chabazite Deposit (file) Gila County in Secs 26 and 35, T3S R15E.

---