



CONTACT INFORMATION

Mining Records Curator
Arizona Geological Survey
1520 West Adams St.
Phoenix, AZ 85007
602-771-1601
<http://www.azgs.az.gov>
inquiries@azgs.az.gov

The following file is part of the

Arizona Department of Mines and Mineral Resources Mining Collection

ACCESS STATEMENT

These digitized collections are accessible for purposes of education and research. We have indicated what we know about copyright and rights of privacy, publicity, or trademark. Due to the nature of archival collections, we are not always able to identify this information. We are eager to hear from any rights owners, so that we may obtain accurate information. Upon request, we will remove material from public view while we address a rights issue.

CONSTRAINTS STATEMENT

The Arizona Geological Survey does not claim to control all rights for all materials in its collection. These rights include, but are not limited to: copyright, privacy rights, and cultural protection rights. The User hereby assumes all responsibility for obtaining any rights to use the material in excess of "fair use."

The Survey makes no intellectual property claims to the products created by individual authors in the manuscript collections, except when the author deeded those rights to the Survey or when those authors were employed by the State of Arizona and created intellectual products as a function of their official duties. The Survey does maintain property rights to the physical and digital representations of the works.

QUALITY STATEMENT

The Arizona Geological Survey is not responsible for the accuracy of the records, information, or opinions that may be contained in the files. The Survey collects, catalogs, and archives data on mineral properties regardless of its views of the veracity or accuracy of those data.

03/02/90

ARIZONA DEPARTMENT OF MINES AND MINERAL RESOURCES FILE DATA

PRIMARY NAME: DON LUIS PIT

ALTERNATE NAMES:

COCHISE COUNTY MILS NUMBER: 561

LOCATION: TOWNSHIP 23 S RANGE 24 E SECTION 17 QUARTER W2
LATITUDE: N 31DEG 25MIN 32SEC LONGITUDE: W 109DEG 55MIN 18SEC
TOPO MAP NAME: BISBEE - 7.5 MIN

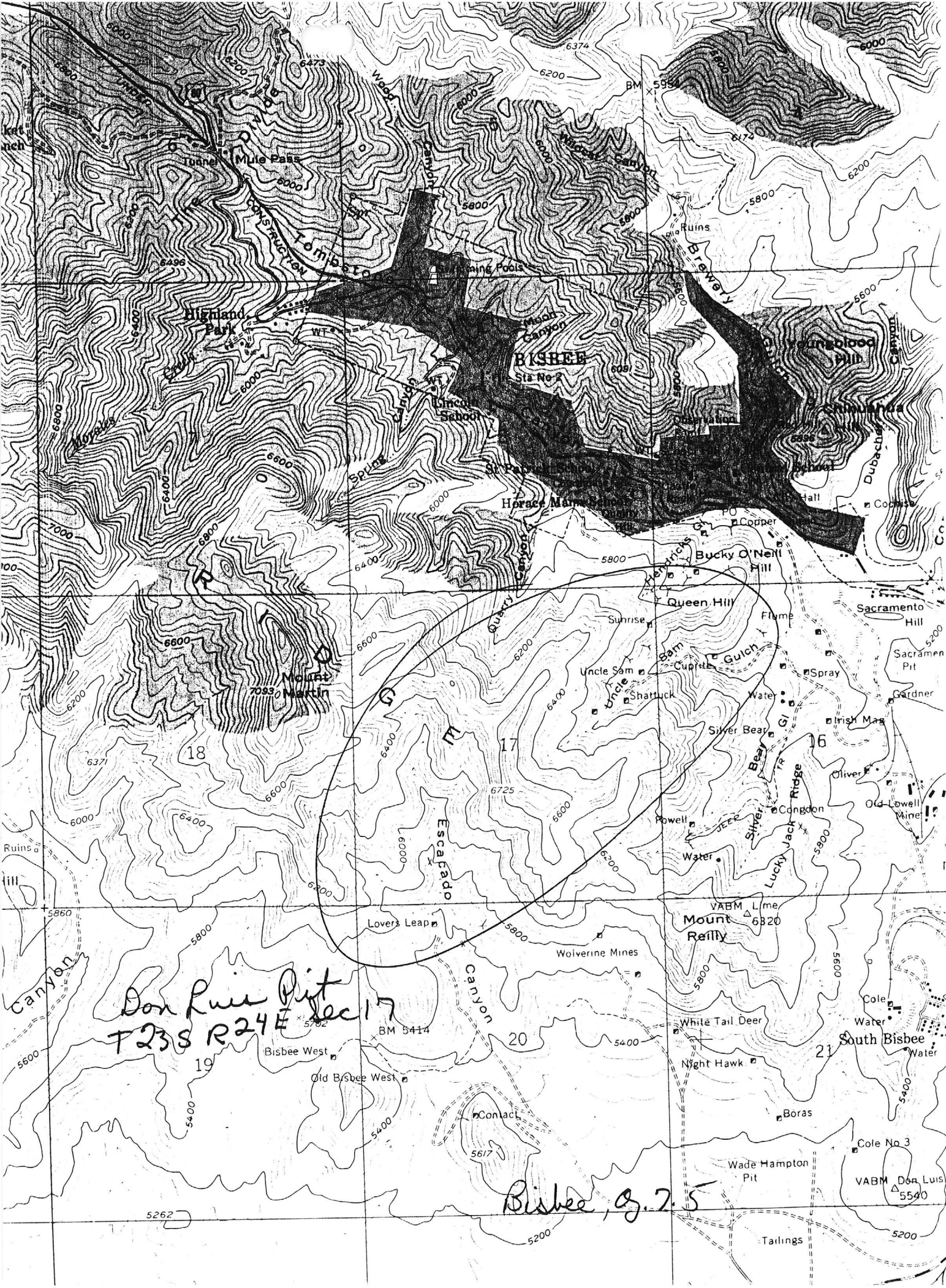
CURRENT STATUS: PRODUCER

COMMODITY:

SILICON SANDSTONE
STONE SANDSTONE

BIBLIOGRAPHY:

US MSHS 1978 METAL-NONMETAL MINE FILE REF.
US MSHS 1978 METAL-NONMETAL MINE INFO. SUPP.
ADMMR DON LUIS PIT FILE



ABSTRACTED FROM ADMMR 1986
DIRECTORY OF ACTIVE MINES
April 24, 1987

A.J. GILBERT CONSTRUCTION COMPANY

Don Luis Quarry

P.O. Box 5288, Bisbee 85603 - Phone 432-2238 - Located 1 mile north of Don
Luis - Silica flux.

Plant Manager Manuel Rivera

Sena

Office of State Mine Inspector

705 West Wing, Capitol Building
Phoenix, Arizona 85007
602-255-5971

STATE MINE INSPECTOR

AUG 5 1985

NOTICE TO ARIZONA STATE MINE INSPECTOR

In compliance with Arizona Revised Statute Section 27-303*, we are submitting this written notice to the Arizona State Mine Inspector (705 West Wing, Capitol Building, Phoenix, Arizona 85007) of our intent to start stop (please circle one) a mining operation.

COMPANY NAME A. J. Gilbert Construction Company

CHIEF OFFICER A. J. Gilbert, Jr.

COMPANY ADDRESS 6741 N. Thornydale, Suite 121, Tucson, AZ 85741

COMPANY TELEPHONE NUMBER 742-2976

MINE OR PLANT NAME Don Luis Pit (P)

MINE OR PLANT LOCATION (including county and nearest town, as well as directions for locating by vehicle)

2 miles north of Don Luis area off of Highway 92

Bisbee, Cochise County, Arizona

TYPE OF OPERATION Crushing PRINCIPAL PRODUCT Silica

STARTING DATE 7-15-85 CLOSING DATE 9-30-85

DURATION OF OPERATION 2 months

PERSON SENDING THIS NOTICE A. J. Gilbert, III

TITLE OF PERSON SENDING THIS NOTICE Vice President

DATE NOTICE SENT TO STATE MINE INSPECTOR 7-31-85

*A.R.S. Section 27-303 NOTIFICATION TO INSPECTOR OF BEGINNING OR SUSPENDING OPERATIONS: When mining operations are commenced in any mine or when operations therein are permanently suspended, the operator shall give written notice to the inspector in this office prior to commencement or suspension of operations.

RECEIVED

SEP 16 1985

DEPT. OF ~~MINE~~ &
MINERAL RESOURCES

Send



DON LUIS PIT (NEW F.)
(MILES CARO)

COCKE MILES # 561

STATE MINE INSPECTOR

Office of State Mine Inspector

705 West Wing, Capitol Building
Phoenix, Arizona 85007
602-255-5971

T235, R2-4E Sec 17

MAR 07 1985

NOTICE TO ARIZONA STATE MINE INSPECTOR

In compliance with Arizona Revised Statute Section 27-303*, we are submitting this written notice to the Arizona State Mine Inspector (705 West Wing, Capitol Building, Phoenix, Arizona 85007) of our intent to start stop (please circle one) a mining operation.

COMPANY NAME A. J. Gilbert Construction Co.

CHIEF OFFICER A. J. Gilbert, Jr.

COMPANY ADDRESS 6741 N. Thornydale, Suite 121, Tucson, AZ 85741

COMPANY TELEPHONE NUMBER 742-2976

MINE OR PLANT NAME Don Luis Pit

MINE OR PLANT LOCATION (including county and nearest town, as well as directions for locating by vehicle)

2 miles north of Don Luis area off of Highway 92.

TYPE OF OPERATION Crushing PRINCIPAL PRODUCT Silica

STARTING DATE February 24, 1985 CLOSING DATE March 30

DURATION OF OPERATION approx. 1 month

PERSON SENDING THIS NOTICE A. J. Gilbert, III

TITLE OF PERSON SENDING THIS NOTICE Vice President

DATE NOTICE SENT TO STATE MINE INSPECTOR March 6, 1985

*A.R.S. Section 27-303 NOTIFICATION TO INSPECTOR OF BEGINNING OR SUSPENDING OPERATIONS: When mining operations are commenced in any mine or when operations therein are permanently suspended, the operator shall give written notice to the inspector at his office prior to commencement or suspension of operations.