



CONTACT INFORMATION

Mining Records Curator
Arizona Geological Survey
1520 West Adams St.
Phoenix, AZ 85007
602-771-1601
<http://www.azgs.az.gov>
inquiries@azgs.az.gov

The following file is part of the

Arizona Department of Mines and Mineral Resources Mining Collection

ACCESS STATEMENT

These digitized collections are accessible for purposes of education and research. We have indicated what we know about copyright and rights of privacy, publicity, or trademark. Due to the nature of archival collections, we are not always able to identify this information. We are eager to hear from any rights owners, so that we may obtain accurate information. Upon request, we will remove material from public view while we address a rights issue.

CONSTRAINTS STATEMENT

The Arizona Geological Survey does not claim to control all rights for all materials in its collection. These rights include, but are not limited to: copyright, privacy rights, and cultural protection rights. The User hereby assumes all responsibility for obtaining any rights to use the material in excess of "fair use."

The Survey makes no intellectual property claims to the products created by individual authors in the manuscript collections, except when the author deeded those rights to the Survey or when those authors were employed by the State of Arizona and created intellectual products as a function of their official duties. The Survey does maintain property rights to the physical and digital representations of the works.

QUALITY STATEMENT

The Arizona Geological Survey is not responsible for the accuracy of the records, information, or opinions that may be contained in the files. The Survey collects, catalogs, and archives data on mineral properties regardless of its views of the veracity or accuracy of those data.

11/19/85

ARIZONA DEPARTMENT OF MINES AND MINERAL RESOURCES FILE DATA

PRIMARY NAME: DOME BASIN

ALTERNATE NAMES:

BOYER MINE

LA PAZ COUNTY MILS NUMBER: 800

LOCATION: TOWNSHIP 5 N RANGE 20 W SECTION 28 QTR. NW
LATITUDE:N 33DEG 45MIN LONGITUDE:W 114DEG 20MIN
TOPO MAP NAME: MIDDLE CAMP MTN 7.5

CURRENT STATUS: UNKNONW

COMMODITY:

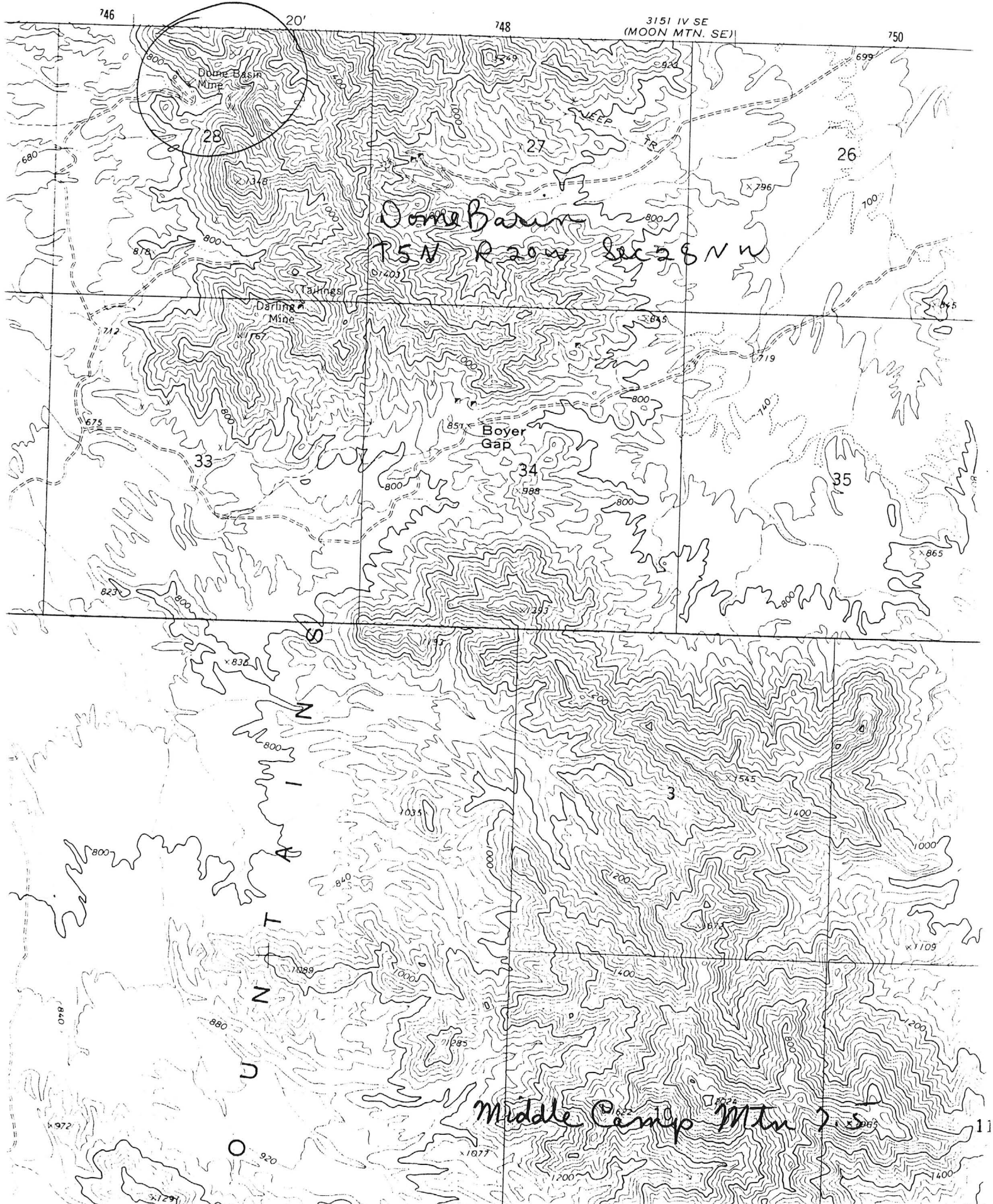
COPPER

GOLD

SILVER

BIBLIOGRAPHY:

ADMMR DOME BASIN FILE



746

20'

748

3151 IV SE
(MOON MTN. SE)

750



28

27

26

Dome Basin
R5N R20W Sec 28 NW

Darling Mine

Boyer Gap

33

34

35

JUNTA

Middle Camp Mtn 25

11

DEPARTMENT OF MINERAL RESOURCES

STATE OF ARIZONA

FIELD ENGINEERS REPORT

Mine The Boyer Mine Date January 12, 1960
District North Plomosa Mtns. (12 miles N of Quartzsite) Yuma Co. Engineer Lewis A. Smith
Subject: Information extracted by Lewis A. Smith from a report by Atwell John Haught of Arican Mines, Ltd. of British Columbia

Owner: Ray Boyer, Quartzsite, Ariz. (previous owner)

Present Owners: Arican Mines Ltd., B.C., Canada

Property: 7 claims (status at present unknown, will try and find out).

Work: 100' shaft in hanging wall of mineralized belt, and considerable drifting. A crosscut was driven on the 100' level to the contact zone (lower down hill from 70' shaft) which penetrated slate and quartzite.

History: The claims were originally located in the 1890's and were worked at the turn of the century. A mill then was operated on the property. Some high grade ore was shipped during the early stages of the operation.

Geology: Haught defined a 100' zone capped by a strong iron gossan and extensive epidotization over a "metavolcanic rock" which he suggests may have been intrusive as a sill between two sedimentary formations. The basalt is a cap rock and lies in a monocline which dips somewhat flatly.

The principal minerals are bornite, cuprite, chalcopyrite, pyrite with gold and silver.

Recommendations: Haught recommends 10,000' of drilling to determine the scope of the mine, which he regarded as developable.

Courtesy of George Freeman of Transarizona Resources (of Arizona,) Casa Grande.

Mr. Richard Kinsey and electrical engineer who lives in Tucson, owns the mine that he calls the Golden K. This property is located about 10 miles NW of Quartzsite. It has been known as the Dome Basin Mine. It may have been called the old Boyer Group or the BB No. 1 back in 1925.

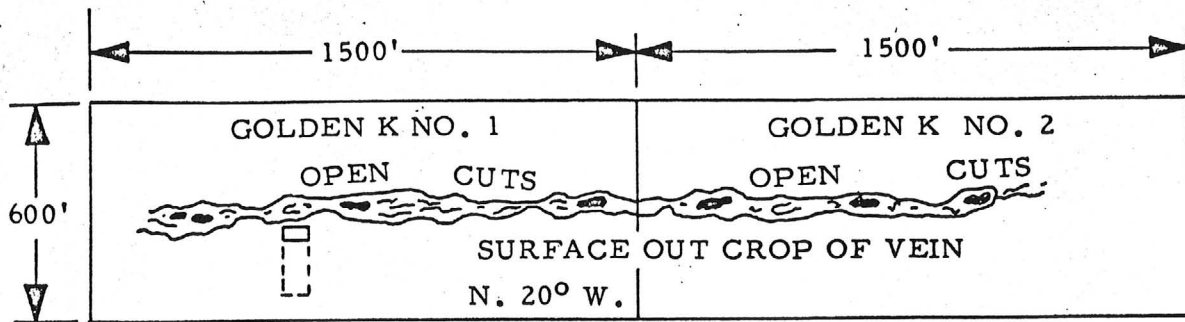
Note GWI Jan 2/1966

XERO COPY

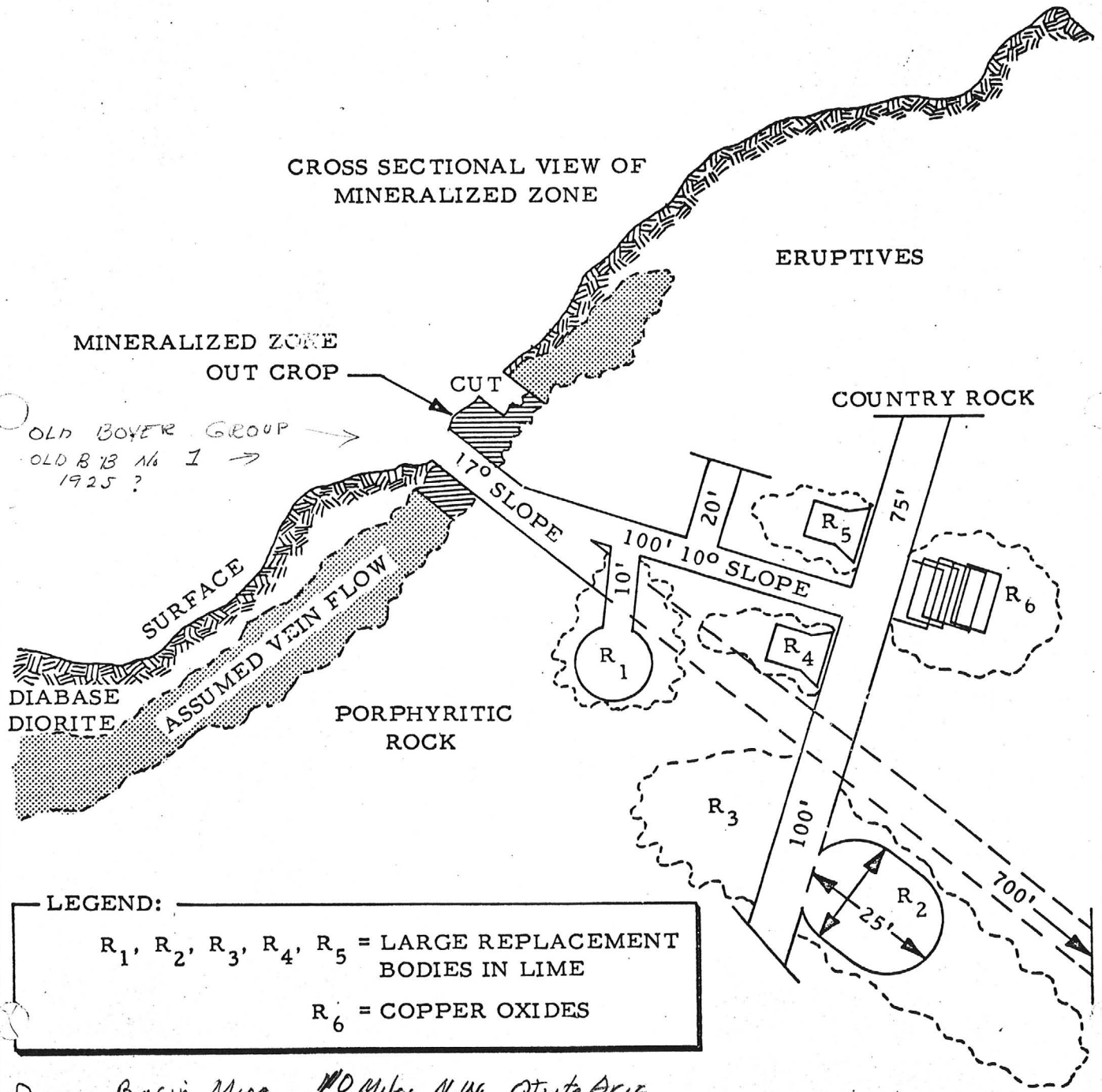
XERO COPY

XERO COPY

XERO COPY



CROSS SECTIONAL VIEW OF MINERALIZED ZONE



LEGEND:

R₁, R₂, R₃, R₄, R₅ = LARGE REPLACEMENT BODIES IN LIME

R₆ = COPPER OXIDES

Dome Basin Mine 10 Miles N.W. Quartzite Ariz

Figure 1. Replacement Ore Bodies Blocked Out

Reid 11/2/67 G.W.I.

DEPARTMENT OF MINERAL RESOURCES

STATE OF ARIZONA
FIELD ENGINEERS REPORT

Mine The Boyer Mine

Date January 12, 1960

District North Plomosa Mtns. (12 miles N of
Quartzite) Yuma Co.

Engineer Lewis A. Smith

Subject: Information extracted by Lewis A. Smith from a report by Atwell John Haught of
Arican Mines, Ltd. of British Columbia

Owner: Ray Boyer, Quartzsite, Ariz. (previous owner)

Present Owners: Arican Mines Ltd., B.C., Canada

Property: 7 claims (status at present unknown, will try and find out).

Work: 100' shaft in hanging wall of mineralized belt, and considerable drifting. A crosscut was driven on the 100' level to the contact zone (lower down hill from 70' shaft) which penetrated slate and quartzite.

History: The claims were originally located in the 1890's and were worked at the turn of the century. A mill then was operated on the property. Some high grade ore was shipped during the early stages of the operation.

Geology: Haught defined a 100' zone capped by a strong iron gossan and extensive epidotization over a "metavolcanic rock" which he suggests may have been intrusive as a sill between two sedimentary formations. The basalt is a cap rock and lies in a monocline which dips somewhat flatly.

The principal minerals are bornite, cuprite, chalcopyrite, pyrite with gold and silver.

Recommendations: Haught recommends 10,000' of drilling to determine the scope of the mine, which he regarded as developable.

Courtesy of George Freeman of Transarizona Resources (of Arizona,) Casa Grande.