



CONTACT INFORMATION

Mining Records Curator
Arizona Geological Survey
1520 West Adams St.
Phoenix, AZ 85007
602-771-1601
<http://www.azgs.az.gov>
inquiries@azgs.az.gov

The following file is part of the

Arizona Department of Mines and Mineral Resources Mining Collection

ACCESS STATEMENT

These digitized collections are accessible for purposes of education and research. We have indicated what we know about copyright and rights of privacy, publicity, or trademark. Due to the nature of archival collections, we are not always able to identify this information. We are eager to hear from any rights owners, so that we may obtain accurate information. Upon request, we will remove material from public view while we address a rights issue.

CONSTRAINTS STATEMENT

The Arizona Geological Survey does not claim to control all rights for all materials in its collection. These rights include, but are not limited to: copyright, privacy rights, and cultural protection rights. The User hereby assumes all responsibility for obtaining any rights to use the material in excess of "fair use."

The Survey makes no intellectual property claims to the products created by individual authors in the manuscript collections, except when the author deeded those rights to the Survey or when those authors were employed by the State of Arizona and created intellectual products as a function of their official duties. The Survey does maintain property rights to the physical and digital representations of the works.

QUALITY STATEMENT

The Arizona Geological Survey is not responsible for the accuracy of the records, information, or opinions that may be contained in the files. The Survey collects, catalogs, and archives data on mineral properties regardless of its views of the veracity or accuracy of those data.

01/09/87

ARIZONA DEPARTMENT OF MINES AND MINERAL RESOURCES FILE DATA

PRIMARY NAME: DIRTY ROSE

ALTERNATE NAMES:

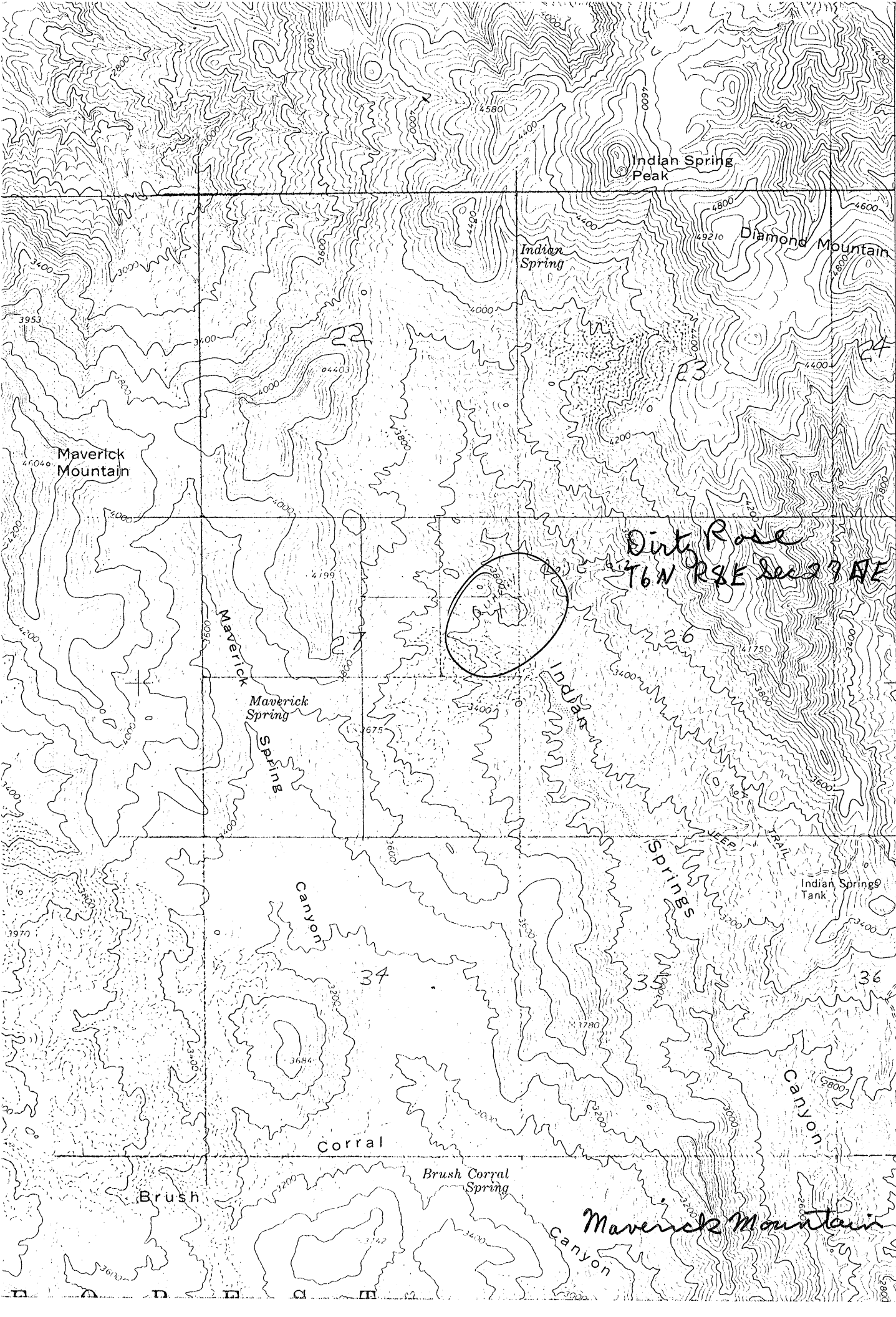
MARICOPA COUNTY MILS NUMBER: 774

LOCATION: TOWNSHIP 6 N RANGE 8 E SECTION 27 QUARTER NE
LATITUDE: N 33DEG 52MIN SEC LONGITUDE: W 111DEG 30MIN SEC
TOPO MAP NAME: MAVERICK MOUNTAIN - 7.5

CURRENT STATUS: PAST PRODUCER

COMMODITY:
GEMSTONE ROSE QUARTZ

BIBLIOGRAPHY:
ADMMR DIRTY ROSE FILE



3747

1 040 000
FEET

3746

3745

3744

50'

T. 6 N

3743

1.5 MI. TO ARIZ. 87

T. 6 N.

BOULDER MTN.J
3751 IV SW

T. 5 N.

Maverick Mountain

DIRTY ROSE

MARICOPA COUNTY

NJN WR 12/12/86: Hilton Cass, (c) Forest Service Zone Office, reported that he has recently visited an area of pegmatites held by Henry Pelham on which Pelham has the Dirty Rose claims located T6N R8E Sec 27 NE, Maricopa County. Mr. Cass showed me large rose quartz samples from a quarry that Mr. Pelham wishes to operate if his operating plan is approved. The quartz may be of gem grade.

RED GUITERREZ

KAP WR 11/4/75 - info. on a number of quartz outcrops in NE $\frac{1}{4}$, Sec. 27 and SE $\frac{1}{4}$, Sec. 26, T6N, R8E

KAP WR 9/25/75 - high grade silica property; have samples running 99.74% SiO₂

KAP WR 4/6/76

" " 4/12/76