



CONTACT INFORMATION

Mining Records Curator
Arizona Geological Survey
1520 West Adams St.
Phoenix, AZ 85007
602-771-1601
<http://www.azgs.az.gov>
inquiries@azgs.az.gov

The following file is part of the

Arizona Department of Mines and Mineral Resources Mining Collection

ACCESS STATEMENT

These digitized collections are accessible for purposes of education and research. We have indicated what we know about copyright and rights of privacy, publicity, or trademark. Due to the nature of archival collections, we are not always able to identify this information. We are eager to hear from any rights owners, so that we may obtain accurate information. Upon request, we will remove material from public view while we address a rights issue.

CONSTRAINTS STATEMENT

The Arizona Geological Survey does not claim to control all rights for all materials in its collection. These rights include, but are not limited to: copyright, privacy rights, and cultural protection rights. The User hereby assumes all responsibility for obtaining any rights to use the material in excess of "fair use."

The Survey makes no intellectual property claims to the products created by individual authors in the manuscript collections, except when the author deeded those rights to the Survey or when those authors were employed by the State of Arizona and created intellectual products as a function of their official duties. The Survey does maintain property rights to the physical and digital representations of the works.

QUALITY STATEMENT

The Arizona Geological Survey is not responsible for the accuracy of the records, information, or opinions that may be contained in the files. The Survey collects, catalogs, and archives data on mineral properties regardless of its views of the veracity or accuracy of those data.

PRINTED: 01/27/2003

ARIZONA DEPARTMENT OF MINES AND MINERAL RESOURCES AZMILS DATA

PRIMARY NAME: DIAMOND CLAIMS 1-4

ALTERNATE NAMES:

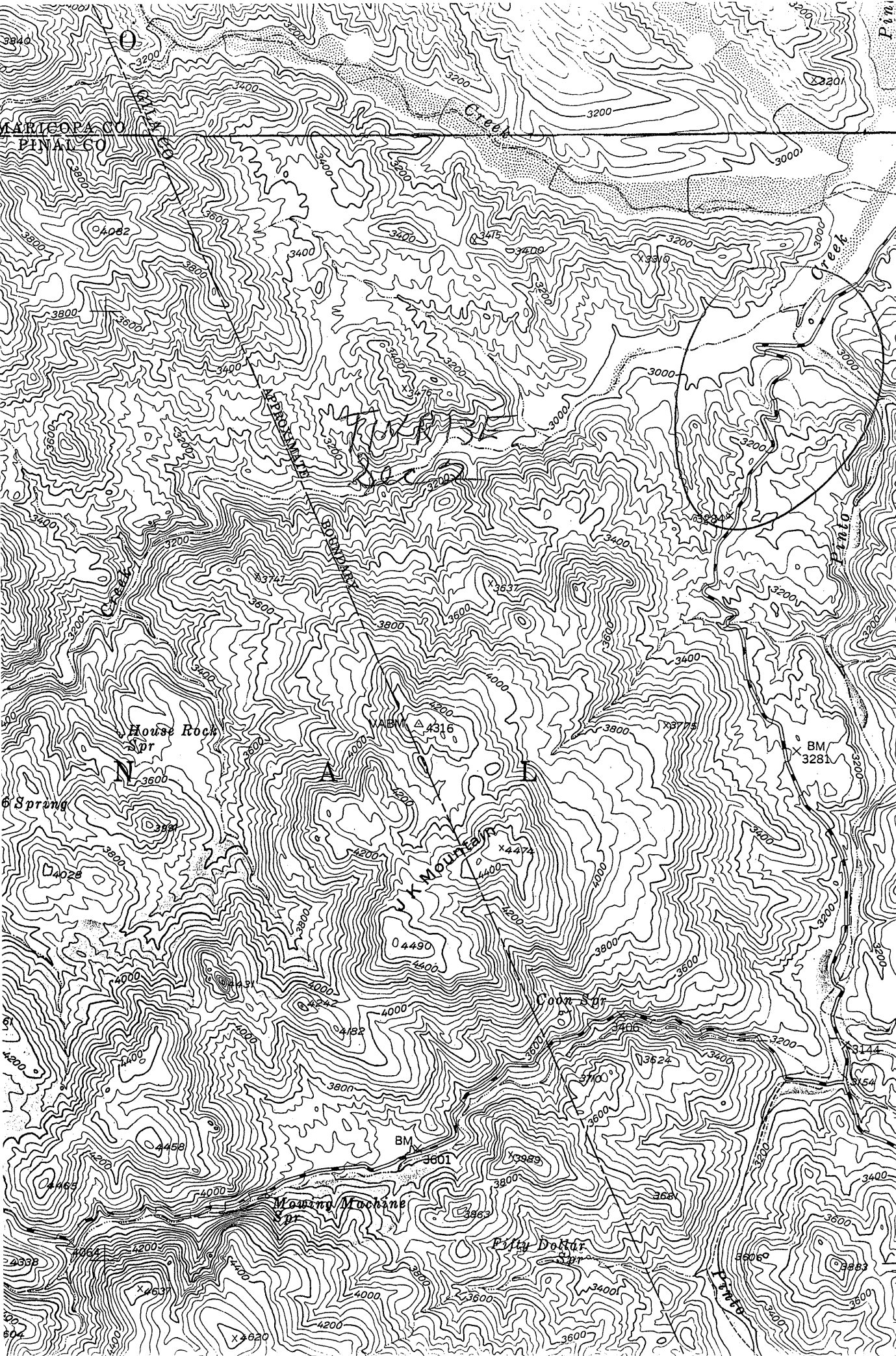
GILA COUNTY MILS NUMBER: 573

LOCATION: TOWNSHIP 1 N RANGE 13 E SECTION 3 QUARTER
LATITUDE: N 33DEG 27MIN 13SEC LONGITUDE: W 111DEG 00MIN 09SEC
TOPO MAP NAME: HAUNTED CANYON - 7.5 MIN

CURRENT STATUS: EXP PROSPECT

COMMODITY:
GOLD PLACER

BIBLIOGRAPHY:
ADMMR DIAMOND CLAIMS 1-4 FILE
AMC 127666-669



HORRELL RANCH 0.1 MI.

Diamond Claims

27°30'

(INSPIRATION)

7.9 MI. TO U. S. 60 AND 70

Haunted Canyon 7.5

25'

DIAMOND CLAIMS 1-4

GILA COUNTY

KAP WR 7/31/87: Mr. Herkenhuff, Recreation and Lands staff person, provided information on a number of activities in the Globe Ranger District of the Tonto National Forest. Included was information that Ruby Snowhardt, Richard Finnegan and Noel Legarda, P O Box 528, Miami, Arizona 85539 completed testing of a placer gold deposit on the Diamond Claims 1-4 (AMC 127666-669) in Sec 2, T1N R13E on Pinto Creek in Gila County. He reported testing had yielded some impressive nuggets and an operating plan was approved to use an 8" floating suction dredge. He went on to explain that before any production started, the water disappeared from Pinto Creek due to increased pumping by the Pinto Valley mine and dryer than usual conditions. The occurrence is on the Haunted Canyon 7.5' quadrangle.
