



CONTACT INFORMATION

Mining Records Curator
Arizona Geological Survey
1520 West Adams St.
Phoenix, AZ 85007
602-771-1601
<http://www.azgs.az.gov>
inquiries@azgs.az.gov

The following file is part of the

Arizona Department of Mines and Mineral Resources Mining Collection

ACCESS STATEMENT

These digitized collections are accessible for purposes of education and research. We have indicated what we know about copyright and rights of privacy, publicity, or trademark. Due to the nature of archival collections, we are not always able to identify this information. We are eager to hear from any rights owners, so that we may obtain accurate information. Upon request, we will remove material from public view while we address a rights issue.

CONSTRAINTS STATEMENT

The Arizona Geological Survey does not claim to control all rights for all materials in its collection. These rights include, but are not limited to: copyright, privacy rights, and cultural protection rights. The User hereby assumes all responsibility for obtaining any rights to use the material in excess of "fair use."

The Survey makes no intellectual property claims to the products created by individual authors in the manuscript collections, except when the author deeded those rights to the Survey or when those authors were employed by the State of Arizona and created intellectual products as a function of their official duties. The Survey does maintain property rights to the physical and digital representations of the works.

QUALITY STATEMENT

The Arizona Geological Survey is not responsible for the accuracy of the records, information, or opinions that may be contained in the files. The Survey collects, catalogs, and archives data on mineral properties regardless of its views of the veracity or accuracy of those data.

PRINTED: 02/06/2003

ARIZONA DEPARTMENT OF MINES AND MINERAL RESOURCES AZMILS DATA

PRIMARY NAME: DESERT CLAIMS

ALTERNATE NAMES:
DICKERSON CLAIMS

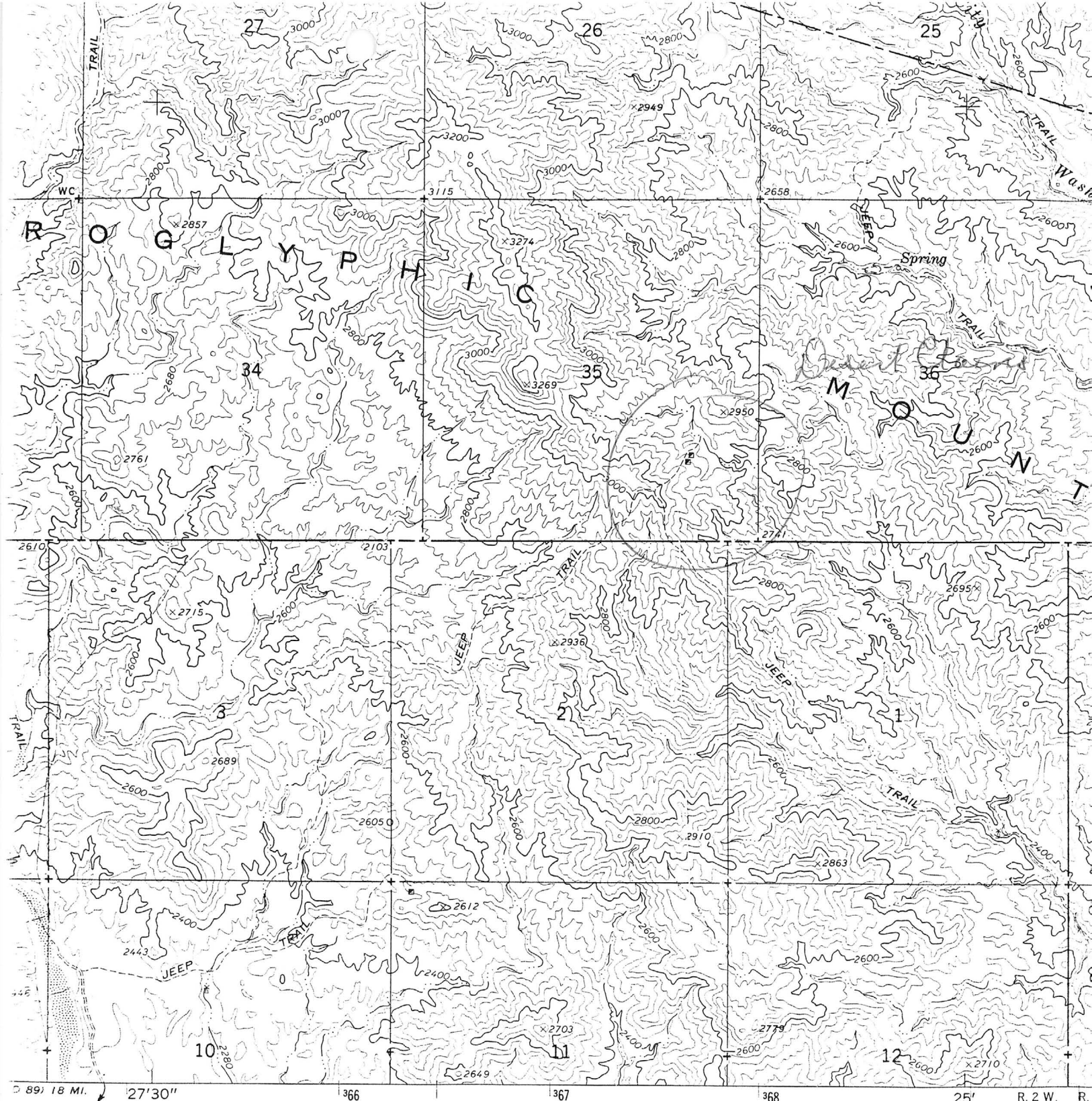
MARICOPA COUNTY MILS NUMBER: 595

LOCATION: TOWNSHIP 7 N RANGE 2 W SECTION 35 QUARTER SE
LATITUDE: N 33DEG 54MIN 08SEC LONGITUDE: W 112DEG 25MIN 50SEC
TOPO MAP NAME: GARFIAS MOUNTAIN - 7.5 MIN

CURRENT STATUS: EXP PROSPECT

COMMODITY:
GOLD LODE
SILVER

BIBLIOGRAPHY:
ADMMR DESERT CLAIMS FILE



89° 18 MI. 27° 30" 366 367 368 25' R. 2 W. R.

SCALE 1:24 000

1 1/2 0 1000 2000 3000 4000 5000 6000 7000 FEET

1 0.5 0 1 KILOMETER

CONTOUR INTERVAL 40 FEET
DATUM IS MEAN SEA LEVEL

MN
14 1/2°
258 MILS

Barfiar Mountain
7.5

THIS MAP COMPLIES WITH NATIONAL MAP ACCURACY STANDARDS
FOR SALE BY U. S. GEOLOGICAL SURVEY, DENVER 25, COLORADO OR WASHINGTON 25, D. C.
A FOLDER DESCRIBING TOPOGRAPHIC MAPS AND SYMBOLS IS AVAILABLE ON REQUEST

DESERT CLAIMS

MARICOPA COUNTY

KAP WR 5/22/88: R. D. Dickerson (card) of Arizona Desert Mineral Development (card) P O Box 1589, Black Canyon Stage 1, Phoenix, Arizona 85029 was in for information on where to ship gold ores. He and his son Terrie are planning to continue to operate a samll gold mine on gold bearing quartz veins in the SE Sec 35, T7N R2W in the Morgan City Wash area of Maricopa County. They have previously attempted small production using their own mill and amalgamation plant with only limited success. R. D. Dickerson provided a copy of their claim maps and some assay results of sampling done by the Exploration Company to Texas to whom they had submitted the property. He said the company wanted to option the property and wanted some free time which he did not want to give. Their claims are the Desert Claims (file) and the property is also known as the Dickerson Claims, Maricopa County. A message can be left for Mr. Dickerson at his son's (Terrie) phone, 899-4075. Mr. Dickerson lives at the property.

DICKERSON CLIAMS
MORGAN CITY WASH
MARICOPA, ARIZONA

SAMPLE NO.	DESCRIPTION	Au (O/T)	Ag (O/T)
AZ133	Ox. vn. @ Old working @ Stop #3	0.121	0.22
AZ134	Altered Ox. shale argillite in North of adit in working pit	0.031	<0.1
AZ135	OZ. Vein w/massive Hematite & muscovite O/C grab NW of adit off road	0.001	<0.1
AZ136	Sl. Ox. Qz. O/C w/mica schist & minor copper stain - on top of hill S. of main trench	0.001	<0.1
AZ137	Highly Frx. Qz. Float w/Ox. Frx w/Gossan - Pit NW of Adit	ND	<0.1
AZ138	Moderately Ox. Qz vein grab w/Hematite - vein above adit	0.005	0.1
AZ139	QZ. vn. w/Ox. Hematite & argillite Country Rock - Midway up wash 150' S. of mine	ND	5.32
AZ140	Calcite O/C w/poss. siderite w/zenolith of Qtz & Black to dark gray CaCO ₃ - Cut in Road South of Trench 75'	0.044	<0.1
AZ141	O/C grab Black Hematite Argillite vn. - 20' N. of Adit	0.061	<0.1
AZ142	Ox. Qz. Float w/black Hematite - on rd. west of pit NW of adit - between porphy & andesite	ND	<0.1
AZ143	Ox. Mica shale (argillite) - 1st Backhoe pit S. of trench above adit	ND	4.19
AZ144	Highly Ox. Qz O/C grab - Prospector pit NW of Adit - off rd.	0.001	<0.1
AZ145	Highly Ox. Qz Float - Prospector pit NW of adit - off rd.	0.001	<0.1
AZ146	Sl. Ox to white Qz Float - 100' South Adit	ND	<0.1
AZ147	Milky Qz vein w/minor black in wash west of main trench	ND	<0.1
AZ148	Mod Ox Qz O/C NE side of pit N. of Adit area (2nd stop)	0.001	<0.1
AZ149	Highly Ox brecciated Qz O/C - Prospect pit off rd west of adit	ND	<0.1
AZ150	Ox. Qtz. Float w/black bexwork (gossan) & MICA - off rd. NW of adit	ND	<0.1
AZ151	Ox Grn Mica Schist-15' S of 1st pit S. of trench above adit	0.003	<0.1
AZ152	Ox. Alt Qtz. Mica Schist O/C - 100' NW of adit on road	ND	<0.1
AZ153	Argillite Shale - 18" W. of Qtz Vein above adit	0.001	<0.1
AZ154	Argillite Mica Schist - 18" E. of Qtz UN above adit	ND	<0.1

THE EXPLORATION COMPANY

DESERT CLAIMS (file)
MARICOPA COUNTY

DICKERSON CLAIMS
MORGAN CITY WASH
MARICOPA, ARIZONA

UNION SQUARE
10101 REUNION PLACE
10TH FLOOR
SAN ANTONIO, TEXAS 78216
(512) 525-1115

SAMPLE NO.	DESCRIPTION	Au (O/T)	Ag (O/T)
AZ101	1' Channel - Ox. Qz. & Schist FX-Fill @ Adit	0.057	<0.1
AZ102	4" Channel - Ox. Qz. & Schist FX-Fill @ Adit 60° N. of Az 101	0.017	<0.1
AZ103	2" H. Channel @ N. End of Pit - Alt GR/GY CALC. Shist w/CaCO3 & 1" Ox. FX.	0.005	<0.1
AZ104	1' Channel - Ox. Qz. vn. - 25' S of AZ101 in Adit Face	0.027	0.1
AZ105	8' V. Channel dwn vein - Red kaolin next to Qz. in adit	0.529	0.1
AZ106	18" Channel Across in Back of AZ105	0.044	<0.1
AZ107	Channel Sample Down Ox. Qz. Vein - Biggest Shaft of old Workings w/Timbers West Wall of N-S pit	2.362	0.2
AZ108	Qz outcrop(?) on strike w/workings - South over hill	0.002	<0.1
AZ109	Vuggy Ox Qz w/Hematite @ open pit N20W of adit (Stop #2)	0.001	<0.1
AZ110	4" Chan - Ox. Qz. vn. - In Vert Fx - Upper Trench above AZ104	0.156	0.17
AZ111	6" Chan - Ox. Qz. vn. - 10" N. of AZ107	0.427	0.1
AZ112	2' Qz O/C grab - S. of AZ108 - S. Side of Gulley	ND	<0.1
AZ113	4" Qz Veinlets in large pit South of Trench	0.378	0.11
AZ114	Qz. O/C grab - West Side of Hill on Road	ND	<0.1
AZ115	Qz O/C grab - Top of Hill	0.001	<0.1
AZ116	Qz O/C grab - Dwn Hill By Road	0.008	<0.1
AZ117	O/C grab - Dk. BL. MICA Schist - N50° E. Vein up Hill	ND	<0.1
AZ118	Qz. O/C grab - N20°W of Mine @ Prospect on Road	ND	<0.1
AZ119	QZ O/C grab w/Hematite pseudomorphs - West of Mine	ND	<0.1
AZ120	QZ Float - Up Strike w/Irridescence	ND	<0.1
AZ121	Rhyolite Por. Alt. Ft. Wall Rx. - N50°E Uphill from bleached prospect hole	0.024	0.23
AZ122	Ox. Qz. Fx-Fill (N50°E) uphill from Az 121	0.003	0.1
AZ123	Qz. vn. O/C - Hilltop	ND	<0.1
AZ124	ALT. WH. O/C prospect on Road (leaving)	ND	<0.1
AZ125	Qz. Dump Rx @ Prospect w/Pyrite	1.019	<0.1
AZ126	Fx-Fill - State Land	0.012	<0.1
AZ127	Fx-Fill - State Land	0.013	0.1
AZ130	8" Qz. UN. w/massive hematite & Muscovite - Prospect Pit due west (N70°E) of main vein (Stop #2)	ND	0.1
AZ131	Ox. Qz. O/C in mica schist - N. of Deep Hole Prospect (Stop #3)	ND.	0.1
AZ132A	Ox. Qz. w/mica schist & sh. wall Rx - Old workings Dump @ (Stop #3)	0.129	<0.1
AZ132B	Ox. Qz. Crystal w/mica schist - Old workings dump @ Stop #3	ND	0.1