



## **CONTACT INFORMATION**

Mining Records Curator  
Arizona Geological Survey  
1520 West Adams St.  
Phoenix, AZ 85007  
602-771-1601  
<http://www.azgs.az.gov>  
[inquiries@azgs.az.gov](mailto:inquiries@azgs.az.gov)

The following file is part of the

Arizona Department of Mines and Mineral Resources Mining Collection

## **ACCESS STATEMENT**

These digitized collections are accessible for purposes of education and research. We have indicated what we know about copyright and rights of privacy, publicity, or trademark. Due to the nature of archival collections, we are not always able to identify this information. We are eager to hear from any rights owners, so that we may obtain accurate information. Upon request, we will remove material from public view while we address a rights issue.

## **CONSTRAINTS STATEMENT**

The Arizona Geological Survey does not claim to control all rights for all materials in its collection. These rights include, but are not limited to: copyright, privacy rights, and cultural protection rights. The User hereby assumes all responsibility for obtaining any rights to use the material in excess of "fair use."

The Survey makes no intellectual property claims to the products created by individual authors in the manuscript collections, except when the author deeded those rights to the Survey or when those authors were employed by the State of Arizona and created intellectual products as a function of their official duties. The Survey does maintain property rights to the physical and digital representations of the works.

## **QUALITY STATEMENT**

The Arizona Geological Survey is not responsible for the accuracy of the records, information, or opinions that may be contained in the files. The Survey collects, catalogs, and archives data on mineral properties regardless of its views of the veracity or accuracy of those data.

06/19/91

ARIZONA DEPARTMENT OF MINES AND MINERAL RESOURCES FILE DATA

PRIMARY NAME: DAVIS CLAIMS

ALTERNATE NAMES:

C R ROBERTS

GRAHAM COUNTY MILS NUMBER: 51

LOCATION: TOWNSHIP 4 S RANGE 19 E SECTION 32 QUARTER E2  
LATITUDE: N 33DEG 02MIN 29SEC LONGITUDE: W 110DEG 15MIN 00SEC  
TOPO MAP NAME: SAN CARLOS RESERVOIR - 15 MIN

CURRENT STATUS: UNKNOWN

COMMODITY:

COPPER  
MANGANESE  
IRON

BIBLIOGRAPHY:

ADMMR FILE  
SEE: ADMMR COPPER BASIN GROUP FILE  
ADMMR DAVIS CLAIMS  
SEE: ADMMR HOUSTON BOWMAN FILE  
ADMMR U FILE

DEPARTMENT OF MINERAL RESOURCES  
STATE OF ARIZONA  
FIELD ENGINEERS REPORT

Mine C. R. ROBERTS & DAVIS PROPERTIES

Date July 24, 1957

District GRAHAM COUNTY

Engineer Lewis A. Smith

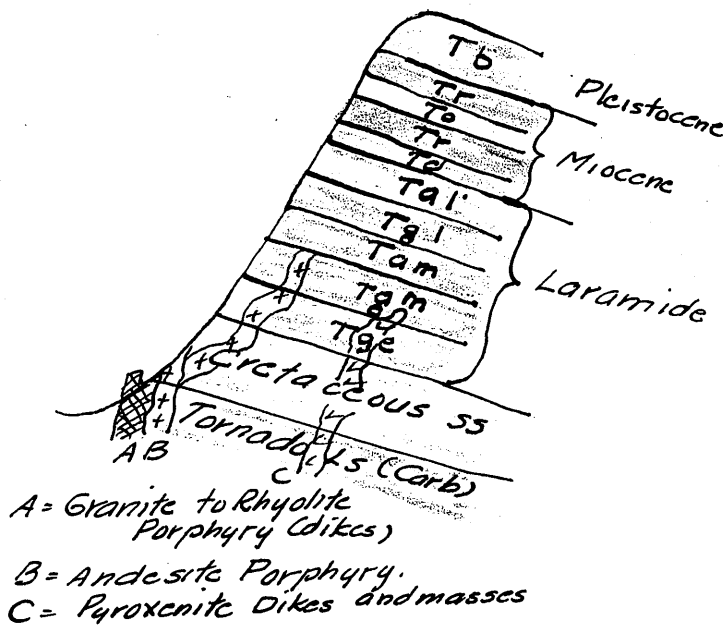
Subject:

Examination of C. R. Roberts and Davis Properties NW of Little Stanley Butte, NW corner of Graham County and E line of Pinal County.

These properties, which are adjacent, lie along Hawk Canyon and south and east of Rawhide Mountain, and extending south of Hawk Canyon, southeast eastward to the base of Little Stanley Butte. The Roberts property lies in Section 33, T<sup>4</sup>S, R19E, as does most of the Davis property.

The area consists of a series of flows which are typical of the Cordilleran Region Series. The section below (Rawhide Mtn.) shows this series. These flows lie upon Cretaceous sandstone which in turn rests upon the Paleozoics and PreCambrian granite.

The mineralization consists of a series of mineralized zones (faults & shears) mostly associated with the dike fracture zone intersections. The principal values are in Ag and lead with localized copper. A breccia pipe intrudes the andesitic flows at the base of Little Stanley Butte.



DEPARTMENT OF MINERAL RESOURCES  
STATE OF ARIZONA  
FIELD ENGINEERS REPORT

Mine ROBERTS IRON ORE DEPOSIT

Date August 13, 1957

District Near Stanley, GRAHAM CO.

Engineer Lewis A. Smith

Subject: Information from Owner - Office Call.

Owner: C. R. Roberts, 644 West Main St., Mesa, Arizona.

Claims: Now being laid out.

Geology: Iron gossan, 100 to 150' wide and over a mile long. Assays, on Limonite-hematite, show 55+% of iron, with low sulphur and phosphorous. A barite vein lies on the south side of the gossan. No development work has been done and little is yet known as to reserves. Indications are that there is a considerable reserve, if it continues to an appreciable depth. The gossan zone appears to be in part in Tornado limestone and may overlie a large pyritic body. Some low silver values were found.

DEPARTMENT OF MINERAL RESOURCES  
STATE OF ARIZONA  
FIELD ENGINEERS REPORT

Mine Roberts Iron Deposit

Date October 4, 1957

District Stanley Butte, Graham County

Engineer Lewis A. Smith

Subject:

Sec. 12, T5S, R19E.

Owner: C. R. Roberts

Mr. Roberts stated that he had had two feelers relative to his iron ore, both parties expressing willingness to inspect the deposit. Preliminary samples by Roberts, indicate 56+% iron with satisfactory SiO<sub>2</sub>, phosphorous and sulphur.

He also reported a large iron deposit in southern Utah, which was tested by the Bureau of Mines, Salt Lake, and their tests indicated that it could readily be beneficiated up to 60+%. Kaiser is interested and may have their engineers examine the property.