



CONTACT INFORMATION

Mining Records Curator
Arizona Geological Survey
1520 West Adams St.
Phoenix, AZ 85007
602-771-1601
<http://www.azgs.az.gov>
inquiries@azgs.az.gov

The following file is part of the

Arizona Department of Mines and Mineral Resources Mining Collection

ACCESS STATEMENT

These digitized collections are accessible for purposes of education and research. We have indicated what we know about copyright and rights of privacy, publicity, or trademark. Due to the nature of archival collections, we are not always able to identify this information. We are eager to hear from any rights owners, so that we may obtain accurate information. Upon request, we will remove material from public view while we address a rights issue.

CONSTRAINTS STATEMENT

The Arizona Geological Survey does not claim to control all rights for all materials in its collection. These rights include, but are not limited to: copyright, privacy rights, and cultural protection rights. The User hereby assumes all responsibility for obtaining any rights to use the material in excess of "fair use."

The Survey makes no intellectual property claims to the products created by individual authors in the manuscript collections, except when the author deeded those rights to the Survey or when those authors were employed by the State of Arizona and created intellectual products as a function of their official duties. The Survey does maintain property rights to the physical and digital representations of the works.

QUALITY STATEMENT

The Arizona Geological Survey is not responsible for the accuracy of the records, information, or opinions that may be contained in the files. The Survey collects, catalogs, and archives data on mineral properties regardless of its views of the veracity or accuracy of those data.

PRINTED: 11-21-2006

ARIZONA DEPARTMENT OF MINES AND MINERAL RESOURCES AZMILS DATA

PRIMARY NAME: DAVENPORT PLACER

ALTERNATE NAMES:

YAVAPAI COUNTY MILS NUMBER: 461

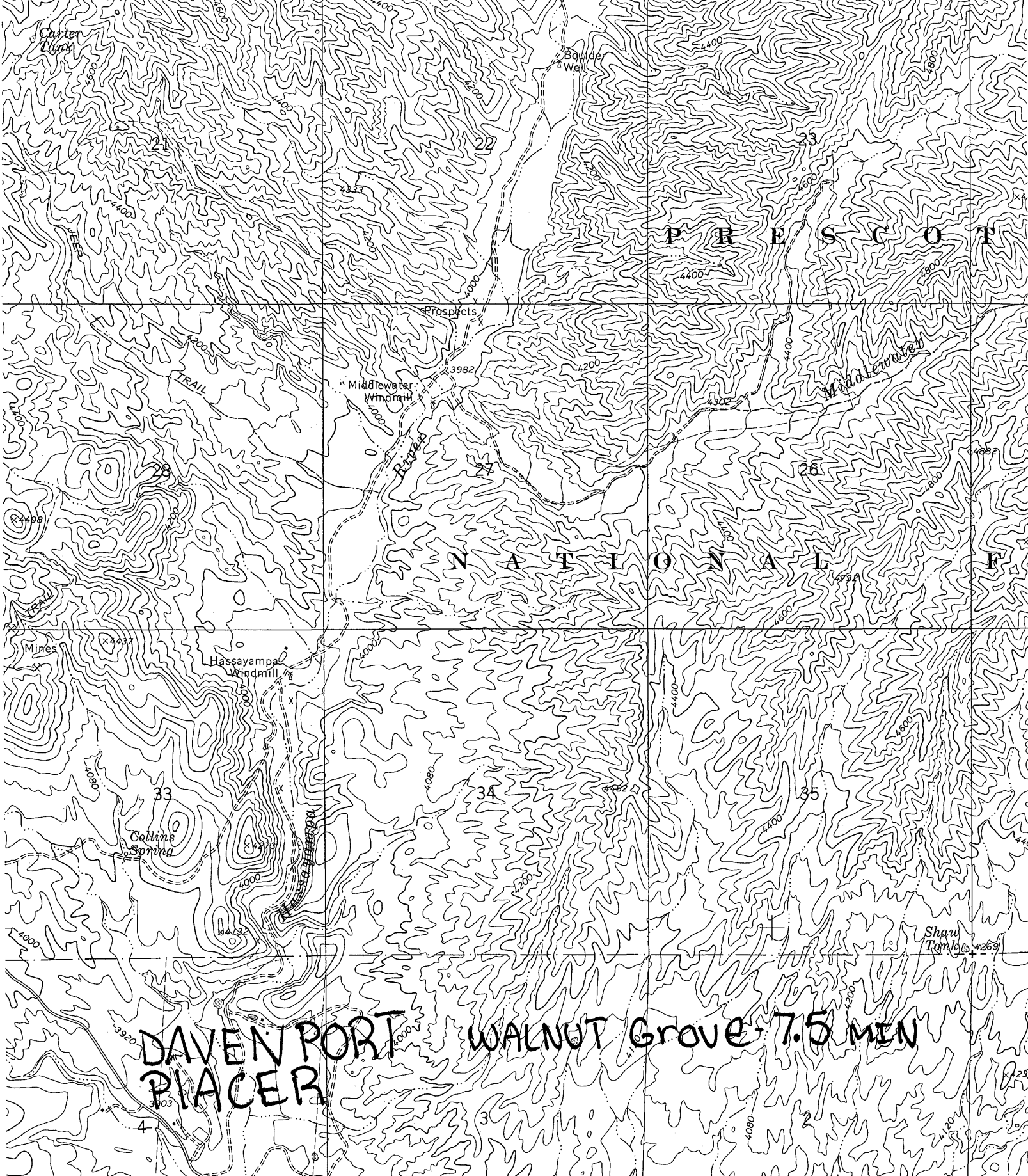
LOCATION: TOWNSHIP 12 N RANGE 3 W SECTION 27 QUARTER N2
LATITUDE: N 34DEG 21MIN 40SEC LONGITUDE: W 112DEG 33MIN 28SEC
TOPO MAP NAME: WALNUT GROVE - 7.5 MIN

CURRENT STATUS: PAST PRODUCER

COMMODITY:
GOLD PLACER

BIBLIOGRAPHY:
ADMMR DAVENPORT PLACER FILE

5' 355 3452 1 NE (WILHOIT) WILHOIT 5 MI. 358 32'30" 359



DAVENPORT
PLACER

WALNUT GROVE - 7.5 MI

Shaw
Tombs 4269

MEMO

October 6, 1960

DAVENPORT PLACER

Travis P. Lane

Yarnell Co.

Visited Jack Stewart's (Stewart Motor Co. of Phoenix) placer operation on the Hassayampa river. The property consists of 2 placer claims located about 2 miles above the point where the Wagoner road crosses the river. Mr. Davenport of Yarnell owns the claim. He conducted a one-man placer operation here for a number of years but gave up recently for health reasons.

Stewart has moved in a considerable amount of equipment; drag line shovel, trommel, jig, screening plant, etc. preparatory to undertaking operations on a fairly large scale. However, water is very low in the river and work to date has been limited to only small batch-run tests. The main working places are Davenport's pit (approx. 40' long by 20' wide by 20 to 30' deep) and a gravel bench above it. The pit and bench workings are on the east side of the river. Bedrock in the pit is overlain by about 10' of pay gravel and this in turn is overlain by about 15' of barren material which must be stripped off. Serious work will have to wait for seasonal precipitation on the watershed above here. 2 men are employed including W. B. Tenney who pushes the job.

Visited the Davenport placer diggings in the Hassayampa River, operated by Jack Stewart. Much heavy equipment has been moved in and a washing plant set up. No one was present at the time of visit and the work done seems to have been of a test nature. It is said that the water volume in the river is unusually low this year.

TRAVIS P. LANE, Weekly Report March 18, 1961

MEMO

September 27, 1961

DAVENPORT PLACER (gold)

Travis P. Lane

Visited the Davenport Placer, where Davenport and Schley, as partners, were installing a small washing plant to work the bench gravels. The plant consists of a ramp slide with grizzly, a revolving drum disintegrator with screen discharge, sluice boxes, a Pan American jig and a Diesel-Generator power unit. The material will be gathered by a small gasoline-driven double drum slusher hoist.

Davenport advised that he had terminated the lease under which Jack Stewart had operated for a time. Stewart installed a fairly elaborate washing plant and moved in much heavy equipment but did practically no work, apparently because of lack of water. The lease was terminated because of non-performance on the job and also apparently failure to make certain payments. Davenport reports practically no water in the Hassayampa at the present time ("driest ever known") and he proposes to wait upon freshets and perhaps snow run offs after the turn of the year.