



## CONTACT INFORMATION

Mining Records Curator  
Arizona Geological Survey  
1520 West Adams St.  
Phoenix, AZ 85007  
602-771-1601  
<http://www.azgs.az.gov>  
[inquiries@azgs.az.gov](mailto:inquiries@azgs.az.gov)

The following file is part of the

Arizona Department of Mines and Mineral Resources Mining Collection

## ACCESS STATEMENT

These digitized collections are accessible for purposes of education and research. We have indicated what we know about copyright and rights of privacy, publicity, or trademark. Due to the nature of archival collections, we are not always able to identify this information. We are eager to hear from any rights owners, so that we may obtain accurate information. Upon request, we will remove material from public view while we address a rights issue.

## CONSTRAINTS STATEMENT

The Arizona Geological Survey does not claim to control all rights for all materials in its collection. These rights include, but are not limited to: copyright, privacy rights, and cultural protection rights. The User hereby assumes all responsibility for obtaining any rights to use the material in excess of "fair use."

The Survey makes no intellectual property claims to the products created by individual authors in the manuscript collections, except when the author deeded those rights to the Survey or when those authors were employed by the State of Arizona and created intellectual products as a function of their official duties. The Survey does maintain property rights to the physical and digital representations of the works.

## QUALITY STATEMENT

The Arizona Geological Survey is not responsible for the accuracy of the records, information, or opinions that may be contained in the files. The Survey collects, catalogs, and archives data on mineral properties regardless of its views of the veracity or accuracy of those data.

05/05/87

ARIZONA DEPARTMENT OF MINES AND MINERAL RESOURCES FILE DATA

PRIMARY NAME: DANNY BOY GROUP

ALTERNATE NAMES:

ADAMS GROUP  
PUZZLER  
SILVER DOLLAR

YUMA COUNTY MILS NUMBER: 10

LOCATION: TOWNSHIP 4 S RANGE 18 W SECTION 31 QUARTER SW  
LATITUDE: N 33DEG 01MIN 54SEC LONGITUDE: W 114DEG 09MIN 46SEC  
TOPO MAP NAME: CASTLE DOME MTS - 15 MIN

CURRENT STATUS: PAST PRODUCER

COMMODITY:

LEAD  
SILVER  
FLUORINE FLUORSPAR  
VANADIUM  
MOLYBDENUM  
COPPER

BIBLIOGRAPHY:

KEITH, S.B., 1978, AZBM BULL. 192, P. 117  
ADMMR "U" FILE, Pb  
AZBM BULL. 134, P. 101  
ADMMR DANNY BOY GROUP FILE  
ADMMR A.L. FLAGG VANADIUM RPT. BOOK VI

6/22/67

mailed to D. L. Casey

**DEPARTMENT OF MINERAL RESOURCES**

STATE OF ARIZONA

**FIELD ENGINEERS REPORT**

Mine Danny Boy Group of Claims *CD Release Sheet* Date 6/7/67  
District Castle Dome Dist. Yuma Co. Engineer Lewis A. Smith  
Subject: Visit and Conference with D. L. Casey (owner) 6/7/67.

This property consists of three unpatented claims owned by D. L. Casey, P.O. Box 331, Yuma, Arizona. (Casey lives at the mine which lies east of the Linda Group, owned by Lyman Wall). At present, James Wright and Phil Barlow of Martinez Landing and Yuma Test Station, are preparing to reopen an old shaft on the Danny Boy No. 1. They have a mill (gravity by tables) one mile north of the Linda Mill. They have a vein of galena-cerussite-anglesite ore in fluorite. This is said to be over a foot wide and to assay about 30-35 percent lead. Mr. Casey was unable to do much recent work because of a heart attack. Water is very much in short supply due to drought in this area, and it has to be hauled for a long way.

*See A.B.M. Bull. 134*

DANNY BOY GROUP

YUMA COUNTY  
CASTLE DOME DISTRICT

James Wright has made several changes and additions to his scheelite mill south of Wagoner and now feels he can begin mining on a regular basis. GW QR 2/72

---

ARIZONA DEPARTMENT OF MINES AND MINERAL RESOURCES

INFORMATION FROM MINE CARDS IN MUSEUM

USA Az. <sup>Vuma</sup> ~~Yavapai~~ Co.  
Puzzler Mine

MM 0 639 Vanadinite

MILS # 10

3-AKA's

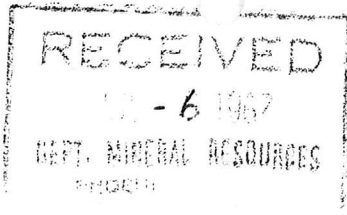
Danny Boy Group (sic)

DANNY BOY GROUP (file)  
(Adams Mine group)

YUMA CO.  
Castle Dome District

Danny Boy, Puzzler, Silver Dollar  
T 4S R 18W Sec. SW $\frac{1}{4}$  31

see: Index of Mining Properties in Yuma Co.  
Bulletin 192 - 1978, Pg. 116  
Bureau of Geology and Mineral Technology



July 5-1967

Dept. of Mineral Resources  
State of Arizona.

Corrections on Field Eng. Report:

- (1) Claims lies East of the Mabel Group owned by Charles Childers.
- (2) James Wright and Phil Barlow are from Yuma Arizona, not Martinez Landing and the Yuma Proving Grounds.
- (3) They do not have a Mill.
- (4) I own a Crusher, Set of Rolls and a Joplin Jig that we will use in this set up.
- (5) The description of the ore bodies is as accurate as possible at the present.
- (6) We have two Shafts timbered and ready to work at the present time, One on the Puzler claim and one on the Old Adams no. 2 claim.
- (7) There are three Hoists ready for use Plus other equipment all are in good shape.

I am very sorry but I am unable to give you any of the Assay reports or other records on the property as they were all distoyed in a fire we had a few years back, However any records you May have on the Old Adams property listed in Bulletin 134 U. of Arizona Press are accurate and apply to this property as they are one and the same.

I hope that this will be of help,

Very Truly Yours

D. L. Casey  
P. O. Box 331  
Yuma, Arizona, 85364

The Original Report was Made by Mr. Lewis A. Smith 6/7/67 On the 'Danny Boy Group of Claims, Castle Dome Dist., Yuma County. This is the Name of the Group. Water is Hauled from either the Gila River, Martinez Lake area or the Imperial Dam Area.