



CONTACT INFORMATION

Mining Records Curator
Arizona Geological Survey
1520 West Adams St.
Phoenix, AZ 85007
602-771-1601
<http://www.azgs.az.gov>
inquiries@azgs.az.gov

The following file is part of the

Arizona Department of Mines and Mineral Resources Mining Collection

ACCESS STATEMENT

These digitized collections are accessible for purposes of education and research. We have indicated what we know about copyright and rights of privacy, publicity, or trademark. Due to the nature of archival collections, we are not always able to identify this information. We are eager to hear from any rights owners, so that we may obtain accurate information. Upon request, we will remove material from public view while we address a rights issue.

CONSTRAINTS STATEMENT

The Arizona Geological Survey does not claim to control all rights for all materials in its collection. These rights include, but are not limited to: copyright, privacy rights, and cultural protection rights. The User hereby assumes all responsibility for obtaining any rights to use the material in excess of "fair use."

The Survey makes no intellectual property claims to the products created by individual authors in the manuscript collections, except when the author deeded those rights to the Survey or when those authors were employed by the State of Arizona and created intellectual products as a function of their official duties. The Survey does maintain property rights to the physical and digital representations of the works.

QUALITY STATEMENT

The Arizona Geological Survey is not responsible for the accuracy of the records, information, or opinions that may be contained in the files. The Survey collects, catalogs, and archives data on mineral properties regardless of its views of the veracity or accuracy of those data.

ARIZONA DEPARTMENT OF MINES AND MINERAL RESOURCES AZMILS DATA

PRIMARY NAME: D AND M

ALTERNATE NAMES:

BROOM
BAKER

YAVAPAI COUNTY MILS NUMBER: 672A

LOCATION: TOWNSHIP 14 N RANGE 3 E SECTION 11 QUARTER SW
LATITUDE: N 34DEG 36MIN 24SEC LONGITUDE: W 112DEG 00MIN 28SEC
TOPO MAP NAME: CHERRY - 7.5 MIN

CURRENT STATUS: PAST PRODUCER

COMMODITY:

GOLD
SILVER
IRON

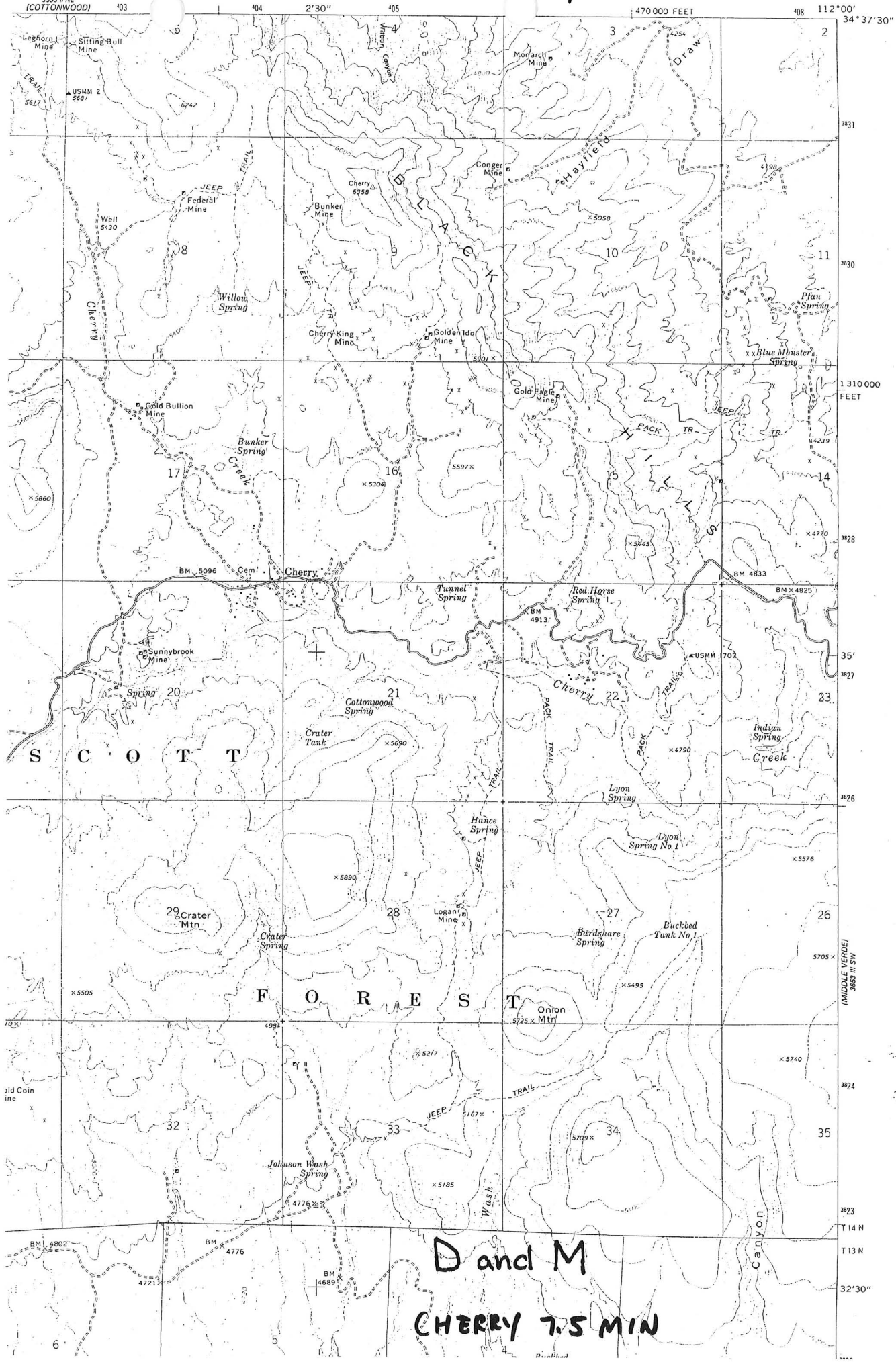
BIBLIOGRAPHY:

USGS CHERRY QUAD
ADMMR D AND M MINE FILE
USGS MINERAL RESOURCES OF THE US PART 1 1907
P 182

35E

3553 # NE (COTTONWOOD)

SE/4 MINGUS MTN. 15' QUADRANGLE



**D and M
CHERRY T.S. MIN**

(MIDDLE VERGE)
3553 # SW

May 27, 1957

D & M MINE
Formerly "BROOM" or
"BAKER" PROPERTY

YAVAPAI COUNTY

No information on this property.

MARK GEMMILL

DEPARTMENT OF MINERAL RESOURCES
STATE OF ARIZONA
OWNERS MINE REPORT

MD-11

Date April 31, 1940

1. Mine D & M Mine (Formerly the Broom.)
2. Mining District & County Black Hills
Yavapai County
3. Former name Broom or Baker Property
4. Location 15 miles South of Cottonwood,
Ariz. Take Camp Verde road
south to ? sign Etta Canyon.
5. Owner Roy D. Dale
6. Address (Owner) Cottonwood, Arizona.
7. Operator Same
8. Address (Operator) Same
9. President
10. Gen. Mgr.
11. Mine Supt.
12. Mill Supt.
13. Principal Metals Gold and Silver
14. Men Employed
15. Production Rate Not running
16. Mill: Type & Cap. Ball, 7 ton
17. Power: Amt. & Type Auto. Gas, 30 H. P.
18. Operations: Present Development.
19. Operations Planned Mining, milling ore deposits developed and continuing development.
20. Number Claims, Title, etc. 12 claims grouped, unpatented.
21. Description: Topography & Geography The Black hills, slopes and drains east to the Verde
river, gently sloping for 2 to 3 miles and verges to
deep rugged canyons abruptly and continues to the Range Crest. A series of stringer veins
which strike north and south on the east side of the black hills low draws and converges
near the valley at a fault or shear zone, and also pitch north west. Walls foot granite
hangings altered granodiorite.
22. Mine Workings: Amt. & Condition About 2000 ft. tunnel, drift and open cuts. Ore of mill
grade blocked out, estimate ore in sight about 2000 tons,
on the several claims, small surface ore bodies formed from the five stringer veins
which converge on the fault or shear zone.

23. Geology & Mineralization A gently sloping base or bottom of granite with series of shear perpendicular steps or faults possibly pre cambrian following ore contours of the hills to the fault zone. Ore consists of brecciated quartz with vugs and forms of limonite, hematite, pyrite, banded calcite and some galena and silver oxide as development gains depth.

24. Ore: Positive & Probable, Ore Dumps, Tailings Ore positive 2000 tons, probable 500,000. 50 ton tailings and concentrates. On No. 5 Mizpeare Claim which has old workings about 1500 tons including some pillars in old workings. In a sample assay including 20 different samples at 20 ft. intervals depth and horizontal across the ore lense, 5 in all. Low .014 to 3.22.

24-A Vein Width, Length, Value, etc.

25. Mine, Mill Equipment & Flow Sheet At mill, small fine and coarse ore bins, 6 x 4 Ellis Chalmers Crusher set 4" to 3/4", Auto belt feeder table, model feed box, Ball mill, 7 ton, 16 hrs., 60 mesh to closed circuit, 8 x 12 Simplex mineral jig, over tramway concentrates to Denver clean up pan converted to amalgamation to uniform concentrates to percolating precipitation interval cyaniding equipment.

26. Road Conditions, Route 4 miles forest road from Camp Verde highway. Not very good.

27. Water Supply Ample at present. Can be improved gravity to mill, improvements by present owner.

28. Brief History Has produced intermittently for 50 or 60 years, located by owner 1934-35-36.

29. Special Problems, Reports Filed None so far except capital to keep going.

30. Remarks Yes, will be glad to cooperate with the Mineral Resource Dept. I am just hard working prospector.

31. If property for sale: Price, terms and address to negotiate.

For sale. Price personal, satisfactory terms.

32. Signed..... Roy D. Dale
Cottonwood, Arizona

33. Use additional sheets if necessary.

DEPARTMENT OF MINERAL RESOURCES
STATE OF ARIZONA
MINE OWNER'S REPORT

Date April 31/1940

1. Mine D & M - Formerly The Broom
2. Location 15 miles south of Cottonwood, Arizona
3. Mining District & County Black Hills, Yavapai Co
4. Former name Broom or Baker Property
5. Owner Roy Dale
6. Address (Owner) Cottonwood Arizona
7. Operator James
8. Address (Operator) Same
9. President, Owning Co. none
- 9A. President, Operating Co. none
10. Gen. Mgr. none
14. Principal Minerals Gold & Silver
11. Mine Supt. none
15. Production Rate Not running
12. Mill Supt. none
16. Mill: Type & Cap. Ball 7 ton
13. Men Employed none
17. Power: Amt. & Type auto. Mo 30 H.P.
18. Operations: Present Development

19. Operations: Planned mining. Milling ore Deposits delineated and continuing development

20. Number Claims, Title, etc. 12 Claims - grouped, not patented

21. Description: Topography & Geography
The Black Hills slope and trend east to the Verde river, just beyond 2 to 3 miles, and begins to dip ruggedly down into a series of stringer veins which strike north & south on the east side of the Black Hills low down and converge near the valley at a fault at Shaver Zone and also pitch north west. Walls fault Shaver Hanging wall contains granodiorite

22. Mine Workings: Amt. & Condition about 2000 feet tunnel drift and open cuts over of mill grade. Blasted out estimate about 2000 tons. Small surface on body of ground on the side stringer veins which converge on the fault at Shaver Zone

23. Geology & Mineralization

with series of ...
possibly ...
of the hills to the fault zone
Ore consists of Brecciated quartz with veins
and some of indistinct Hematite Pyrite
banded calcite and some galena and
silver oxide as development gains depth

24. Ore: Positive & Probable, Ore Dumps, Tailings

Ore Positive 2000 ton Probable 500000
50 ton tailing and Concentrate.

24A. Dimensions and Value of Ore body

on No 5 Mizpah Claim which has old
workings - about 1500 tons including some
pillars and old workings. on a sample
assay including 20 different samples at 20 ft
intervals depth and horizontal across the ore
lenses 5 in all lens 0.14 to 3.22

25. Mine, Mill Equipment & Flow-Sheet

at mill small fine & coarse ore bin
6x4 2 1/2 ft Chalmers Crusher set 4" to 3 1/4"
into Belt feeds table model feed Bot
Ball Mill - 7-ton 4 ft x 60 mesh to closed circuit
8x12 Simplex Minerals jig. over to amalgamator
dense clean up pan connected to amalgamator
uniform concentrate to Percolating Precipitation
interval Cyaniding Equipment

26. Road Conditions, Route

4 Miles East
Road from
Camp ...
that very good

27. Water Supply

no water at present. can be improved
gravity to mill - dump - By present owner

28. Brief History

has produced intermittently for 50 or
60 yrs located by owner 1934-35/36.

29. Special Problems, Reports Filed

None so far except Capital
to keep going.

30. Remarks

will be glad to cooperate with the
Mineral Resources Dept. I am just
Hard Working Prospector

31. If property for sale: Price, terms and address to negotiate.

always persons ...
factory

32. Signature

Roy J. Salas

Cottonwood Arizona

33. Use additional sheets if necessary.