



CONTACT INFORMATION

Mining Records Curator
Arizona Geological Survey
1520 West Adams St.
Phoenix, AZ 85007
602-771-1601
<http://www.azgs.az.gov>
inquiries@azgs.az.gov

The following file is part of the

Arizona Department of Mines and Mineral Resources Mining Collection

ACCESS STATEMENT

These digitized collections are accessible for purposes of education and research. We have indicated what we know about copyright and rights of privacy, publicity, or trademark. Due to the nature of archival collections, we are not always able to identify this information. We are eager to hear from any rights owners, so that we may obtain accurate information. Upon request, we will remove material from public view while we address a rights issue.

CONSTRAINTS STATEMENT

The Arizona Geological Survey does not claim to control all rights for all materials in its collection. These rights include, but are not limited to: copyright, privacy rights, and cultural protection rights. The User hereby assumes all responsibility for obtaining any rights to use the material in excess of "fair use."

The Survey makes no intellectual property claims to the products created by individual authors in the manuscript collections, except when the author deeded those rights to the Survey or when those authors were employed by the State of Arizona and created intellectual products as a function of their official duties. The Survey does maintain property rights to the physical and digital representations of the works.

QUALITY STATEMENT

The Arizona Geological Survey is not responsible for the accuracy of the records, information, or opinions that may be contained in the files. The Survey collects, catalogs, and archives data on mineral properties regardless of its views of the veracity or accuracy of those data.

PRINTED: 12-14-2006

ARIZONA DEPARTMENT OF MINES AND MINERAL RESOURCES AZMILS DATA

PRIMARY NAME: CROSBY GROUP

ALTERNATE NAMES:

YAVAPAI COUNTY MILS NUMBER: 705A

LOCATION: TOWNSHIP 13 N RANGE 1 E SECTION 9 QUARTER NW
LATITUDE: N 34DEG 31MIN 34SEC LONGITUDE: W 112DEG 16MIN 11SEC
TOPO MAP NAME: PRESCOTT VALLEY S - 7.5 MIN

CURRENT STATUS: EXP PROSPECT

COMMODITY:
COPPER
LEAD SULFIDE

BIBLIOGRAPHY:
USGS PRESCOTT VALLEY SO. QUAD
KRIEGER, M.H. GEOL. OF THE PRESCOTT AND
PAULDEN QUADS USGS PP 467 1965 P 104
ADMMR CROSBY GROUP FILE
CLAIMS EXTEND INTO SEC. 9

SHATTUCK DENN MINING CORPORATION

and

SUBSIDIARIES

..... Humboldt Office

Date..... September 23, 1966

TO: Mr. C. R. Sundeen

SUBJECT: CROSBY GROUP
 Robert Hill
 Humboldt, Arizona

FROM: J. N. Mayor

TYPE: Copper

TERMS: Not discussed

LOCATION:

The Crosby Group originally consisted of 7 unpatented claims, but since 1961 assessment work has been maintained on 5 claims. These are located in the Big Bug Mining District, T13N. R1E, parts of sections 4 & 9.

GEOLOGY:

The claim group is underlain for the most part by andesitic and basaltic flows and sedimentary tuffaceous rocks of the Green Gulch Formation. A band of intrusive gabbro or diorite cuts across the southerly claims.

Siliceous veins, lenses and pods occur in the area and these have been the focus of past prospecting ventures.

SAMPLING:

COPPER BELT:

Creamy-colored 'leached' siliceous rock, possibly rhyolitic, well fractured. Fractures often limonitic with local blue and green copper carbonate staining. Adjacent rocks weakly chloritic and schistose (N10°E, dip 80°W) with copper carbonates in a narrow zone.

<u>Sample No.</u>	<u>Description</u>	<u>Au</u>	<u>Ag</u>	<u>Cu</u>
13102	alt. rhy?, 6.0'	Tr	Tr	0.76
13103	chl. schist 5.0'	Tr	Tr	1.80
13101	hand sorted high grade Cu carbonate pile	Tr	Tr	8.78

TIGER:

Numerous old pits and trenches on a 5' siliceous zone, along strike from Copper Belt. The siliceous zone has the same general appearance with a weak reddish coloration and limonitic fractures. Copper carbonate staining may be present locally but appears more strongly in a narrow zone in the adjacent sericitic schist.

<u>Sample No.</u>	<u>Description</u>	<u>Au</u>	<u>Ag</u>	<u>Cu</u>
13105	#1 pit 5' sericitic schist	Tr	Nil	0.56
13106	2' sil. zone	Tr	Nil	0.46
13107	#2 pit dump grab	0.02	Tr	1.52
13108	#3 shaft dump grab	Tr	Nil	0.84

A second showing on the south-central part of the Tiger claim has been pitted and trenched for a length of 150' and to a maximum depth of 20'. This consists of a narrow 12"-18" white quartz vein striking S 30°E and dipping 75°NE, intruded into sericitic schists. Specks of sphalerite observed.

<u>Sample No.</u>	<u>Description</u>	<u>Au</u>	<u>Ag</u>	<u>Pb</u>	<u>Zn</u>	<u>Cu</u>
		0.22	Tr	0.10	4.1	0.16

COPPER CHIEF NO. 2:

Crosby shaft reported to a depth of 50'. No outcrop, dump investigation suggests a white quartz vein injected into m.gr. gabbroic or dioritic rock.

<u>Sample No.</u>	<u>Description</u>	<u>Au</u>	<u>Ag</u>	<u>Pb</u>	<u>Zn</u>	<u>Cu</u>
13109	qtz vein grab (dump)	Tr	Tr	0.10	Nil	0.14

COPPER CHIEF:

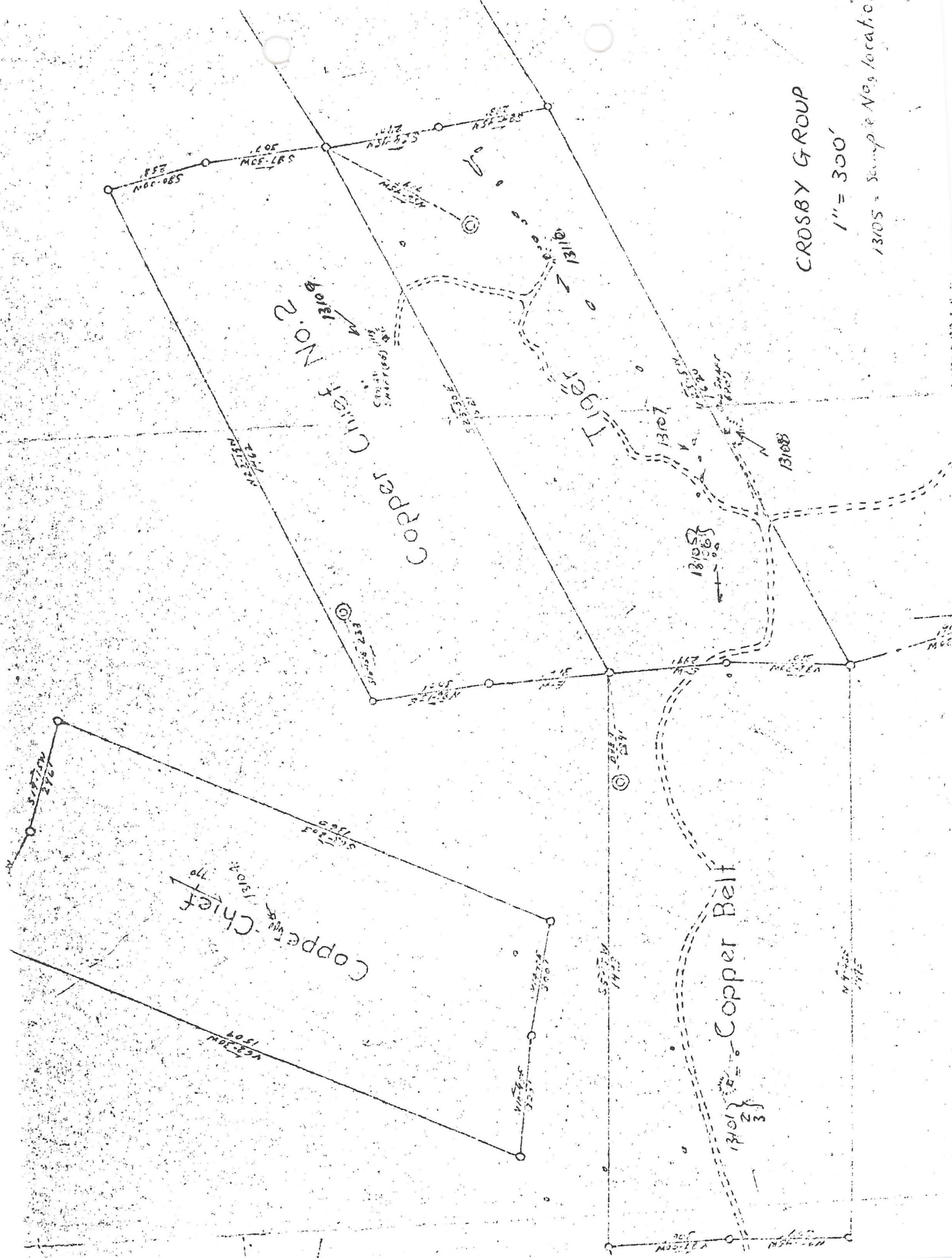
4' white quartz lens (approx. 40' in length) striking N120°E and dipping 77°S, intrusive into schistose rocks close to the contact with gabbro-diorite. Shreds of schist locally included in the quartz lens.

<u>Sample No.</u>	<u>Description</u>	<u>Au</u>	<u>Ag</u>	<u>Pb</u>	<u>Zn</u>	<u>Cu</u>
13104	4' wide qtz lens	Tr	Tr	0.10	Nil	0.16

CONCLUSIONS AND RECOMMENDATIONS:

The Crosby Group contains minor amounts of mineralization closely associated with narrow quartz veins or siliceous zones.

It is recommended that Shattuck Denn Mining Corporation take no further interest in the property at this time.



CROSBY GROUP

1" = 300'

13105 - Sample No. location

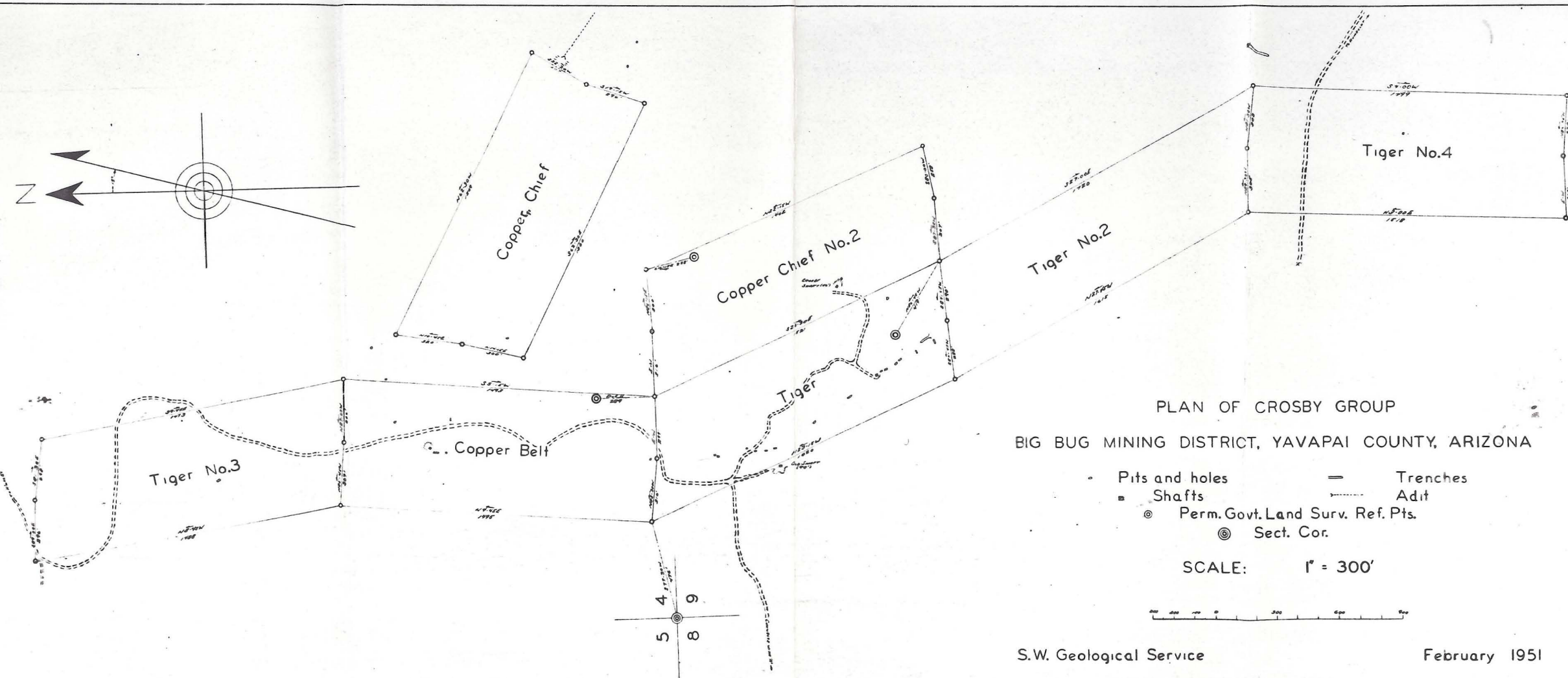
R. 1 E.



T. 13 N.

LOCATION OF CROSBY GROUP.

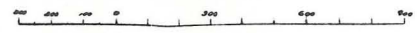
1 : 62500.



PLAN OF CROSBY GROUP
 BIG BUG MINING DISTRICT, YAVAPAI COUNTY, ARIZONA

- Pits and holes
- Shafts
- ⊙ Perm. Govt. Land Surv. Ref. Pts.
- ⊙ Sect. Cor.
- Trenches
- - - Adit

SCALE: 1" = 300'



S.W. Geological Service

February 1951