



CONTACT INFORMATION

Mining Records Curator
Arizona Geological Survey
1520 West Adams St.
Phoenix, AZ 85007
602-771-1601
<http://www.azgs.az.gov>
inquiries@azgs.az.gov

The following file is part of the

Arizona Department of Mines and Mineral Resources Mining Collection

ACCESS STATEMENT

These digitized collections are accessible for purposes of education and research. We have indicated what we know about copyright and rights of privacy, publicity, or trademark. Due to the nature of archival collections, we are not always able to identify this information. We are eager to hear from any rights owners, so that we may obtain accurate information. Upon request, we will remove material from public view while we address a rights issue.

CONSTRAINTS STATEMENT

The Arizona Geological Survey does not claim to control all rights for all materials in its collection. These rights include, but are not limited to: copyright, privacy rights, and cultural protection rights. The User hereby assumes all responsibility for obtaining any rights to use the material in excess of "fair use."

The Survey makes no intellectual property claims to the products created by individual authors in the manuscript collections, except when the author deeded those rights to the Survey or when those authors were employed by the State of Arizona and created intellectual products as a function of their official duties. The Survey does maintain property rights to the physical and digital representations of the works.

QUALITY STATEMENT

The Arizona Geological Survey is not responsible for the accuracy of the records, information, or opinions that may be contained in the files. The Survey collects, catalogs, and archives data on mineral properties regardless of its views of the veracity or accuracy of those data.

04/16/97

ARIZONA DEPARTMENT OF MINES AND MINERAL RESOURCES FILE DATA

PRIMARY NAME: COW BOY

ALTERNATE NAMES:

GILA COUNTY MILS NUMBER: 30A

LOCATION: TOWNSHIP 3 S RANGE 15 E SECTION 31 QUARTER NE
LATITUDE: N 33DEG 07MIN 52SEC LONGITUDE: W 110DEG 50MIN 46SEC
TOPO MAP NAME: EL CAPITAN MTN - 7.5 MIN

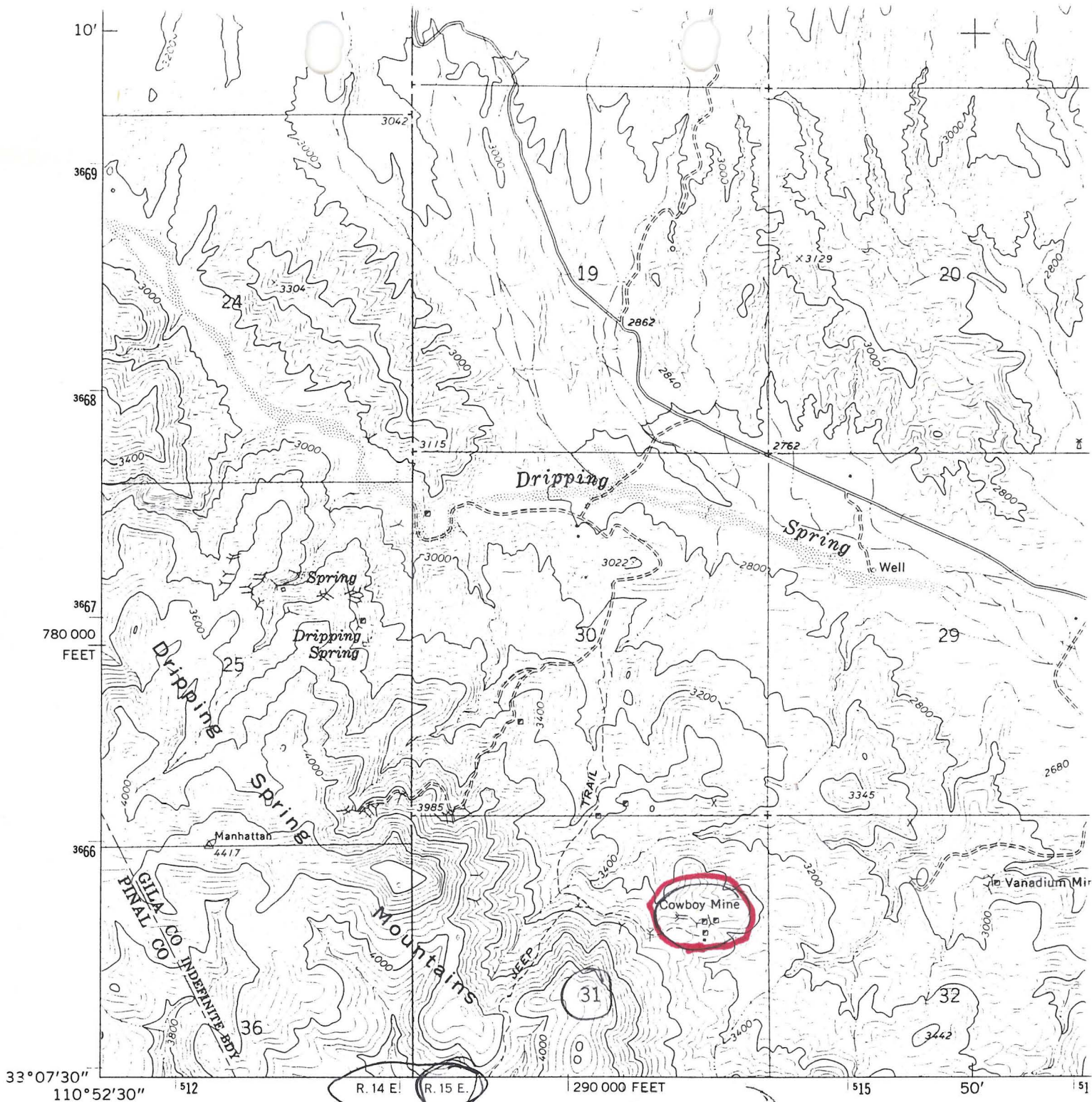
CURRENT STATUS: PAST PRODUCER

COMMODITY:

GOLD
LEAD
SILVER
ZINC
COPPER
VANADIUM
MICA

BIBLIOGRAPHY:

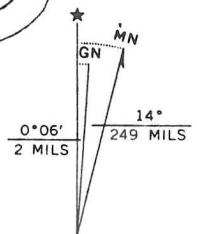
USGS EL CAPITAN MTN QUAD
ADMMR COW BOY MINES FILE
WEED W H MINES HANDBOOK VOL XIII 1918 P 520
A L FLAGG VANADIUM REPORTS BOOK 2 ADMMR FILES
USBM IC 8252 MERCURY POTENTIAL OF THE US 1965
P 70



(KEARNY)
3850 III SW

Mapped, edited, and published by the Geological Survey
 Control by USGS and USC&GS
 Topography by photogrammetric methods from aerial
 photographs taken 1962. Field checked 1964
 Polyconic projection. 1927 North American datum
 10,000-foot grid based on Arizona coordinate system, east zone
 1000-meter Universal Transverse Mercator grid ticks,
 zone 12, shown in blue
 Where omitted, land lines have not been established

T 3 S



UTM GRID AND 1964 MAGNETIC NORTH
 DECLINATION AT CENTER OF SHEET

DEPARTMENT OF MINERAL RESOURCES
STATE OF ARIZONA
OWNERS MINE REPORT

MC 13

References: IC 8252
A.L. Flagg Vanadium
reports - Book U-11

Mine Cow Boy Mines

District Dripping Springs Mining District

Former name

Owner

Gila County -
C. W. McGraw - (deceased)

Operator

President

Mine Supt.

Principal Metals Gold, silver, lead, zinc
and copper

Production Rate

Power: Amt. & Type

Operations: Present

Operations Planned

Number Claims, Title, etc. 6 unpatented claims - 115 acres

Description: Topog. & Geog.

Mine Workings: Amt. & Condition

*500 ft. of development work - 1 shaft
Compartment timbered shaft - 50 ft. deep with head frame -
1 - 250 ft. tunnel*

(over)

Geology & Mineralization *Thin quartzite cut by quartz-diorite, porphyry and diabase - A quartz vein occurs along a monzonite intrusion.*

Ore: Positive & Probable, Ore Dumps, Tailings

Mine, Mill Equipment & Flow Sheet

Road Conditions, Route

Water Supply

Brief History

Special Problems, Reports Filed

Remarks

If property for sale: Price, terms and address to negotiate.

Signed.....

Use additional sheets if necessary.

DEPARTMENT OF MINERAL RESOURCES
State of Arizona
MINE OWNER'S REPORT

Date: December 1, 1939.

1. Mine: COW BOY MINES
2. Location: 24 miles S. of Globe, Arizona
17 miles NW of Winkelman
10 miles W. of Christmas
3. Mining District & County: Dripping Springs Mining Dist.,
Gila County, Arizona.
4. Former Name:
5. Owner: C. W. McGraw
6. Address (Owner): 5522 Carlton Way,
Los Angeles, California
7. Operator:
8. Address (Operator):
9. President, Owning Co:
- 9A. President, Operating Co:
10. Gen. Mgr:
14. Principal Minerals: Gold, silver, lead
Zinc and copper.
11. Mine Supt:
15. Production Rate:
12. Mill Supt:
16. Mill - Type & Cap:
13. Men Employed:
17. Power - Amt. & Type:
18. Operations - Present: None.
19. Operations - Planned:
20. Number Claims, Title, etc: 6 unpatented claims - 115 acres.
21. Description - Topography & Geography: Foothills of mountain, elevation about
4,000 feet.
22. Mine Workings - Amt. & Condition: 500 feet of development work.
1 double compartment 50 ft. shaft -
timbered and head frame.
1 250 ft. tunnel.

23. Geology & Mineralization: Fissure vein in and near Ansonite intrusion in lime, quartzite and diabase country rocks. Free gold values predominate.
24. Ore - Positive & Probable, Ore Dumps, Tailings: A production of \$25,000 in gold from shallow workings - less than 50 feet in depth.
- 24A. Dimensions and Value of Ore body:
25. Mine, Mill Equipment & Flow-Sheet: A small mill, 50 ton crusher, ore grinder, 1 table, 2 gas engines, Blacksmith shop and small tools for hand work; 2 camp houses.
26. Road Conditions, Route: Good road from County Highway at Dripping Springs.
27. Water Supply: Sufficient for small mill and domestic use. Additional water can be developed.
28. Brief History: Has produced \$25,000 from shallow workings.
29. Special Problems, Reports Field:
30. Remarks:
31. If property for sale - Price, terms and address to negotiate: For Sale. See owner for terms.
32. Signature: C. W. McGRAW,
5522 Carlton Way,
Los Angeles, California

COW BOY MINES

GILA COUNTY

IC 8252 p. 70 — *reports the presence of cinnibar*

A. L. Flagg vanadium reports - Book V-II

.....

KAP WR 2/13/80: Discussed the Cowboy Mine, Gila County, with John Roberds, P.O. Box 513, Miami, Arizona 85539, phone 473-2267 (place on mailing list). He feels the mine may have some merit and is planning an evaluation.
.....

February 13, 1947

✓
Mr. A. D. Bishop
13817 Valerio St.
Van Nuys, California

Dear Mr. Bishop:

It is impossible for us to tell you anything about the claims you mention unless we have a quite definite idea of their location.

If you have copies of the location notices or the book and page or recording, we could possibly run them down, but it would have to be done in the district where they are located.

Assuring you that we would be glad to help you if possible.

Yours very truly,

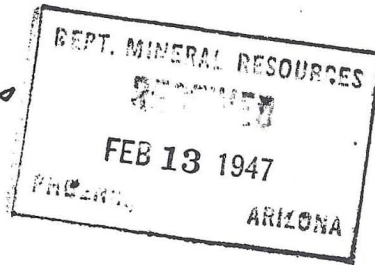
Chas. H. Dunning
Director

CHD:LP

Van Neys Paig
13817 Valerio St.

2-10-47

Dept. of Mineral Resources
Phoenix Ariz.
Gentlemen:-



As executor for the recently deceased Chas. W. McGraw, I need some help determining his claims in Arizona as follows. Low Bay Mines - Gladis - Triangle Mistle Toe - Beehive & Beehive extension. Can you advise me if Chas W McGraw and M.T. Hoover are equal owners of these claims? Also would you be in position to give me an estimate as to sale value and prospect of selling in the near future.

I trust I am not asking to much of you and assure you I shall appreciate your early reply. Thank you.

Yours Truly,
J. A. M. Bishop

May 25, 1942

Mr. C. W. McGraw
522 Carlton Way
Hollywood, California

Dear Mr. McGraw:

Your letter of May 20, addressed to Charles F. Willis, has been turned over to the department for our records.

I note your remarks about cinnabar on the ~~Cow~~
Boy mine, and will insert this note in a record of your
mine.

The mere statement of a fissure vein carrying cinnabar is rather meager, and when you have some of the ore assayed, and can state the width of the showing, and the assay, it will be of value to add to your mine owner's report on the property.

Yours very truly,

J. S. Coupal,
Director

JSC:GS

Pico Boz Min
Kulu Buhit
Cingora,

Sept

Charles F. Willis, Hollywood, Calif.
Chairman of Small 5522 Carlton Way,
Mining Association May 20th 42
Phoenix, Ariz.

Dear Sir,

Since submitting information relating to a group of thin glass known locally in drifting Springs as the Low-Poc Mines & Mining Dist and of which you have a description I have recently discovered Cinnabar, had my attention ^{drawn} to it for years. I think there 250 ft tops in height, because the ore is black and more or less massive I did not examine it for mercury, but made the discovery while panning for gold.

This can be attached to my earlier description, have to pissure vein, both show Cinnabar. Thanking you
Sincerely
C. W. M. Graw,

Carl G. Bartlett
Field Engineer
State Department of
Mineral Resources,
Phoenix, Arizona.

Los Angeles, Calif.
5527 Carlton Way,
Dec 1, 1939.

Dear Sir:

Observing in Los Angeles Times under ^{date}
Nov 27th last that a list of prospects and
small mines is being compiled by
you (I am enclosing a description of
a small mine which I desire to include
in your list, will furnish additional
information if desired).

Thanking you for adding this pros-
pect to your list. Sincerely,
C. M. McGraw

C. M. McGraw
5527 Carlton Way,
Los Angeles, Calif.

DESCRIPTION OF COW BOY MINES

The Cow Boy Mines are located in the East 1/2 of Section 31, in Township 3, South of Range 15 East in the Dripping Springs Mining District in Gila County, Arizona, about 24 miles south of Globe, 17 miles north and west of Winkelman, 10 miles west of Christmas, a station on Southern Pacific Railroad. It consists of six unpatented mining claims, an area of about 115 acres.

The country rock consists of lime quartzite cut by quartzdiorite, porphyry and diabase. Two well defined fissure veins extend nearly east and west the length of the property, or about 3000 feet, and numerous cross veins connecting the fissures.

The ores are gold, silver, lead, zinc and copper, gold predominating and high grade. A production of more than \$25,000.00 has been taken from shallow workings less than 50 feet from the surface.

About two car loads of lead has been shipped, which averaged about 30%. No other minerals have been produced in commercial quantities.

The gold occurs along a monzonite intrusion, and so far exploratory work has been done covering only about 1000 feet along the vein. The character of the ore may best be shown by some receipts from the United States Mint and Assay Certificates, some of which are as follows:

"Memorandum of Gold Bullion deposited at the Mint of the United States at San Francisco."

By		
C. W. McGraw		
Jan. 3rd, 1916,	Bar Weight 70.28 oz.	\$1179.76
By		
C. W. McGraw,		
Jan. 3rd, 1916	Bar Weight 56.84 oz.	938.29
By		
C. W. McGraw,		
Sept. 15, 1916	2 Bars Weight 48.45 oz.	785.94
By		
C. W. McGraw,		
June 22, 1917	Bar Weight 33.73 oz.	562.12
By		
C. W. McGraw,		
June 22, 1917	Bar Weight 4.53 oz.	72.30
By		
C. W. McGraw		
June 21, 1919	Bar Weight 70.72 oz.	1193.00

Many other sales of gold made are not herein reported, receipts having been lost.

ASSAY CERTIFICATES
DENVER SCHOOL OF MINES

Sample No. 1	Gold	\$6.20	Silver	.65	\$ 6.85
" " 2	"	2239.50		31.80	2271.40
" " 3		8.27		.11	8.38

Nov. 7, 1914 Assay Certificate by Baverstock, Staples & Payne,
Los Angeles, Cal.

Sample No. 1, Ground, Gold \$141.80 Silver \$1.20 \$ 143.00

Nov. 5, 1914, Assay Certificate by Baverstock, Staples & Payne,
Los Angeles, Cal.

Sample No. 1 Gold and Silver - - - - - \$ 102.55
Sample No. 2 " " 97.60
Sample No. 3 " " 99.65

Nov. 7, 1914

Sample No. 1 Gold and Silver \$ 562.25
Sample No. 2 " " 560.19

June 5, 1912 Baverstock & Payne, Select Sample

Sample No. 1 Gold \$74,587.36)
Silver 879.00) \$75,466.36

Dec. 29, 1915, Baverstock & Payne

Sample No. 1 Gold \$74.40 Silver \$1.50 \$ 75.90
Sample No. 2 Gold \$75.25 Silver 1.50 \$ 76.75

Oct. 29, 1913, Baverstock & Payne

Sample No. 1 Gold \$25.20 Silver - trace \$ 25.20
Sample No. 2 Gold 19.00 Silver - trace 19.00

June 14, 1915, Baverstock & Payne

Sample No. 1 Gold \$169.05 Silver \$1.40 \$ 170.45

Many Assay Certificates showing small values are not shown here. All gold ore deposits of commercial value have been found in one fissure vein in and near Monzonite in lime and diabase, and consists of iron Manganese and quartz. Gold is free milling, coarse and easily recovered.

Prospecting and panning ores found in other veins shows same character of ore and free gold.

About 500 feet of development work has been done, consisting of shafts, tunnels, drifts and open cuts. One shaft double compartment 50 feet deep, head frame and timbered; one tunnel 250 feet with track and car. A mill of small capacity has been built, a 50-ton breaker, a grinder, one concentrating table, 2 gas engines; Blacksmith shop, hammers and drills, picks, and shovels, wheel barrows, all necessary tools for hand work. Two good camp houses, cooking utensils, beds, etc., to accommodate small crew of men.

A passable road has been built from the mine to the public highway traversing Dripping Springs Valley, which gives good easy travel to all points in Central Arizona.

Any further information may be had by addressing

C. W. McGraw,
5522 Carleton Way,
Los Angeles, Calif.