



## **CONTACT INFORMATION**

Mining Records Curator  
Arizona Geological Survey  
1520 West Adams St.  
Phoenix, AZ 85007  
602-771-1601  
<http://www.azgs.az.gov>  
[inquiries@azgs.az.gov](mailto:inquiries@azgs.az.gov)

The following file is part of the

Arizona Department of Mines and Mineral Resources Mining Collection

## **ACCESS STATEMENT**

These digitized collections are accessible for purposes of education and research. We have indicated what we know about copyright and rights of privacy, publicity, or trademark. Due to the nature of archival collections, we are not always able to identify this information. We are eager to hear from any rights owners, so that we may obtain accurate information. Upon request, we will remove material from public view while we address a rights issue.

## **CONSTRAINTS STATEMENT**

The Arizona Geological Survey does not claim to control all rights for all materials in its collection. These rights include, but are not limited to: copyright, privacy rights, and cultural protection rights. The User hereby assumes all responsibility for obtaining any rights to use the material in excess of "fair use."

The Survey makes no intellectual property claims to the products created by individual authors in the manuscript collections, except when the author deeded those rights to the Survey or when those authors were employed by the State of Arizona and created intellectual products as a function of their official duties. The Survey does maintain property rights to the physical and digital representations of the works.

## **QUALITY STATEMENT**

The Arizona Geological Survey is not responsible for the accuracy of the records, information, or opinions that may be contained in the files. The Survey collects, catalogs, and archives data on mineral properties regardless of its views of the veracity or accuracy of those data.

PRINTED: 01/17/2003

ARIZONA DEPARTMENT OF MINES AND MINERAL RESOURCES AZMILS DATA

PRIMARY NAME: COUNTESS

ALTERNATE NAMES:

PINAL COUNTY MILS NUMBER: 750

LOCATION: TOWNSHIP 10 S RANGE 12 E SECTION 8 QUARTER SW  
LATITUDE: N 32DEG 34MIN 24SEC LONGITUDE: W 111DEG 07MIN 54SEC  
TOPO MAP NAME: TORTOLITA MTS - 15 MIN

CURRENT STATUS: UNKNOWN

COMMODITY:  
UNKNOWN COPPER ??

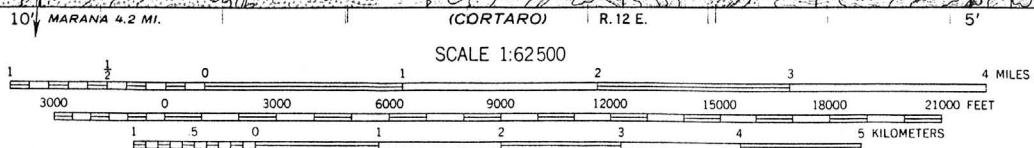
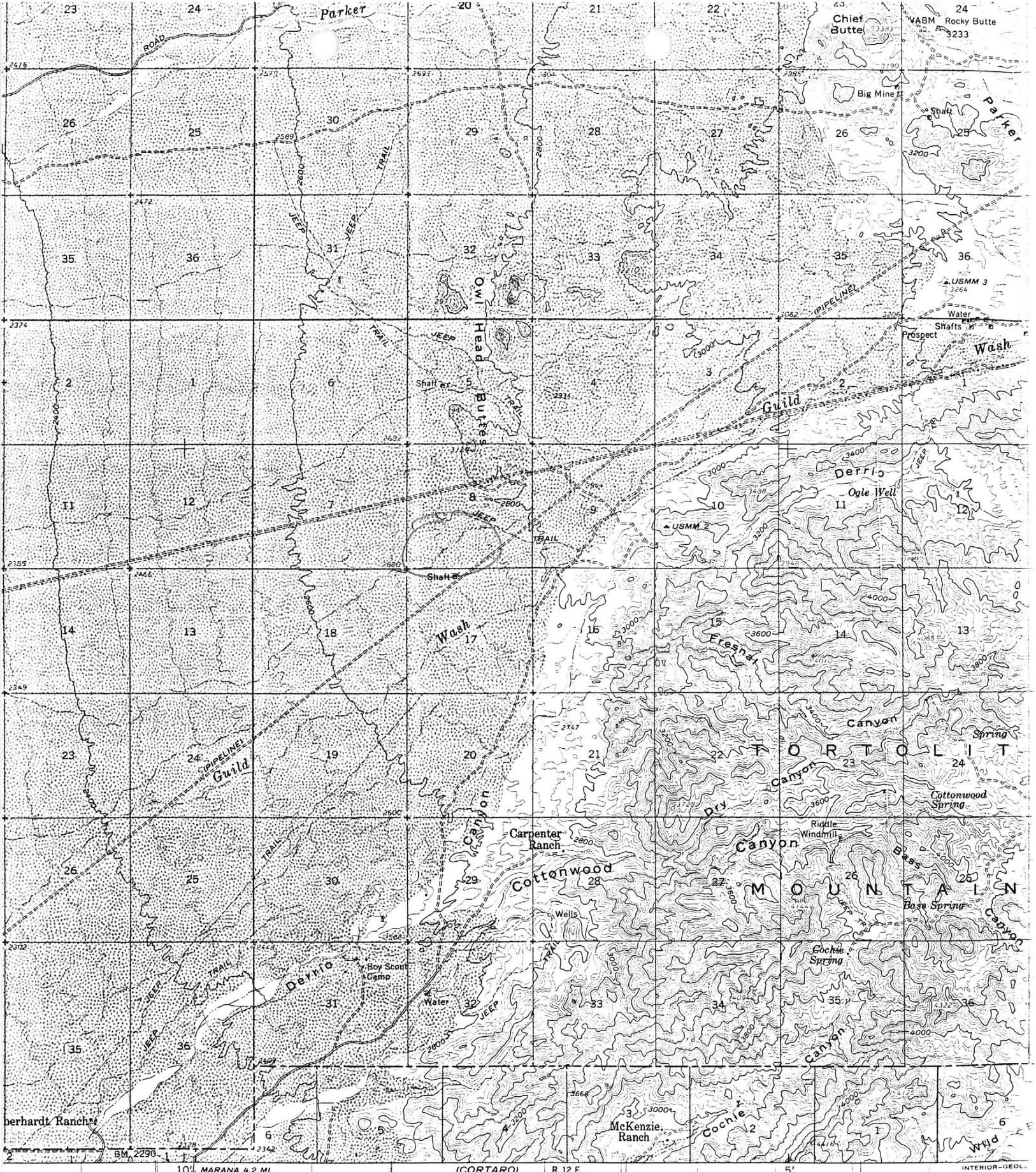
BIBLIOGRAPHY:  
ADMMR COUNTESS FILE

COUNTESS

PINAL COUNTY

MG WR 3/4/88: Mr. Gary Fite, P O Box 55670, Tucson, Arizona 85703; phone 791-2233, owns the Countess mine in the SW  $\frac{1}{4}$ , Sec 8, T10S R12E (Pinal County). This property was last worked in the 1940's. There are several shafts on the unpatented property. Mr. Bill Ewing (card) sold the property to Fite.

-----



CONTOUR INTERVAL 40 FEET  
DATUM IS MEAN SEA LEVEL

*Tortolita Mts*  
15

ARIZONA