



CONTACT INFORMATION

Mining Records Curator
Arizona Geological Survey
1520 West Adams St.
Phoenix, AZ 85007
602-771-1601
<http://www.azgs.az.gov>
inquiries@azgs.az.gov

The following file is part of the

Arizona Department of Mines and Mineral Resources Mining Collection

ACCESS STATEMENT

These digitized collections are accessible for purposes of education and research. We have indicated what we know about copyright and rights of privacy, publicity, or trademark. Due to the nature of archival collections, we are not always able to identify this information. We are eager to hear from any rights owners, so that we may obtain accurate information. Upon request, we will remove material from public view while we address a rights issue.

CONSTRAINTS STATEMENT

The Arizona Geological Survey does not claim to control all rights for all materials in its collection. These rights include, but are not limited to: copyright, privacy rights, and cultural protection rights. The User hereby assumes all responsibility for obtaining any rights to use the material in excess of "fair use."

The Survey makes no intellectual property claims to the products created by individual authors in the manuscript collections, except when the author deeded those rights to the Survey or when those authors were employed by the State of Arizona and created intellectual products as a function of their official duties. The Survey does maintain property rights to the physical and digital representations of the works.

QUALITY STATEMENT

The Arizona Geological Survey is not responsible for the accuracy of the records, information, or opinions that may be contained in the files. The Survey collects, catalogs, and archives data on mineral properties regardless of its views of the veracity or accuracy of those data.

PRINTED: 01/17/2003

ARIZONA DEPARTMENT OF MINES AND MINERAL RESOURCES AZMILS DATA

PRIMARY NAME: COSH SHAFT

ALTERNATE NAMES:

MARICOPA COUNTY MILS NUMBER: 265B

LOCATION: TOWNSHIP 6 N RANGE 6 W SECTION 20 QUARTER E2
LATITUDE: N 33DEG 51MIN 08SEC LONGITUDE: W 112DEG 54MIN 01SEC
TOPO MAP NAME: VULTURE MOUNTAINS - 15 MIN

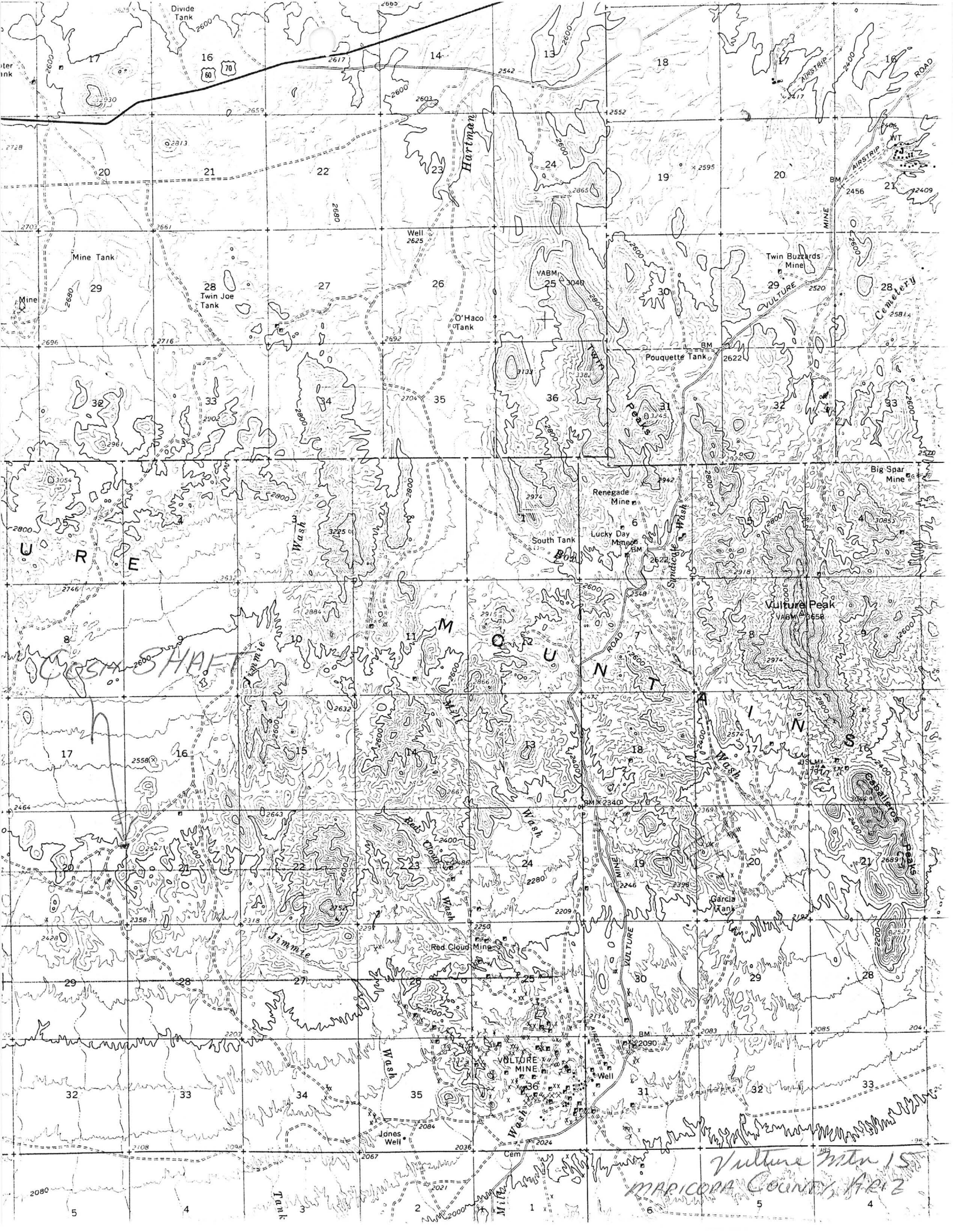
CURRENT STATUS: EXP PROSPECT

COMMODITY:

COPPER OXIDE
SILICON FLUX

BIBLIOGRAPHY:

ADMMR COSH SHAFT FILE



Vulture Mtn IS
MARICOPA COUNTY, ARIZ

COSH SHAFT

MARICOPA COUNTY

kap wr 5/22/88

Eric Cosh, P.O. Box 56233, Phoenix, Arizona 85079, phone 246-4887, was in for information on some old prospects in Maricopa County where he has been prospecting. He provided very brief information on two old workings which were listed as unknowns in AzMILS. His information which will serve to give the prospects names and to start a file on each.

Eric Cosh reported that the shaft shown on the Vulture 15' quadrangle in the eastern part of Sec. 20, T.6N., R.6W. and listed as Unknown Shaft and Five Prospects in AzMILS (Maricopa # 265B) is over 100 feet deep and exposes a quartz vein 4 feet wide in granite. He reported the only recognizable minerals were copper oxides. A file, Cosh Shaft, should be made.