



CONTACT INFORMATION

Mining Records Curator
Arizona Geological Survey
1520 West Adams St.
Phoenix, AZ 85007
602-771-1601
<http://www.azgs.az.gov>
inquiries@azgs.az.gov

The following file is part of the

Arizona Department of Mines and Mineral Resources Mining Collection

ACCESS STATEMENT

These digitized collections are accessible for purposes of education and research. We have indicated what we know about copyright and rights of privacy, publicity, or trademark. Due to the nature of archival collections, we are not always able to identify this information. We are eager to hear from any rights owners, so that we may obtain accurate information. Upon request, we will remove material from public view while we address a rights issue.

CONSTRAINTS STATEMENT

The Arizona Geological Survey does not claim to control all rights for all materials in its collection. These rights include, but are not limited to: copyright, privacy rights, and cultural protection rights. The User hereby assumes all responsibility for obtaining any rights to use the material in excess of "fair use."

The Survey makes no intellectual property claims to the products created by individual authors in the manuscript collections, except when the author deeded those rights to the Survey or when those authors were employed by the State of Arizona and created intellectual products as a function of their official duties. The Survey does maintain property rights to the physical and digital representations of the works.

QUALITY STATEMENT

The Arizona Geological Survey is not responsible for the accuracy of the records, information, or opinions that may be contained in the files. The Survey collects, catalogs, and archives data on mineral properties regardless of its views of the veracity or accuracy of those data.

PRINTED: 02/11/2003

ARIZONA DEPARTMENT OF MINES AND MINERAL RESOURCES AZMILS DATA

PRIMARY NAME: CORONADO 1 & 11

ALTERNATE NAMES:

MARICOPA COUNTY MILS NUMBER: 691

LOCATION: TOWNSHIP 1 S RANGE 3 E SECTION 11 QUARTER E2
LATITUDE: N 33DEG 21MIN 21SEC LONGITUDE: W 112DEG 00MIN 50SEC
TOPO MAP NAME: LONE BUTTE - 7.5 MIN

CURRENT STATUS: UNKNOWN

COMMODITY:
COPPER
GOLD
SILVER

BIBLIOGRAPHY:
ADMMR CORONADO 1 AND 11 FILE
ALSO IN SEC 12

02/17/87

ARIZONA DEPARTMENT OF MINES AND MINERAL RESOURCES FILE DATA

PRIMARY NAME: CORONADO 1 & 11

ALTERNATE NAMES:

MARICOPA COUNTY MILS NUMBER: 691

LOCATION: TOWNSHIP 1 S RANGE 3 E SECTION 11 QUARTER --
LATITUDE: N DEG MIN SEC LONGITUDE: W DEG MIN SEC
TOPO MAP NAME: LONE BUTTE - 7.5 MIN

CURRENT STATUS: UNKNOWN

COMMODITY:

COPPER
GOLD
SILVER

BIBLIOGRAPHY:

ADMMR CORONADO 1 AND 11
ALSO IN SEC 12

Maricopa County, ARIZ

7.5 MINUTE U.S. GEOLOGICAL SURVEY
SECTION 4, 1911 X 15 QUADRANGLE

Coronado I Mine
Sample Location Map

TIN
R3E
South Mts, Ariz

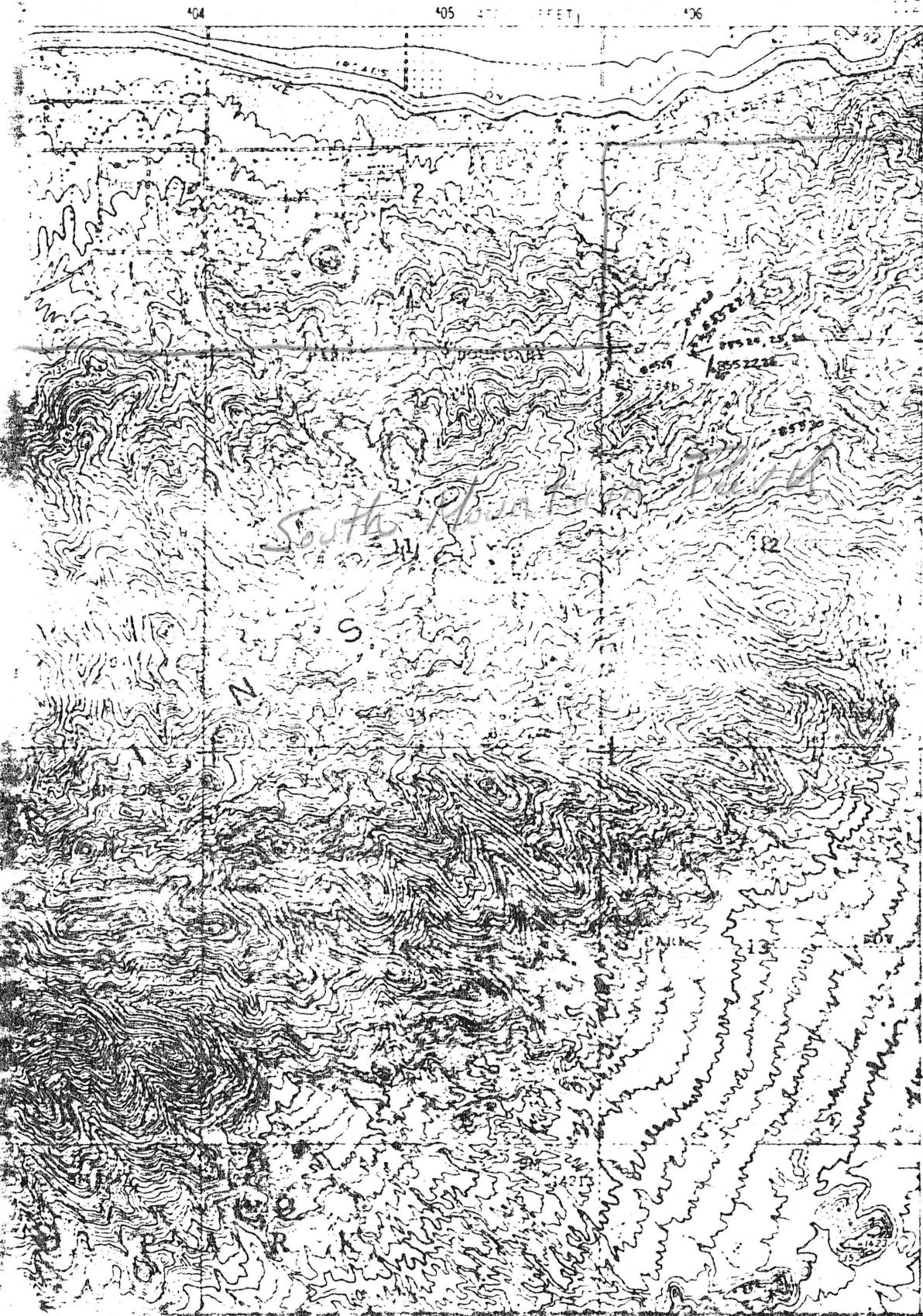
N

692
6000
FEET

691

690

3688

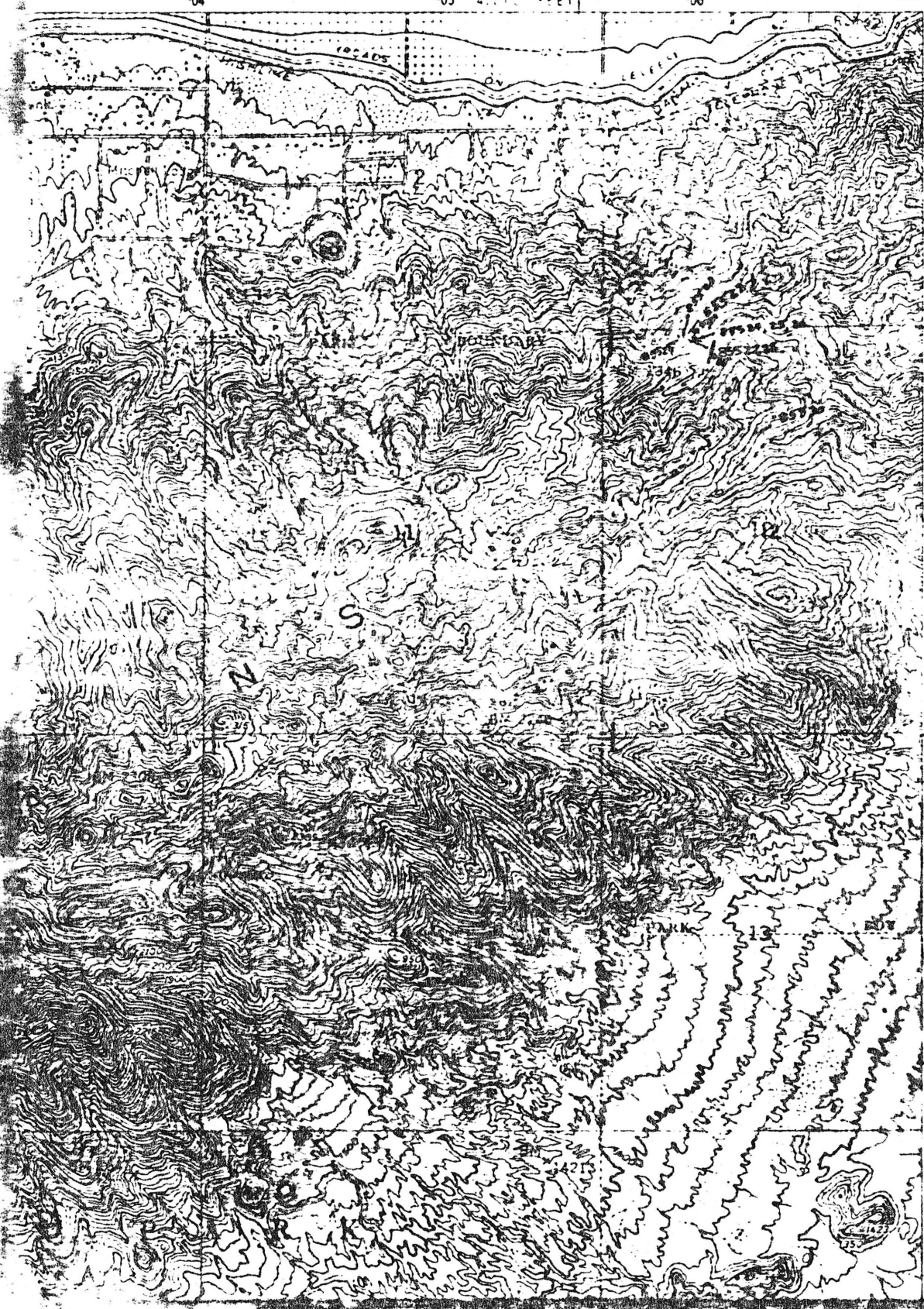


1" = 2000'
ADB
MAY 17, 1983

Maricopa County, Ariz

75 MINUTE SERIES (TOPOGRAPHIC) Coronado I Mine
SE 4 FCEN X 15 QUADRANGLE
Sample Location Map

404 405 47000 FEET 406



1:2000
R3E
South Mtns, Ariz

N
992
20000
FEET

991

1" = 2000'
ADB
MAY 17, 1983

988

Coronado

FILE NO 3000

South Mountains, Ariz.

May 17, 1983

SAMPLE LOG

PAGE 1

SAMPLE	DATE	BY:	INT.	I. ppm								LOCATION AND REMARKS
				Cu	Au	Ag	Mo					
85522	5/17/83	ADB		600	.04	<.2					Prospect pits just N. of gully: Rock chip across fault.	
85523	5/17/83	"		90	<.02	<.2					Prospect pit just N. of gully: Lt grey siliceous rock	
85524	5/17	"		>3000	>10	1.4					Coronado mine dump: High grade rock grab.	
85525	5/17	"		410	.37	<.2					Coronado mine dump: Limonitic granite grab	
85526	5/17	"		610	.21	<.2					Coronado shaft - 18" rock chip across vein ^{includes clay} zone	
85527	5/17	"		25	<.02	<.2					upper prospect pit: Rx chip country rock ^{siliceous} grab	
85528	5/17	"		350	<.02	<.2					Top of hill Intensely siliceous lt grey or cherty	
85529	5/17	"		55	<.02	<.2					same as above w. flint Silicified light grey rock	
85530	5/17	"		750	<.02	<.2					sample from "lead silver" mine/prospect pit.	