



## CONTACT INFORMATION

Mining Records Curator  
Arizona Geological Survey  
1520 West Adams St.  
Phoenix, AZ 85007  
602-771-1601  
<http://www.azgs.az.gov>  
[inquiries@azgs.az.gov](mailto:inquiries@azgs.az.gov)

The following file is part of the

Arizona Department of Mines and Mineral Resources Mining Collection

## ACCESS STATEMENT

These digitized collections are accessible for purposes of education and research. We have indicated what we know about copyright and rights of privacy, publicity, or trademark. Due to the nature of archival collections, we are not always able to identify this information. We are eager to hear from any rights owners, so that we may obtain accurate information. Upon request, we will remove material from public view while we address a rights issue.

## CONSTRAINTS STATEMENT

The Arizona Geological Survey does not claim to control all rights for all materials in its collection. These rights include, but are not limited to: copyright, privacy rights, and cultural protection rights. The User hereby assumes all responsibility for obtaining any rights to use the material in excess of "fair use."

The Survey makes no intellectual property claims to the products created by individual authors in the manuscript collections, except when the author deeded those rights to the Survey or when those authors were employed by the State of Arizona and created intellectual products as a function of their official duties. The Survey does maintain property rights to the physical and digital representations of the works.

## QUALITY STATEMENT

The Arizona Geological Survey is not responsible for the accuracy of the records, information, or opinions that may be contained in the files. The Survey collects, catalogs, and archives data on mineral properties regardless of its views of the veracity or accuracy of those data.

PRINTED: 02/11/2003

ARIZONA DEPARTMENT OF MINES AND MINERAL RESOURCES AZMILS DATA

PRIMARY NAME: COPPER MOUNTAIN SCHIST QUARRY

ALTERNATE NAMES:

MAYER SCHIST QUARRY

YAVAPAI COUNTY MILS NUMBER: 1016

LOCATION: TOWNSHIP 12 N RANGE 2 E SECTION 18 QUARTER SE  
LATITUDE: N 34DEG 24MIN 57SEC LONGITUDE: W 112DEG 11MIN 16SEC  
TOPO MAP NAME: MAYER - 7.5 MIN

CURRENT STATUS: PAST PRODUCER

COMMODITY:

STONE DIMENSION

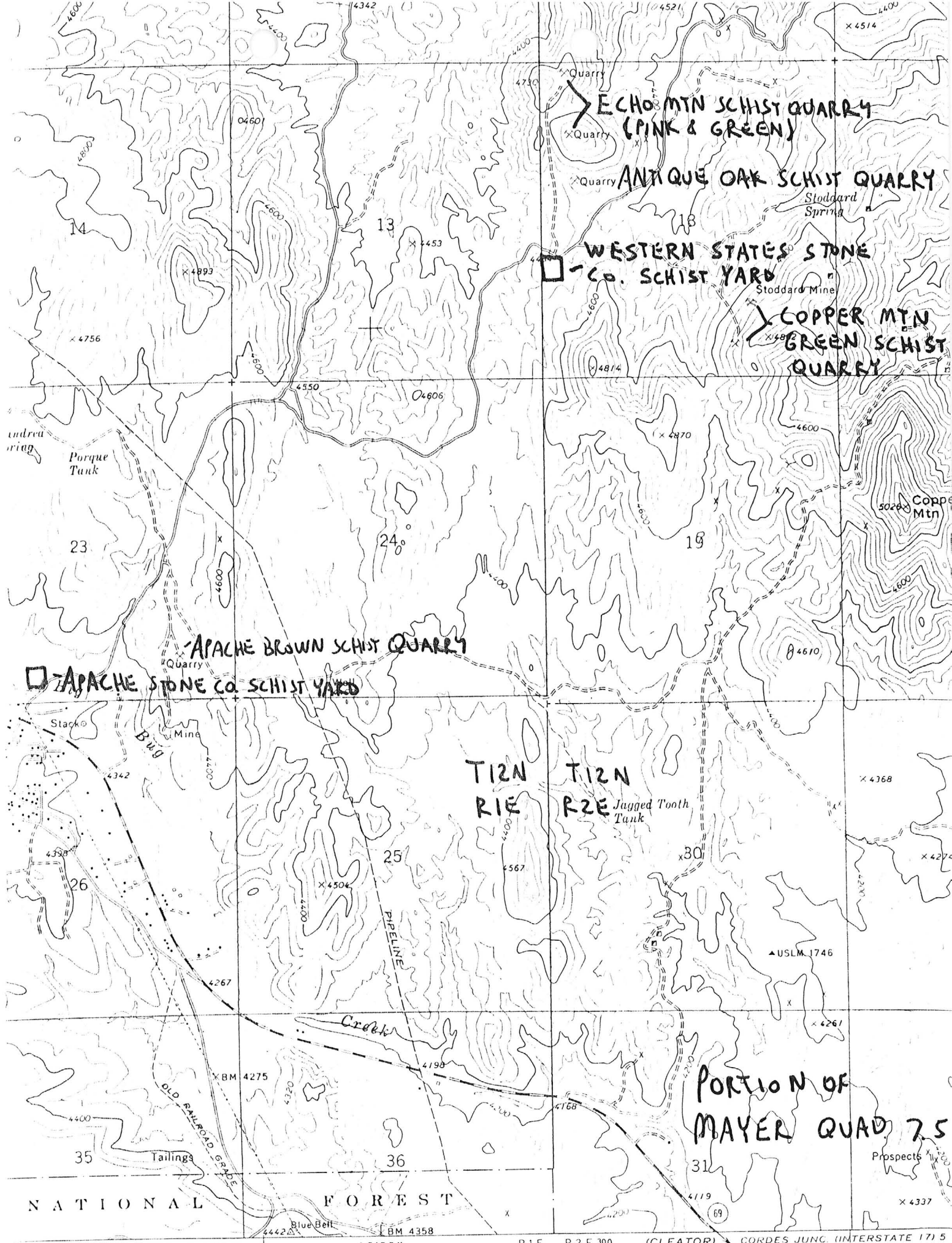
STONE SCHIST DM

BIBLIOGRAPHY:

USGS MAYER QUAD

ADMMR COPPER MOUNTAIN SCHIST QUARRY FILE

OPERATED BY WESTERN STATES STONE CO



ECHO MTN SCHIST QUARRY  
(PINK & GREEN)

ANTIQUE OAK SCHIST QUARRY

WESTERN STATES STONE  
Co. SCHIST YARD

COPPER MTN  
GREEN SCHIST  
QUARRY

APACHE BROWN SCHIST QUARRY

APACHE STONE Co. SCHIST YARD

T12N  
R1E

T12N  
R2E

PORTION OF  
MAYER QUAD 75

NATIONAL FOREST

387 388 12'30" R1E R2E 390 (CLEATOR) 3552 1 SW CORDES JUNC. (INTERSTATE 17) 5 PHOENIX 69 MI.

SCALE 1:24 000

Arizona Department of Mines and Mineral Resources

VERBAL INFORMATION SUMMARY 542

May be Reproduced

1. Information from: C.E. "Whitey" Webster, President, Western States Stone  
Address: 2820 Grand Avenue, Phoenix, Arizona 85017 Phone - 253-2018
2. Mine: Copper Mtn Schist Quarry 3. ADMMR Mine File (new) Copper Mtn Schist Quarry *Mountain*
4. County: Yavapai 5. District \_\_\_\_\_
6. Township 12N Range 2E Sec(s) 18 SW
7. Location: 2½ miles north of Mayer
8. No. of Claims - Patented \_\_\_\_\_ Unpatented X
9. Owner (if different from above) \_\_\_\_\_
10. Address: \_\_\_\_\_
11. Operating Company: Western States Stone
12. Pertinent People and/or Firm: C.E. "Whitey" Webster
13. Commodities: Stone - dimension - mica schist
14. Operational Status: producer
15. Summary of information received, comments, etc.: \_\_\_\_\_
16. Yavapai County MILS #1016 (Formerly Mayer Schist Quarries - file)

Western States Stone Company markets a variety of schist known as copper man green from this quarry. The schist is green from chromite as well as having malachite stains. The material is sized and put in wire baskets on pallets or stacked and strapped on skids for shipment at the company's schist stone yard located in the SW¼ of Sec 18, T12N R2E.

Date: 9/5/85

*D. N. ...*  
(Signature)

ADMMR

MINE VISIT

MINE: Mayer Onyx Property (f) and Mayer Schist Quarries (f)

DATE: July 14, 1984

ENGINEER: Nyal J. Niemuth, Mineral Resource Specialist

Apache Stone, 4637 E. Washington, Phoenix, AZ 85034, ph 267-8658, a division of Halquist Stone Co. Inc. operates an equipment and stone storage yard in T12N, R1E Sec 23 C. Though an active summer operation, this being saturday, their operations were idle.

At the yard is an inventory of approximately 600 skids or palets loaded with Schist (500) and Onyx (100) building and decorative stones. Typical stone dimensions would be 15" x 30" and 4-7" thick. Equipment on site at the yard and quarries included: an air track drill, compressor, 2 catapillar type vehicles, a loader, 2 fork lift trucks, some semi-truck flat bed trailers, and 2 trailers (possibly used as office and change room).

The onyx is being processed from a quarry located at T12N, R1E Sec 22 (Mayer Onyx Property file) as shown on the attached map.