



CONTACT INFORMATION

Mining Records Curator
Arizona Geological Survey
1520 West Adams St.
Phoenix, AZ 85007
602-771-1601
<http://www.azgs.az.gov>
inquiries@azgs.az.gov

The following file is part of the

Arizona Department of Mines and Mineral Resources Mining Collection

ACCESS STATEMENT

These digitized collections are accessible for purposes of education and research. We have indicated what we know about copyright and rights of privacy, publicity, or trademark. Due to the nature of archival collections, we are not always able to identify this information. We are eager to hear from any rights owners, so that we may obtain accurate information. Upon request, we will remove material from public view while we address a rights issue.

CONSTRAINTS STATEMENT

The Arizona Geological Survey does not claim to control all rights for all materials in its collection. These rights include, but are not limited to: copyright, privacy rights, and cultural protection rights. The User hereby assumes all responsibility for obtaining any rights to use the material in excess of "fair use."

The Survey makes no intellectual property claims to the products created by individual authors in the manuscript collections, except when the author deeded those rights to the Survey or when those authors were employed by the State of Arizona and created intellectual products as a function of their official duties. The Survey does maintain property rights to the physical and digital representations of the works.

QUALITY STATEMENT

The Arizona Geological Survey is not responsible for the accuracy of the records, information, or opinions that may be contained in the files. The Survey collects, catalogs, and archives data on mineral properties regardless of its views of the veracity or accuracy of those data.

PRINTED: 01/17/2003

ARIZONA DEPARTMENT OF MINES AND MINERAL RESOURCES AZMILS DATA

PRIMARY NAME: COPPER HILL

ALTERNATE NAMES:

PIMA COUNTY MILS NUMBER: 504

LOCATION: TOWNSHIP 12 S RANGE 18 E SECTION 32 QUARTER SW
LATITUDE: N 32DEG 20MIN 33SEC LONGITUDE: W 110DEG 31MIN 57SEC
TOPO MAP NAME: PIETY HILL - 7.5 MIN

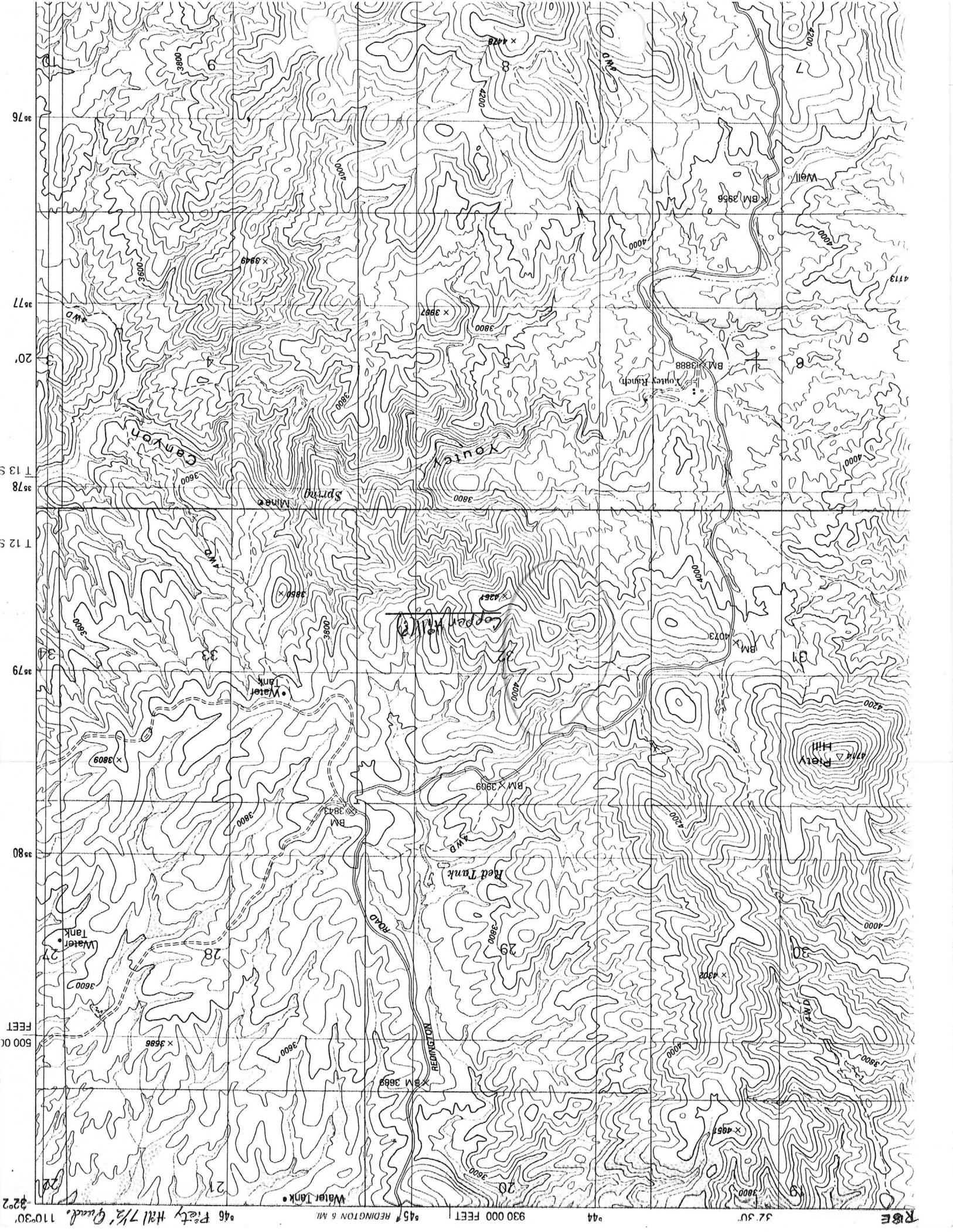
CURRENT STATUS: PAST PRODUCER

COMMODITY:

SILVER
COPPER

BIBLIOGRAPHY:

ADMMR COPPER HILL FILE
AZBM FILE DATA
ADMMR :U: FILE 56



RSE 37.30 44 930 000 FEET 45 46 Pietz Hill 7 1/2 Quad. 110°30'

500 00 FEET

112°

110°30'

76

77

78

79

80

81

82

20

21

22

23

24

25

26

27

28

29

30

31

32

33

34

35

36

37

38

39

40

41

42

43

44

45

46

47

48

49

50

51

52

53

54

55

56

57

58

59

60

Pima Co
General

CONTINENTAL MATERIALS CORPORATION
Interoffice Correspondence

To: C. H. Reynolds & Bill Cox

Date: May 31, 1965

From: G. L. Brooke

Copies:

Subject: Copper Prospect, Santa Catalina Mountains, Pima Co., Arizona

A brief visit was made to a copper prospect in the Santa Catalina Mountains. It is located approximately 30 miles east of Tucson; just east of the divide and south of the Tucson-Redington road.

Some high assays (40% Cu & 20 oz. Ag) have been obtained from hand picked specimens taken from a small pit. These specimens contain patches of pure chalcocite, and probably some argentite.

The country rock is pre-cambrian granite and granite gneiss, with numerous pegmatite dikes. The mineralization appears to be associated with the pegmatites.

Recommendation: This prospect is of no further interest.

Ed Truman (home in Tucson: 298-0774)
Mission Hardware & Nursery
— So. 12th Ave.
Tucson, Arizona