



CONTACT INFORMATION

Mining Records Curator
Arizona Geological Survey
1520 West Adams St.
Phoenix, AZ 85007
602-771-1601
<http://www.azgs.az.gov>
inquiries@azgs.az.gov

The following file is part of the

Arizona Department of Mines and Mineral Resources Mining Collection

ACCESS STATEMENT

These digitized collections are accessible for purposes of education and research. We have indicated what we know about copyright and rights of privacy, publicity, or trademark. Due to the nature of archival collections, we are not always able to identify this information. We are eager to hear from any rights owners, so that we may obtain accurate information. Upon request, we will remove material from public view while we address a rights issue.

CONSTRAINTS STATEMENT

The Arizona Geological Survey does not claim to control all rights for all materials in its collection. These rights include, but are not limited to: copyright, privacy rights, and cultural protection rights. The User hereby assumes all responsibility for obtaining any rights to use the material in excess of "fair use."

The Survey makes no intellectual property claims to the products created by individual authors in the manuscript collections, except when the author deeded those rights to the Survey or when those authors were employed by the State of Arizona and created intellectual products as a function of their official duties. The Survey does maintain property rights to the physical and digital representations of the works.

QUALITY STATEMENT

The Arizona Geological Survey is not responsible for the accuracy of the records, information, or opinions that may be contained in the files. The Survey collects, catalogs, and archives data on mineral properties regardless of its views of the veracity or accuracy of those data.

PRINTED: 08-23-2012

ARIZONA DEPARTMENT OF MINES AND MINERAL RESOURCES AZMILS DATA

PRIMARY NAME: COPPER BASIN WASH

ALTERNATE NAMES:
MEXICAN GULCH

YAVAPAI COUNTY MILS NUMBER: 256

LOCATION: TOWNSHIP 13 N RANGE 3 W SECTION 32 QUARTER SW
LATITUDE: N 34DEG 27MIN 23SEC LONGITUDE: W 112DEG 35MIN 54SEC
TOPO MAP NAME: WILHOIT - 7.5 MIN

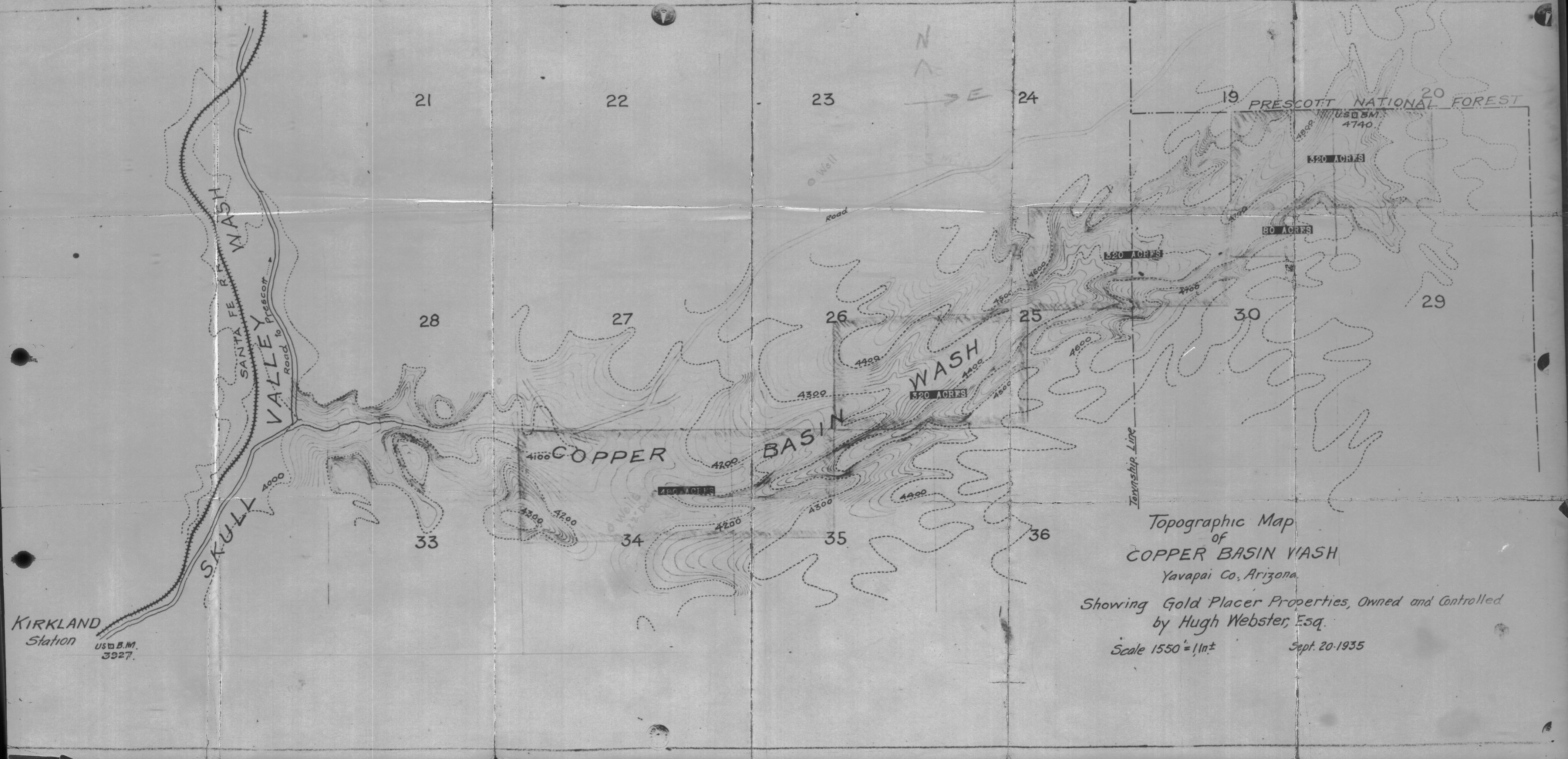
CURRENT STATUS: DEVEL DEPOSIT

COMMODITY:
GOLD PLACER

BIBLIOGRAPHY:
USGS WILHOIT QUAD
WILSON, E.D. GOLD PLACERS & PLACERING IN AZ
AZBM BULL 168 REVISED 1978 P 46-48
PLACERS WERE LOCATED ALL ALONG COPPER BASIN
WASH IN THE EARLY 30'S
ABM BULL, 160, P. 46-48
ADMMR COPPER BASIN WASH FILE

HUGH WEBSTER ESQ. PROPERTIES

YAVAPAI COUNTY
COPPER BASIN DIST
T12.5N R3W Sec 19,30
T13N R4W Sec. 25,26



KIRKLAND
Station
US B.M.
3927.

Topographic Map
of
COPPER BASIN WASH
Yavapai Co., Arizona.
Showing Gold Placer Properties, Owned and Controlled
by Hugh Webster, Esq.
Scale 1550' = 1" ± Sept. 20, 1935